

# Polar Plungers

by Beth Reed Designs



Quilt Size: 53 1/2" x 69 1/2" (1.36m x 1.77m)

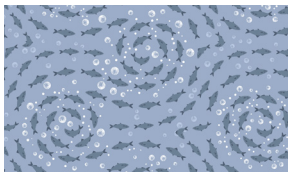
Skill Level: Beginner

## Pebbles Quilt

Designed and sold by Kari Nichols Quilting Renditions  
[www.quiltingrenditions.com](http://www.quiltingrenditions.com)

## Pebbles Quilt Ordering Guide

SKU	Yards	Meters	6 Kits	12 Kits
7889-17	1 1/4 yds	1.14m	1 bolt	2 bolts
7891-01	1/3 yds	0.30m	1 bolt	1 bolt
7892-77	1/4 yds	0.23m	1 bolt	1 bolt
7894-77	1 1/4 yds	1.14m	1 bolt	2 bolts
7896-17	2/3 yds	0.61m	1 bolt	1 bolt
1351-Seaglass	3/8 yds	0.34m	1 bolt	1 bolt
Storm Cloud-87* (10-yard bolts)	2 yds	1.83m	2 bolts	3 bolts
<b>Backing Fabric Option</b>				
7887-77	3 1/2 yds	3.20m	2 bolts	3 bolts
<p>* Indicates binding fabric.            FQ = 18" x 22" (0.45m x 0.55m)            All fabric quantities are based on 15yd bolts unless otherwise indicated.</p>				



7889-17  
Herring  
Blue



7891-01  
Polar Bears  
White



7892-77  
Seals  
Denim



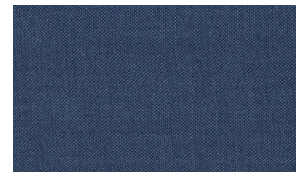
7894-77  
Whales and Waves  
Navy



7896-17  
Polar Plungers Block Print  
Blue



1351-Seaglass  
Just Color!



Storm Cloud-87  
Peppered Cottons