

# Polar Plunger

by Beth Reed Designs



Quilt Size: 72 1/2" x 88 1/2" (1.84m x 2.25m)

Skill Level: Advanced Beginner

## Picture That Quilt

Designed and sold by Kari Nichols Quilting Renditions  
[www. quiltingrenditions.com](http://www.quiltingrenditions.com)

## Picture That Quilt Ordering Guide

SKU		Yards	Meters	6 Kits	12 Kits
	7884-77	1/2 yds	0.46m	1 bolt	1 bolt
	7888-17	FQ	0.23m	1 bolt	1 bolt
	7892-77	FQ	0.23m	1 bolt	1 bolt
	7893-17	1/3 yds	0.30m	1 bolt	1 bolt
	7894-77	1 1/4 yds	1.14m	1 bolt	2 bolts
	7897P-17	2/3 yds	0.61m	1 bolt	1 bolt
	Blue Jay-41 (10-yard bolts)	2 1/4 yds	2.06m	2 bolts	3 bolts
	Ink-45* (10-yard bolts)	7/8 yds	0.80m	1 bolt	2 bolts
Backing Fabric Option					
	7885-77	5 1/3 yds	4.87m	3 bolts	5 bolts
* Indicates binding fabric. FQ = 18" x 22" (0.45m x 0.55m) All fabric quantities are based on 15yd bolts unless otherwise indicated.					



7884-77  
Humpbacks and Belugas  
Navy



7888-17  
Whale of a Tail  
Blue



7892-77  
Seals  
Denim



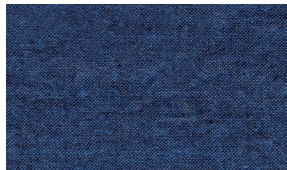
7893-17  
Orcas  
Blue



7894-77  
Whales and Waves  
Navy



Blue Jay-41  
Peppered Cottons



Ink-45  
Peppered Cottons



7897P-17  
Panel  
Blue