

Magic Under the Stars Quilt



Featuring fabrics from the **Woodland Magic** collection by Ashley Satanosky for 

Fabric Requirements

(A) 8005-77	2 panels
(B) 8003-66	¼ yard
(C) 7994-60	½ yard
(D) 7995-33	½ yard
(E) 7999-55	⅝ yard
(F) 1351-Slate ⁺⁺	⅝ yard*
(G) 8000-66	⅞ yds.
(H) 1351-Pigment White ⁺	1⅝ yds.
Backing 7998-79	3½ yds.

●●●●●●●●●●
 ● Free Project ●
 ● NOT FOR RESALE ●
 ●●●●●●●●●●

⁺⁺Includes binding.
^{*}Just Color! Collection.

Please check our website for pattern updates before starting this project.

Additional Supplies Needed

Batting: 59" x 59"
 (Recommended: Air Lite[®] Colour Me 100% Cotton)
 Sewing and Quilting supplies

Quilt size: 51" x 51"
 Skill Level: Beginner
 Quilt designed by Denise Russell.

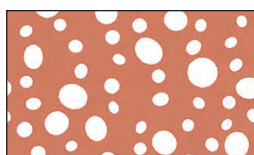
Woodland Magic - Fabrics in the Collection



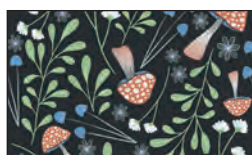
8005-77 Woodland Magic
Block Print - Periwinkle



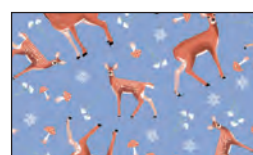
7994-60 Foxes
Lt. Green



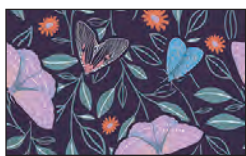
7995-33 Spots
Rust



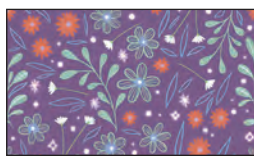
7996-79 Mushroom
Field - Dk. Navy



7997-77 Deer
Periwinkle



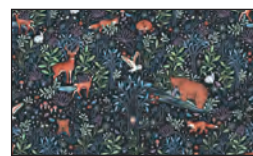
7998-79 Midnight
Moths - Dk. Navy



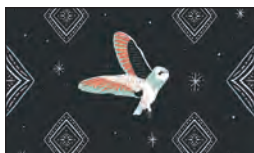
7999-55 Mystic Flowers
Purple



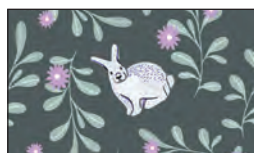
8000-66 Vine
Green



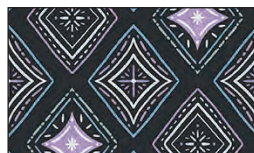
8001-79 Woodland
Magic Scenic - Dk. Navy



8002-79 Night Owls
Dk. Navy



8003-66 Bunnies
Green

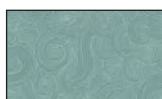


8004-79 Night Magic
Dk. Navy

Selected fabrics from the
Just Color! collection



Pigment
White



Slate

Cutting and Sewing

Cutting Instructions

Please note: All strips are cut across the width of the fabric (WOF) from selvage to selvage unless otherwise noted. (WOF = Width of Fabric, LOF = Length of Fabric).

Fabric A (8005-77 Block Panel - Periwinkle):

*Trim panel blocks into (9) 8" squares.

Fabric B (8003-66 Bunnies - Green), cut:

* (2) 1 $\frac{3}{4}$ " x WOF strips.

Fabric C (7994-60 Foxes - Lt. Green), cut:

* (1) 8" x WOF strip. Sub-cut (4) 8" squares.

Fabric D (7995-33 Spots - Rust), cut:

* (2) 1 $\frac{3}{4}$ " x WOF strips.

* (1) 3" x WOF strip. Sub-cut (12) 3" squares.

Fabric E (7999-55 Mystic Flowers - Purple), cut:

* (5) 4" x WOF strips for border 2.

Fabric F (1351 Just Color! - Slate), cut:

* (1) 1 $\frac{1}{2}$ " x WOF strip. Sub-cut (16) 1 $\frac{1}{2}$ " cornerstone squares.

* (6) 2 $\frac{1}{2}$ " x WOF strips for binding.

Fabric G (8000-66 Vine - Green), cut:

* (5) 4" x WOF strips. Sub-cut (96) 2" x 4" rectangles (Sections A2, A3).

Fabric H (1351 Just Color! - Pigment White), cut:

* (3) 1 $\frac{1}{2}$ " x WOF strips. Sub-cut (12) 1 $\frac{1}{2}$ " x 8" sashing rectangles.

* (6) 1 $\frac{3}{4}$ " x WOF strips.

* (5) 3 $\frac{1}{2}$ " x WOF strips. Sub-cut (48) 3 $\frac{1}{2}$ " squares (Section A1).

* (1) 8" x WOF strip. Sub-cut (28) 1 $\frac{1}{2}$ " x 8" sashing rectangles, for a total of 40.

* (5) 1 $\frac{1}{2}$ " x WOF strips for border 1.

Block Assembly

1. Print 48 foundation piecing templates (or 8 pages of 6). Beginning with sections A1 and A2, paper piece each section referring to Table 1 below for fabric placement. Note that you will place and pin the fabrics on the backside of the template, flip the template over, and stitch the seams on the printed side of the paper. Trim the seam allowance to $\frac{1}{4}$ " before pressing open and adding the next fabric piece. Press open, trim along the outside line, and remove the paper (*Figure 1*). Make (48) 3" units.

Section A1 3" 1351 Just Color! Pigment White square	Sections A2 and A3 2" x 4" 8000-66 Vine Green rectangles
--	---



Figure 1 - Make (48) 3" units.

Sewing

2. Sew a 1¾" 1351 Just Color! - Pigment White strip to a 1¾" 8003-66 Bunnies – Green strip. Do not press yet. Make 2 strip sets. Crosscut the strip sets into (48) 1¾" segments. Press the segments open with the seam toward the darker fabric. Repeat with the remaining Pigment White strips and 1¾" 7995-33 Spots – Rust strips to make 2 strip sets. Cut into (48) 1¾" segments. Sew together one segment of each type to make a 4-patch (*Figure 2*). Press the seam open. Repeat to make (48) 3" units.



Figure 2 - Make (48) 3" units.

3. Gather the 3" 7995-33 Spots – Rust squares and the Steps 1-2 units. Arrange them in 3 rows of 3 as shown. Sew the units into rows, press the seams in opposite directions, then sew the rows together to make (12) 8" blocks (*Figure 3*). Press the seams open.

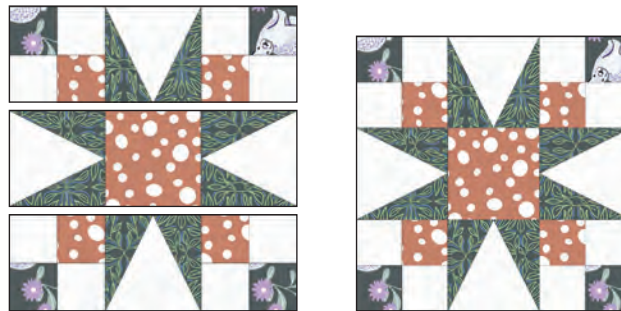


Figure 3 – Make (12) 8" blocks.

Quilt Top Assembly

(Follow the quilt diagram and photograph while assembling the quilt top.)

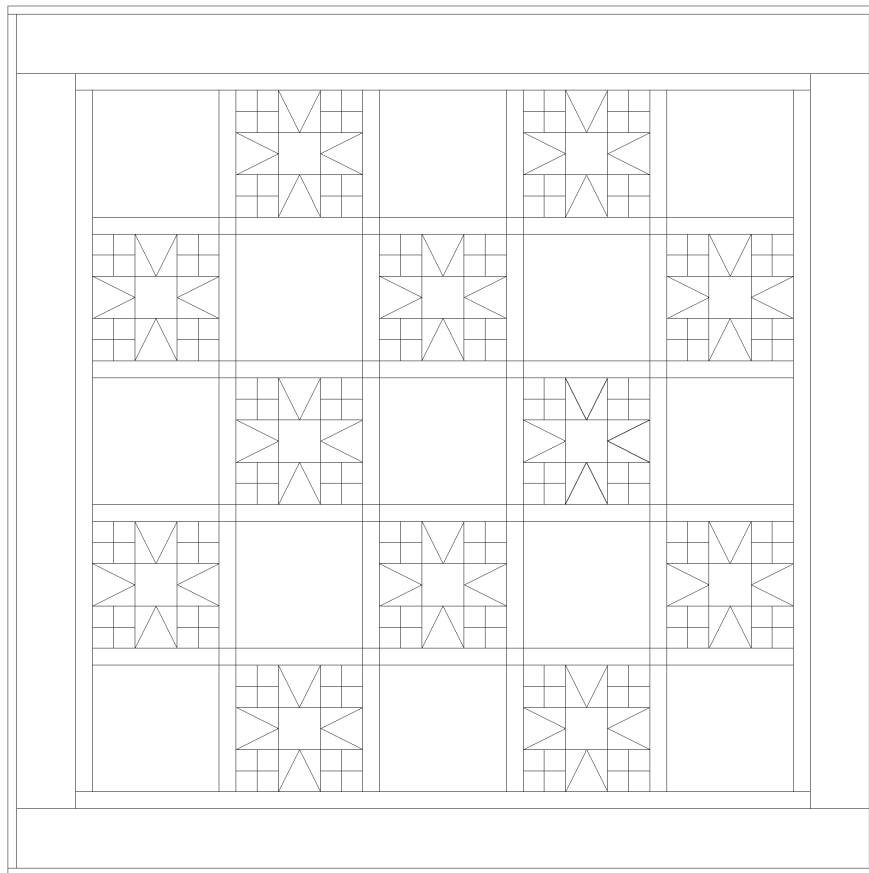
4. Referring to the quilt photo for block placement and color orientation, lay out the blocks and the 1½" x 8" Pigment White sashing rectangles in five rows, and join the blocks and sashing strips together in each row. Press the seams toward the sashing.
5. To make the horizontal sashing rows, sew together 5 Pigment White sashing rectangles and (4) 1½" 1351 Just Color! - Slate cornerstone squares. Repeat to make 4. Press the seams toward the sashing.
6. Matching adjacent seams, sew the block and sashing rows together. Press the seams in one direction.
7. For border 1, sew (5) 1½" Fabric F strips together end to end using diagonal seams. Measure the vertical length of the quilt top through the center and cut two border strips that length. Sew 1 strip to each side of the quilt top. Press the seams toward the center. Measure the width of the quilt top through the center. Cut 2 strips that length and sew one to the top and one to the bottom. Press.
8. Repeat Step 7 with the (5) 4" Fabric E strips to make and add border 2.

Layering, Quilting, and Finishing

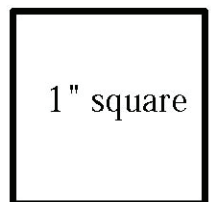
9. Create a quilt sandwich with the batting between the quilt top and the backing. Pin or baste layers together, mark the quilting design, and quilt by hand or machine. When the quilting is complete, remove pins or basting and trim batting and backing even with the raw edges of the quilt top.

Binding

10. Join the (6) 2½" Fabric F binding strips together end to end using a diagonal seam to make one long strip. Fold in half lengthwise with wrong sides facing, and press. Sew binding to the edges of the quilt top, mitering corners, and overlapping ends. Fold the binding to the back of the quilt and stitch it in place by hand to finish.



Quilt Diagram



©2024 Studio e Fabrics®

Every effort has been made to ensure that all projects are error free. All the information is presented in good faith; however, no warranty can be given nor results guaranteed as we have no control over the execution of instructions. Therefore, we assume no responsibility for the use of this information or damages that may occur as a result. When errors are brought to our attention, we make every effort to correct and post a revision as soon as possible. Please make sure to check www.studioefabrics.net for pattern updates prior to starting the project. We also recommend that you test the project prior to cutting for kits. Finally, all free projects are intended to remain free to you and are not for resale.

