

Winter Love Throw



Finished Size: 48" x 64" (1.22m x 1.63m)

Finished Block Size: 10"

Fabric Collection Name and Fabric Designer: **Snowy Days & Frosty Nights by Kathi Campbell/Heart to Hand**

Technique: **Piecing and Machine Appliqué**

Designed by: **Denise Russell of Pieced Brain**

Skill Level: **Advanced Beginner**

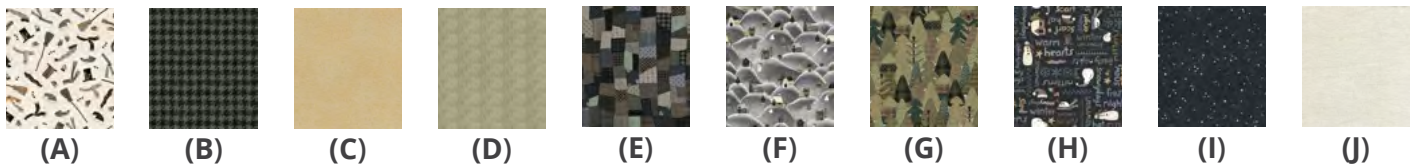
Tech Edited by: **Lisa Visel of Mountain View Quilts**

Winter Love Throw

Fabric Requirements

DESIGN	COLOR	ITEM ID	YARDAGE
(A) Snowman Accessories	Cream	8460-14	$\frac{3}{8}$ yard (0.34m)
(B) Houndstooth	Green/Black	8461-60	$\frac{7}{8}$ yard (0.80m)
(C) Striped Woolen Texture	Sepia	8462-34	$\frac{3}{4}$ yard (0.69m)
(D) Striped Woolen Texture	Sage	8462-61	$\frac{3}{4}$ yard (0.69m)
(E) Blanket Stitch Patchwork	Slate	8463-79	$\frac{3}{8}$ yard (0.34m)
(F) Snowville	Storm	8464-93	$\frac{1}{4}$ yard (0.23m)
(G) Woolen Forest	Moss	8465-62	$\frac{3}{8}$ yard (0.34m)
(H) Snow Many Words	Graphite	8466-97	1 $\frac{1}{8}$ yards (1.03m)
(I) It's Snowing	Graphite	8467-97*	$\frac{5}{8}$ yard (0.57m)
(J) Peppered Cottons	Oyster	Oyster-35	$\frac{7}{8}$ yard (0.80m)

* includes binding



Backing (Purchased Separately)

44" (1.12m) wide

Snowman Accessories Cream 8460-14 3 $\frac{1}{4}$ yards (2.97m)

OR

108" (2.74m) wide 1 $\frac{5}{8}$ yards (1.49m)



Backing
44"

Additional Materials:

- Fusible web
- 100% cotton thread in colors to match
- Batting: 56" x 72" (1.42m x 1.83m)
- Thread and sewing supplies

All possible care has been taken to ensure the accuracy of this pattern. We are not responsible for printing errors or the manner in which individual work varies.
Please read the instructions carefully before starting this project. If kitting it is recommended a sample is made to confirm accuracy.

All free projects are intended to remain free and are not for resale.

Winter Love Throw

Cutting

Notes:

- Please make sure to check www.studioefabrics.net for pattern updates prior to starting the project.
- All strips are cut across the width of fabric (WOF) from selvage to selvage edge unless otherwise noted.

Fabric A, cut:

- Fussy cut (2) stars using Template D
(1) 3½" x WOF, subcut
(8) 3½" squares

Fabric B, cut:

- (1) 10½" x WOF, subcut
(2) 10½" squares and (2) 9" squares
(1) 9" x WOF, subcut
(2) 9" squares and (4) 2¼" x 22"
(1) 2¼" x WOF, fussy cut (16) flower tips using Template C and (2) flower centers using Template B

Fabric C, cut:

- (2) 5½" x WOF, subcut
(12) 5½" squares
(2) 3" x WOF, subcut
(24) 3" squares

From remaining fabric, fussy cut
(2) flowers using Template A

Fabric D, cut:

- (1) 9" x WOF, subcut
(4) 9" squares
(3) 2¼" x WOF
From remaining fabric, fussy cut
(2) flowers using Template A
(32) 2" squares

Fabric E, cut:

- (1) 10½" x WOF, subcut
(6) 5½" x 10½" rectangles

Fabric F, cut:

- (2) 2½" x WOF, for sashing, subcut
to 2½" x 40½"

Fabric G, cut:

- (1) 10½" x WOF, subcut
(4) 5½" x 10½" rectangles

Fabric H, cut:

- (1) 10½" x WOF, subcut
(6) 5½" x 10½" rectangles
(6) 3½" x WOF for border 2

Fabric I, cut:

- (6) 2½" x WOF, for binding

Fabric J, cut:

- (1) 10½" x WOF, subcut
(2) 10½" squares and (3) 5½" squares
(1) 5½" x WOF, subcut
(1) 5½" square (total of 4)
(8) 3" squares
(2) 1½" x WOF for sashing, subcut
to 1½" x 40½"
(5) 1½" x WOF for border 1

All possible care has been taken to ensure the accuracy of this pattern. We are not responsible for printing errors or the manner in which individual work varies.

Please read the instructions carefully before starting this project. If kitting it is recommended a sample is made to confirm accuracy.

All free projects are intended to remain free and are not for resale.

Winter Love Throw

Sewing

Notes:

- All seam allowances are $\frac{1}{4}$ " (0.64cm).
- Sew pieces with right sides together.
- Press seam allowances open unless otherwise indicated.

Heart Blocks

1. Draw a diagonal line on the reverse side of the 3" and $5\frac{1}{2}$ " **Fabric C** squares. With right sides together, place one marked 3" **Fabric C** square on a corner of a $5\frac{1}{2}$ " x $10\frac{1}{2}$ " **Fabric H** rectangle and stitch on the drawn line. Trim the seam allowance to $\frac{1}{4}$ " and press open. Repeat with the adjacent corner of the same rectangle. Noting the sewing line direction, sew a $5\frac{1}{2}$ " **Fabric C** square to the bottom left corner of the **Fabric H** rectangle. Make (3) total. Repeat with (3) more **Fabric H** rectangles, (6) 3" and (3) $5\frac{1}{2}$ " **Fabric C** squares, except sew the $5\frac{1}{2}$ " **Fabric C** squares to the bottom right corner. Sew the units together to make (3) $10\frac{1}{2}$ " Heart blocks and press the seams open. (**Figs. 1 - 1b**).

Fig. 1

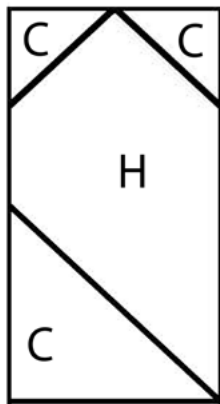


Fig. 1a

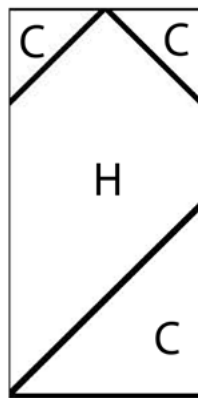


Fig. 1b

Heart Block
Make 3



All possible care has been taken to ensure the accuracy of this pattern. We are not responsible for printing errors or the manner in which individual work varies.

Please read the instructions carefully before starting this project. If kitting it is recommended a sample is made to confirm accuracy.

All free projects are intended to remain free and are not for resale.

Winter Love Throw

2. Repeat step 1 with the remaining 3" and 5½" **Fabric C** squares, the 5½" x 10½" **Fabric E** rectangles, the 3" and 5½" **Fabric J** squares, and the 5½" x 10½" **Fabric G** rectangles to make (3) and (2) 10½" blocks, respectively (**Figs. 2 and 2a**).

Fig. 2
Heart Block
Make 3



Fig. 2a
Heart Block
Make 2



Modified Greek Square Blocks

3. Draw a diagonal line twice on the reverse side of each 9" **Fabric D** square. Layer a marked **Fabric D** square on top of a 9" **Fabric B** square, right sides together. Sew on both sides of each line using a ¼" seam allowance. Cut each set of sewn squares in half vertically and horizontally, then cut on the drawn lines to make 8-at-a-time half-square triangles. Press the seams toward the darker fabric and trim each half-square triangle to 3½" squares (**Fig. 3 - 3a**). Sew a 2" **Fabric D** square to the darker corner, trim the seams to ¼", and press open toward the corner. Make (32) total 3½" square Corner units (**Fig. 3b**).

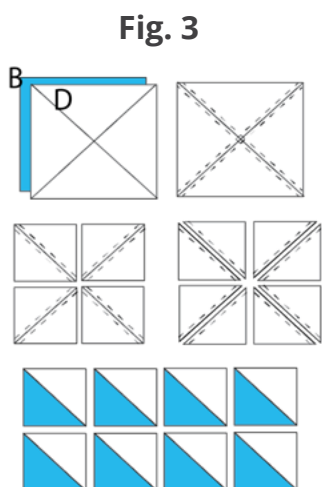


Fig. 3a
Make 32

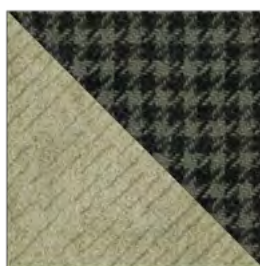


Fig. 3b
Corner unit
Make 32



All possible care has been taken to ensure the accuracy of this pattern. We are not responsible for printing errors or the manner in which individual work varies.

Please read the instructions carefully before starting this project. If kitting it is recommended a sample is made to confirm accuracy.

All free projects are intended to remain free and are not for resale.

Winter Love Throw

4. Sew a 2¼" **Fabric D** strip to a 2¼" **Fabric B** strip to make a strip set. Cut remaining 2¼" **Fabric D** strips in half to yield (4) total half-strips. Sew these to the 2¼" x 22" **Fabric B** strips. Press seams toward the darker fabric. Crosscut the strip sets into (32) 3½" x 4" segments (**Fig. 4 and 4a**).

Fig. 4



Fig. 4a

Make 32



5. Noting fabric orientation, sew (2) step 4 segments to opposite sides of a 3½" **Fabric A** square. Press seams toward the center (**Fig. 5**). Repeat to make (8) total center strips. Sew a step 4 segment between (2) corner units and press seams away from the center. Note the orientation of the corner units. Repeat to make (16) strips (**Fig. 5a**). Sew a strip to the top and bottom of the center strips, and press seams in one direction. Make (8) total 10½" Square blocks (**Fig. 5b**).

Fig. 5

Make 8

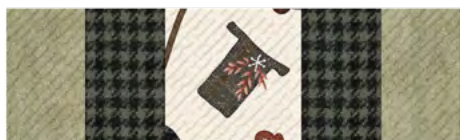


Fig. 5a

Make 16



Fig. 5b

Square Block

Make 8



All possible care has been taken to ensure the accuracy of this pattern. We are not responsible for printing errors or the manner in which individual work varies.

Please read the instructions carefully before starting this project. If kitting it is recommended a sample is made to confirm accuracy.

All free projects are intended to remain free and are not for resale.

Winter Love Throw

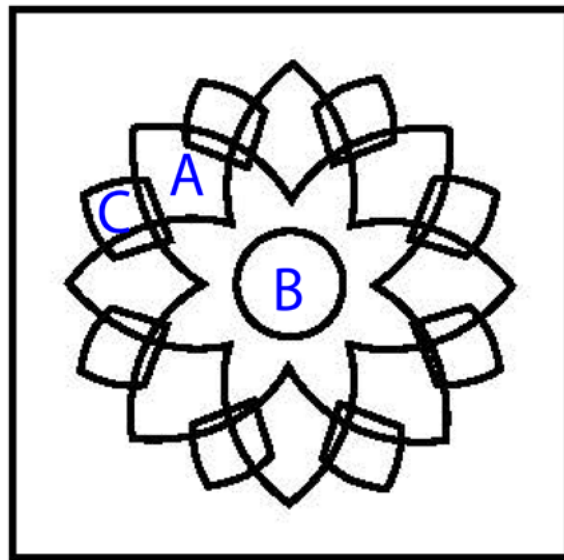
Star Blocks

6. Place Template D onto a lightbox or windowpane. Layer the fusible web on top and trace on the smooth side. Make (2). Cut each shape 1/8" outside the outline and fuse to the wrong side of **Fabric A**. Cut on the outline and remove the paper backing.
7. Fold and crease the 10½" **Fabric B** squares in half in each direction. Position the star shapes on the squares, using the creased folds as guidelines, and fuse them according to the manufacturer's instructions. Machine appliqué using matching thread and the blanket stitch. Make (2) 10½" Star blocks.

Flower Blocks

8. Repeat step 6 with Templates A, B, and C. Make (4) Template A , (2) Template B, and (16) Template C. Fuse (2) Template A to (2) **Fabric C** and (2) to **Fabric D**. Fuse Template B and C to **Fabric B**.
9. Repeat step 7 with the 10½" **Fabric J** squares and the flower shapes to complete (2) 10½" Flower blocks. (**Fig. 6**)

Fig. 6
Template Placement



All possible care has been taken to ensure the accuracy of this pattern. We are not responsible for printing errors or the manner in which individual work varies.

Please read the instructions carefully before starting this project. If kitting it is recommended a sample is made to confirm accuracy.

All free projects are intended to remain free and are not for resale.

Winter Love Throw

Quilt Top Assembly

Follow the Quilt Layout Diagram (page 9) while assembling the quilt top.

10. Referring to the quilt photo for block placement, lay out (5) rows of (4) blocks. Sew the blocks together into a row. Press the seams in one direction. Rows will measure 10½" x 40½".
11. Arrange the **Fabric F** sashing strips above and below the center row. Add the **Fabric J** strips below row 1 and above row 5. Sew the block and horizontal sashing rows together. Press the seams in one direction. The quilt center should measure 40½" x 56½".
12. For border 1, sew the (5) 1½" **Fabric J** border strips together end to end using diagonal seams. Measure the vertical length of the quilt through the center and cut (2) border strips that length. Sew one strip to each side of the quilt and press the seams toward the borders. Measure the width of the quilt through the center. Cut (2) border strips that length and sew one to the top and one to the bottom. Press the seams toward the borders.
13. Repeat step 12 with the (6) 3½" **Fabric H** strips to make and add border 2. Quilt top should measure 48 ½" x 64 ½" unfinished.

Finishing

14. Sew together the (6) 2½" **Fabric I** binding strips end to end using diagonal seams. Press the seams open. Press the binding strip in half with the wrong sides together.
15. Layer the backing (wrong side up), batting, and quilt top (right side up). Baste the layers together and quilt as desired. Trim excess batting and backing even with the top of the quilt.
16. Leaving an 8" tail of binding and beginning along an edge of the quilt top, matching the raw edges of the binding to the raw edges of the quilt. Sew the binding to the outside edge around all four sides and miter corners. Stop sewing approximately 12" from where you started and backstitch.
17. Lay both loose ends of the binding flat along the quilt edge. Where these two loose ends meet, fold them back onto themselves and press to form a crease. Using this crease as your stitching line, sew the two open ends of the binding together, with the right sides matching. Trim the seam to ¼" and press it open. Finish sewing the binding to the quilt.
18. Turn the binding over the raw edge to the back of the quilt and hand or machine stitch in place.

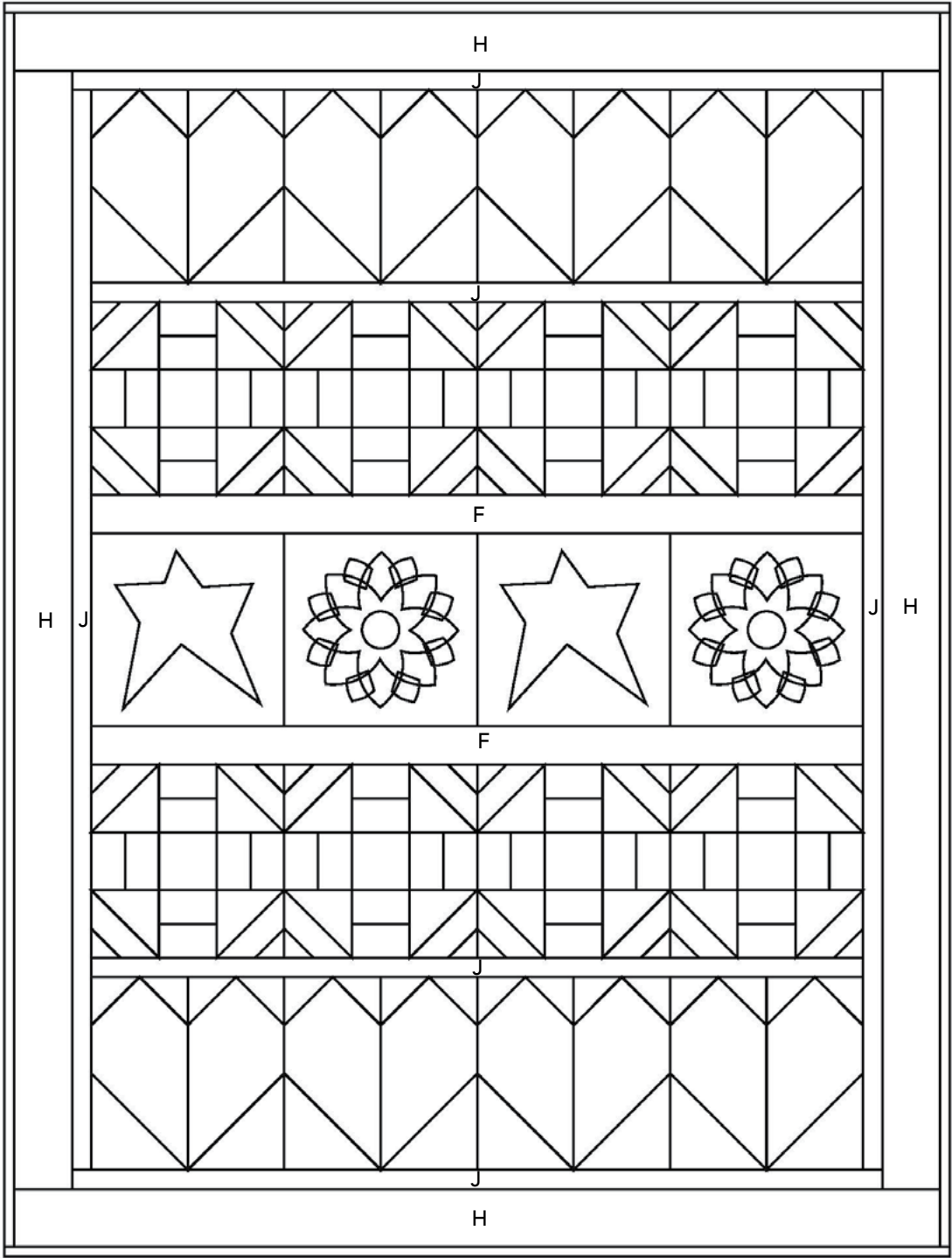
All possible care has been taken to ensure the accuracy of this pattern. We are not responsible for printing errors or the manner in which individual work varies.

Please read the instructions carefully before starting this project. If kitting it is recommended a sample is made to confirm accuracy.

All free projects are intended to remain free and are not for resale.

Winter Love Throw

Quilt Layout



*All possible care has been taken to ensure the accuracy of this pattern. We are not responsible for printing errors or the manner in which individual work varies.
Please read the instructions carefully before starting this project. If kitting it is recommended a sample is made to confirm accuracy.
All free projects are intended to remain free and are not for resale.*