

Tales of the Tundra

by Katy Lipscomb







Quilt Size: 49" x 61" (1.24m x 1.55m)

Skill Level: Intermediate

Jolly Jig Jog Quilt
Designed by Laureen Smith
www.tourmalinethymequilts.com

Jolly Jig Jog Quilt Ordering Guide

| SKU | Yards | Meters | 6 Kits | 12 Kits |
|--|-----------|--------|--------|---------|
|  8510-59 | 1 1/2 yds | 1.37m | 1 bolt | 2 bolts |
|  8510-77 | 1/2 yds | 0.46m | 1 bolt | 1 bolt |
|  8511-78* | 1 yd | 0.91m | 1 bolt | 1 bolt |
|  8513- 51 | 2/3 yds | 0.61m | 1 bolt | 1 bolt |
|  8516P-76 | 1 yd | 0.91m | 1 bolt | 1 bolt |

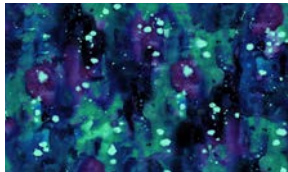
Backing Fabric Option

| | | | | |
|---------|-----------|-------|---------|---------|
| 8512-72 | 3 7/8 yds | 3.54m | 2 bolts | 4 bolts |
|---------|-----------|-------|---------|---------|

* Indicates binding fabric.

FQ = 18" x 22" (0.45m x 0.55m)

All fabric quantities are based on 15yd bolts unless otherwise indicated.



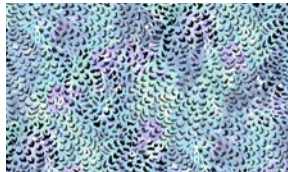
8510-59
Watercolor Texture
Nightshade



8510-77
Watercolor Texture
Cyan



8511-78*
Diagonal Trees
Mint Blue



8513- 51
Feathers Texture
Lavendar Blue



8516P-76
36- Inch Panel
Northern Lights