

Beetlejewels

by Sugarly Designs



Quilt Size: 52" x 62" (1.32m x 1.57m)

Skill Level: Advanced Beginner

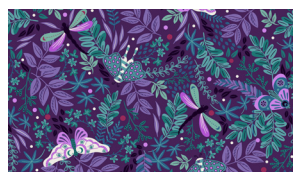
Nature's Palette Quilt

Designed and sold by Denise Russell/Studio e Fabrics

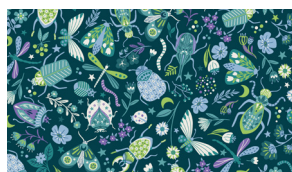
www.studioefabrics.net

Nature's Palette Quilt Ordering Guide

SKU	Yards	Meters	12 Kits	24 Kits
7775-59	1/3 yds	0.30m	1 bolt	1 bolt
7776-76	1/2 yds	0.46m	1 bolt	1 bolt
7777-11	1/3 yds	0.30m	1 bolt	1 bolt
7779-17	1/3 yds	0.30m	1 bolt	1 bolt
7780-59	1/4 yds	0.23m	1 bolt	1 bolt
7781-79*	1/2 yds	0.46m	1 bolt	1 bolt
7782-11	1/4 yds	0.23m	1 bolt	1 bolt
7783-64	1/4 yds	0.23m	1 bolt	1 bolt
7787P-59	1 yd	0.91m	1 bolt	2 bolts
1351-Pigment White	1 1/4 yds	1.14m	2 bolts	3 bolts
Backing Fabric Option				
7782-11	3 1/2 yds	3.20m	3 bolts	6 bolts
* Indicates binding fabric. FQ = 18" x 22" (0.45m x 0.55m) All fabric quantities are based on 15yd bolts unless otherwise indicated.				



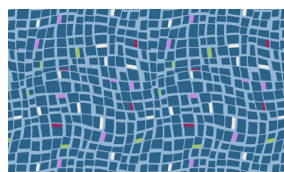
7775-59
Moths and Foliage
Drak Amethyst



7776-76
Large Insects
Dark Teal



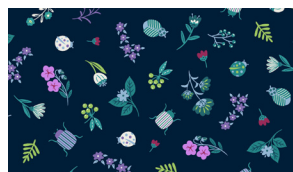
7777-11
Mirrored Moths
Light Blue



7779-17
Small Tile
Blue



7780-59
Tossed Small Insects
Dark Amethyst



7781-79
Dark Tossed Springs
Drak Navy



7782-11
Light Mini Springs
Light Blue



7783-64
Tone-on-Tone Insects
Lime



1351-Pigment White
Just Color!



7787P-59
Panel
Dark Amethyst