

Ashdown Forest

by Chelsea DesignWorks



Quilt Size: 56" x 72" (1.42m x 1.83m)








Skill Level: Advanced Beginner

Blue Blossoms Quilt

Designed by Christine Baker and Nellie Holmes

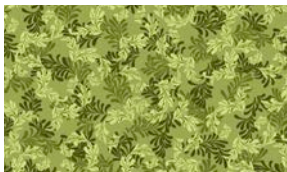
www.uppercanadaquiltworks.com

Blue Blossoms Quilt Ordering Guide

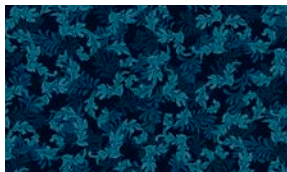
SKU	Yards	Meters	6 Kits	12 Kits
 8401-17	1 3/8 yd	1.26m	1 bolt	2 bolts
 8405-66	3/8 yd	0.34m	1 bolt	1 bolt
 8405-77*	1 5/8 yd	1.49m	1 bolt	2 bolts
 8406-39	3/8 yd	0.34m	1 bolt	1 bolt
 8407-40	2 3/4 yd	2.51m	2 bolts	3 bolts
 8408-17	1/4 yd	0.23m	1 bolt	1 bolt
 8410-39	3/8 yd	0.34m	1 bolt	1 bolt
Backing Fabric Option				
8403-40	4 1/2 yd	4.11m	2 bolts	4 bolts
<p>* Indicates binding fabric. FQ = 18" x 22" (0.45m x 0.55m) All fabric quantities are based on 15yd bolts unless otherwise indicated.</p>				



8401-17
Jacobean Floral
Lt. Blue



8405-66
Acanthus Leaf
Peridot Green



8405-77*
Acanthus Leaf
Midnight Blue



8406-39
Flowering Vine Toss
Dk. Chocolate



8407-40
Snail
Pale Ecru



8408-17
Open Sprigs
Lt. Blue



8410-39
Mushroom Toss
Mushroom