

Ashdown Forest

by Chelsea DesignWorks



Quilt Size: 68" x 68" (1.73m x 1.73m)

Skill Level: Pieced

Giant Star Throw
Designed by Daniela Stout
www.cozyquilt.com

Giant Star Throw Ordering Guide

SKU	Yards	Meters	6 Kits	12 Kits
 8401-17	1/4 yd	0.23m	1 bolt	1 bolt
 8401-40	1 5/8 yd	1.49m	1 bolt	2 bolts
 8402-04	1/4 yd	0.23m	1 bolt	1 bolt
 8403-40	1/4 yd	0.23m	1 bolt	1 bolt
 8404-77*	5/8 yd	0.57m	1 bolt	1 bolt
 8405-66	1/4 yd	0.23m	1 bolt	1 bolt
 8405-77	2 1/3 yd	2.13m	1 bolt	2 bolts
 8406-90	1/4 yd	0.23m	1 bolt	1 bolt
 8407-40	3/4 yd	0.69m	1 bolt	1 bolt
 8409-67	1/4 yd	0.23m	1 bolt	1 bolt

Backing Fabric Option

8402-77	4 1/4 yd	3.89m	2 bolts	4 bolts
---------	----------	-------	---------	---------

* Indicates binding fabric.

FQ = 18" x 22" (0.45m x 0.55m)

All fabric quantities are based on 15yd bolts unless otherwise indicated.



8401-17
Jacobean Floral
Lt. Blue



8401-40
Jacobean Floral
Pale Ecru



8402-04
Ogee
White



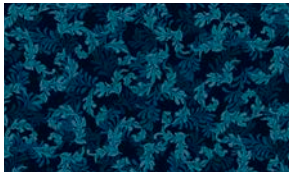
8403-40
Deer Scenic
Pale Ecru



8404-77*
Diagonal Stripe
Midnight Blue



8405-66
Acanthus Leaf
Peridot Green



8405-77
Acanthus Leaf
Midnight Blue



8406-90
Flowering Vine Toss
Silver Gray



8407-40
Snail
Pale Ecru



8409-67
Ditsy
Dk. Green

Studioe Fabrics

49 West 37th Street - New York, NY 10018 - Tel: 800-294-9495 - Fax: 212-679-4578 - www.studioefabrics.net