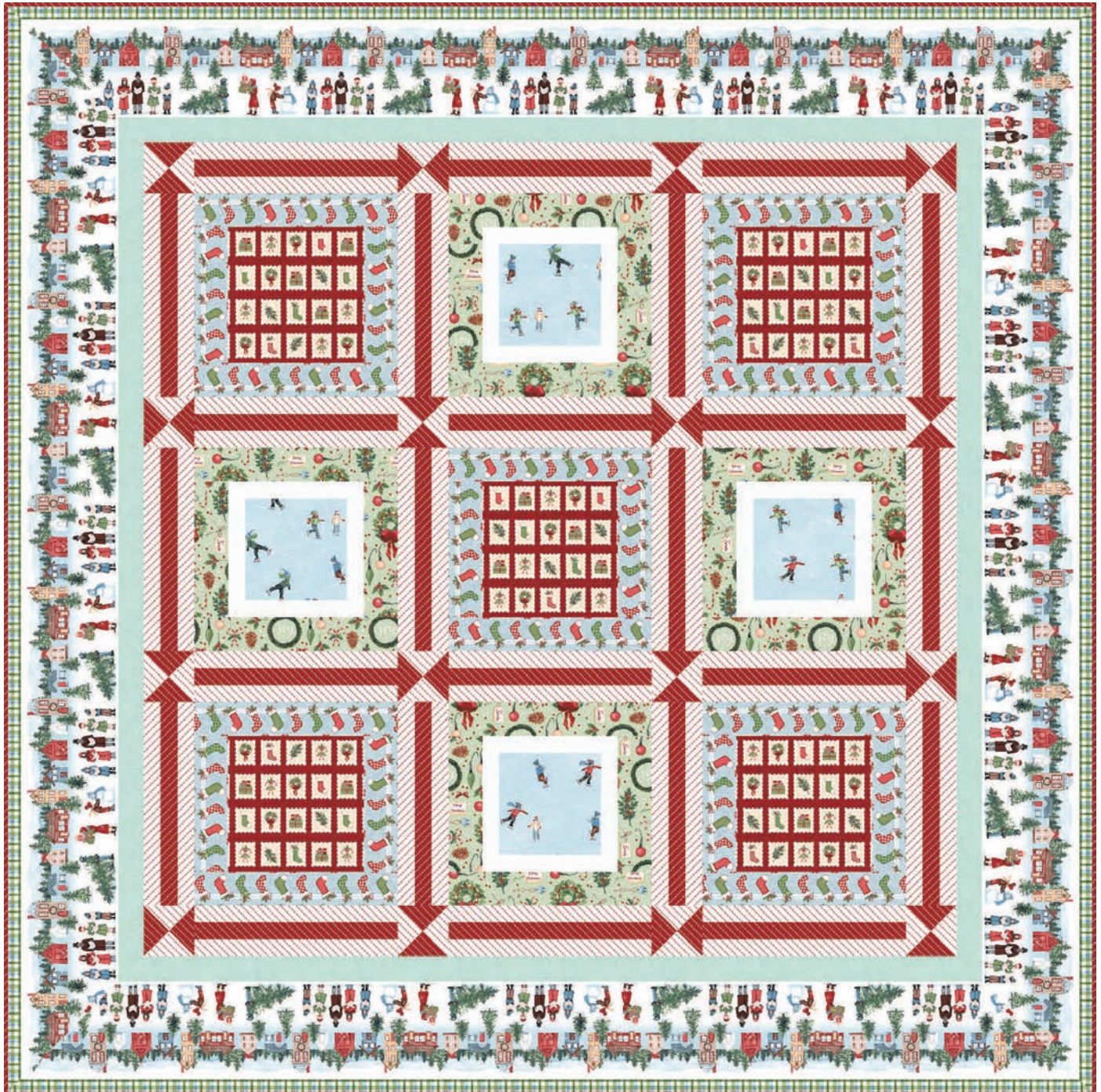


Christmas Village

by Rebecca Canale










Quilt Size: 64" x 64" (1.63m x 1.63m)

Skill Level: Intermediate

Holiday Greetings Quilt
Designed by The Whimsical Workshop
www.studioefabrics.net

Holiday Greetings Quilt Ordering Guide

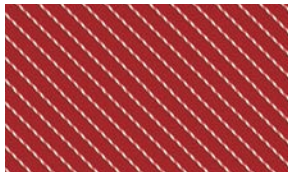
SKU	Yards	Meters	6 Kits	12 Kits
 8306-11	5/8 yd	0.57m	1 bolt	1 bolt
 8307-08	1 yd	0.91m	1 bolt	1 bolt
 8307-88*	1 1/8 yd	1.03m	1 bolt	1 bolt
 8308-11	1/4 yd	0.23	1 bolt	1 bolt
 8310-88	5/8 yd	0.57m	1 bolt	1 bolt
 8312-66	1/2 yd	0.46m	1 bolt	1 bolt
 8313-08	2 yds	1.83m	1 bolt	2 bolts
White Sugar-09	1/4 yd	0.23	1 bolt	1 bolt
1351-Robin's Egg	1/2 yd	0.46m	1 bolt	1 bolt
Backing Fabric Option				
8311-06	4 yds	3.66m	2 bolts	4 bolts
<p>* Indicates binding fabric. FQ = 18" x 22" (0.45m x 0.55m) All fabric quantities are based on 15yd bolts unless otherwise indicated.</p>				



8306-11
Stockings
Blue



8307-08
Twine
White



8307-88*
Twine
Red



8308-11
Ice Skaters
Blue



8310-88
Stamps
Red



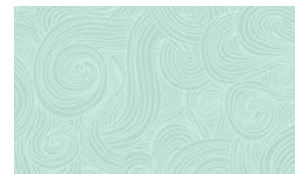
8312-66
Christmas Décor
Green



8313-08
Christmas Village Stripe
White / Multi



White Sugar-9
Peppered Cottons
White Sugar



1351-Robin's Egg
Just Color!
Robin's Egg