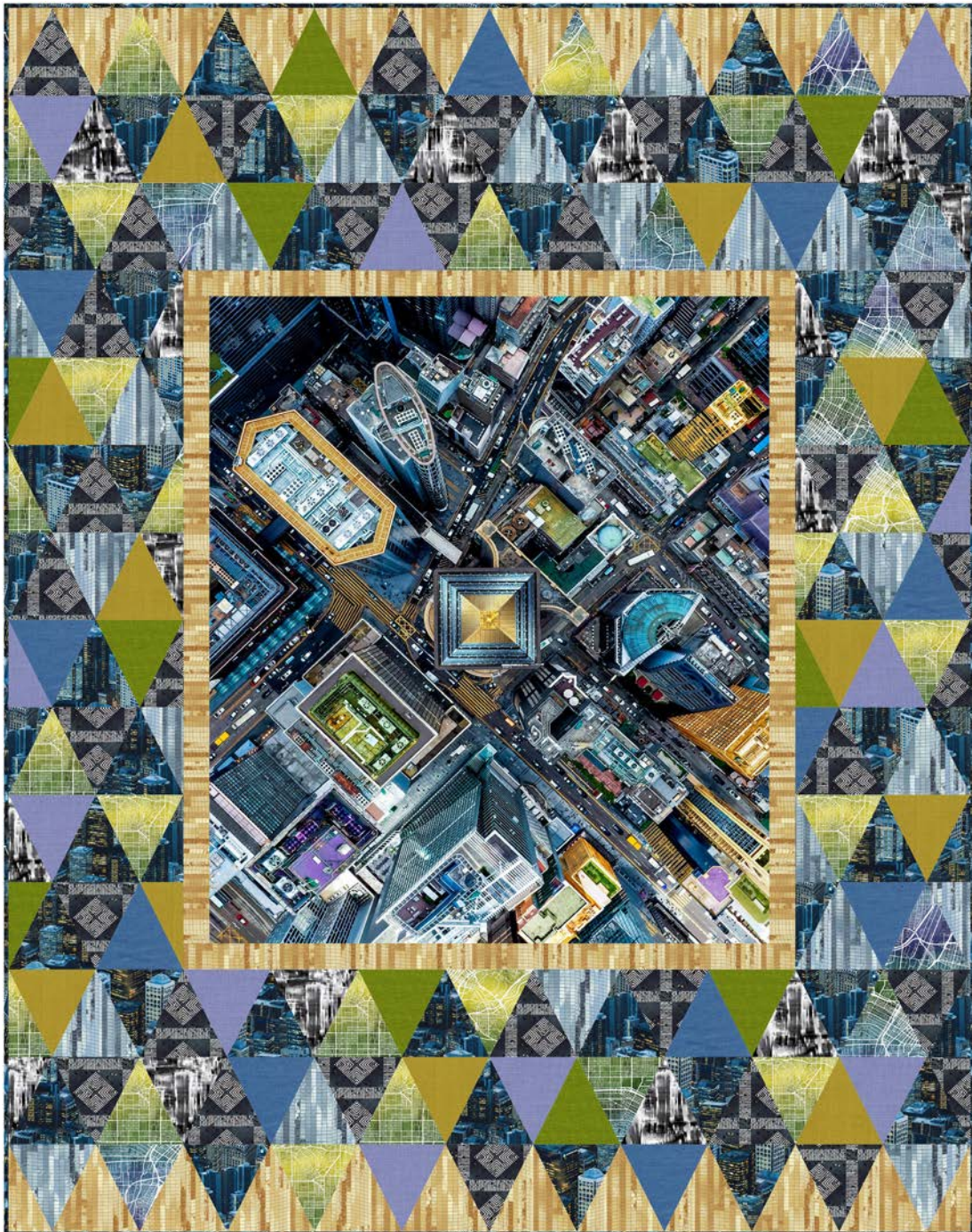


City Slicker

by Funny Girl



Quilt Size: 55½" x 70½" (1.41m x 1.79m)

Skill Level: Advanced Beginner

Flatiron Quilt
Designed by Susan Guzman
www.studioefabrics.net

Flatiron Quilt Ordering Guide

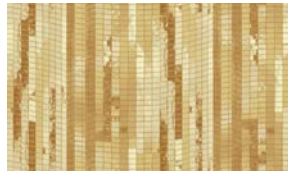
SKU	Yards	Meters	6 Kits	12 Kits
 8413-23	1 yd	0.91m	1 bolt	1 bolt
 8414-77*	1 7/8 yds	1.71m	1 bolt	2 bolts
 8415-47	1 yd	0.91m	1 bolt	1 bolt
 8415-76	3/4 yds	0.69m	1 bolt	1 bolt
 8416-57	1 yd	0.91m	1 bolt	1 bolt
 8417P-77	1 yd	0.91m	1 bolt	1 bolt
Blue Bell-17 (10yd bolt)	3/8 yds	0.34m	1 bolt	1 bolt
Green Tea-22 (10yd bolt)	3/8 yds	0.34m	1 bolt	1 bolt
Ginkgo Gold-27 (10yd bolt)	3/8 yds	0.34m	1 bolt	1 bolt
Blue Jay-41 (10yd bolt)	3/8 yds	0.34m	1 bolt	1 bolt
 5238-90 (10yd bolt)	5/8 yds	0.57m	1 bolt	1 bolt
Backing Fabric Option				
8413-23	3 5/8 yds	3.31m	2 bolts	3 bolts
<p>* Indicates binding fabric. FQ = 18" x 22" (0.45m x 0.55m) All fabric quantities are based on 15yd bolts unless otherwise indicated.</p>				



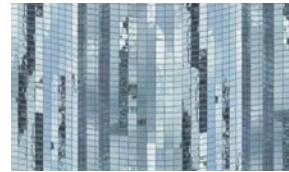
8413-23
Intersection
Asphalt



8414-77*
Nightlife
Blue Steel



8415-47
Gold Windows
Gold



8415-76
Blue Windows
Blue Glass



8416-57
Grid Map
Ombre



Blue Bell-17
Peppered Cottons
Blue Bell



Green Tea-22
Peppered Cottons
Green Tea



Ginkgo Gold-27
Peppered Cottons
Ginkgo Gold



Blue Jay-41
Peppered Cottons
Blue Jay



5238-90
Prismachrome



8417P-77
Downtown
Blue Steel