

# Halloween Spook Quilt



Finished Quilt Size: **48" x 60" (1.22m x 1.52m)**

Finished Block Size: **12" x 12" (30.48cm x 30.48cm)**

Fabric Collection Name & Fabric Designer: **Fear Factory by Lena Art Studio**

Technique: **Pieced**

Designed by: **Lisa Swenson Ruble, Quilty Zest**

Skill Level: **Advanced Beginner**

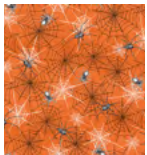
Tech Edited by: **Quilt Pattern Writers**

# Halloween Spook Quilt

## Fabric Requirements

DESIGN	COLOR	ITEM ID	YARDAGE
(A) Spiderweb and Spiders Allover	Orange	8340-33	1 yard (0.91m)
(B) Skull and Hand Toss	Black	8341-99	1/3 yard (0.30m)
(C) Crow Allover	White	8343-09	1 5/8 yards (1.49m)
(D) Rose and Spider Toss	Black	8344-99*	1 yard (0.91m)
(E) Small Skull Toss	Black	8345-99	5/8 yard (0.57m)
(F) Mini Spider Allover	Gray	8346-93	3/4 yard (0.69m)
(G) Blocks Panel	Black	8347-99	2/3 yard (0.61m)

\* includes binding



(A)



(B)



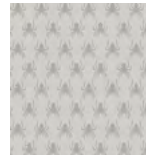
(C)



(D)



(E)



(F)



(G)

## Backing (Purchased Separately)

44" (1.12m) wide

Skull and Hand Toss

Black

8341-99

3 1/4 yards (2.97m)

OR

108" (2.74m) wide

1 5/8 yards (1.49m)



Backing  
44"

## Additional Materials:

- 100% cotton thread in color to match
- 56" x 68" (1.42m x 1.73m) batting

*All possible care has been taken to ensure the accuracy of this pattern. We are not responsible for printing errors or the manner in which individual work varies.*

*Please read the instructions carefully before starting this project. If kitting it is recommended a sample is made to confirm accuracy.*

*All free projects are intended to remain free and are not for resale.*



# Halloween Spook Quilt



## Cutting

### Notes:

- Please make sure to check *studioefabrics.net* for pattern updates prior to starting the project.
- All strips are cut across the width of fabric (WOF) from selvage to selvage edge unless otherwise noted.

### Fabric A, cut:

- (4) 3½" x WOF; subcut
- (48) 3½" squares
- (5) 2½" x WOF; sew the strips together end to end with 45-degree diagonal seams and cut
- (2) 2½" x 48½"
- (2) 2½" x 40½"

### Fabric B, cut:

- (1) 6½" x WOF; subcut
- (6) 6½" squares

### Fabric C, cut:

- (2) 4½" x LOF; subcut
- (2) 4½" x 52½" LOF
- (4) 4½" x remaining WOF; sew the strips together end to end with 45-degree diagonal seams and cut
- (2) 4½" x 48½"

### Fabric D, cut:

- (1) 12½" x WOF; subcut
- (12) 1½" x 12½" rectangles
- (12) 1½" x 10½" rectangles
- (6) 2½" x WOF for the binding

### Fabric E, cut:

- (2) 4" x WOF; subcut
- (12) 4" squares
- (3) 3½" x WOF; subcut
- (24) 3½" squares

### Fabric F, cut:

- (2) 4" x WOF; subcut
- (12) 4" squares
- (4) 3½" x WOF; subcut
- (24) 3½" x 6½" rectangles

### Fabric G, cut:

- Fussy cut (6) 10½" squares

*All possible care has been taken to ensure the accuracy of this pattern. We are not responsible for printing errors or the manner in which individual work varies.*

*Please read the instructions carefully before starting this project. If kitting it is recommended a sample is made to confirm accuracy.*

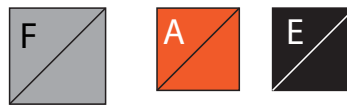
*All free projects are intended to remain free and are not for resale.*

## Block Assembly

### Notes:

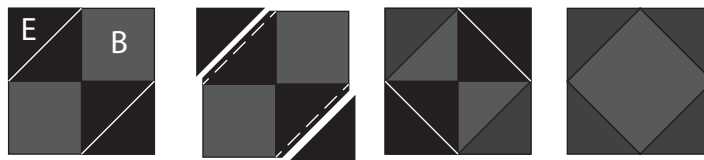
- All seam allowances are  $\frac{1}{4}$ " (.64cm) unless otherwise noted.
  - Sew pieces right sides together. Press seam allowances open unless otherwise indicated.
1. Draw a diagonal line on the wrong side of all 4" **Fabric F** squares and all 3½" **Fabric A** and **Fabric E** squares (**Fig. 1**).

**Fig. 1**



2. Place a marked 3½" **Fabric E** square RST on opposite corners of (1) 6½" **Fabric B** square. Stitch on the drawn line, trim seam allowance to  $\frac{1}{4}$ " and press open. Repeat on the remaining corners to make (1) BE unit (**Fig. 2**). Make a total of (6) BE units.

**Fig. 2**



make 6

3. Place a marked 3½" **Fabric A** square RST on the left end of (1) 3½" x 6½" **Fabric F** rectangle. Stitch on the drawn line, trim seam allowance to  $\frac{1}{4}$ " and press open. Repeat on the opposite end to make (1) AF unit (**Fig. 3**). Make a total of (24) AF units.

**Fig. 3**

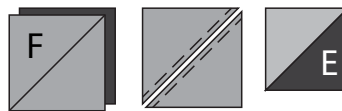


make 24

# Halloween Spook Quilt

4. Place a marked 4" **Fabric F** square RST on (1) 4" **Fabric E** square. Stitch  $\frac{1}{4}$ " on both sides of the drawn line, cut on the line and press open to make (2) EF units (**Fig. 4**). Square up to measure  $3\frac{1}{2}$ " square. Make (24) total EF units.

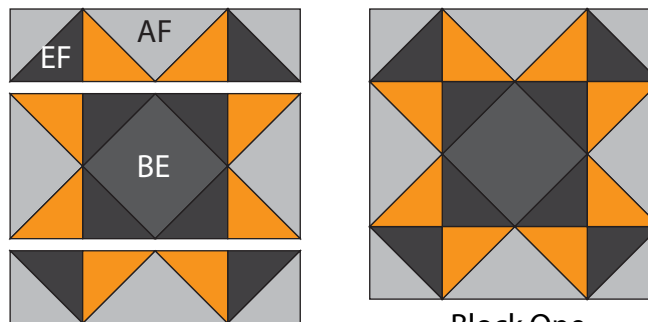
**Fig. 4**



make 24

5. Lay out (4) EF units, (4) AF units and (1) BE unit in (3) rows. Sew into rows and join the rows to make (1) Block One (**Fig. 5**). Make (6) Block One measuring  $12\frac{1}{2}$ " square.

**Fig. 5**



Block One  
make 6

6. Sew  $1\frac{1}{2}$ " x  $10\frac{1}{2}$ " **Fabric D** rectangles to opposite sides of (1)  $10\frac{1}{2}$ " **Fabric G** square. Sew  $1\frac{1}{2}$ " x  $12\frac{1}{2}$ " **Fabric D** rectangles to the top and bottom to make (1) Block Two (**Fig. 6**). Make (6) total Block Two measuring  $12\frac{1}{2}$ " square.

**Fig. 6**



Block Two  
make 6

*All possible care has been taken to ensure the accuracy of this pattern. We are not responsible for printing errors or the manner in which individual work varies.*

*Please read the instructions carefully before starting this project. If kitting it is recommended a sample is made to confirm accuracy.*

*All free projects are intended to remain free and are not for resale.*

## Quilt Top Assembly

**Note:** Follow the Quilt Layout (page 7) while assembling the quilt top.

7. Lay out (6) Block One and (6) Block Two into (4) rows of (3) blocks each. Sew the blocks into rows and join the rows to complete the Quilt Center measuring  $36\frac{1}{2}" \times 48\frac{1}{2}"$ .
8. Sew (1)  $2\frac{1}{2}" \times 48\frac{1}{2}"$  **Fabric A** strip to each side of the Quilt Center. Sew (1)  $2\frac{1}{2}" \times 40\frac{1}{2}"$  **Fabric A** strip to the top and bottom of the Quilt Center.
9. Sew (1)  $4\frac{1}{2}" \times 52\frac{1}{2}"$  **Fabric C** strip to each side of the Quilt Center. Sew (1)  $4\frac{1}{2}" \times 48\frac{1}{2}"$  **Fabric C** strip to the top and bottom to make the quilt top which measures  $48\frac{1}{2}" \times 60\frac{1}{2}"$ .

## Finishing

10. Sew together the (6)  $2\frac{1}{2}" \times$  WOF **Fabric D** binding strips end to end using diagonal seams. Press the seams open. Press the binding strip in half wrong sides together.
11. Layer the backing (wrong side up), batting, and quilt top (right side up). Baste the layers together and quilt as desired. Trim excess batting and backing even with the quilt top.
12. Leaving an 8" tail of binding and beginning along an edge of the quilt top, match raw edges of the binding to the raw edges of the quilt top. Sew the binding to the outside edge around all four sides and miter corners. Stop sewing approximately 12" from where you started and backstitch.
13. Lay both loose ends of binding flat along the quilt edge. Where these two loose ends meet, fold them back onto themselves and press to form a crease. Using this crease as your stitching line, sew the two open ends of the binding together, right sides matching. Trim seam to  $\frac{1}{4}"$  and press seam open. Finish sewing the binding to the quilt top.
14. Turn the binding over the raw edge to the back of the quilt and hand or machine stitch in place.

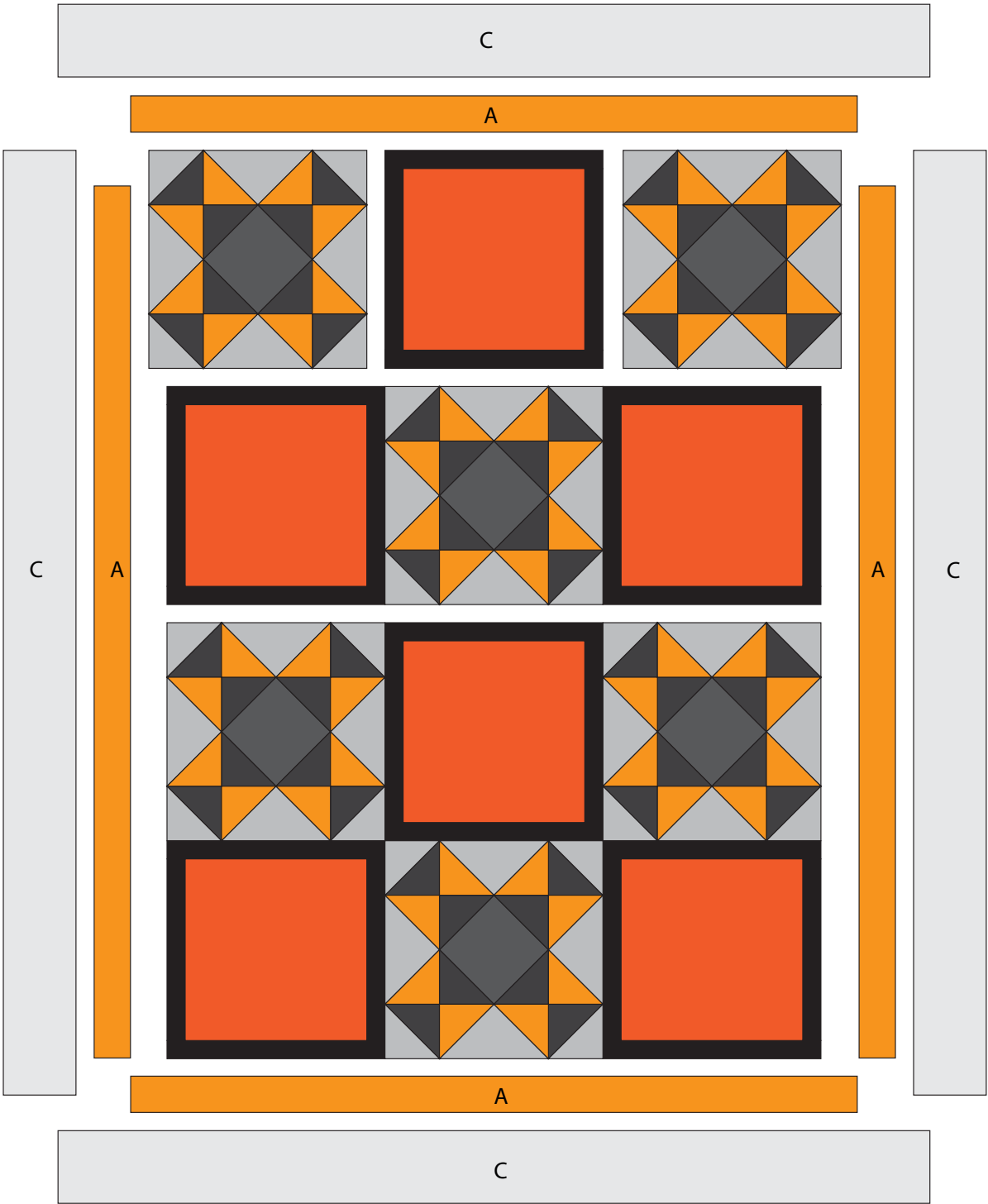
# Halloween Spook Quilt



A Division Of JafTex Corporation  
www.studiofabrics.net

fabrics®

## Quilt Layout



*All possible care has been taken to ensure the accuracy of this pattern. We are not responsible for printing errors or the manner in which individual work varies.  
Please read the instructions carefully before starting this project. If kitting it is recommended a sample is made to confirm accuracy.  
All free projects are intended to remain free and are not for resale.*