

DRINKERS of the WIND Tate



Finished Size: 20 in x 20 in (50.8 cm x 50.8 cm)

Fabric Needed

3 Wishes® Drinkers of the Wind Collection

- 1 yd – Drinkers of the Wind 36 in Panel (22361-PNL-CTN-D)
- 5/8 yd – Trolloping Treasures (22357-MLT-CTN-D)
- 1/3 yd – Windblown (22356-MLT-CTN-D)
- 1/4 yd – Horseshoe Texture (22359-TRQ-CTN-D)
- 1/4 yd – Bountiful Beauty (22356-MLT-CTN-D)

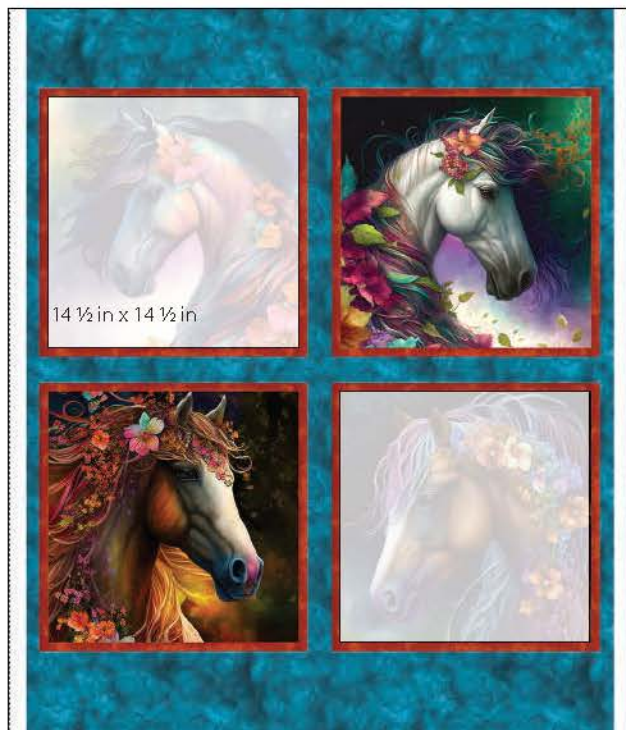
Before You Begin

Read all instructions before beginning project. Do not pre-wash fabrics. Press fabrics with a dry iron on cotton setting before cutting. Use a ¼ in (6.35 mm) seam allowance and sew fabrics with right sides together (RST) unless otherwise noted. Press seams in the direction of the arrows. wof = width of fabric

Note: A printed panel may become slightly skewed during the finishing process. Check if panel is square before cutting by folding the panel so selvages meet. If all edges do not meet, pull firmly from corner to corner until the edges meet. Continue until all corners are square.

Cutting

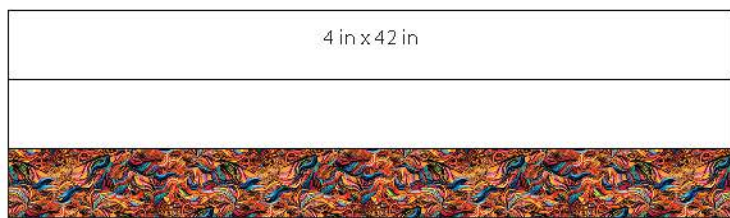
Use a rotary cutter and ruler to cut the size and number of squares and rectangles from each fabric listed below.



Drinkers Of The Wind 36in Panel (22361-PNL-CTN-D)
1 yd x wof (91.44 cm x 106.68 cm)
 Fussy Cut 2 – 14 ½ in x 14 ½ in (36.83 cm x 36.83 cm)



Trolloping Treasures (22357-MLT-CTN-D) – 5/8 yd x wof (57.15 cm x 106.68 cm)
 Cut 2 – 20 ½ in x 20 ½ in (52.07 cm x 52.07 cm)

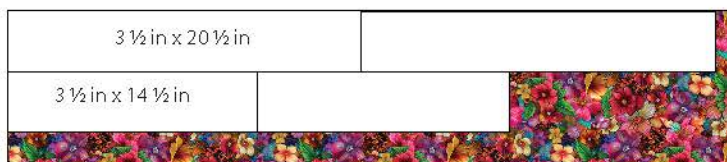


Windblown (22356-MLT-CTN-D) – 1/8 yd x wof (45.72 cm x 106.68 cm)
 Cut 2 – 4 in x 42 in (10.16 cm x 106.68 cm)

www.3wishesfabric.com



Horseshoe Texture (22359-TRQ-CTN-D) – 1/4 yd x wof (22.86 cm x 106.68 cm)
 Cut 2 – 3 ½ in x 20 ½ in (8.89 cm x 52.07 cm)
 Cut 2 – 3 ½ in x 14 ½ in (8.89 cm x 36.83 cm)



Bountiful Beauty (22360-MLT-CTN-D) – 1/4 yd x wof (22.86 cm x 106.68 cm)
 Cut 2 – 3 ½ in x 20 ½ in (8.89 cm x 52.07 cm)
 Cut 2 – 3 ½ in x 14 ½ in (8.89 cm x 36.83 cm)



Fusible Fleece – 3/8 yd x wof (57.15 cm x 106.68 cm)
 Cut 2 – 20 ½ in x 20 ½ in (52.07 cm x 52.07 cm)

Sewing

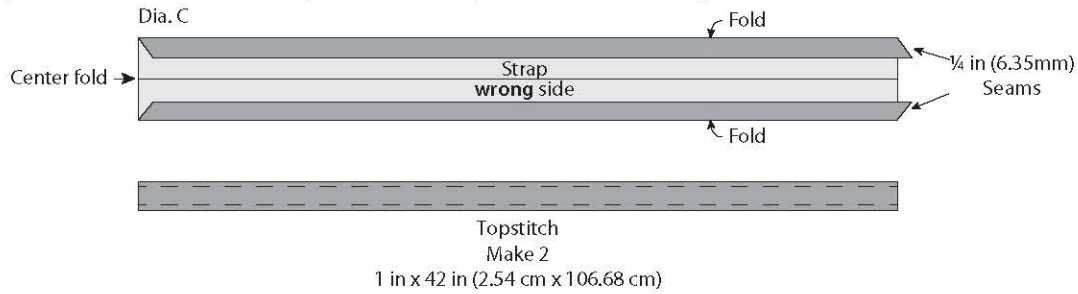
1. Refer to Diagram A to sew the Horseshoe Texture strips 3 ½ in x 14 ½ in (8.89 cm x 36.83 cm) RST to each side of the Drinkers of the Wind panel 14 ½ in x 14 ½ in (36.83 cm x 36.83 cm). Sew the Horseshoe Texture strips 3 ½ in x 20 ½ in (8.89 cm x 52.07 cm) RST to the top and bottom of the Drinkers of the Wind Panel to make the Bag Front. Trim to measure 20 ½ in x 20 ½ in (52.07 cm x 52.07 cm) after borders are added.



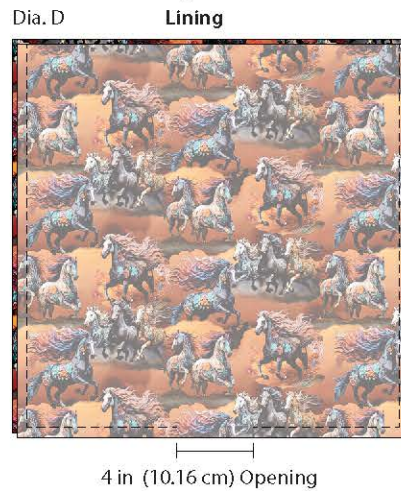
2. Refer to Diagram B to sew the Bountiful Beauty strips 3 ½ in x 14 ½ in (8.89 cm x 36.83 cm) RST to each side of the Drinkers of the Wind panel 14 ½ in x 14 ½ in (36.83 cm x 36.83 cm). Sew the Bountiful Beauty strips 3 ½ in x 20 ½ in (8.89 cm x 52.07 cm) RST to the top and bottom of the Drinkers of the Wind Panel to make the Bag Back. Trim to measure 20 ½ in x 20 ½ in (52.07 cm x 52.07 cm) after borders are added.



3. To make the ties, fold one Windblown strip 4 in x 42 in (10.16 cm x 106.68 cm) in half lengthwise and press. Refer to Diagram C to open the folded fabric and fold each long edge to the creased centerline and press. Fold the pressed fabric in half again and press to make one 1 in x 42 in (2.54 cm x 106.68 cm) Plumes strip. Top stitch down both long sides $\frac{1}{8}$ in (3.18 mm) from the edge to make one strap. Repeat to make a second strap. Trim the straps to the desired length.



4. For the Lining, follow the manufacturer's instructions to fuse the fleece to the **wrong** side of the Trolloping Treasures rectangles 20 $\frac{1}{2}$ in x 20 $\frac{1}{2}$ in (52.07 cm x 52.07 cm). Refer to Diagram D to place two Trolloping Treasures rectangles 20 $\frac{1}{2}$ in x 20 $\frac{1}{2}$ in (52.07 cm x 52.07 cm) RST. Sew the sides and bottom leaving a 4 in (10.16 cm) opening for turning.



5. Refer to Diagram E to pin strap to the Bag Back 3 in (7.62 cm) from each corner. Repeat to add the second strap and the Bag Front.



6. Refer to Diagram F and place the bag back and bag front RST, with the straps sandwiched between the layers. Sew down each side and across the bottom to make the outer bag. Turn the outer bag right side out.



7. Refer to Diagram H to slide the outer bag/straps into the lining, RST. Align the raw edges at the top of the two pieces and pin. Sew around the top raw edges of the lining and outer bag. Add some reinforcement stitches at the straps.



8. Refer to Diagram H to turn the bag right side out through the opening in the lining. Top-stitch the opening in the lining closed and push the lining into the bag.

Dia. H



9. Press the bag and lining together to complete as shown in Diagram I.

Dia. I



Finished Care Instructions

Machine wash in cold water; gentle cycle. Do not bleach. **Tip:** Before drying, check for fabric dyes that may have run. If fabric dyes run, rewash and rinse using a color catcher to absorb loose dye. Lay flat to dry or tumble dry low.