

HERE COMES SANTA Pillows

BACK
FRONT



Featuring the
Here Comes Santa Collection
by The MacNeil Studio
Shipping to stores June 2024



Finished Size: 21 ½ in x 25 in (54.61 cm x 63.5 cm)
Makes 4

Fabric Needed

3 Wishes® Here Comes Santa Collection

- 1 panel – Here Comes Santa Panel (22240-PNL-CTN-D)
- 2 5/8 yds – Flying Sleigh (22236-BLU-CTN-D)
- 7/8 yd – Frosty Friends (22237-MLT-CTN-D)

Additional Supplies Needed:

- 2 Large bags Polyester fiberfill (32 oz)
- Coordinating thread
- Basic sewing supplies

Before You Begin

Read all instructions before beginning project. Do not pre-wash fabrics. Press fabrics with a dry iron on cotton setting before cutting. Use a ¼ in (6.35 mm) seam allowance and sew fabrics with right sides together (RST) unless otherwise noted. Press seams in the direction of the arrows. wof = width of fabric.

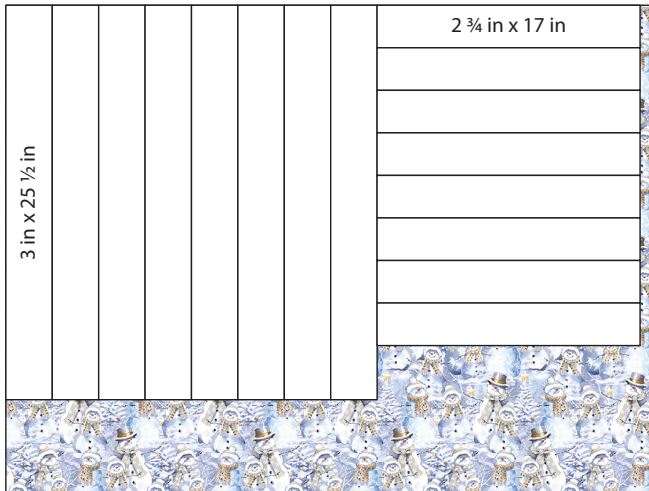
Note: A printed panel may become slightly skewed during the finishing process. Check if panel is square before cutting by folding the panel so selvages meet. If all edges do not meet, pull firmly from corner to corner until the edges meet. Continue until all corners are square.

Cutting

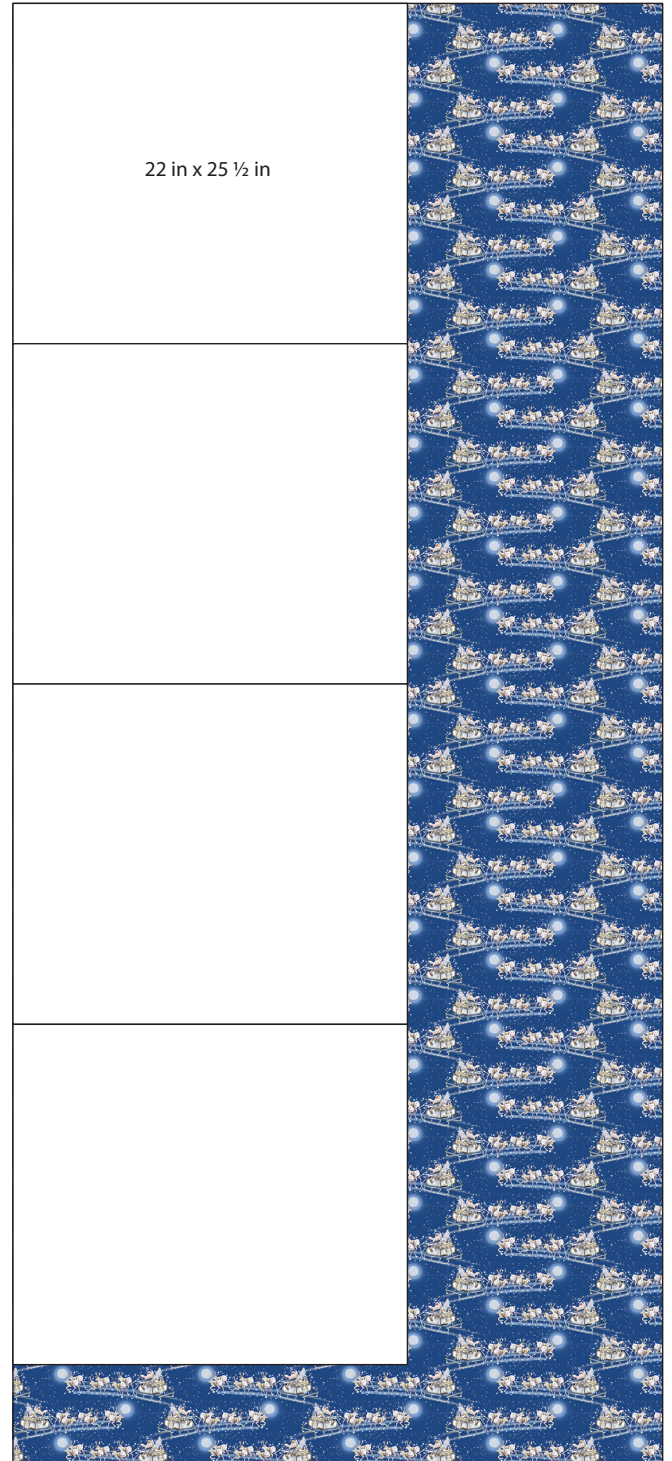
Use a rotary cutter and ruler to cut the size and number of rectangles from each fabric listed below. **Note:** Place border pieces as shown on directional fabric.



Here Comes Santa Panel (22240-PNL-CTN-D) – 1 yd (91.44 cm x 106.68 cm)
Fussy Cut 4 – 17 in x 21 in (43.18 cm x 53.34 cm)



Frosty Friends (22237-MLT-CTN-D) – 7/8 yd (80.01 cm x 106.68 cm)
Cut 8 – 3 in x 25 ½ in (7.62 cm x 64.77 cm)
Cut 8 – 2 ¾ in x 17 in (6.99 cm x 43.18 cm)



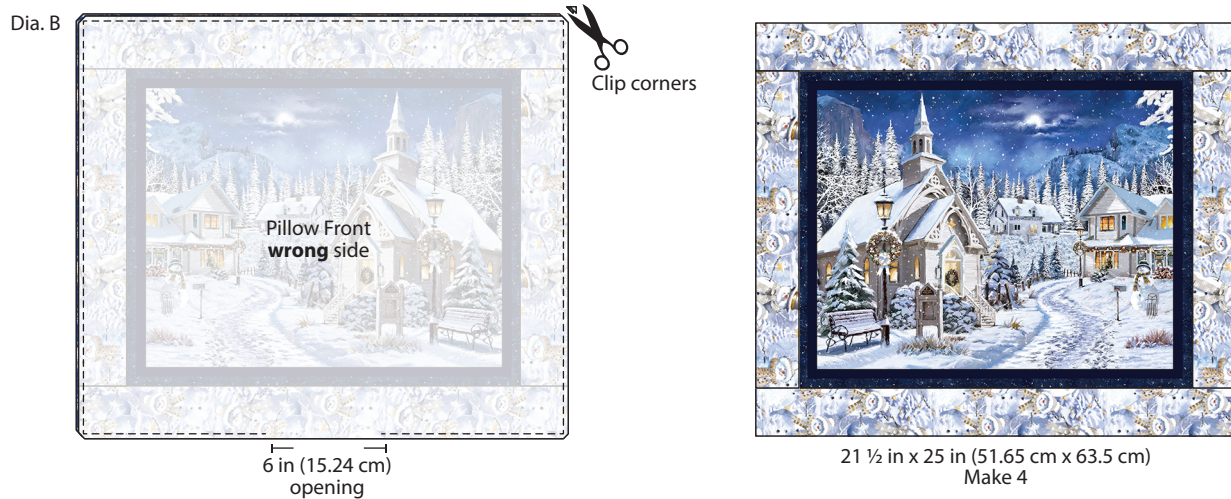
Flying Sleigh (22236-BLU-CTN-D) – 2 5/8 yd (240.03 cm x 106.68 cm)
Cut 4 – 22 in x 25 ½ in (55.88 cm x 64.77 cm)

Sewing

1. Place a Frosty Friends rectangle 2 ¾ in x 17 in (6.99 cm x 43.18 cm) on each side of the Fussy Cut Here Comes Santa Panel rectangle 17 in x 21 in (43.18 cm x 53.34 cm) as shown in Diagram A. Pin RST; sew and press. Place a Frosty Friends rectangle 3 in x 25 ½ in (7.62 cm x 64.77 cm) on the top and bottom. Pin RST; sew and press.



2. Place the Flying Sleigh Pillow Back 22 in x 25 ½ in (55.88 cm x 64.77 cm) and the Pillow Front RST with edges even and pin. Sew around the sides leaving a 6 in (15.24 cm) opening in the bottom as shown in Diagram B. Carefully clip corners and turn right side out. Push out corners and press edges flat. The Pillow should measure 21 ½ in x 25 in (51.65 cm x 63.5 cm).



3. Insert fiberfill through opening as shown in Diagram C. Stuff firmly, but do not overstuff; hand stitch opening closed.



4. Follow Steps 1 through 4 to make the remaining three Pillows.

Dia. D



Finished Care Instructions

Machine wash in cold water; gentle cycle. Do not bleach. Tumble dry low.