

PUMPKIN Please Apron



Featuring the
Pumpkin Please Collection
by Courtney Morgenstern
Shipping to stores June 2024

Finished Size: 40 in x 22 in (101.6 cm x 55.88 cm)

Fabric Needed

3 Wishes® Shining Sea Collection

- 1 ⅛ yd – Picturesque Paisley (22208-WHT-CTN-D)
- ½ yd – Harvest Plaid (22206-MLT-CTN-D)
- ¼ yd – Gourd Gather (22210-ORG-CTN-D)
- ¼ yd – Fall Bikes (22207-TRQ-CTN-D)

Additional Supplies Needed:

- Coordinating thread
- Basic sewing supplies
- Sewing machine
- Iron and pressing surface

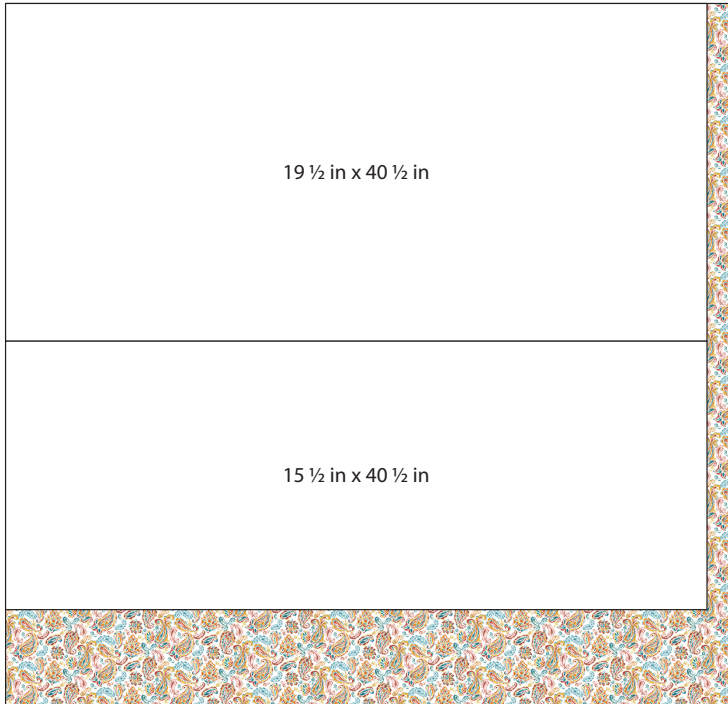
Before You Begin

Read all instructions before beginning project. Do not pre-wash fabrics. Press fabrics with a dry iron on cotton setting before cutting. Use a ¼ in (6.35 mm) seam allowance and sew fabrics with right sides together (RST) unless otherwise noted. Press seams in the direction of the arrows. wof = width of fabric

Note: A printed panel may become slightly skewed during the finishing process. Check if panel is square before cutting by folding the panel so selvages meet. If all edges do not meet, pull firmly from corner to corner until the edges meet. Continue until all corners are square.

Cutting

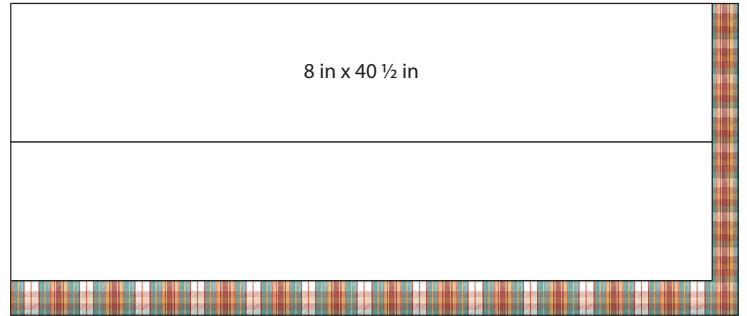
Use a rotary cutter and ruler to cut the size and number of squares and rectangles from each fabric listed below.



Picturesque Paisley (22208-WHT-CTN-D) – 1 ½ yds (102.87 cm x 106.68 cm)

Cut 1 – 19 ½ in x 40 ½ in (48.26 cm x 102.87 cm)

Cut 1 – 15 ½ in x 40 ½ in (39.37 cm x 102.87 cm)



Harvest Plaid (22206-MLT-CTN-D) – ½ yd (45.72 cm x 106.68 cm)

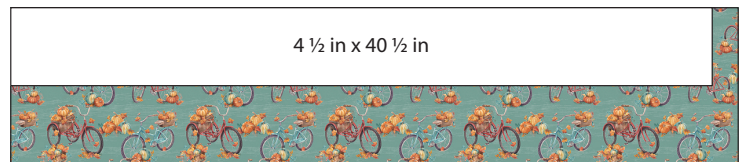
Cut 2 – 8 in x 40 ½ in (20.32 cm x 102.87 cm)



Gourd Gather (22210-ORG-CTN-D) – ¼ yd (22.86 cm x 106.68 cm)

Trace & Cut 4 – From template

Note: Check orientation of template on design before cutting.



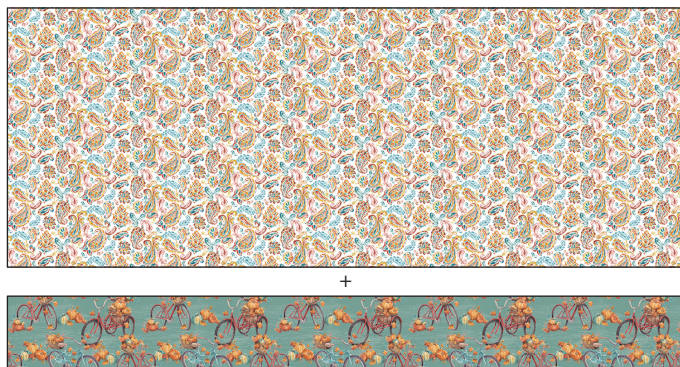
Fall Bikes (22207-TRQ-CTN-D) – ¼ yd (22.86 cm x 106.68 cm)

Cut 1 – 4 ½ in x 40 ½ in (11.43 cm x 102.87 cm)

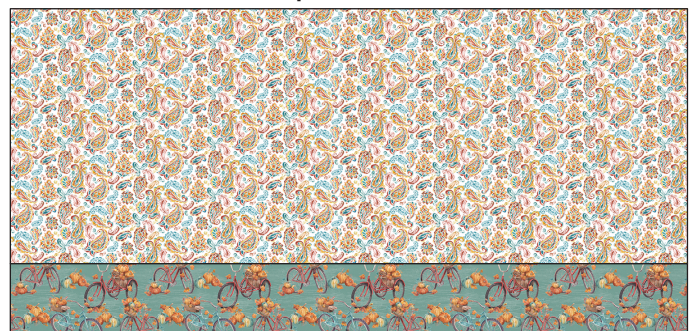
Sewing

1. Refer to Diagram A to place one Picturesque Paisley strip 15 ½ in 40 ½ in (39.37 cm x 102.87 cm) RST with one Fall Bikes strip 4 ½ in x 40 ½ in (11.43 cm x 102.87 cm), aligning long edges. **Note:** Check orientation of design before sewing. Pin and sew together to make the Apron Top measuring 19 ½ in x 40 ½ in (49.53 cm x 102.87 cm).

Dia. A

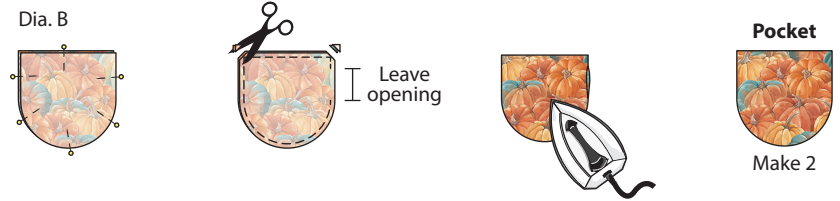


Apron Front

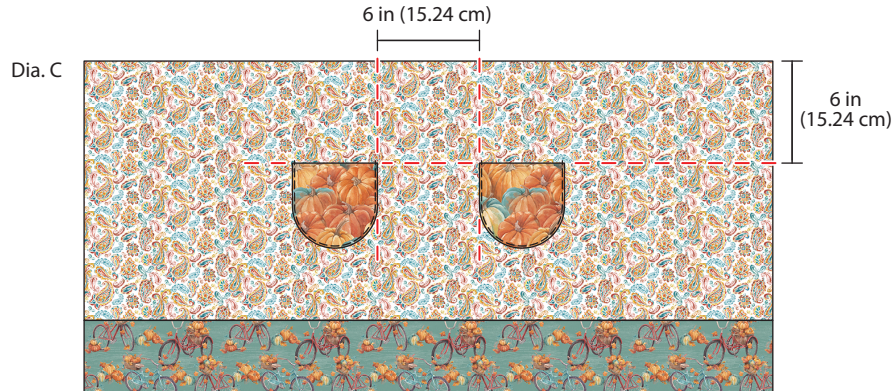


40 ½ in x 19 ½ in (102.87 cm x 49.53 cm)

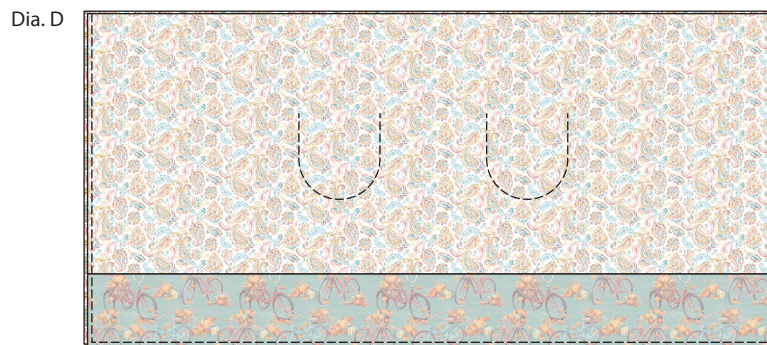
2. Place two Gourd Gather pockets RST, pin and sew. Leave an opening for turning along one side. Turn the pocket right side out and press, tucking in the open seam (Dia. B). Repeat to make a second Pocket.



3. Refer to Diagram C as a guide to place the two Pockets onto the Apron Front, about 6 in (15.24 cm) apart and 6 in (15.24 cm) from the top. To ensure they are centered, fold the Apron Front in half and lightly press to mark the center. Measure 3 in (7.62 cm) on either side of the center and mark with pins. Align each pocket with the pins so there is 6 in (15.24 cm) between; pin in place. **Tip:** Hold the apron up to your body to test if the placement of the pockets is best for you. Move the pockets up and down or side to side as needed for the best fit and re-pin in place. Topstitch each Pocket around the sides and bottom, sew close to the edge.

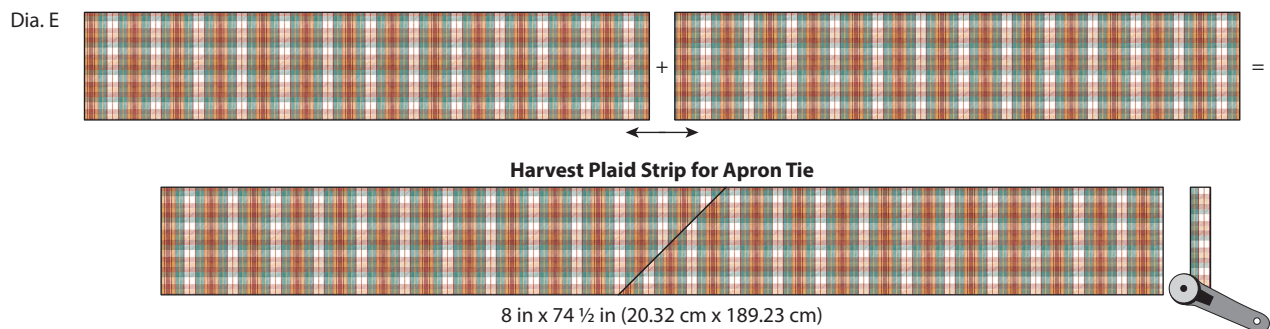


4. Layer the Apron Top and the Picturesque Paisley rectangle 19 1/2 in x 40 1/2 in (48.26 cm x 102.87 cm) RST and pin. Sew together around three edges; the sides and bottom (Dia. D). Turn the unit right side out through the top and press.

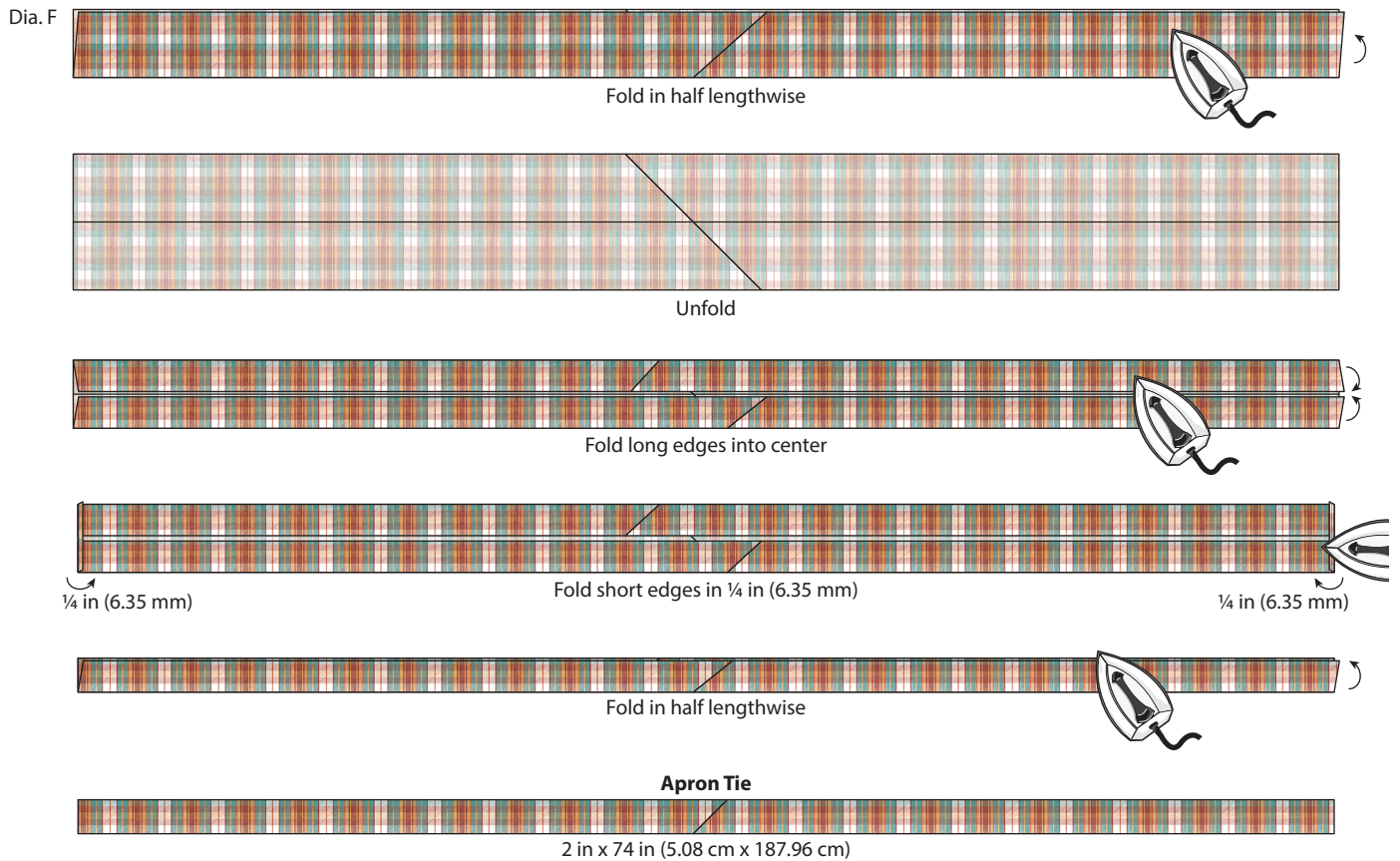


5. Pin the Apron layers together along the top edge and sew a basting stitch across, about 1/2 in (1.27 cm) from the edge. Gather the layers together along the top edge to desired fullness.
Tip: There are many ways to gather fabric. An easy method is to sew two more basting stitches parallel to the first. Leave long thread tails at the beginning and ending of the all three seams. Holding the beginning thread tails, carefully and gently pull the ending thread tails at the other end to gather the fabric.

6. Sew together the two Harvest Plaid strips 8 in (20.32 cm) x wof end to end RST with diagonal seams; trim seam allowance to 1/4 in (6.35 mm). From the sewn strip, cut one Harvest Plaid strip 8 in x 74 1/2 in (20.32 cm x 189.23 cm) for the Apron Tie (Dia. E).



7. Refer to Diagram F to make the Apron Tie. Fold the Harvest Plaid strip 8 in x 74 ½ in (20.32 cm x 189.23 cm) in half lengthwise and press to crease the center. Open the folded fabric. Fold both long edges in to meet the creased centerline and press. Then fold each short end in ¼ in (6.35 mm) and press. Finally, fold the strip in half lengthwise and press to make the Apron Tie which should measure 2 in x 74 in (5.08 cm x 187.96 cm).



8. Measure and mark the center point of the Apron Tie and the top of the Apron Front. Refer to Diagram G to sandwich the Apron Front in the fold of the Apron Tie, aligning the center points. Make sure to align the gathered edge into the crease of the Apron Tie. Pin and topstitch around the Apron Tie, securing the layers together and finishing the Apron.



Finished Care Instructions

Machine wash in cold water; gentle cycle. Do not bleach. **Tip:** Before drying, check for fabric dyes that may have run. If fabric dyes run, rewash and rinse using a color catcher to absorb loose dye. Lay flat to dry or tumble dry low.

Pocket Template (100% Scale)

Trace 4 copies on Gourd Gather fabric.

Scale:
1 square =
1" x 1"

