

Shining SEA Wall Hanging



Featuring the
Shining Sea Collection
by Connie Haley
Shipping to stores January 2024

Finished Size: 49 in x 59 ¼ in (1124.46 cm x 150.5 cm)

Fabric Needed

3 Wishes® Shining Sea Collection

- 1 yd – Shining Sea Panel (21694-PNL-CTN-D)
- 1 yd – Allover Sea Life (21689-WHT-CTN-D)
- 1 yd – Octopus Texture (21690-MLT-CTN-D) for Piecing and Binding
- ⅝ yd – Fishes Galore (21687-MLT-CTN-D)
- 2 ⅔ yd – Tonal Bubbles (21688-TRQ--CTN-D) for Backing

Additional Supplies Needed:

- 57 in x 68 in (144.78 cm x 172.72 cm) Cotton batting
- Piecing and sewing thread
- Quilting and sewing supplies
- Even-feed foot (optional for quilting)

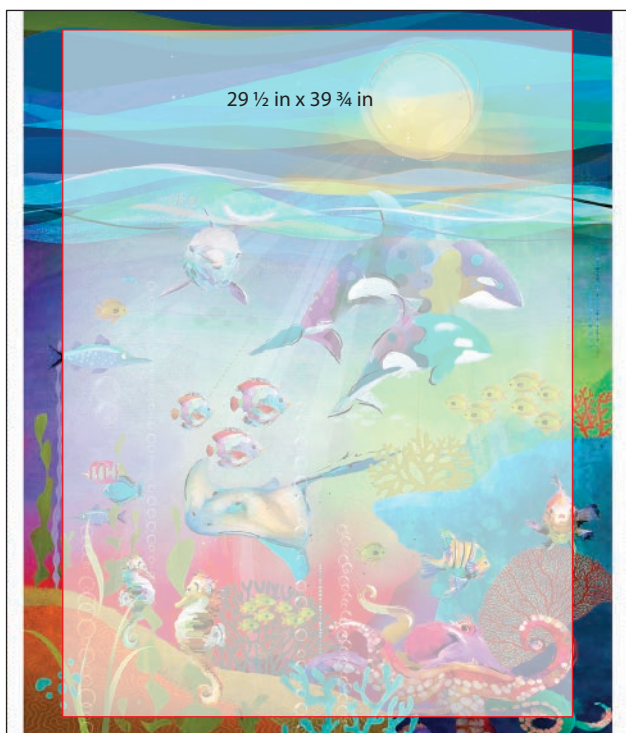
Before You Begin

Read all instructions before beginning project. Do not pre-wash fabrics. Press fabrics with a dry iron on cotton setting before cutting. Use a ¼ in (6.35 mm) seam allowance and sew fabrics with right sides together (RST) unless otherwise noted. Press seams in the direction of the arrows. wof = width of fabric

Note: A printed panel may become slightly skewed during the finishing process. Check if panel is square before cutting by folding the panel so selvages meet. If all edges do not meet, pull firmly from corner to corner until the edges meet. Continue until all corners are square.

Cutting

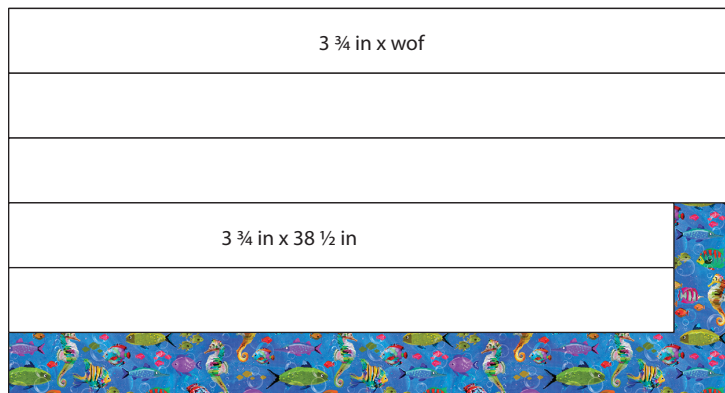
Use a rotary cutter and ruler to cut the size and number of squares and rectangles from each fabric listed below.



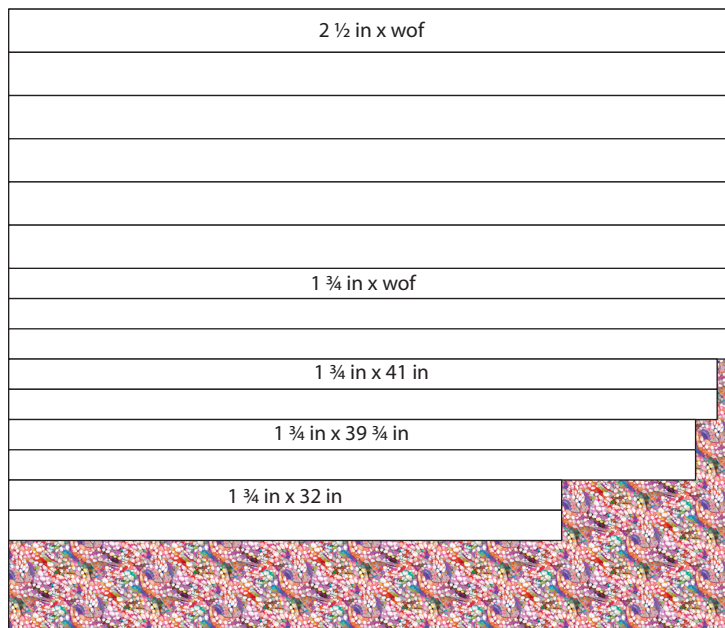
Shining Sea Panel (21694-PNL-CTN-D) – 1 yd (91.44 cm x 106.68 cm)
Fussy Cut 1 – 29 ½ in x 39 ¾ in (74.93 cm x 100.97 cm)



Allover Sea Life (21689-WHT-CTN-D) – 1 yd (91.44 cm x 106.68 cm)
Cut 6 – 4 ½ in x wof (11.43 cm x 106.68 cm)



Fishes Galore (21690-MLT-CTN-D) – 5/8 yd (57.15 cm x 106.68 cm)
Cut 3 – 3 ¾ in x wof (9.53 cm x 106.68 cm)
Cut 2 – 3 ¾ in x 38 ½ in (9.53 cm x 97.79 cm)



Octopus Texture (21687-MLT-CTN-D) – 1 yd (91.44 cm x 106.68 cm)
Cut 6 – 2 ½ in x wof (6.35 cm x 106.68 cm) for Binding
Cut 3 – 1 ¾ in x wof (4.45 cm x 106.68 cm)
Cut 2 – 1 ¾ in x 41 in (4.45 cm x 104.14 cm)
Cut 2 – 1 ¾ in x 39 ¾ in (4.45 cm x 97.79 cm)
Cut 2 – 1 ¾ in x 32 in (4.45 cm x 81.28 cm)

Sewing

1. Refer to Diagram A to sew one Octopus Texture strip $1\frac{3}{4}$ in x $39\frac{3}{4}$ in (4.45 cm x 104.14 cm) RST to each side of the Shining Sea Panel $29\frac{1}{2}$ in x $39\frac{3}{4}$ in (74.93 cm x 100.97 cm). Sew one Octopus Texture strip $1\frac{3}{4}$ in x 32 in (4.45 cm x 81.28 cm) RST to the top and bottom of the Shining Sea Panel to make Unit 1 which should measure 32 in x $42\frac{1}{4}$ in (81.28 cm x 107.95 cm); press.



2. Remove selvages from three Fishes Galore strips $3\frac{3}{4}$ in x wof (9.53 cm x 106.68 cm) and sew end to end to make one long strip. From the sewn strip, cut two strips $3\frac{3}{4}$ in x $42\frac{1}{4}$ in (9.53 cm x 107.32 cm). Refer to Diagram B to sew one Fishes Galore strip $3\frac{3}{4}$ in x $42\frac{1}{4}$ in (9.53 cm x 107.32 cm) RST to each side of Unit 1. **Note:** Check orientation of the design. Sew one Fishes Galore strip $3\frac{3}{4}$ in x 32 in (9.53 cm x 81.28 cm) RST to the top and bottom of Unit 1 to make Unit 2 which should measure 39 in x $48\frac{3}{4}$ in (99.06 cm x 123.83 cm); press.

Dia. B

Unit 2

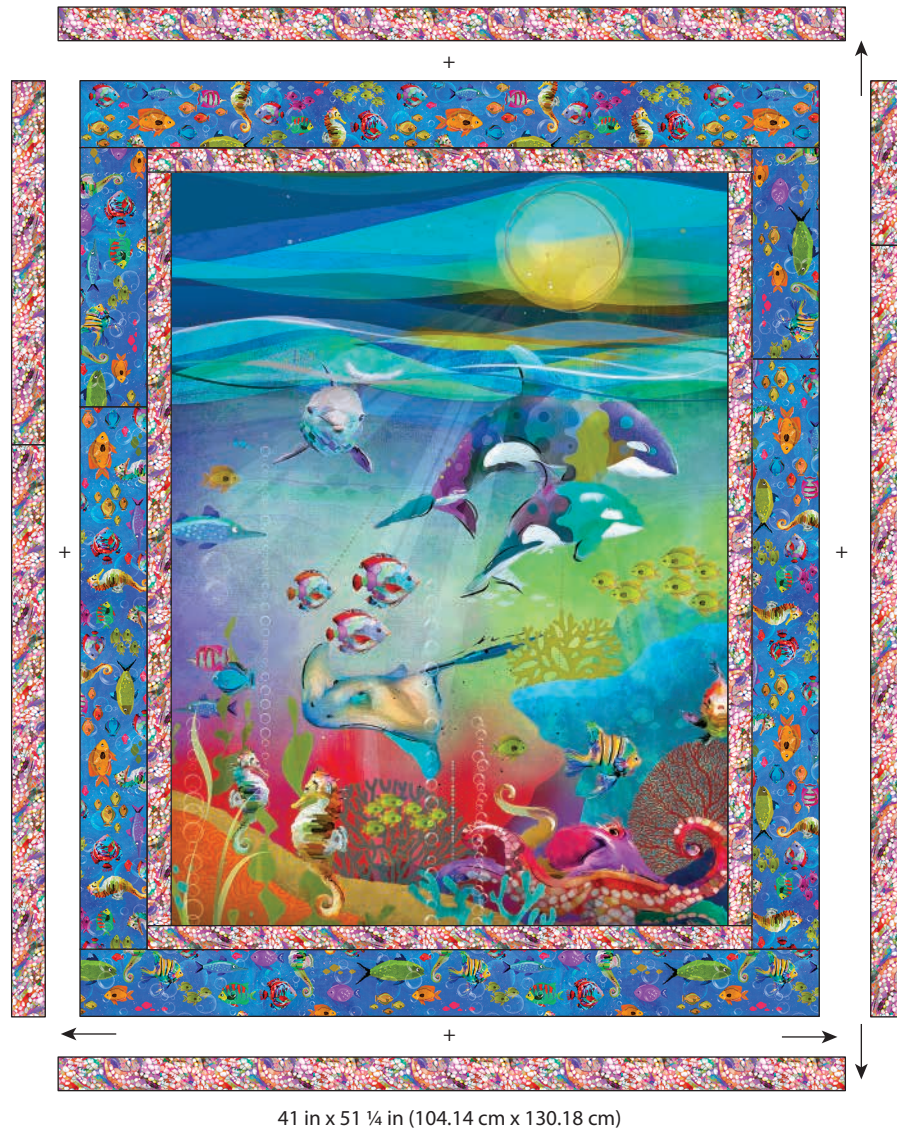


39 in x $48\frac{3}{4}$ in (99.06 cm x 123.83 cm)

3. Remove selvages from three Octopus Texture strips $1\frac{3}{4}$ in x wof (4.45 cm x 106.68 cm) and sew end to end to make one long strip. From the sewn strip, cut two strips $1\frac{3}{4}$ in x $48\frac{3}{4}$ in (4.45 cm x 123.83 cm). Refer to Diagram C to sew one Octopus Texture strip $1\frac{3}{4}$ in x $48\frac{3}{4}$ in (4.45 cm x 123.83 cm) RST to each side of Unit 2. Sew one Octopus Texture strip $1\frac{3}{4}$ in x 41 in (4.45 cm x 104.14 cm) RST to the top and bottom of Unit 2 to make Unit 3 which should measure 41 in x $51\frac{1}{4}$ in (104.14 cm x 130.18 cm); press.

Dia. C

Unit 3



4. Remove selvages from six Allover Sea Life strips 4 ½ in x wof (11.43 cm x 106.68 cm) and sew end to end to make one long strip. From the sewn strip, cut two strips 4 ½ in x 41 in (11.43 cm x 104.14 cm) and two strips 4 ½ in x 59 ¼ in (11.43 cm x 150.5 cm). Refer to Diagram D to sew one Allover Sea Life strip 4 ½ in x 41 in (11.43 cm x 104.14 cm) RST to each side of Unit 3. **Note:** Check orientation of the design. Sew one Allover Sea Life strip 4 ½ in x 59 ¼ in (11.43 cm x 150.5 cm) RST to the top and bottom of Unit 3 to make the Wall Hanging Top which should measure 49 in x 59 ¼ in (124.46 cm x 150.5 cm); press.

Dia. D

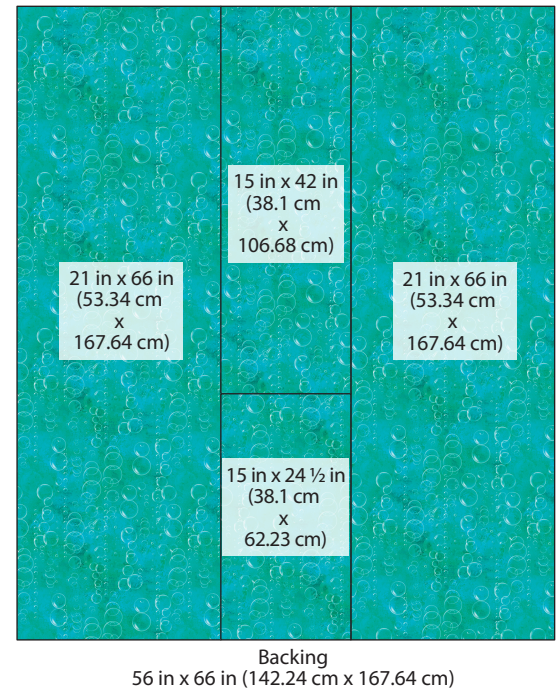
Wall Hanging Top



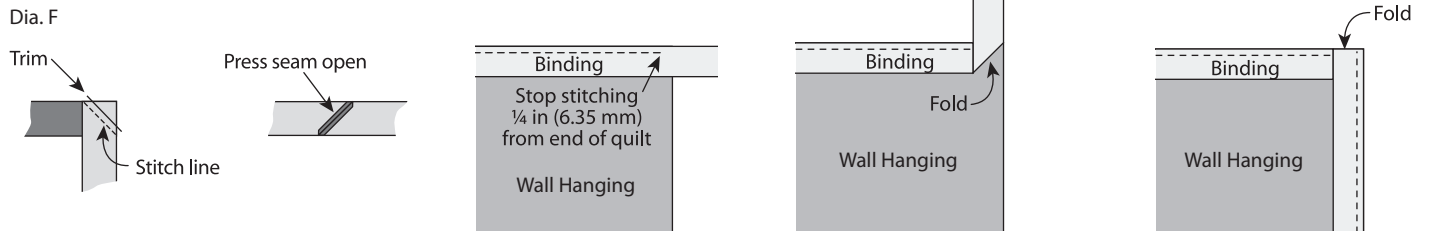
Finishing

10. To make the Tonal Bubbles Backing, remove the selvages and cut two pieces 21 in x 66 in (53.34 cm x 167.64 cm), one piece 15 in x 42 in (38.1 cm x 106.68 cm), and one 15 in x 24 ½ in (38.1 cm x 62.23 cm). Pin and sew the two smaller pieces RST on the short edges, then sew the two 21 in x 66 in (53.34 cm x 167.64 cm) pieces on both sides, along the long edges to make a Backing 56 in x 66 in (142.24 cm x 167.64 cm) as shown in Diagram. E.

Dia. E



13. Press finished Wall Hanging Top and Backing fabric. Tape the Backing **wrong** side up on a firm surface. Layer Batting and Wall Hanging Top (right side up). Baste the layers together with safety pins. Quilt as desired.
14. Once the quilting is complete, square up corners and edges, trimming excess Backing and Batting even with the Wall Hanging Top.
15. To make the Octopus Texture Binding, remove the selvages and sew the short ends of the six 2 ½ in x 42 in (6.35 cm x 106.68 cm) strips RST end to end at a 45° angle to make one continuous strip; press seams open. Press one short end ¼ in (6.35 mm) to the **wrong** side. Fold in half lengthwise with **wrong** sides together; press. Leaving a 2 in (5.08 cm) tail on the folded end, place cut edges of folded Binding even with the edge of the Quilt and sew, mitering the corners (Dia. F). Overlap ends, trim any excess and finish sewing the Binding. Fold the Binding over to the back and hand stitch.



Finished Care Instructions

Machine wash in cold water; gentle cycle. Do not bleach. **Tip:** Before drying, check for fabric dyes that may have run. If fabric dyes run, rewash and rinse using a color catcher to absorb loose dye. Lay flat to dry or tumble dry low.