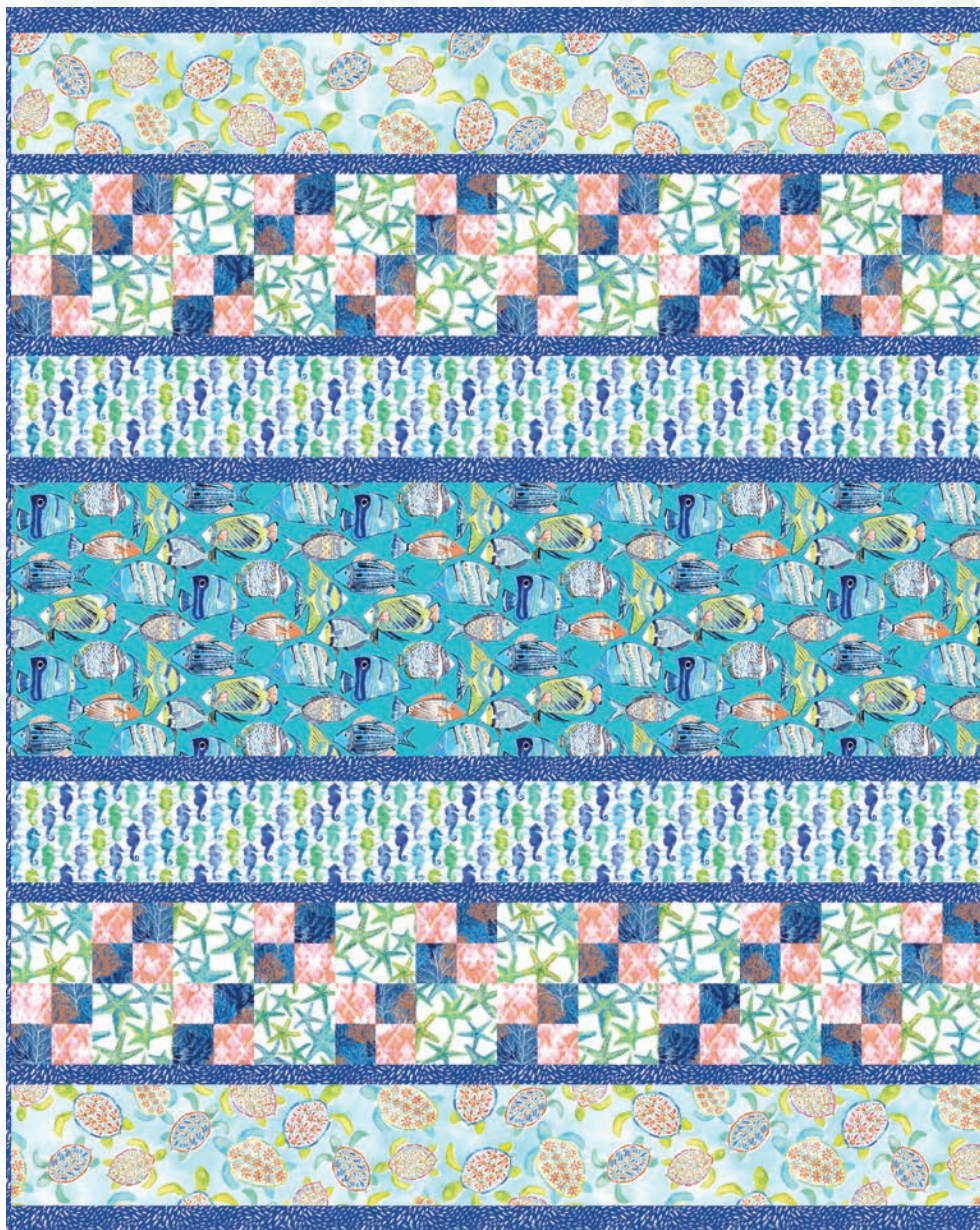


# Sandsational

By Michael Moon

••••• A Free Project Sheet •••••  
••••• NOT FOR RESALE •••••



Quilt Design by Matthew Pridemore

Skill Level: Advanced Beginner



Beach Time  
Finished Quilt Size: 48" x 60"  
(121.92 cm x 152.40 cm)  
[www.3wishesfabric.com](http://www.3wishesfabric.com)

Please check our website for pattern updates before starting this project.

Any questions? Email us at [help@askaquilter.com](mailto:help@askaquilter.com) or call 888-912-7238

# BEACH TIME

Finished Quilt Size: 48" x 60"  
(121.92 cm x 152.40 cm)

## Fabrics in the Sandsational Collection



Sea Turtle Cove  
22927-AQU-CTN-D



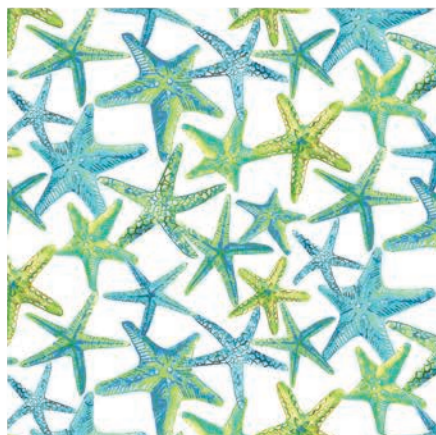
Ikat Orange  
22928-ORG-CTN-D



Jellyfish Swarm  
22929-WHT-CTN-D



Under the Sea  
22930-TRQ-CTN-D



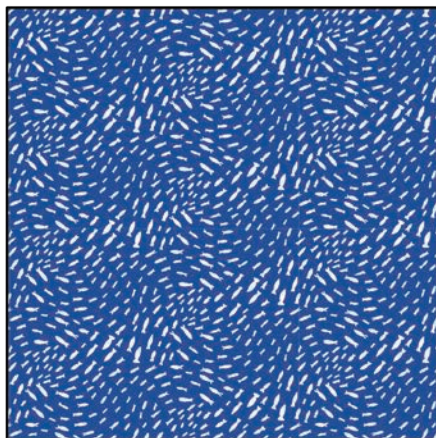
Starfish Toss  
22931-WHT-CTN-D



Coral Reef  
22932-BLU-CTN-D



Ocean Life  
22933-TRQ-CTN-D



Packed Minnows  
22934-NVY-CTN-D



Sea Horsing Around  
22935-WHT-CTN-D

## Materials

1 yard (0.92m)	Packed Minnows (A)* 22934-NVY-CTN-D
2/3 yard (0.61m)	Sea Turtle Cove (B) 22927-AQU-CTN-D
1/2 yard (0.46m)	Starfish Toss (C) 22931-WHT-CTN-D
1/3 yard (0.31m)	Ikat Orange (D) 22928-ORG-CTN-D
1/3 yard (0.31m)	Coral Reef (E) 22932-BLU-CTN-D
5/8 yard (0.58m)	Sea Horsing Around (F) 22935-WHT-CTN-D
7/8 yard (0.81m)	Ocean Life (G) 22933-TRQ-CTN-D
4 yards (3.66m)	Under the Sea (Backing) 22930-TRQ-CTN-D

\*Includes binding

## Cutting Instructions

Please note: All strips are cut across the width of fabric (WOF) from selvage to selvage unless otherwise noted.

### From the Packed Minnows (A), cut:

- (7) 1 1/2" x WOF strips. Sew the strips together end to end with diagonal seams and cut (6) 1 1/2" x 48 1/2" strips.
- (3) 1 3/4" x WOF strips. Sew the strips together end to end with diagonal seams and cut (2) 1 3/4" x 48 1/2" strips.
- (6) 2 1/2" x WOF strips for the binding.

### From the Sea Turtle Cove (B), cut:

- (3) 6 1/2" x WOF strips. Sew the strips together end to end with diagonal seams and cut (2) 6 1/2" x 48 1/2" strips.

### From the Starfish Toss (C), cut:

- (3) 4 1/2" x WOF strips. Sub-cut (24) 4 1/2" squares.

### From the Ikat Orange (D), cut:

- (3) 2 1/2" x WOF strips. Sub-cut (48) 2 1/2" squares.

### From the Coral Reef (E), cut:

- (3) 2 1/2" x WOF strips. Sub-cut (48) 2 1/2" squares.

### From the Sea Horsing Around (F), cut:

- (3) 5 1/2" x WOF strips. Sew the strips together end to end with diagonal seams and cut (2) 5 1/2" x 48 1/2" strips.

### From the Ocean Life (G), cut:

- (2) 14" x WOF strips. Sew the strips together end to end and cut (1) 14" x 48 1/2" strip for Row Five.

### From the Under the Sea (Backing), cut:

- (2) 68" x WOF strips for the backing. Sew the strips together and trim to make the 56" x 68" back.

## Block Assembly

Note: The arrows in figures represent the fabric print direction. Pay attention to the fabric and unit orientations when assembling the various components. Use a 1/4" seam allowance with right sides together (RST) unless otherwise noted.

1. Sew (1) 2 1/2" Fabric D square to the left side of (1) 2 1/2" Fabric E square to make the top row. Sew (1) 2 1/2" Fabric E square to the left side of (1) 2 1/2" Fabric D square to make the bottom row. Sew together the two rows lengthwise to make (1) 4 1/2" Block One square (Fig. 1). Repeat to make (24) Block One squares total.

Block One

make 24

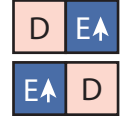
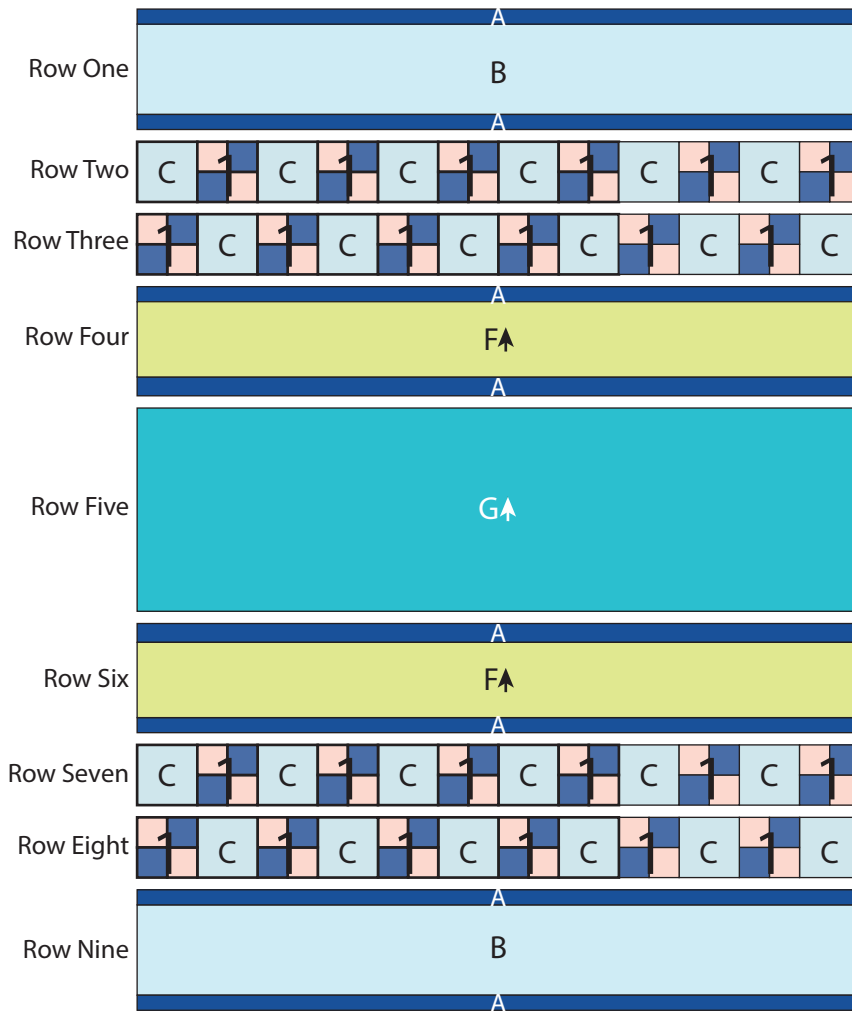


Fig. 1

## Quilt Top Assembly

(Follow the Quilt Layout while assembling the quilt top.)

2. Sew (1) 1 1/2" x 48 1/2" Fabric A strip to the top and bottom of (1) 6 1/2" x 48 1/2" Fabric B strip lengthwise to make Row One. Repeat to make Row Nine.
3. Sew together (6) 4 1/2" Fabric C squares and (6) Block One squares, alternating them from left to right, to make Row Two. Repeat to make Row Seven.
4. Sew together (6) Block One square and (6) 4 1/2" Fabric C squares, alternating them from left to right, to make Row Three. Repeat to make Row Eight.
5. Sew together (1) 1 1/2" x 48 1/2" Fabric A strip, (1) 5 1/2" x 48 1/2" Fabric F strip and (1) 1 3/4" x 48 1/2" Fabric A strip, lengthwise and in that order from top to bottom, to make Row Four.
6. Sew Together (1) 1 3/4" x 48 1/2" Fabric A strip, (1) 5 1/2" x 48 1/2" Fabric F strip and (1) 1 1/2" x 48 1/2" Fabric A strip, lengthwise and in that order from top to bottom, to make Row Six.
7. Sew together the (9) Rows, lengthwise and in numerical order from top to bottom, to make the quilt top.
8. Layer and quilt as desired.
9. Sew the (6) 2 1/2" x WOF Fabric A strips together, end to end with 45-degree seams, to make the binding. Fold this long strip in half lengthwise with wrong sides together and press.
10. Bind as desired.



Quilt Layout

Every effort has been made to ensure that all projects are error free. All the information is presented in good faith, however no warranty can be given nor results guaranteed as we have no control over the execution of instructions. Therefore, we assume no responsibility for the use of this information or damages that may occur as a result. When errors are brought to our attention, we make every effort to correct and post a revision as soon as possible. Please make sure to check [www.3wishesfabric.com](http://www.3wishesfabric.com) for pattern updates prior to starting the project. We also recommend that you test the project prior to cutting for kits. Finally, all free projects are intended to remain free to you and are **not for resale**.