

flower JUNCTION Tote



Featuring the Flower
Junction Collection
by Jennifer Ellory

Shipping to stores January 2022

Finished Size: 14 ½ in x 24 ½ in (36.83 cm x 62.23 cm)

Fabric Needed

3 Wishes Fabric® Seas the Day Collection

- 1 ½ yds – 19446-GRN-CTN-D (Tangling Vines)
- ⅝ yd – 19439-MLT-CTN-D (Market Patchwork)
- ⅝ yd – 19445-GRY-CTN-D (Flutter By)
- ½ yd – 19442-BLU-CTN-D (Floral Garden)

Additional Supplies Needed:

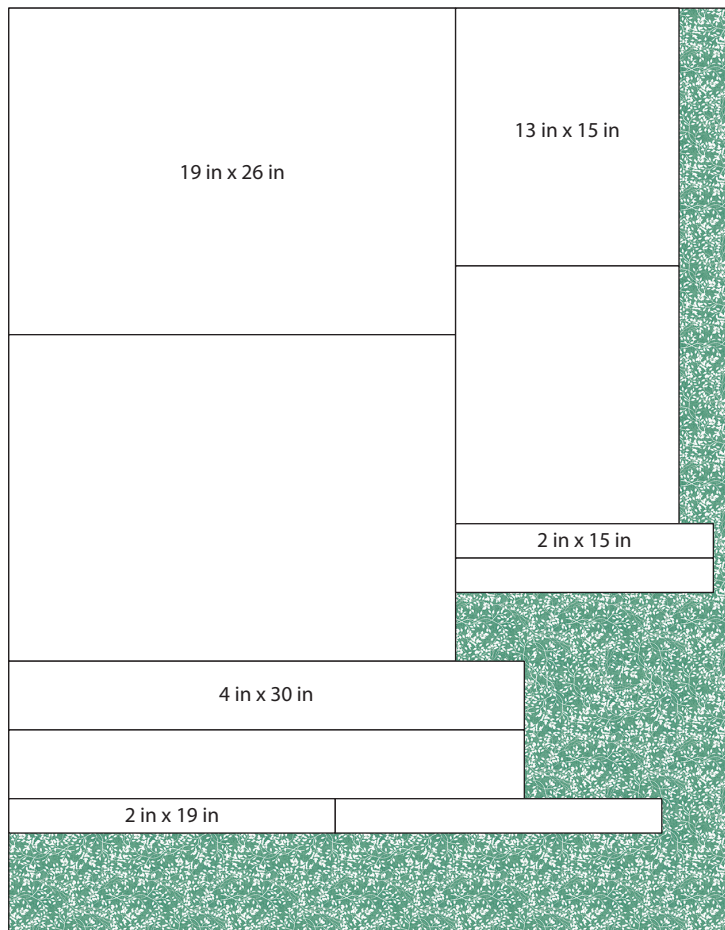
- 2 ½ yds – 20 in (50.8 cm) Wide fusible midweight interfacing (for midweight to heavyweight fabrics)
- Coordinating thread
- Cardstock or cardboard 8 in x 16 ½ in (20.32 cm x 41.91 cm)
- Basic sewing supplies
- Iron and pressing surface

Before You Begin

Read all instructions before beginning project. Do not pre-wash fabrics. Press fabrics with a dry iron on cotton setting before cutting. Sew fabrics with right sides together (RST) unless otherwise noted.

Cutting

Use a rotary cutter and ruler to cut the size and number of squares and rectangles from each fabric listed below.



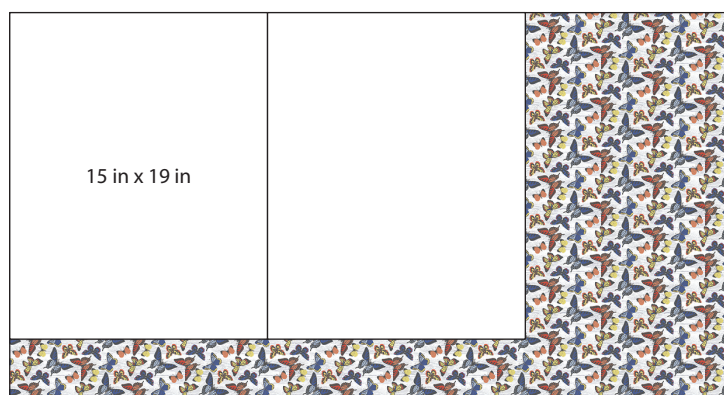
Tangling Vines (19446-GRN-CTN-D) 1 ½ yards (54 in / 137.16 cm x wof)

- Cut 2 - 19 in x 26 in (48.26 cm x 66.04 cm) for Bag Lining
- Cut 2 - 13 in x 15 in (33.02 cm x 38.1 cm) for Pocket Lining
- Cut 2 - 4 in x 30 in (10.16 cm x 76.2 cm) for Handles
- Cut 2 - 2 in x 19 in (5.08 cm x 48.26 cm) for Center Strips
- Cut 2 - 2 in x 15 in (5.08 cm x 38.1 cm) for Pocket Strips



Market Patchwork (19439-MLT-CTN-D) ¾ yard (22 ½ in / 57.15 cm x wof)

- Cut 2 - 12 in x 19 in (30.48 cm x 48.26 cm) for Bag (Left Pieces)



Flutter By (19445-GRY-CTN-D) ¾ yard (22 ½ in / 57.15 cm x wof)

- Cut 2 - 15 in x 19 in (38.1 cm x 48.26 cm) for Bag (Right Pieces)



Floral Garden (19442-BLU-CTN-D) ¾ yard (22 ½ in / 57.15 cm x wof)

- Cut 2 - 13 in x 15 in (33.02 cm x 38.1 cm) for Pocket Fronts

12 in x 19 in	15 in x 19 in	13 in x 15 in	2 in x 30 in

Fusible Midweight Interfacing 20 in x 2 ½ yards (50.8 cm x 2.29 m)

Cut 2 - 12 in x 19 in (30.48 cm x 48.26 cm) - Bag (Left Pieces)

Cut 2 - 15 in x 19 in (38.1 cm x 48.26 cm) - Bag (Right Pieces)

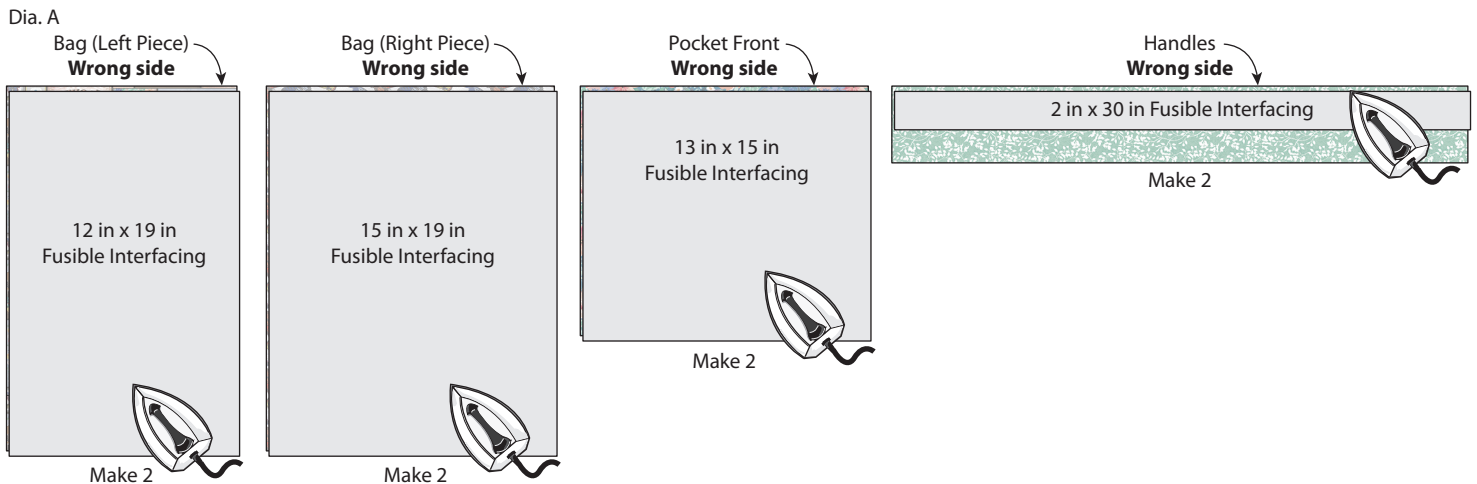
Cut 2 - 13 in x 15 in (33.02 cm x 38.1 cm) - Pocket Fronts

Cut 2 - 2 in x 30 in (5.08 cm x 76.2 cm) - Handles

Sewing

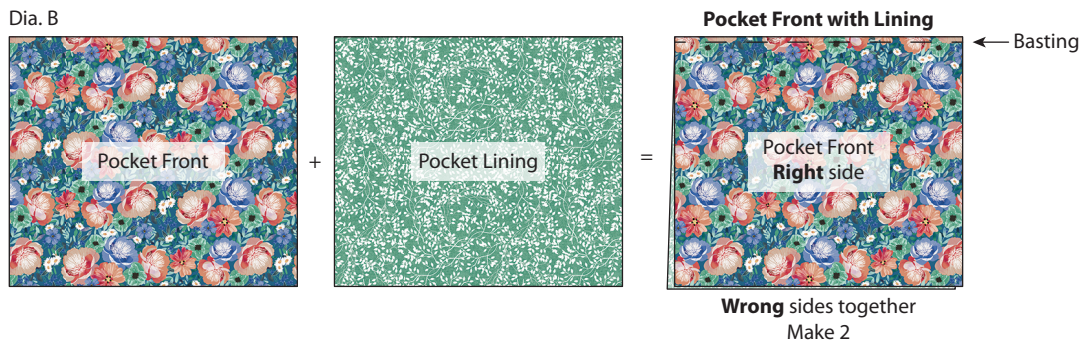
- Following the manufacturer's instructions, apply interfacing to the **wrong** side of pieces listed as shown in Diagram A:
 Fuse Interfacing 12 in x 19 in (30.48 cm x 48.26 cm) to **wrong** side of Market Patchwork Bag (Left Pieces) 12 in x 19 in (30.48 cm x 48.26 cm).
 Fuse Interfacing 15 in x 19 in (38.1 cm x 48.26 cm) to **wrong** side of Flutter By Bag (Right Pieces) 15 in x 19 in (38.1 cm x 48.26 cm).
 Fuse Interfacing 13 in x 15 in (33.02 cm x 38.1 cm) to **wrong** side of Floral Garden Pocket Fronts 13 in x 15 in (33.02 cm x 38.1 cm).
 Fuse Interfacing 2 in x 30 in (5.08 cm x 76.2 cm) to **wrong** side of Tangling Vines Handles 4 in x 30 in (10.16 cm x 76.2 cm).

Note: Interfacing is applied to one long edge of each handle. Make 2 of each.

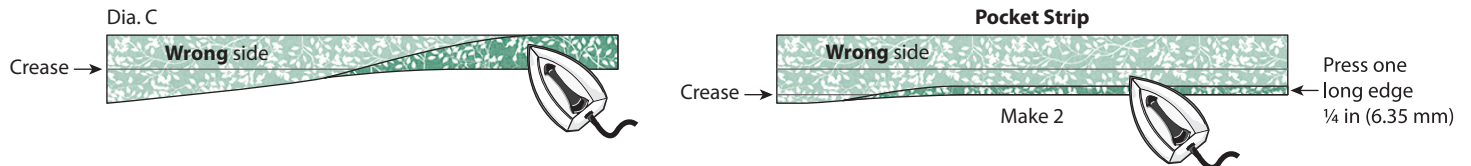


POCKETS

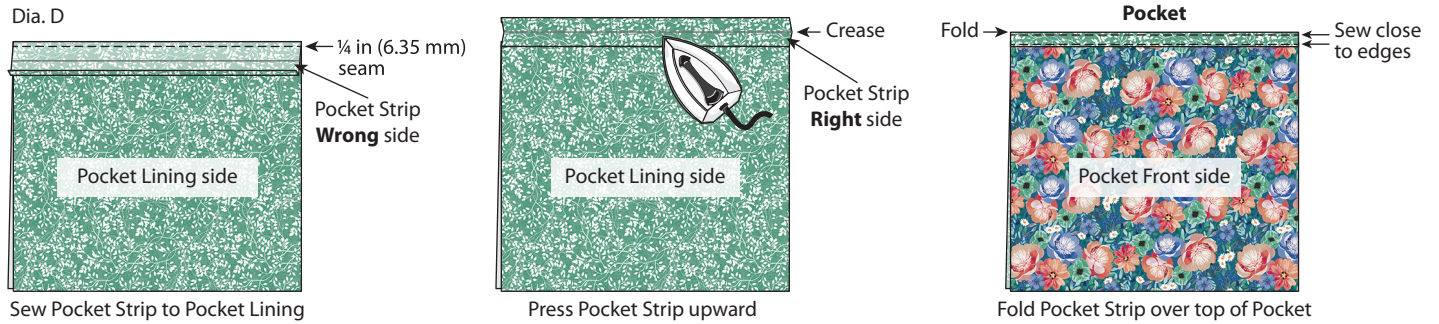
- Refer to Diagram B to pin a Flower Garden Pocket 13 in x 15 in (33.02 cm x 38.1 cm) and a Tangling Vines Pocket Lining 13 in x 15 in (33.02 cm x 38.1 cm) with **wrong** sides together and edges even, baste along the top edge.



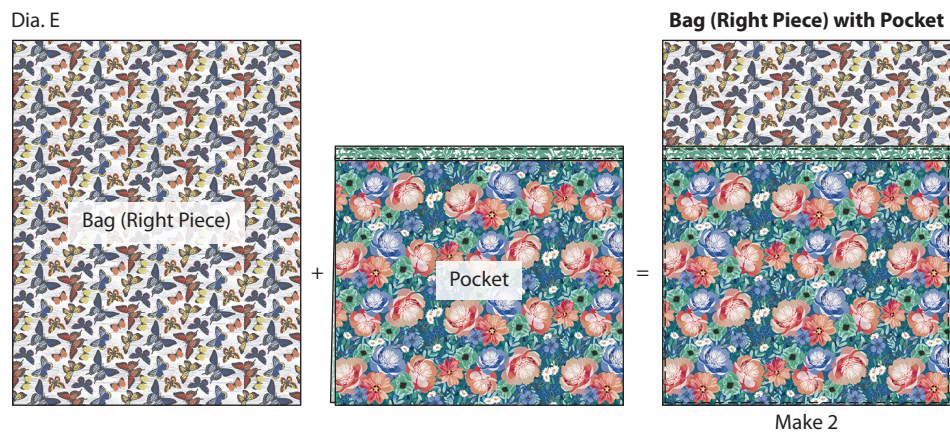
3. Fold a Tangling Vines Pocket Strip 2 in x 15 in (5.08 cm x 38.1 cm) in half with long edges even and press to crease the center. Open and fold one long edge $\frac{1}{4}$ in (6.35 mm) to the **wrong** side; press (Dia. C).



4. Pin the cut edge of the Strip to the Pocket Lining at the top edge; sew using a $\frac{1}{4}$ in (6.35 mm) seam. Press the Pocket Strip upward and at the crease, fold over to the Pocket Front; press. Topstitch along the edges as shown (Dia. D). Repeat to make a second Pocket.



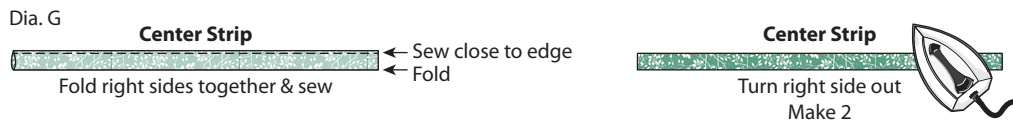
5. Pin a Pocket on top of a Flutter By Bag (Right Piece) 13 in x 15 in (33.02 cm x 38.1 cm) with the bottom and side edges matching; sew close to the side and bottom edges to attach (Dia. E). Repeat to attach the other Pocket to the remaining Flutter By Bag (Right Piece).



6. Pin a Market Patchwork Bag (Left Piece) RST with a Bag (Right Piece) with Pocket and sew using a $\frac{1}{4}$ in (6.35 mm) seam allowance; press (Dia. F). Repeat to sew the remaining Bag (Left Piece) and Bag (Right Piece) with Pocket together.



7. Fold a Tangling Vines Center Strip 2 in x 19 in (5.08 cm x 48.26 cm) in half RST so long edges meet and sew using a $\frac{1}{4}$ in (6.35 mm) seam allowance; turn the Center Strip right side out and press (Dia. G). Repeat to make a second Center Strip.



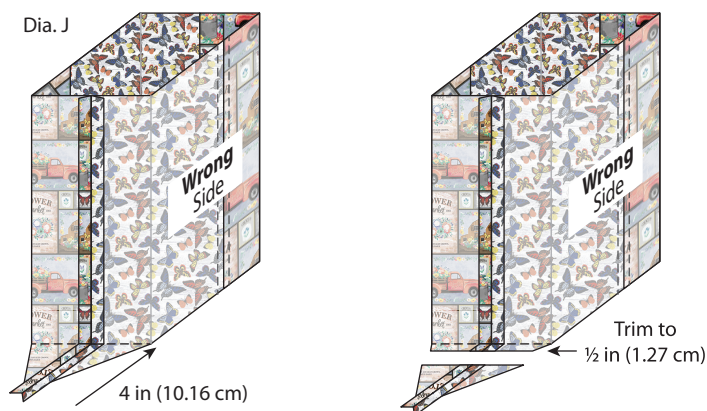
8. Center the Tangling Vines Center Strip over the Bag center seam and sew along each side to attach (Dia. H). Repeat for the second Center Strip and Bag.



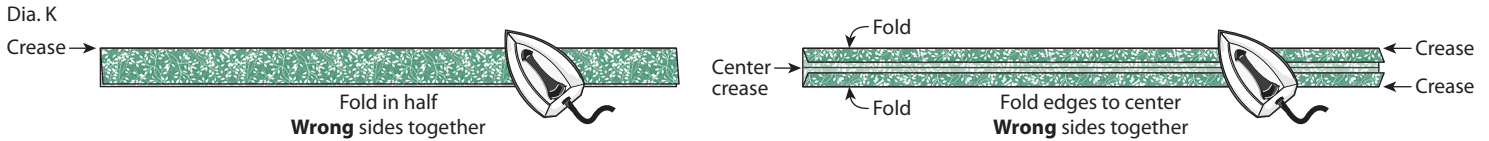
9. Pin the Bag pieces RST with edges even and sew around the side and bottom edges using a $\frac{1}{2}$ in (1.27 cm) seam allowance; press seams open (Dia. I).



10. To box the bottom, bring the center bottom seam to a side seam RST. Mark 4 in (10.16 cm) from the point and sew from edge to edge. Trim the point to a $\frac{1}{2}$ in (1.27 cm) seam (Dia. J). Repeat for the other side. Turn Bag right side out.



11. To make a Handle, fold a Tangling Vines Handle 4 in x 30 in (10.16 cm x 76.2 cm) in half so long edges meet and press to crease. Refer to Diagram K to open the strip and fold each long edge to the center crease; press. Fold the strip in half again so folded edges meet; press. Topstitch close to the long edges. Repeat to make the other Tangling Vines Handle.



12. To attach a Handle to the right side of the Bag on the top edge, measure 5 in (12.7 cm) from the side seam and pin the cut edge of the Handle with edges even; sew $\frac{1}{8}$ in (3.18 cm) in from the edge to attach. Measure 5 in (12.7 cm) from the other side seam and pin the other end of the Handle; sew $\frac{1}{8}$ in (3.18 cm) from the edge (Dia. L). **Note:** Check that Handle is not twisted before sewing. Repeat to attach the other Handle on the other Bag piece.



13. Follow Steps 9 and 10 to sew the Lining and box the bottom, except leave a 5 in (12.7 cm) opening in one side seam for turning.
Note: Leave the Lining with the **wrong** side out.

Finishing

14. Insert the Bag into the Lining RST with edges even and side seams matching. Sew around the top edge using a $\frac{1}{2}$ in (1.27 cm) seam.
15. Turn the Bag right side out through the opening in the Lining; press and sew the opening closed.
16. Press the top edge and topstitch $\frac{1}{4}$ in (6.35 mm) from the edge. Insert the cardboard 8 in x 16 $\frac{1}{2}$ in (20.32 cm x 41.91 cm) into the bottom of the Bag. **Optional:** Remaining fabric can be used to cover the cardboard insert.

Finished Care Instructions

Machine wash in cold water; gentle cycle. Do not bleach. Hang to dry.