



# Nature Walk Pillows

by Abraham Hunter



Featuring the  
Nature Walk Collection  
by Abraham Hunter  
Shipping to stores July 2022

Pillow One



Pillow Two



Pillow Three

Finished Size: 24 in x 24 in (60.96 cm x 60.96 cm)

## Fabric Needed

### 3 Wishes® Nature Walk Collection

- ½ yd – Dinnertime Chickadees (19177-BLU-CTN-D)
- ⅞ yd – Rustling Leaves (19174-MLT-CTN-D)
- ⅞ yd – Into the Wild (19176-BLU-CTN-D)
- ⅝ yd – Falltime Playground (19175-MLT-CTN-D)
- ⅝ yd – Autumn Glory (19179-MLT-CTN-D)

### Additional Supplies Needed:

- 24 in (60.96 cm) Pillow form for each pillow
- Matching piecing and sewing thread
- Sewing supplies

# Before You Begin

Read all instructions before beginning project. Do not pre-wash fabrics. Press fabrics with a dry iron on cotton setting before cutting. Use a ¼" (6.35mm) seam allowance and sew fabrics with right sides together (RST) unless otherwise noted. Press seams in the direction of the arrows. Label blocks as they are made. wof = width of fabric

## Cutting

Use a rotary cutter and acrylic ruler to cut the number of pieces from each fabric listed below.

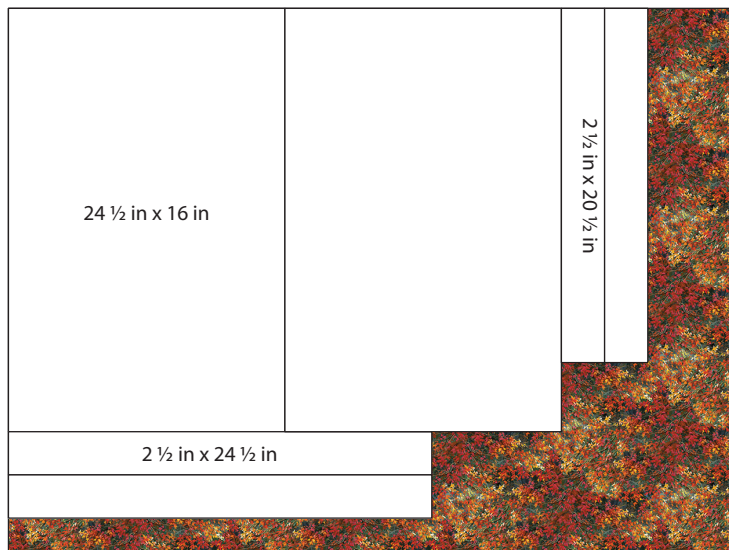


### **Dinnertime Chickadees – 19177-BLU-CTN-D**

**1 ½ yds x wof (137.16 cm x 106.68 cm)**

Cut 1 – 24 ½ in x 24 ½ in (62.23 cm x 62.23 cm)

Cut 2 – 24 ½ in x 16 in (62.23 cm x 40.64 cm)

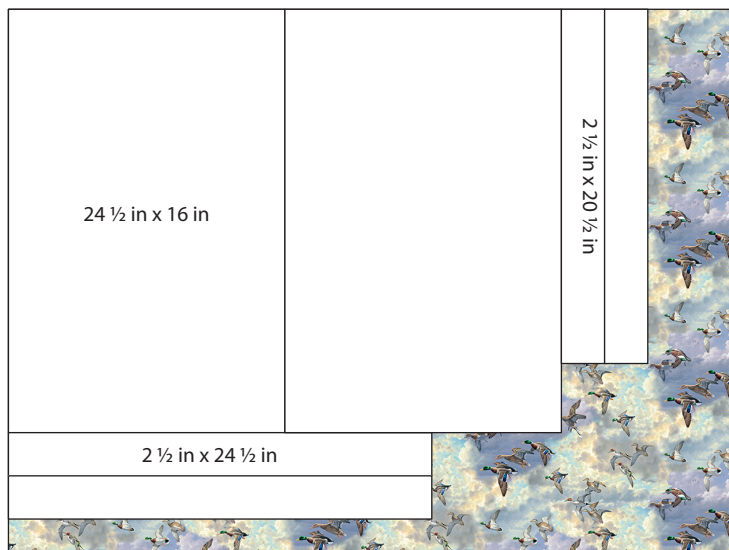


### **Rustling Leaves – 19174-MLT-CTN-D ¾ yd x wof (80.01 cm x 106.68 cm)**

Cut 2 – 24 ½ in x 16 in (62.23 cm x 40.64 cm)

Cut 2 – 2 ½ in x 24 ½ in (6.35 cm x 62.23 cm)

Cut 2 – 2 ½ in x 20 ½ in (6.35 cm x 52.07 cm)



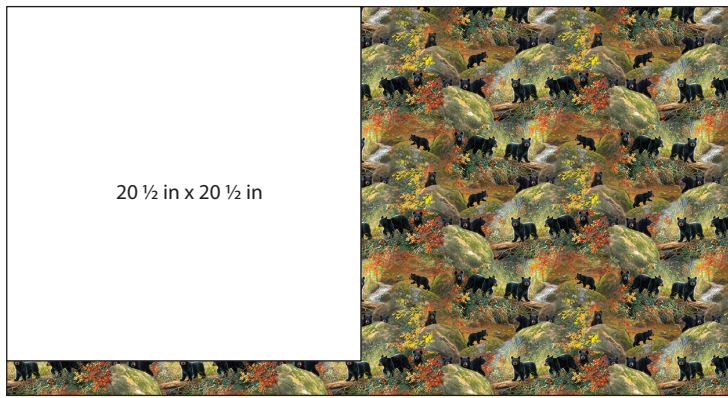
### **Into the Wild – 19176-BLU-CTN-D ¾ yd x wof (80.01 cm x 106.68 cm)**

Cut 2 – 24 ½ in x 16 in (62.23 cm x 40.64 cm)

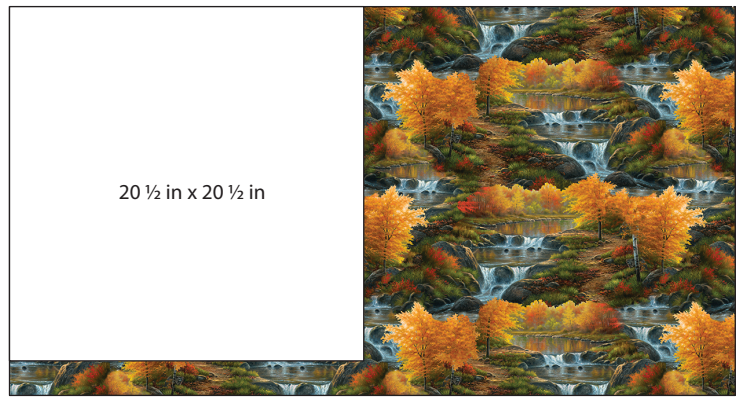
Cut 2 – 2 ½ in x 24 ½ in (6.35 cm x 62.23 cm)

Cut 2 – 2 ½ in x 20 ½ in (6.35 cm x 52.07 cm)





**Falltime Playground – 19175-MLT-CTN-D** 3/4 yd x wof (57.15 cm x 106.68 cm)  
Cut 1 – 20 1/2 in x 20 1/2 in (52.07 cm x 52.07 cm)

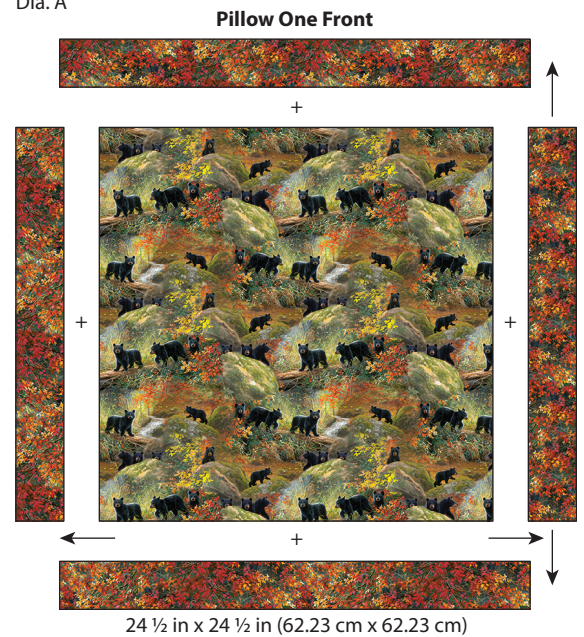


**Autumn Glory – 19179-MLT-CTN-D** 3/4 yd x wof (57.15 cm x 106.68 cm)  
Cut 1 – 20 1/2 in x 20 1/2 in (52.07 cm x 52.07 cm)

## Sewing – Pillow One

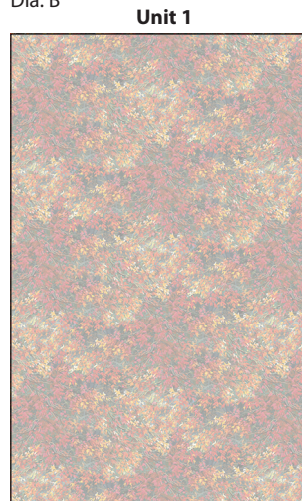
1. Refer to Diagram A to sew one Rustling Leaves strip 2 1/2 in x 20 1/2 in (6.35 cm x 52.07 cm) to each side of one Falltime Playground square 20 1/2 in x 20 1/2 in (52.07 cm x 52.07 cm). Sew one Rustling Leaves strip 2 1/2 in x 24 1/2 in (6.35 cm x 62.23 cm) to the top and to the bottom of the Falltime Playground square to make the Pillow One Front. The Pillow One Front should measure 24 1/2 in x 24 1/2 in (62.23 cm x 62.23 cm).

Dia. A



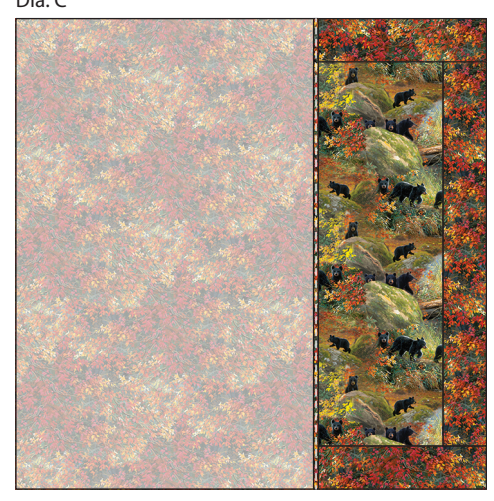
2. Refer to Diagram B to turn under the 24 1/2 in (62.23 cm) edge of one Rustling Leaves strip 16 in x 24 1/2 in (40.64 cm x 62.23 cm) approximately 1/4 in (6.35 mm), press and repeat to make a finished edge on one edge of the Rustling Leaves strip to make (1) Unit 1 strip. Repeat with the second Unit 1 strip.
3. Refer to Diagram C to position and pin one Unit 1 strip RST with the Pillow #1 Front, aligning the left side, top and bottom edges.

Dia. B



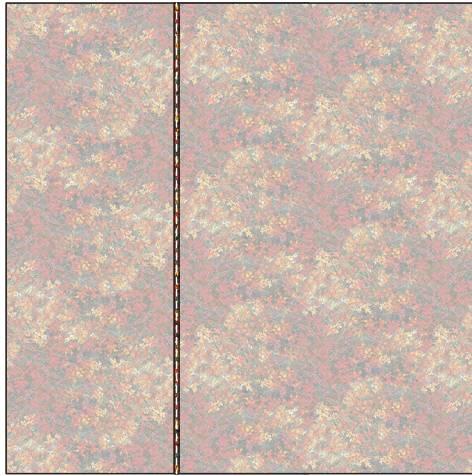
Make 2

Dia. C

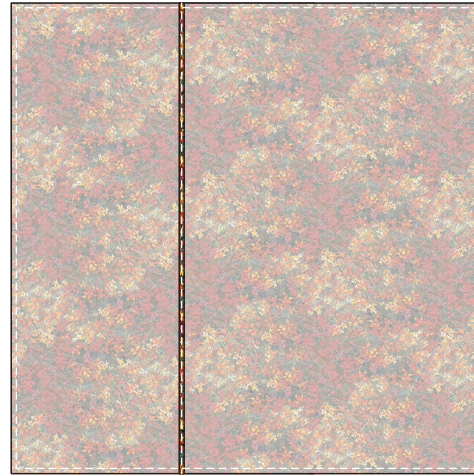


4. Refer to Diagram D to position and pin the second Unit 1 strip RST and overlapping the finished edges in the middle and aligning the raw edges with the right, top and bottom edges.
5. Refer to Diagram E to stitch around the pillow front and back to complete the pillow.

Dia. D



Dia. E

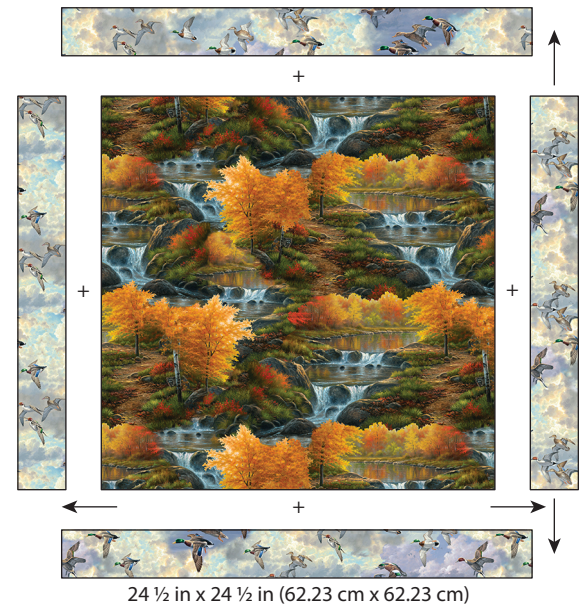


6. Turn the pillow right side out and insert one 24 in (60.96 cm) pillow form to complete.

## Sewing – Pillow Two

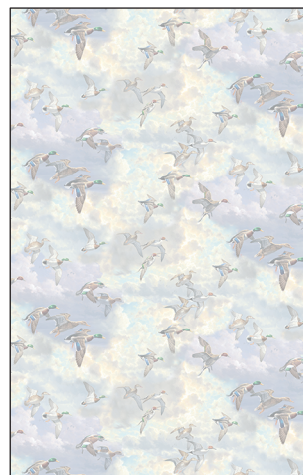
7. Refer to Diagram F to sew one Into the Wild strip 2 ½ in x 20 ½ in (6.35 cm x 52.07 cm) to each side of one Autumn Glory square 20 ½ in x 20 ½ in (52.07 cm x 52.07 cm). Sew one Into the Wild strip 2 ½ in x 24 ½ in (6.35 cm x 62.23 cm) to the top and to the bottom of the Autumn Glory square to make the Pillow Two front. The Pillow Two Front should measure 24 ½ in x 24 ½ in (62.23 cm x 62.23 cm).

Dia. F

**Pillow Two Front**

8. Refer to Diagram G to turn under the 24 ½ in (62.23 cm) edge of one Into the Wild strip 16 in x 24 ½ in (40.64 cm x 62.23 cm) approximately ¼ in (6.35 mm), press and repeat to make a finished edge on one edge of the Into the Wild strip to make (1) Unit 2 strip. Repeat with the second Unit 2 strip.
9. Refer to Diagram H to position and pin one Unit 2 strip RST with the Pillow #2 Front, aligning the left side, top and bottom edges.

Dia. G

**Unit 2**

Make 2

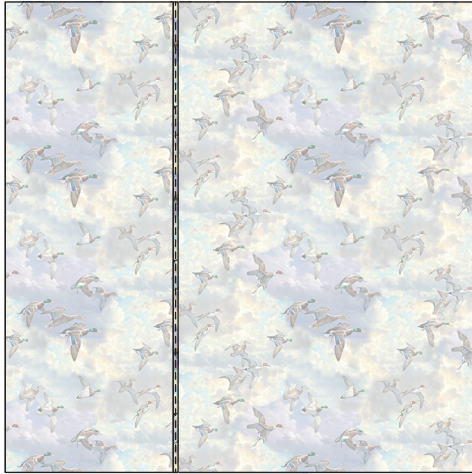
Dia. H



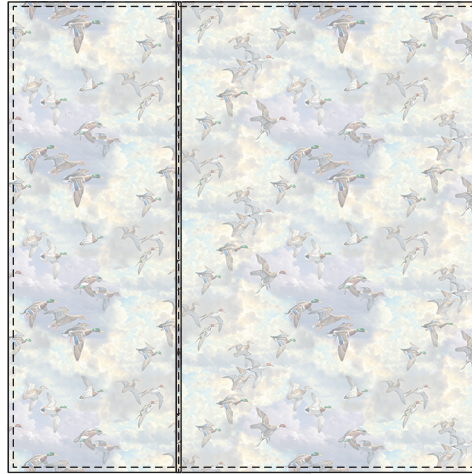


10. Refer to Diagram I to position and pin the second Unit 2 strip RST overlapping the finished edges in the middle and aligning the raw edges with the right, top and bottom edges.
11. Refer to Diagram J to stitch around the pillow front and back to complete the pillow.

Dia. I



Dia. J



12. Turn the pillow right side out and insert one 24 in (60.96 cm) pillow form to complete.

## *Sewing – Pillow Three*

13. Refer to Diagram K to turn under the 24 ½ (62.23 cm) in edge of (1) 16 in x 24 ½ in (40.64 cm x 62.23 cm) Dinnertime Chickadees strip approximately ¼ in (6.35 mm), press and repeat to make a finished edge on one edge of the 16 in x 24 ½ in (40.64 cm x 62.23 cm) Dinnertime Chickadee strip to make (1) Unit 3 strip. Repeat with the second Unit 3 strip.
14. Refer to Diagram L to position and pin one Unit 3 strip RST with the Dinnertime Chickadees square 24 ½ in x 24 ½ in (62.23 cm x 62.23 cm), aligning the left side, top and bottom edges.

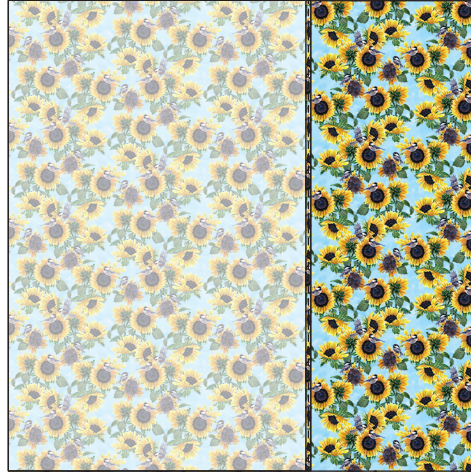
Dia. K

**Unit 3**



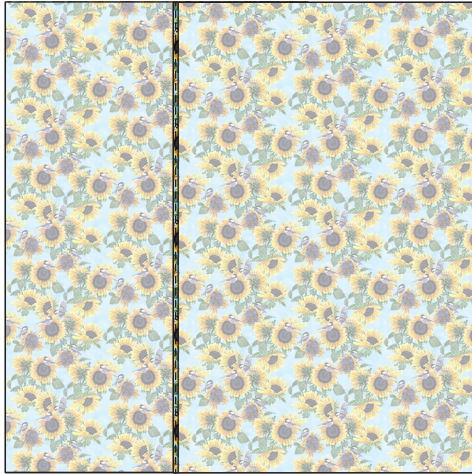
Make 2

Dia. L

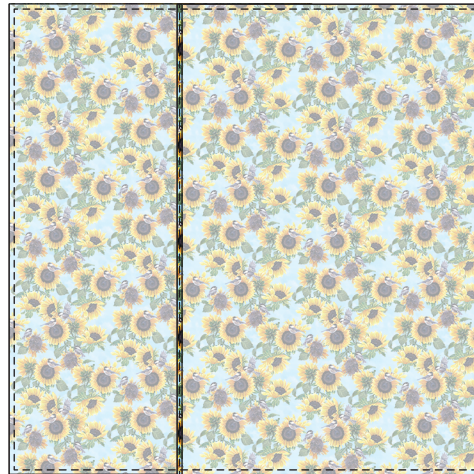


15. Refer to Diagram M to position and pin the second Unit 3 strip RST overlapping the finished edges in the middle and aligning the raw edges with the right, top and bottom edges.
16. Refer to Diagram N to stitch around the pillow front and back to complete the pillow.

Dia. M



Dia. N



17. Turn the pillow right side out and insert one 24 in (60.96 cm) pillow form to complete.

## *Finished Care Instructions*

Machine wash in cold water; gentle cycle. Do not bleach. **Tip:** Before drying, check for fabric dyes that may have run. If fabric dyes run, rewash and rinse using a color catcher to absorb loose dye. Lay flat to dry or tumble dry low.