



# Nature Walk Quilt

by Abraham Hunter



Featuring the  
Nature Walk Collection  
by Abraham Hunter  
Shipping to stores July 2022

Finished Size: 67 in x 61 in (170.18 cm x 154.94 cm)

## Fabric Needed

### 3 Wishes® Nature Walk Collection

- 1 ½ yds – Rustling Leaves (19174-MLT-CTN-D) for Piecing and Binding
- 1 yd – Large Panel (19180-PNL-CTN-D)
- 1 yd – Solid Brown
- ⅝ yd – Sunlight in the Forest (19178-MLT-CTN-D)
- ¼ yd – Falltime Playground (19175-MLT-CTN-D)
- ¼ yd – Dinnertime Chickadees (19177-BLU-CTN-D)
- ¼ yd – Into the Wild (19176-BLU-CTN-D)
- ¼ yd – Autumn Glory (19179-MLT-CTN-D)
- 4 yds – Dinnertime Chickadees (19177-BLU-CTN-D) for backing

### Additional Supplies Needed:

- 69 in x 75 in (175.26 cm x 190.50 cm) Cotton batting
- Piecing and sewing thread
- Quilting and sewing supplies
- Even-feed foot (optional for quilting)

# Before You Begin


Read all instructions before beginning project. Do not pre-wash fabrics. Press fabrics with a dry iron on cotton setting before cutting. Use a ¼ in (6.35 mm) seam allowance and sew fabrics with right sides together (RST) unless otherwise noted. Press seams in the direction of the arrows. wof = width of fabric

**Note:** A printed panel may become slightly skewed during the finishing process. Check if panel is square before cutting by folding the panel so selvages meet. If all edges do not meet, pull firmly from corner to corner until the edges meet. Continue until all corners are square.

## Cutting

Use a rotary cutter and acrylic ruler to cut the number of pieces from each fabric listed below.

5 ½ in x 42 in
2 ½ in x 42 in



**Rustling Leaves – 19174-MLT-CTN-D 1 2/3 yds x wof (152.4 cm x 106.68 cm)**

Cut 7 – 5 ½ in x 42 in (13.97 cm x 106.68 cm)

Cut 7 – 2 ½ in x 42 in (6.35 cm x 106.68 cm) for Binding



**Large Panel – 19180-PNL-CTN-D 1 yd x wof (91.44 cm x 106.68 cm)**

Fussy cut 1 – 40 ½ in x 33 ½ in (102.87 cm x 85.09 cm)

The diagram illustrates a cross-section of a 42-inch wide wall assembly. The layers from left to right are:

- 2 in x 42 in**: The top horizontal section, representing the main wall body.
- 2 1/2 in x 42 in**: A layer below the top section, likely representing a structural or insulation layer.
- 2 in x 33 1/2 in**: A layer below the previous one, representing another structural or insulation layer.
- 2 in x 6 1/2 in**: A vertical section on the left, representing a corner or edge detail.
- 1 1/2 in x 6 1/2 in**: A small rectangular section at the bottom right, representing a detail or fastener.

The diagram uses a color-coded system to represent different materials:

- Light Blue**: Structural components (e.g., studs, sheathing).
- Light Green**: Insulation layers.
- Light Yellow**: Vapor barrier or membrane.
- Light Purple**: Air and moisture barrier.
- Light Orange**: Additional insulation or barrier.
- Light Brown**: Exterior finish or cladding.

**Solid Brown – 1 yd x wof (91.44 cm x 106.68 cm)**

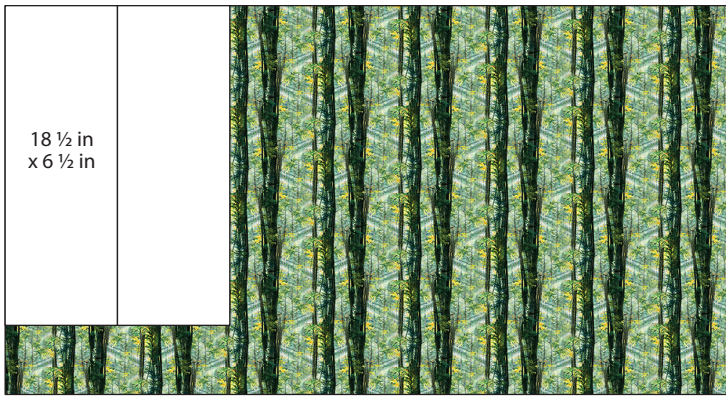
Cut 10 – 1 ½ in x 42 in (3.81 cm x 106.68 cm)

Cut 2 – 1 ½ in x 40 ½ in (3.81 cm x 102.87 cm)

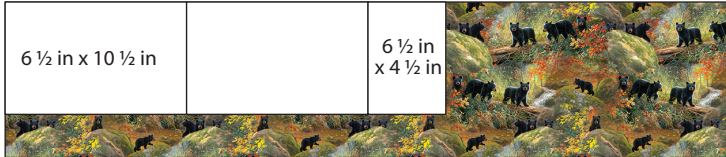
Cut 3 – 2 ½ in x 42 in (6.35 cm x 106.68 cm)

Cut 2 – 2 in x 33 ½ in (5.08 cm x 85.09 cm)





**Sunlight in the Forest – 19178-MLT-CTN-D** 5/8 yd x wof (57.15 cm x 106.68 cm)  
Cut 2 – 18 1/2 in x 6 1/2 in (46.99 cm x 16.51 cm)



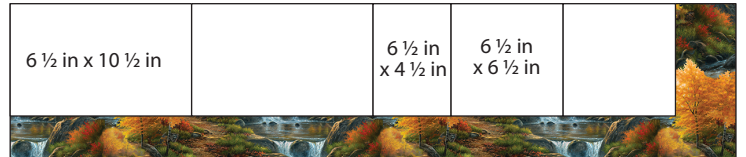
**Falltime Playground – 19175-MTL-CTN-D** 1/4 yd x wof (22.86 cm x 106.68 cm)  
Cut 2 – 6 1/2 in x 10 1/2 in (16.51 cm x 26.67 cm)  
Cut 1 – 6 1/2 in x 4 1/2 in (16.51 cm x 11.43 cm)



**Dinnertime Chickadees – 19177-BLU-CTN-D** 1/4 yd x wof (22.86 cm x 106.68 cm)  
Cut 4 – 6 1/2 in x 7 in (16.51 cm x 17.78 cm)



**Into the Wild – 19176-BLU-CTN-D** 1/4 yd x wof (22.86 cm x 106.68 cm)  
Cut 6 – 6 1/2 in x 6 1/2 in (16.51 cm x 16.51 cm)



**Autumn Glory – 19179-MLT-CTN-D** 1/4 yd x wof (22.86 cm x 106.68 cm)  
Cut 2 – 6 1/2 in x 10 1/2 in (16.51 cm x 26.67 cm)  
Cut 1 – 6 1/2 in x 4 1/2 in (16.51 cm x 11.43 cm)  
Cut 2 – 6 1/2 in x 6 1/2 in (16.51 cm x 16.51 cm)

## Sewing

1. Refer to Diagram A to sew Brown Solid strip 2 in x 33 1/2 in (5.08 cm x 85.09 cm) RST to each side of the Large Panel 40 1/2 in x 33 1/2 in (102.87 cm x 85.09 cm).
2. Sew three Brown Solid strips 2 1/2 in x 42 in (6.35 cm x 106.68 cm) end to end RST with diagonal seams; trim seam allowance to 1/4 in (6.35 mm). From the sewn strip cut two Brown Solid strips 2 1/2 in x 43 1/2 in (6.35 cm x 110.49 cm). Refer to Diagram A to sew one Brown Solid strip 2 1/2 in x 43 1/2 in (6.35 cm x 110.49 cm) to the top and to the bottom of the Large Panel to make the Unit 1 rectangle. Trim the unit to measure 42 1/2 in x 36 1/2 in (107.95 cm x 92.71 cm).

Dia. A



Trim to measure 42 1/2 in x 36 1/2 in (107.95 cm x 92.71 cm) after the borders are added

3. Refer to Diagram B to sew together one Brown Solid strip 2 in x 6 ½ in (5.08 cm x 16.51 cm), one Dinnertime Chickadee strip 6 ½ in x 7 in (16.51 cm x 17.78 cm), one Brown Solid strip 1 ½ in x 6 ½ in (3.81 cm x 16.51 cm), one Sunlight in the Forest strip 6 ½ in x 18 ½ in (16.51 cm x 46.99 cm), one Brown Solid strip 1 ½ in x 6 ½ in (3.81 cm x 16.51 cm), one Dinnertime Chickadee strip 6 ½ in x 7 in (16.51 cm x 17.78 cm) and one Brown Solid strip 2 in x 6 ½ in (5.08 cm x 16.51 cm), in that order from top to bottom, to make the Unit 2 strip. The unit should measure 6 ½ in x 36 ½ in (16.51 cm x 92.71 cm). Repeat to make a second Unit 2 strip.

Dia. B

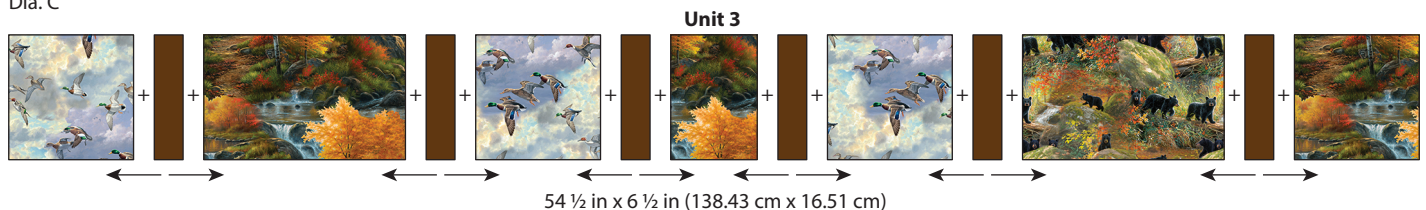
**Unit 2**



6 ½ in x 36 ½ in  
(16.51 cm x 92.71 cm)  
Make 2

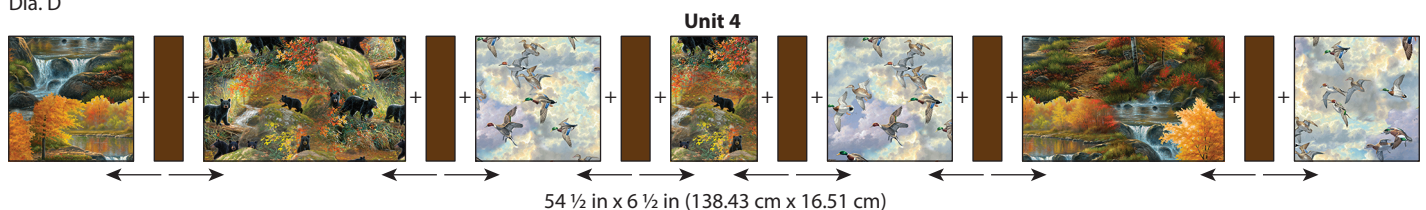
4. Refer to Diagram C to sew together three Into the Wind squares 6 ½ in x 6 ½ in (16.51 cm x 16.51 cm), six Brown Solid strips 1 ½ in x 6 ½ in (3.81 cm x 16.51 cm), one Autumn Glory strip 6 ½ in x 10 ½ in (16.51 cm x 26.67 cm), one Autumn Glory strip 4 ½ in x 6 ½ in (11.43 cm x 16.51 cm), one Falltime Playground strip 6 ½ in x 10 ½ in (16.51 cm x 26.67 cm) and one Autumn Glory square 6 ½ in x 6 ½ in (16.51 cm x 16.51 cm) to make the Unit 3 strip. The unit should measure 54 ½ in x 6 ½ in (138.43 cm x 16.51 cm).

Dia. C



5. Refer to Diagram D to sew together one Autumn Glory square 6 ½ in x 6 ½ in (16.51 cm x 16.51 cm), six Brown Solid strips 1 ½ in x 6 ½ in (3.81 cm x 16.51 cm), one Falltime Playground strip 6 ½ in x 10 ½ in (16.51 cm x 26.67 cm), one Falltime Playground strip 4 ½ in x 6 ½ in (11.43 cm x 16.51 cm), three Into the Wind squares 6 ½ in x 6 ½ in (16.51 cm x 16.51 cm) and one Autumn Glory strip 6 ½ in x 10 ½ in (16.51 cm x 26.67 cm) to make the Unit 4 strip. The unit should measure 54 ½ in x 6 ½ in (138.43 cm x 16.51 cm).

Dia. D





6. Refer to Diagram E to sew one Unit 2 strip  $6\frac{1}{2}$  in x  $36\frac{1}{2}$  in (16.51 cm x 92.71 cm) to the left and to the right sides of the Unit 1 rectangle. Sew the Unit 3 strip  $54\frac{1}{2}$  in x  $6\frac{1}{2}$  in (138.43 cm x 16.51 cm) to the top of the Unit 1 rectangle and the Unit 4 strip  $54\frac{1}{2}$  in x  $6\frac{1}{2}$  in (138.43 cm x 16.51 cm) to the bottom of the Unit 1 rectangle to make the Unit 5 rectangle. The unit should measure  $54\frac{1}{2}$  in x  $48\frac{1}{2}$  in (138.43 cm x 123.19 cm).

Dia. E



7. Sew three Brown Solid strips (2 in x 42 in / 5.08 cm x 106.68 cm) end to end RST with diagonal seams; trim seam allowance to ¼ in (6.35 mm). From the sewn strip cut two Brown Solid strips 2 in x 48 ½ in (5.08 cm x 123.19 cm). Refer to Diagram F to sew one Brown Solid strip (2 in x 48 ½ in / 5.08 cm x 123.19 cm) to each side of the Unit 5 rectangle.
8. Sew three Brown Solid strips 2 in x 42 in (5.08 cm x 106.68 cm) end to end RST with diagonal seams; trim seam allowance to ¼ in (6.35 mm). From the sewn strip cut two Brown Solid strips 2 in x 57 ½ in (5.08 cm x 146.05 cm). Refer to Diagram F to sew one Brown Solid strip 2 in x 57 ½ in (5.08 cm x 146.05 cm) to the top and to the bottom of the Unit 5 rectangle to make the Unit 6 rectangle. The unit should measure 57 ½ in x 51 ½ in (146.05 cm x 130.81 cm).

Dia. F

Unit 6



57 ½ in x 51 ½ in (146.05 cm x 130.81 cm)



9. Sew three Rustling Leaves strips 5 ½ in x 42 in (13.97 cm x 106.68 cm) end to end RST with diagonal seams; trim seam allowance to ¼ in (6.35 mm). From the sewn strip cut two Rustling Leaves strips 5 ½ in x 51 ½ in (13.97 cm x 130.81 cm). Refer to Diagram G to sew one Rustling Leaves strip 5 ½ in x 51 ½ in (13.97 cm x 130.81 cm) to each side of the Unit 6 rectangle.
10. Sew four Rustling Leaves strips 5 ½ in x 42 in (13.97 cm x 106.68 cm) end to end RST with diagonal seams; trim seam allowance to ¼ in (6.35 mm). From the sewn strip cut two Rustling Leaves strips 5 ½ in x 67 ½ in (13.97 cm x 171.45 cm). Refer to Diagram G to sew one Rustling Leaves strip 5 ½ in x 67 ½ in (13.97 cm x 171.45 cm) to the top and to the bottom of the Unit 6 rectangle to make the quilt top. The quilt top should measure 67 ½ in x 61 ½ in (171.45 cm x 156.21 cm)

Dia. G

Quilt Layout



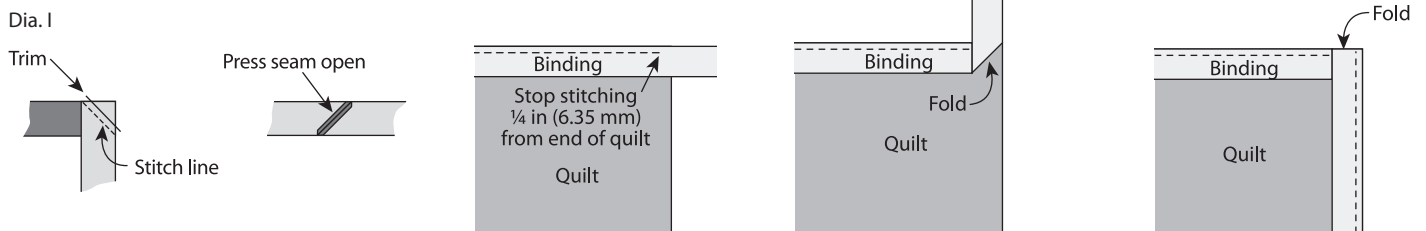
11. To make the dinnertime Chickadee backing, remove the selvages and cut two pieces 42 in x 69 in (106.68 cm x 175.26 cm). Pin and sew the strips RST along the long edges as shown in Diagram H. Trim the back to measure 69 in x 75 in (175.26 cm x 190.5 cm).

Dia. H



Trim to measure 69 in x 75 in (175.26 cm x 190.5 cm)

12. Press finished Quilt Top and Backing fabric. Tape the Backing wrong side up on a firm surface. Layer Batting and Quilt Top (right side up). Baste the layers together with safety pins. Quilt as desired.
13. Once the quilting is complete, square up corners and edges, trimming excess Backing and Batting even with the Quilt Top.
14. To make the Rustling Leaves binding, remove the selvages and sew the short ends of the 2 ½ in x 42 in (6.35 cm x 106.68 cm) strips RST and to end at a 45 degree angle to make one continuous strip; press seams open. Press one short end ¼ in (6.35 mm) to the wrong side. Fold in half lengthwise with wrong sides together; press. Leaving a 2 in (5.08 cm) tail on the folded end, place cut edges of folded Binding even with the edge of the Quilt and sew, mitering the corners (Dia. I). Overlap ends, trim any excess and finish sewing the Binding. Fold the Binding over to the back and hand stitch.



## Finished Care Instructions

Machine wash in cold water; gentle cycle. Do not bleach. **Tip:** Before drying, check for fabric dyes that may have run. If fabric dyes run, rewash and rinse using a color catcher to absorb loose dye. Lay flat to dry or tumble dry low.