



 **Sunshine**
DAZE by Lisa Perry *Dress*



Back

Featuring the
Summer Daze Collection
by Jo Taylor

Shipping to stores January 2023

Size 4: 22 in width x 23 in length (55.88 cm x 58.42 cm)
Size 6: 24 ½ in width x 25 ½ in length (62.23 cm x 64.77 cm)
Bag: 7 in x 8 in

Fabric Needed

3 Wishes Fabric® Summer Daze Collection

- 1 ⅛ yds – 20264-WHT-CTN-D (Fruit Cocktail)
- ¾ yd – 20267-TRQ-CTN-D (Flower Toss)

Additional Supplies Needed:

- 1 pkg. ¼ in Elastic
- 1 spool Pink glitter ribbon - ¾ in
- 1 Hook & eye closure (small)
- Coordinating thread
- Removable fabric marker
- Small safety pin
- Basic sewing supplies
- Sewing machine
- Iron and pressing surface

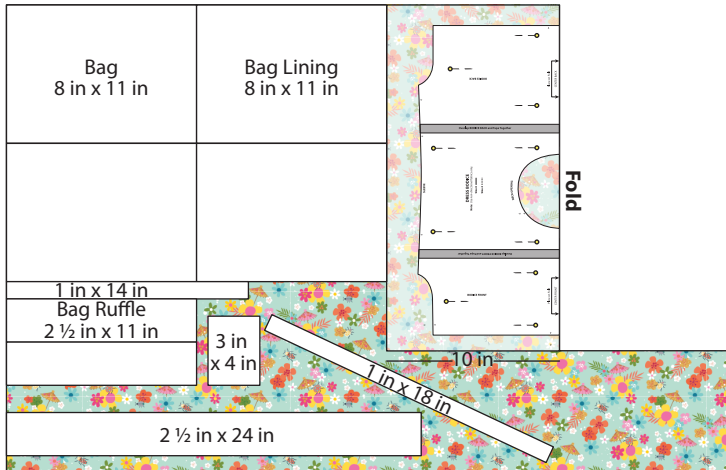
Before You Begin

Read all instructions before beginning project. Do not prewash fabrics. Press fabrics on cotton setting. Do not remove selvages. Backstitch at the beginning and end of stitching. Side seams can be finished with zigzag or serge stitching. Cut out Bodice Pattern pieces and tape together as indicated. **Note:** There are size 4 and size 6 cutting lines printed on the Bodice pattern.

Cutting

Size 4

1. Pin Bodice pattern to fabric along folded edge as shown. Cut along the outside printed line. **Note:** Do not cut along fold and do not remove pattern from Bodice. Cut additional pieces as shown below.



Flower Toss (20267-TRQ-CTN-D) – 3/4 yd (68.58 cm x 106.68 cm)

Cut 1 on fold – Size 4: Bodice Pattern

Cut 1 – Size 4: 3 in x 4 in (7.62 cm x 10.16 cm) Bodice Back Facing

Cut 1 – Size 4: 1 in x 14 in (2.54 cm x 35.56 cm) Elastic Casing

Cut 1 (on diagonal) – Size 4: 1 in x 18 in (2.54 cm x 45.72 cm) Neck Binding

Cut 2 – Size 4: 8 in x 11 in (20.32 cm x 27.94 cm) Bag

Cut 2 – Size 4: 8 in x 11 in (20.32 cm x 27.94 cm) Bag Lining

Cut 2 – Size 4: 2 1/2 in x 11 in (6.35 cm x 27.94 cm) Bag Ruffle

Cut 1 – Size 4: 2 1/2 in x 24 in (6.35 cm x 60.96 cm) Bag Strap

Elastic

Cut 2 – Size 4: 10 1/4 in (26.04 cm) Sleeves

Cut 1 – Size 4: 12 in (30.48 cm) Bodice Pack

2. Cut rectangle pieces as shown below. **Note:** Check orientation of fabrics.



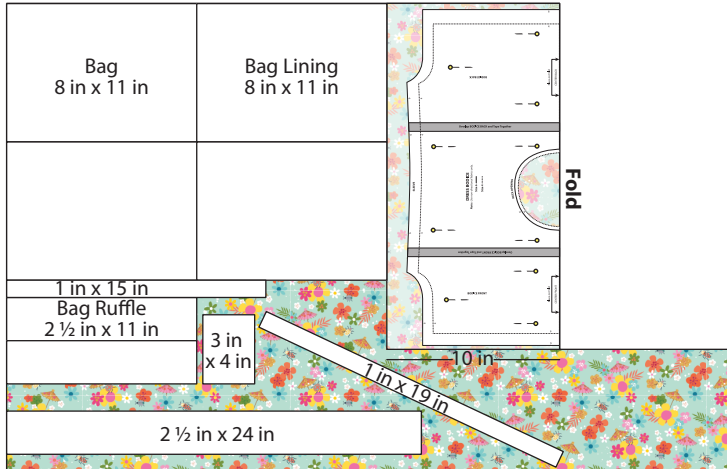
Fruit Cocktail (20264-WHT-CTN-D) – 1 1/8 yds (102.87 cm x 106.68 cm)

Cut 2 – Size 4: 17 in x 24 in (43.18 cm x 60.96 cm) Skirt Front and Back

Cut 2 – Size 4: 2 3/4 in x 24 in (6.99 cm x 60.96 cm) Waist Ties

Size 6

1. Pin Bodice pattern to fabric along folded edge as shown. Cut along the outside printed line. **Note:** Do not cut along fold and do not remove pattern from Bodice. Cut additional pieces as shown below. Label pieces after cutting.



Flower Toss (20267-TRQ-CTN-D) – 3/4 yd (68.58 cm x 106.68 cm)

- Cut 1 on fold – Size 6: Bodice Pattern
 Cut 1 – Size 6: 3 in x 4 in (7.62 cm x 10.16 cm) Bodice Back Facing
 Cut 1 – Size 6: 1 in x 15 in (2.54 cm x 38.1 cm) Elastic Casing
 Cut 1 (on diagonal) – Size 6: 1 in x 19 in (2.54 cm x 48.26 cm) Neck Binding
 Cut 2 – Size 6: 8 in x 11 in (20.32 cm x 27.94 cm) Bag
 Cut 2 – Size 6: 8 in x 11 in (20.32 cm x 27.94 cm) Bag Lining
 Cut 2 – Size 6: 2 1/2 in x 11 in (6.35 cm x 27.94 cm) Bag Ruffle
 Cut 1 – Size 6: 2 1/2 in x 24 in (6.35 cm x 60.96 cm) Bag Strap

Elastic

- Cut 2 – Size 6: 11 1/4 in (28.58 cm) Sleeves
 Cut 1 – Size 6: 13 in (30.48 cm) Bodice Pack



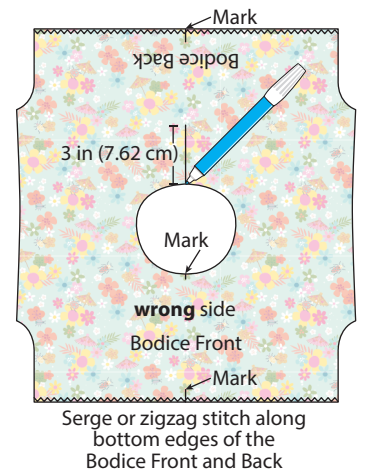
Fruit Cocktail (20264-WHT-CTN-D) – 1 1/8 yds (102.87 cm x 106.68 cm)

- Cut 2 – Size 4: 18 in x 24 in (45.72 cm x 60.96 cm) Skirt Front and Back
 Cut 2 – Size 4: 2 3/4 in x 24 in (6.99 cm x 60.96 cm) Waist Ties

Sewing

1. Before removing the pattern from the Flower Toss Bodice, use the removable marker to label the Front and Back on the **wrong** side. Fold it right sides together so side edges meet and press a light crease to indicate the center of the Bodice. Refer to Diagram A to make a mark at the Center Front and Center Back edges, also mark the center front of the neck opening. Draw a three inch line at the center back of the neck opening as shown. Serge or zigzag the bottom edges of the Front and Back.
2. Press the sides and bottom edge of the Flower Toss Bodice Back Facing 1/4 in (6.35 mm) to the **wrong** side, then again 1/4 in (6.35 mm). Sew close to the inside edge as shown (Dia. B). Fold in half so long edges meet and press fold to crease.
3. With right sides together, pin the Back Facing to the edge of the Back neck opening on the right side as shown in Diagram C, so the crease is aligned with the 3 in (7.62 cm) drawn line (on the **wrong** side). Make a mark on the facing crease at 3 in (7.62 cm) down from the edge as shown. Pin and sew 1/4 in (6.35 mm) away from the crease around the sides and bottom as shown, turning at the 3 in (7.62 cm) mark and sewing across the bottom and up the other side.

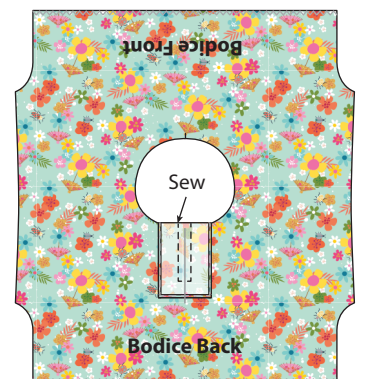
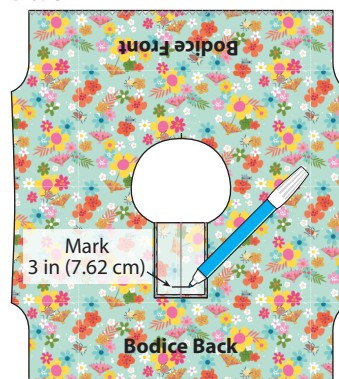
Dia. A



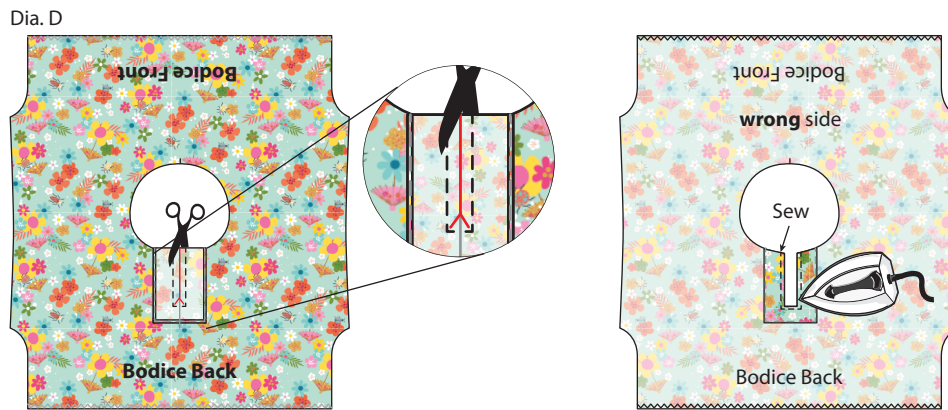
Dia. B



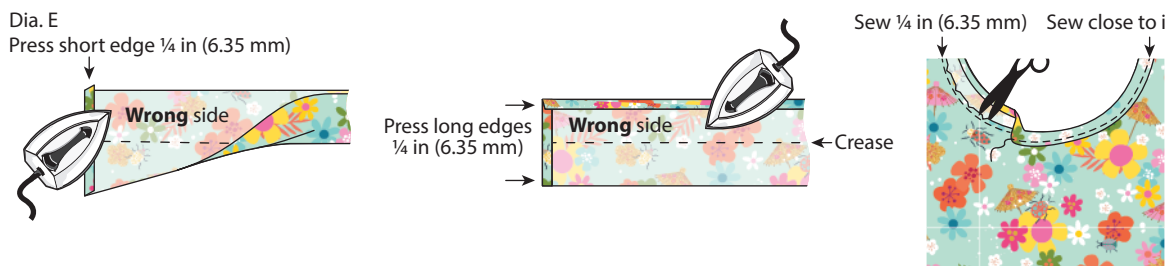
Dia. C



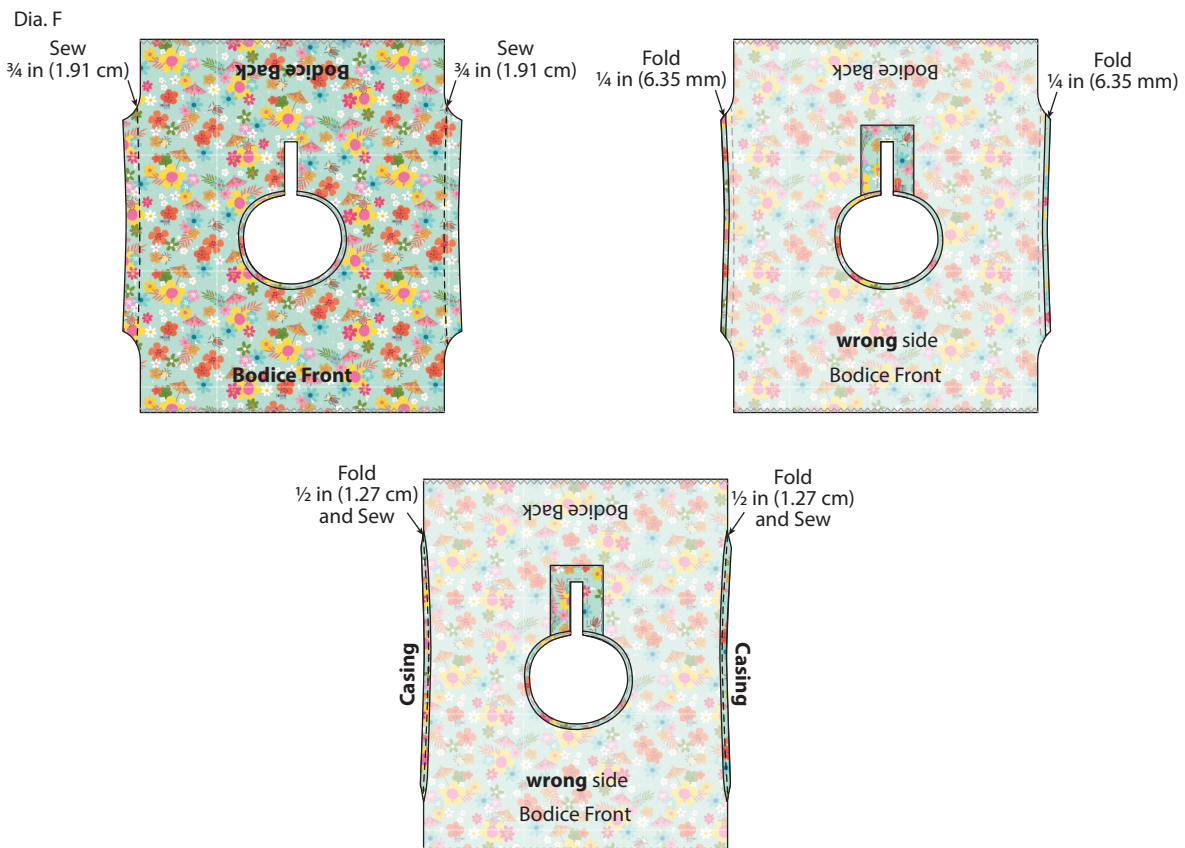
4. Refer to Diagram D to carefully cut a slit along the center crease of the Back Facing and into the corners up to, but not through the stitches. Press the Facing sides and bottom to the **wrong** side of the Bodice. Sew close to the pressed edges.



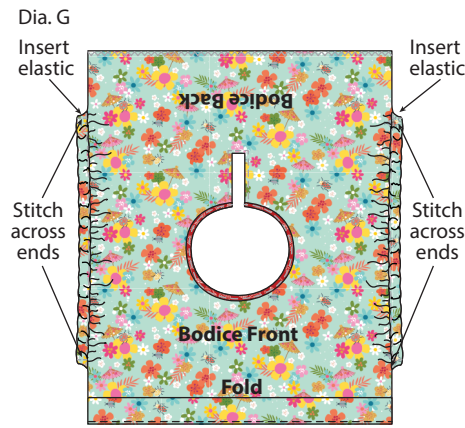
5. Fold the Flower Toss Neck Binding so long edges meet; press. Open and press both ends and one long edge $\frac{1}{4}$ in (6.35 mm) to the **wrong** side (Dia. E). Pin the cut edge along the neck opening on the **wrong** side of the Bodice; sew $\frac{1}{4}$ in (6.35 mm) from the edge and carefully clip curve up to, but not through stitching. Fold over to the right side, press and sew close to the inner folded edge as shown.



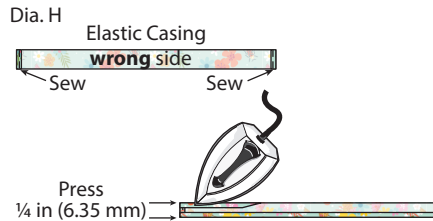
6. Sew $\frac{3}{4}$ in (1.91 cm) from the side edges of the Bodice as shown in Diagram F. Press the edges under $\frac{1}{4}$ in (6.35 mm). Then again $\frac{1}{2}$ in (1.27 cm) so the fold is on the stitching. Sew close to the inner fold to create a Casing for Elastic.



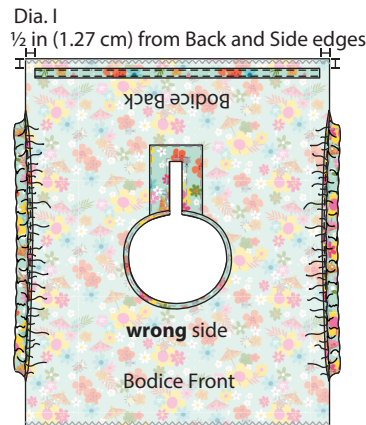
7. Attach the safety pin to one end of a piece of elastic and insert it into the Casing so the ends are even. Stitch across the ends to secure the Elastic. Repeat for the other Elastic and Casing as shown in Diagram G.



9. Press the ends of the Flower Toss Elastic Casing $\frac{1}{4}$ in (6.35 mm) to the **wrong** side; sew close to the cut edge. Press the long edges $\frac{1}{4}$ in (6.35 mm) to the **wrong** side (Dia. H).



10. Measure $\frac{1}{2}$ in (1.27 cm) from the edge of the Back and pin the Casing. **Note:** It should measure $\frac{1}{2}$ in (1.27 cm) from both side edges. Sew close to the long edges to attach (Dia. I).



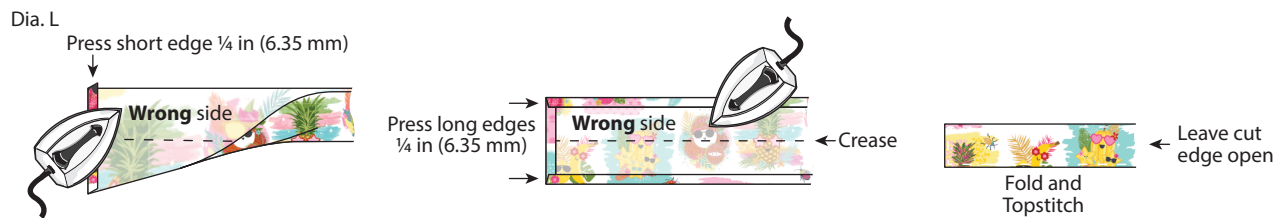
10. Press the top edge of a Fruit Cocktail Skirt piece in half right sides together. At the top edge, use the fold to make a center mark at 1 in (2.54 cm) from the top edge. Using a long gathering stitch, sew 1 in (2.54 cm) from the top edge, starting and ending $\frac{1}{2}$ in (1.27 cm) from the side edges. Sew another row of long gathering stitches $\frac{1}{8}$ in (3.18 mm) above the first row of stitching (Dia. J). **Note:** Do not backstitch at the beginning and end of stitching. Leave long tails on the thread ends as they will be pulled to gather the Skirt. Repeat with the other Skirt piece.



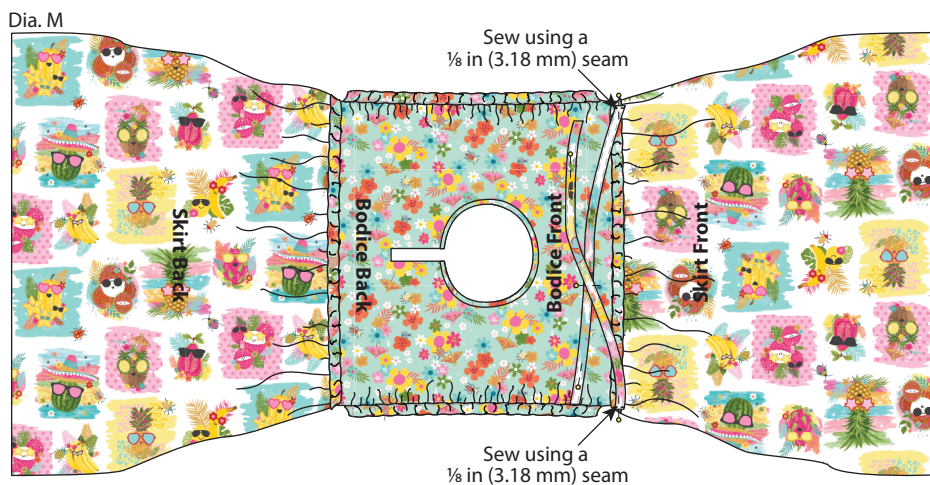
11. Measure up $\frac{1}{2}$ in (1.27 cm) from the bottom edge of the Bodice Front (right side) and draw a line from side to side. Match the center marks on the Bodice Front and a Skirt piece. Pin the **wrong** side of the Skirt to the right side of the Bodice with the top line of gathering stitches along the drawn line. Pull the tails on the sides of Skirt to gather the top edge so it fits the bottom edge of the Bodice and gathers are distributed evenly; pin and baste. Tie the tails. Sew over the rows of gathering stitches to attach the Skirt to the Bodice Front (Dia. K). Repeat for the Bodice Back.



12. Press one short end of a Fruit Cocktail Waist Tie $\frac{1}{4}$ in (6.35 mm) to the **wrong** side. Fold long edges **wrong** sides together so they meet; press to create a crease. Open and fold each long edge $\frac{1}{4}$ in (6.35 mm) to the **wrong** side; press. Fold again so edges meet and press; pin. Topstitch close to the three folded edges (Dia. L). Repeat to make the other Waist Tie.



13. On each side edge of the Bodice Front, pin the cut end of a Waist Tie over the Skirt ruffles; sew using a $\frac{1}{8}$ in (3.18 mm) seam allowance (Dia. M). **Note:** Zigzag or serge side seams to prevent fraying. **Tip:** Pin the Waist Tie ends to the center of the Dress to avoid sewing them into the side seams.



- Pin the side seams of the Dress Front and Back right sides together with edges and seams even; sew using a $\frac{1}{2}$ in (1.27 cm) seam allowance (Dia. N).
- Attach a safety pin to one end of the Elastic and insert it through the Casing. Stitch several times over each end to secure.
- Press the bottom edge of the Dress $\frac{1}{4}$ in (6.35 mm) to the **wrong** side. Then press 1 in (2.54 cm) to the **wrong** side and sew close to the inside fold to hem or hem to desired length.
- Hand sew the hook & eye closure to the Neck Binding at the back opening.
- Cut the Pink Ribbon into three 10 in (25.4 cm) pieces and make bows. Bows can be attached by hand stitching them along the gathering stitches at equal intervals as shown in photo or attached with safety pins so they can be removed for laundering.

Dia. N



Finished Care Instructions

Hand wash in cold water. Do not bleach. Hang to dry. Use color-safe detergent and dirt or dye absorbing sheet. Iron on reverse.

Bag

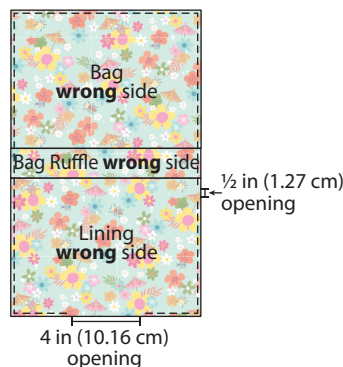
- Pin a Flower Toss Bag 8 in x 11 in (20.32 cm x 27.94 cm) and a Flower Toss Lining 8 in x 11 in (20.32 cm x 27.94 cm) to each edge of a Flower Toss Ruffle 4 in x 9 in (10.16 cm x 22.86 cm) with right sides together and edges even as shown in Diagram A. Sew using a $\frac{1}{4}$ in (6.35 mm) seam; press seams open. Repeat to sew the remaining pieces to make two.

Dia. A

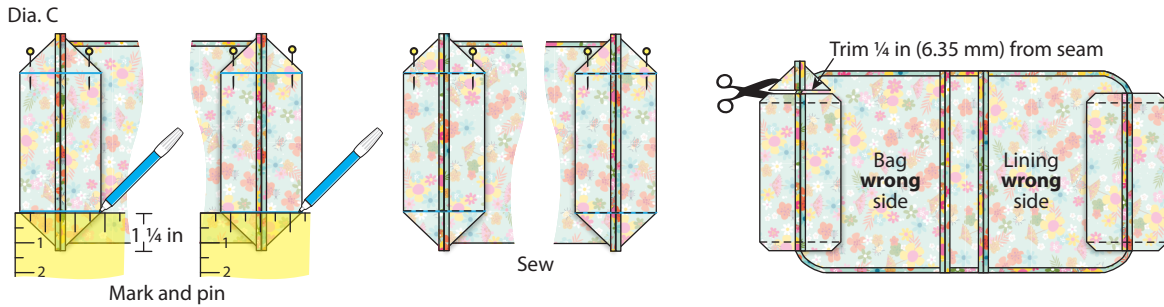


- Align and pin the Bag pieces with right sides together and seams matching. Using a $\frac{1}{4}$ in (6.35 mm) seam, sew around all edges leaving a $\frac{1}{2}$ in (1.27 cm) opening in one side of the Lining directly below the Ruffle seam and a 4 in (10.16 cm) opening in the bottom edge of the Flower Toss Lining (Dia. B). Press seams open.

Dia. B



- Refer to Diagram C to box the Flower Toss Bag bottom, bring the center bottom seam to the side seam right sides together. Mark $1\frac{1}{4}$ in (3.18 cm) from the point and sew from edge to edge. Trim the point to a $\frac{1}{4}$ in (6.35 mm) seam. Repeat for the other side. Then box the bottom of the Flower Toss Lining in the same manner.



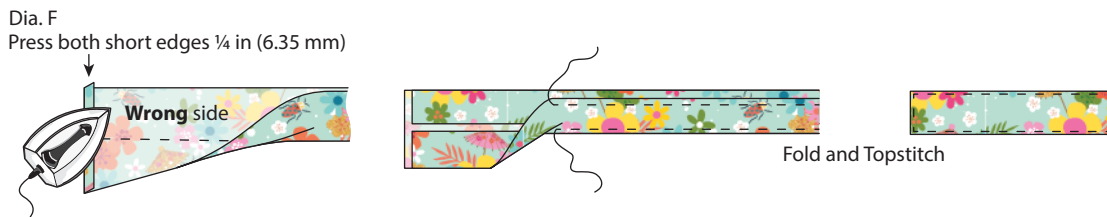
- Turn the Bag right side out by pulling it through the opening in the Lining; press. Sew the opening closed (Dia. D).



- Tuck the Lining into the Bag so that the Ruffle seams line up. Pin and baste seams together; sew along the seam. Measure down $\frac{1}{2}$ in (1.27 cm) from the seam and sew around the Bag to create the elastic casing (Dia. E).



- Press both short edges of the Flower Toss Bag Strap $\frac{1}{4}$ in (6.35 mm) to the **wrong** side. Fold the long edges **wrong** sides together so they meet; press to create a crease. Open and fold each long edge to the center crease; press. Fold again so edges meet, press and topstitch along the edges (Dia. F).



- Cut a piece of elastic 12 in (30.48 cm) and attach a safety pin to one end. Feed it through a side seam opening in the casing. Pin the two ends together and sew several times across the elastic to secure. Tuck the elastic into the opening.

- Pin each end of the Strap over a side seam on the Lining side of the Bag below the Casing; sew across the Strap to secure (Dia. G).



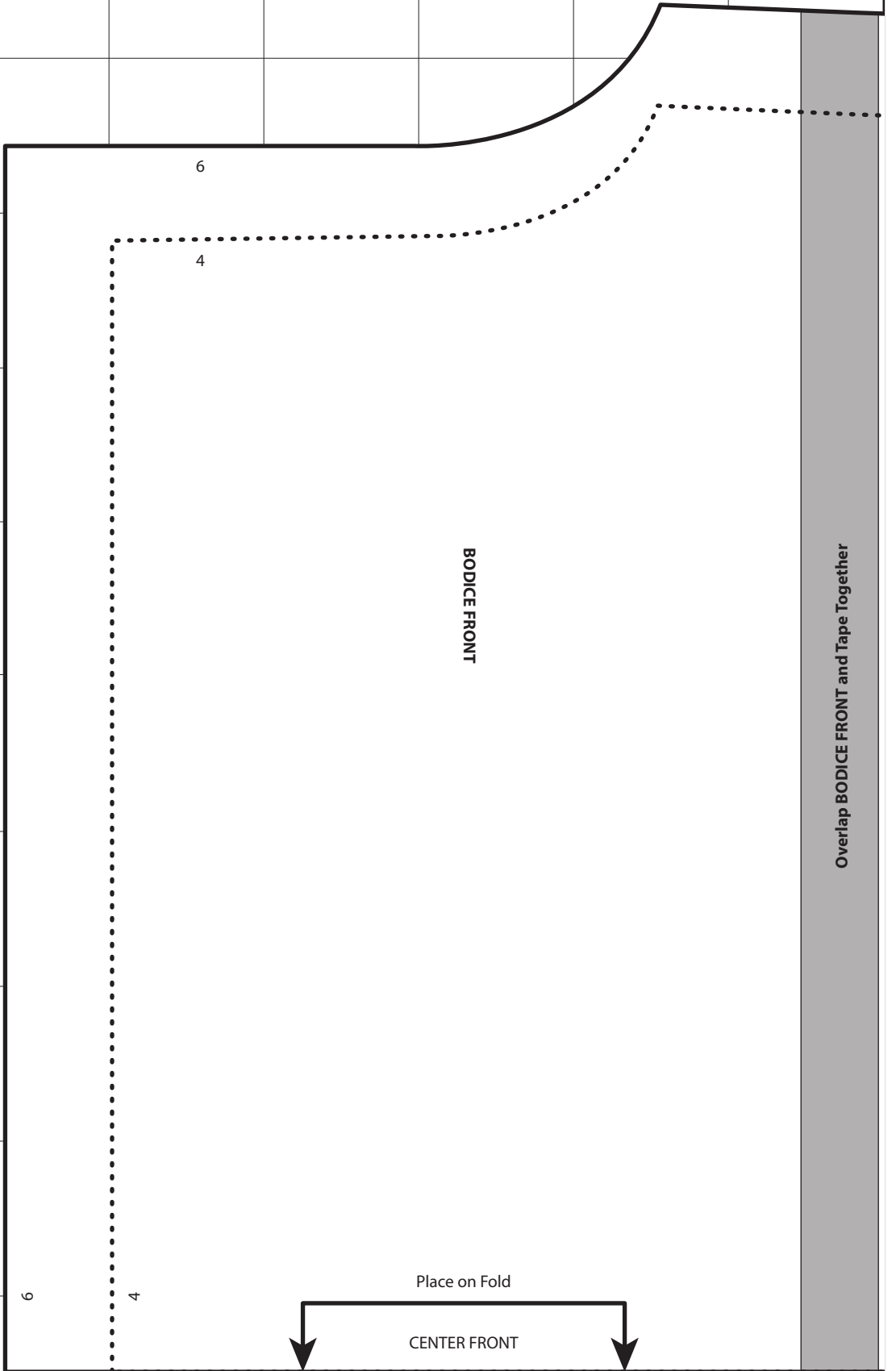
- Cut a 10 in (25.4 cm) piece of Pink Glitter Ribbon and make a bow. Bow can be attached by hand stitching it to the center of one side of the Bag along the gathering stitches or attached with a safety pin so it can be removed for laundering.

Finished Care Instructions

Hand wash. Do not bleach. Hang to dry. Use color-safe detergent and dirt or dye absorbing sheet. Iron on reverse.

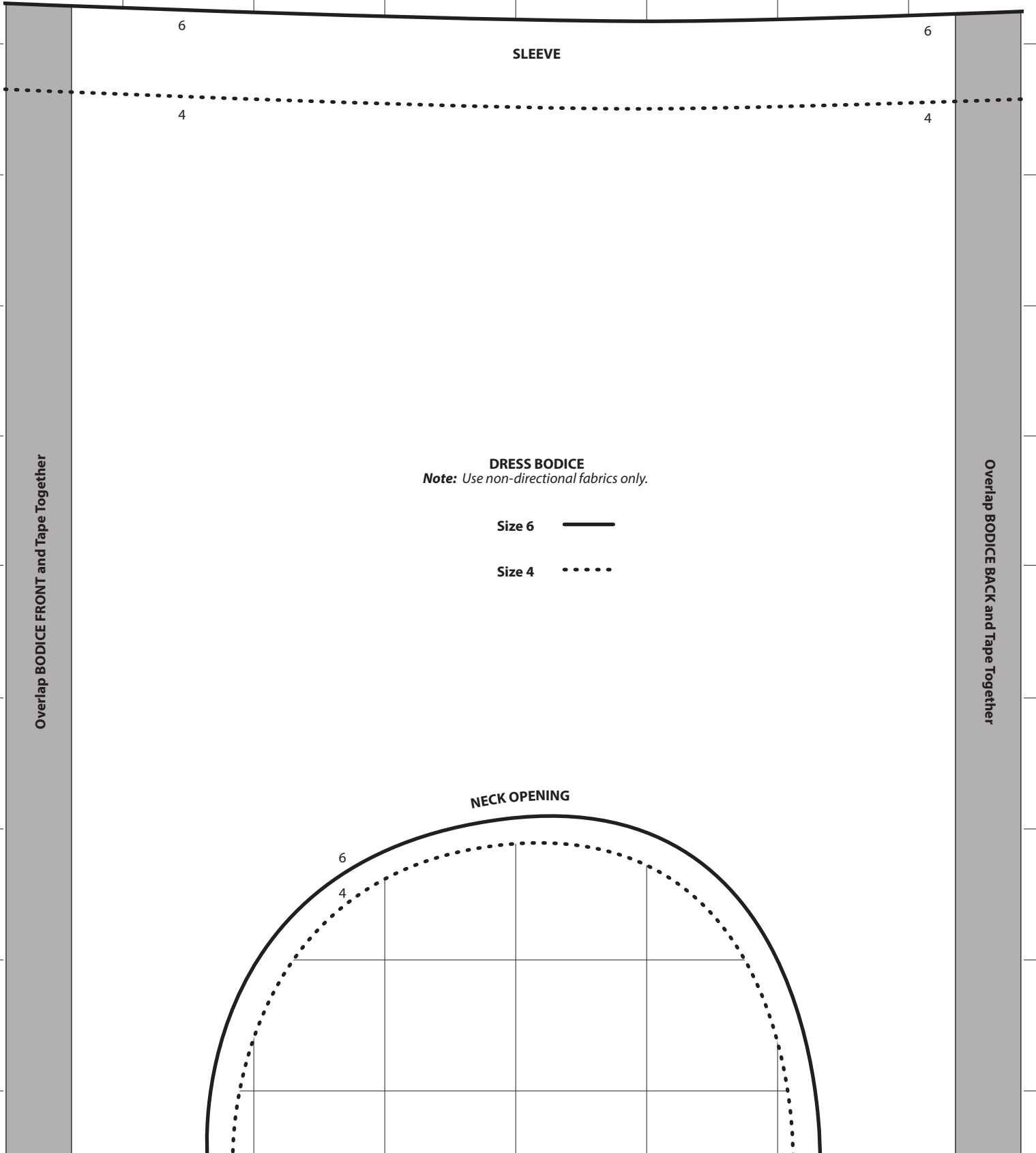
Dress Bodice Pattern (100% Scale)

Scale:
1 square =
1 in x 1 in



Dress Bodice Pattern (100% Scale)

Scale:
1 square =
1 in x 1 in



Dress Bodice Pattern (100% Scale)

Scale:
1 square =
1 in x 1 in

