



Susie Sunshine Pillow



Featuring the
Susie Sunshine Collection
by Amanda McGee

Shipping to stores
July 2023!

Finished Size: 5 ½ in x 32 in (13.97 cm x 81.28 cm)

Fabric Needed

3 Wishes® Susie Sunshine Collection

- 1 yd – Mushroom Field (20708-GLD-CTN-D)
- 1 yd – Floral Allover (20710-PNK-CTN-D)
- 1 yd – Petite Daisies (20712-ORG-CTN-D)
- ¾ yd – Hop To It (20709-TRQ-CTN-D)

Additional Supplies Needed:

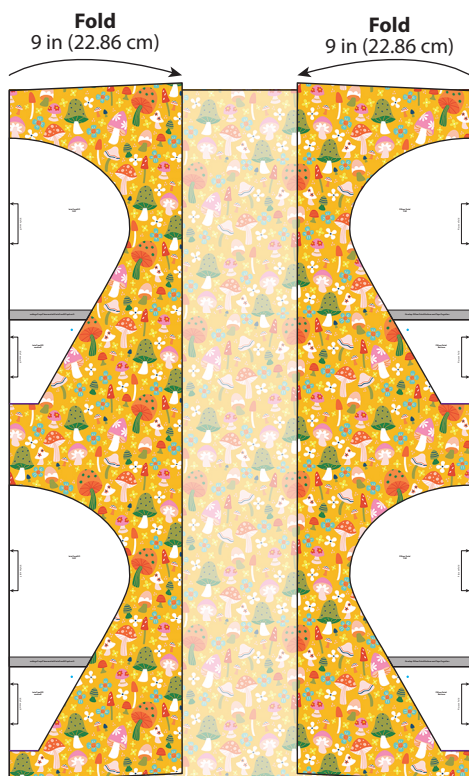
- 2 - 32oz Bags polyester fiber fill
- Sewing thread
- Basic sewing supplies

Before You Begin

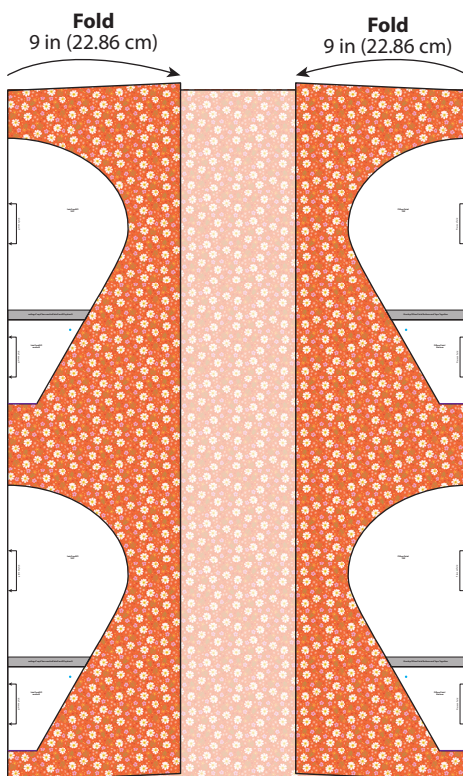
Read all instructions before beginning project. Do not pre-wash fabrics. Press fabrics with a dry iron on cotton setting before cutting. Use a ½ in (1.27 cm) seam allowance and sew fabrics with right sides together (RST) unless otherwise noted. Backstitch at the beginning and end of stitching. Press seams in the direction of the arrows. Cut out Pattern pieces and tape together as indicated.

Cutting

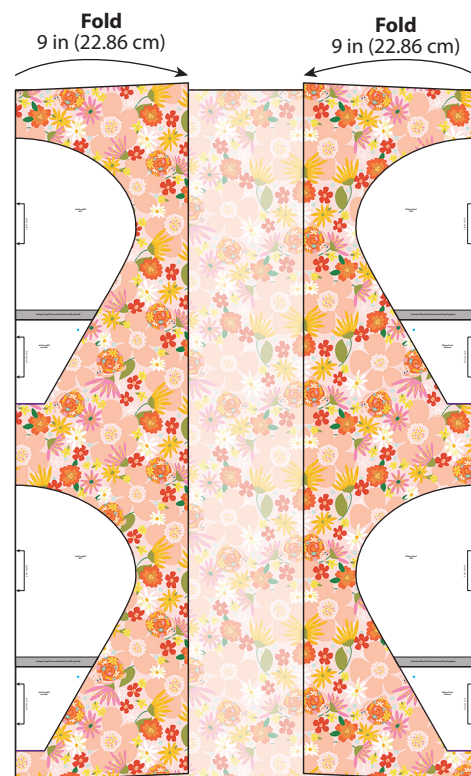
Fold fabrics and pin pattern pieces along folded edges as shown. Cut along the outside printed line. **Note:** Do not cut along fold.



Mushroom Field (20708-GLD-CTN-D)
1 yd (91.44 cm x 106.68 cm)
 Cut 4 – Flower Pillow Petal Pattern



Petite Daisies (20712-ORG-CTN-D)
1 yd (91.44 cm x 106.68 cm)
 Cut 4 – Flower Pillow Petal Pattern



Floral Allover (20710-PNK-CTN-D)
1 yd (91.44 cm x 106.68 cm)
 Cut 4 – Flower Pillow Petal Pattern

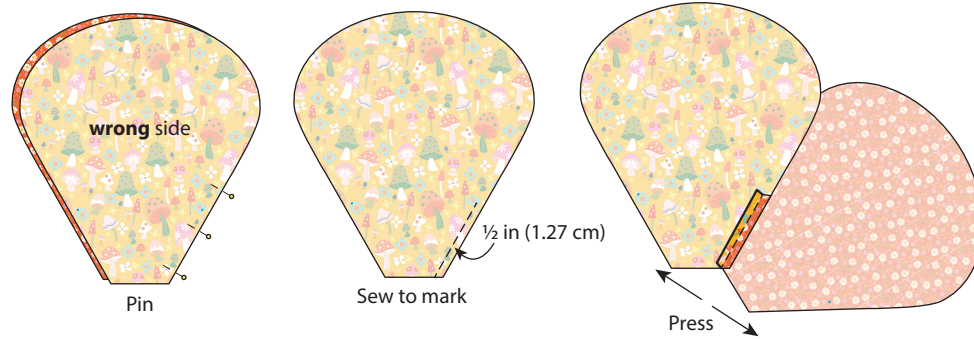


Hop To It (20709-TRQ-CTN-D) – ¾ yd (34.29 cm x 106.68 cm)
 Cut 4 – Flower Pillow Center Pattern

Sewing

1. Follow Diagram A, using one Mushroom Field petal and one Petite Daisies petal; pin RST, sew to mark and press seam open.

Dia. A



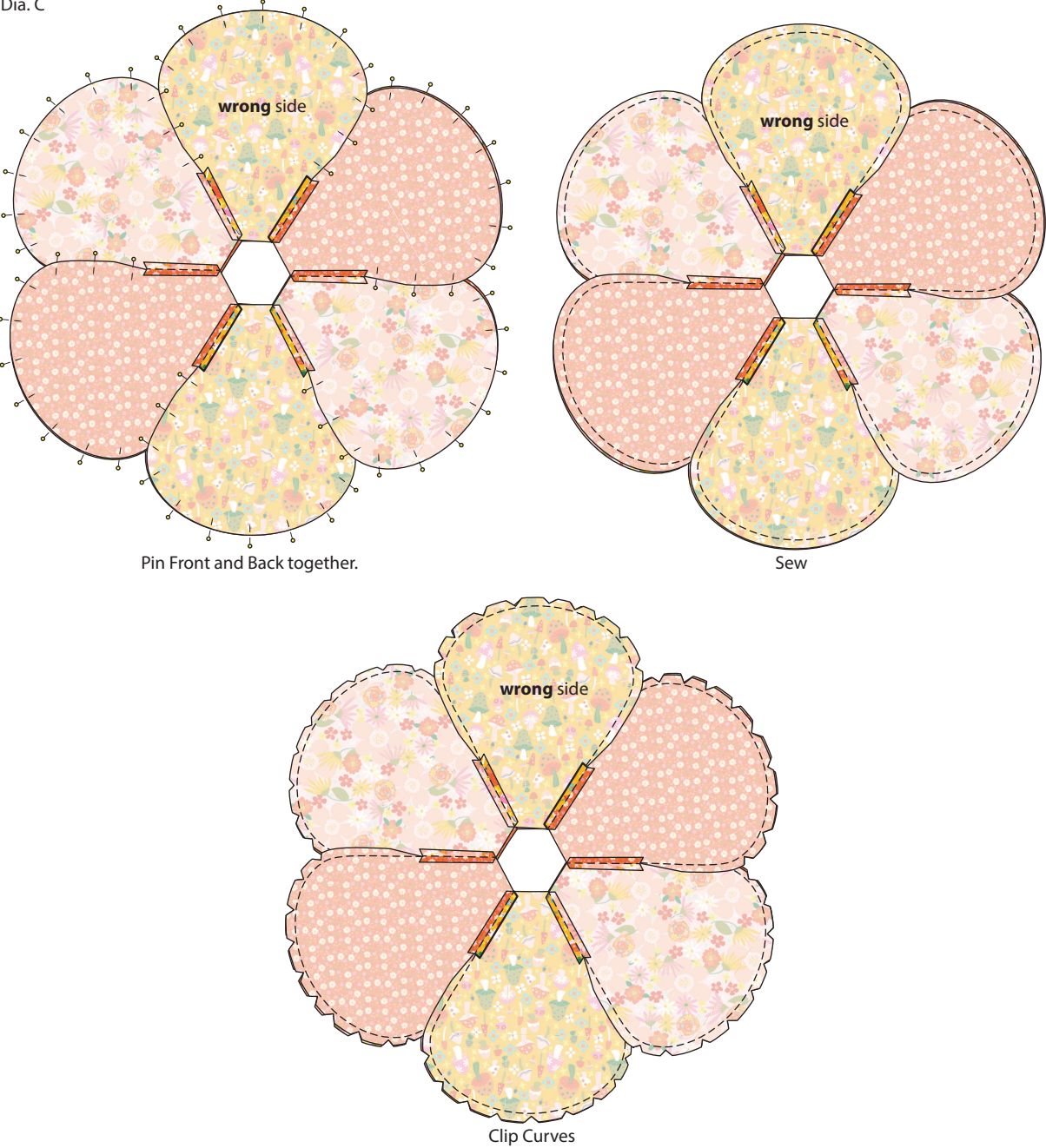
2. Continue adding petals in the following order: Floral Allover, Mushroom Field, Petite Daisies and Floral Allover. Pin RST, sew to marks and press seams open as shown in Diagram B. Repeat to make one Pillow Front and one Pillow Back.

Dia. B



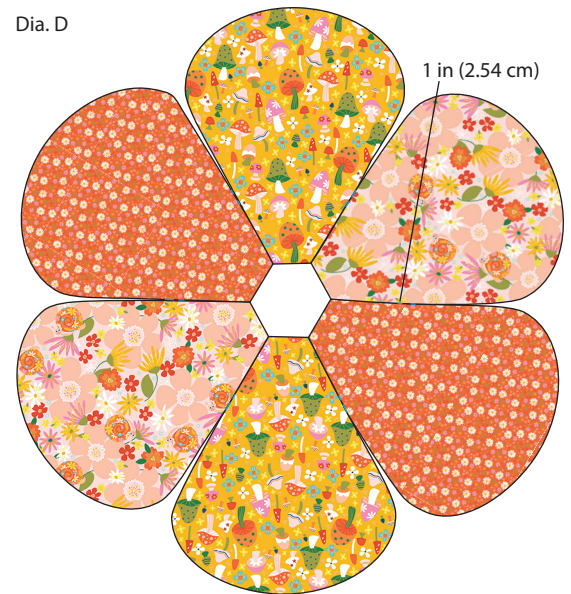
3. Place Pillow Front and Pillow Back, RST. Pin and sew, carefully clip curves up to, but not through stitching as shown in Diagram C.

Dia. C



4. Turn Pillow right side out. Topstitch a 1 in (2.54 cm) dart into each petal joint as shown in Diagram D.

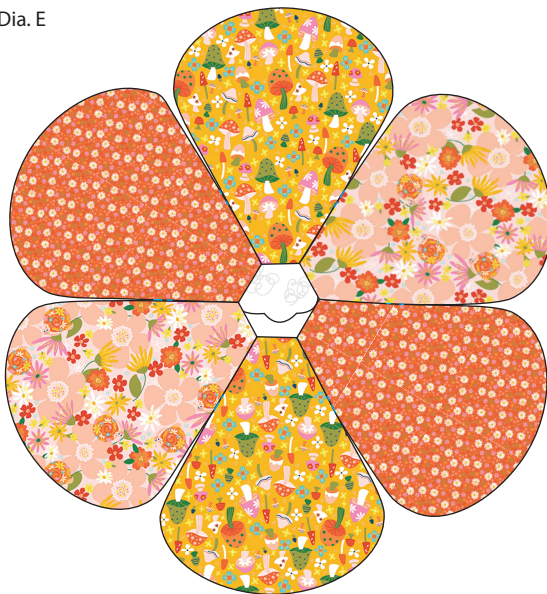
Dia. D



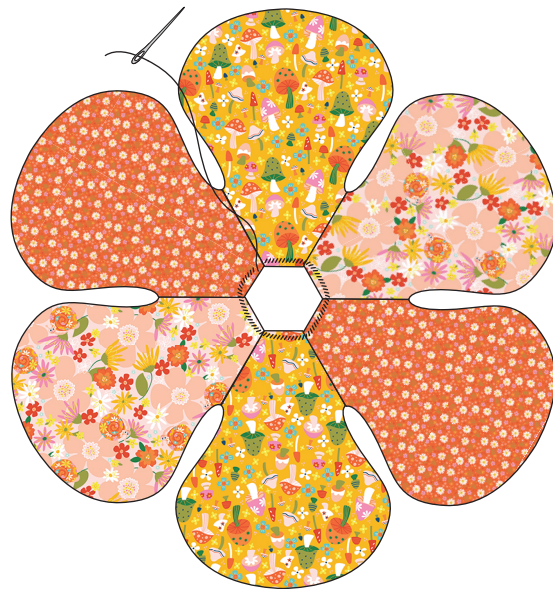
Topstitch 1 in (2.54 cm) darts where Petals join

5. Insert fiberfill through center of pillow as shown in Diagram C. Stuff firmly, but do not overstuff; hand stitch center closed.

Dia. E



Stuff from center



Hand stitch center closed

6. Place two Hop To It Pillow Center circles 8 ½ in (21.59 cm) diameter, RST and pin. Sew around edge leaving a 2 in (5.08 cm) opening in the bottom as shown in Diagram F. Carefully clip curves up to, but not through stitching. Insert fiberfill through opening. Stuff lightly and hand stitch opening closed. Make two.

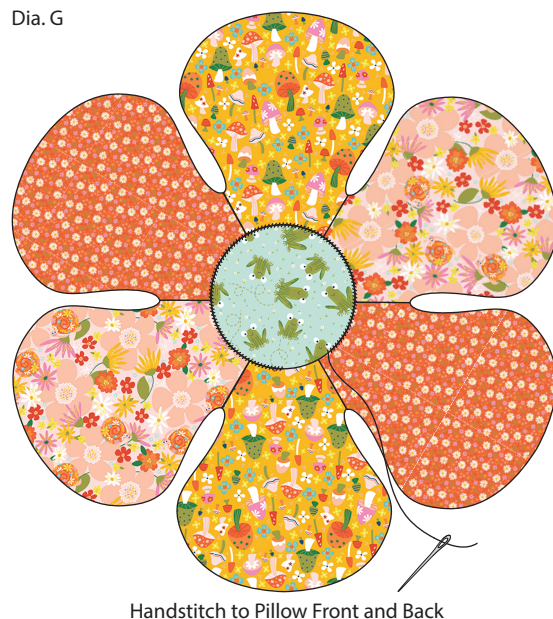
Dia. F



Finishing

7. Place one Hop To It pillow center in the middle of the Pillow Front as shown in Diagram G. Handstitch to secure. Repeat to complete the Pillow Back.

Dia. G



Finished Care Instructions

Machine wash in cold water; gentle cycle. Do not bleach. Tumble dry low.

**Flower Pillow Petal Pattern
(100% Scale)**

Scale:
1 square =
1" x 1"

Pillow Petal
TOP



Overlap Pillow Petal Bottom and Tape Together

**Flower Pillow Petal Pattern
(100% Scale)**

Scale:
1 square =
1" x 1"

Overlap Pillow Petal Top and Tape Together



Pillow Petal
Bottom

Place on Fold



**Flower Pillow Center Pattern
(100% Scale)**

Scale:
1 square =
1" x 1"

Pillow Center

Place on Fold

