

Art of Midnight

by Chelsea Designworks



Quilt Size: 93" x 93" (2.36m x 2.36m)

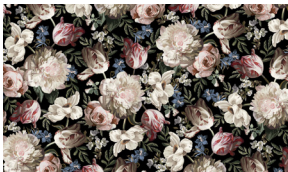
Skill Level: Intermediate

Heroes Quilt

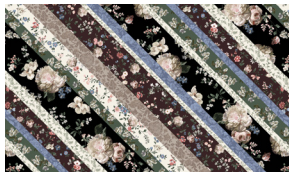
Designed and sold by Lauren Smith of Tourmaline & Thyme Quilts
www.tourmalinethymequilts.com

Heroes Quilt Ordering Guide

SKU	Yards	Meters	6 Kits	12 Kits
8125-99	1/2 yds	0.46m	1 bolt	1 bolt
8126-93*	1 yd	0.91m	1 bolt	1 bolt
8127-66	2 yds	1.83m	1 bolt	2 bolts
8128-20	2 1/4 yds	2.06m	1 bolt	2 bolts
8129-99	2/3 yds	0.61m	1 bolt	1 bolt
8130-33	1 yd	0.91m	1 bolt	1 bolt
8131-99	3/4 yds	0.69m	1 bolt	1 bolt
8132-99	1/2 yds	0.46m	1 bolt	1 bolt
8133-93	2 1/2 yds	2.29m	2 bolts	3 bolts
Carbon-23 (10-yard bolt)	1 yd	0.91m	1 bolt	2 bolts
Backing Fabric Option				
8168-91 (18-yard bolt)	3 yds	2.74m	2 bolts	3 bolts
<p>* Indicates binding fabric. FQ = 18" x 22" (0.45m x 0.55m) All fabric quantities are based on 15yd bolts unless otherwise indicated.</p>				



8125-99
Art of Midnight Floral
Midnight



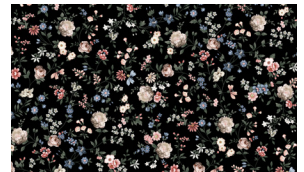
8126-93*
Diagonal Pieced Stripe
Midnight/Taupe



8127-66
Ditsy
Dark Sage



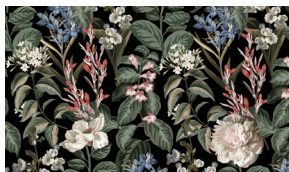
8128-20
Small Vine
Warm White



8129-99
Large Leafy Vine
Midnight



8130-33
Floral Damask
Taupe



8131-99
Medium Vine
Midnight



8132-99
Floral Medallion
Midnight



8133-93
Border Stripe
Midnight/Taupe



Carbon-23
Peppered Cottons
Carbon