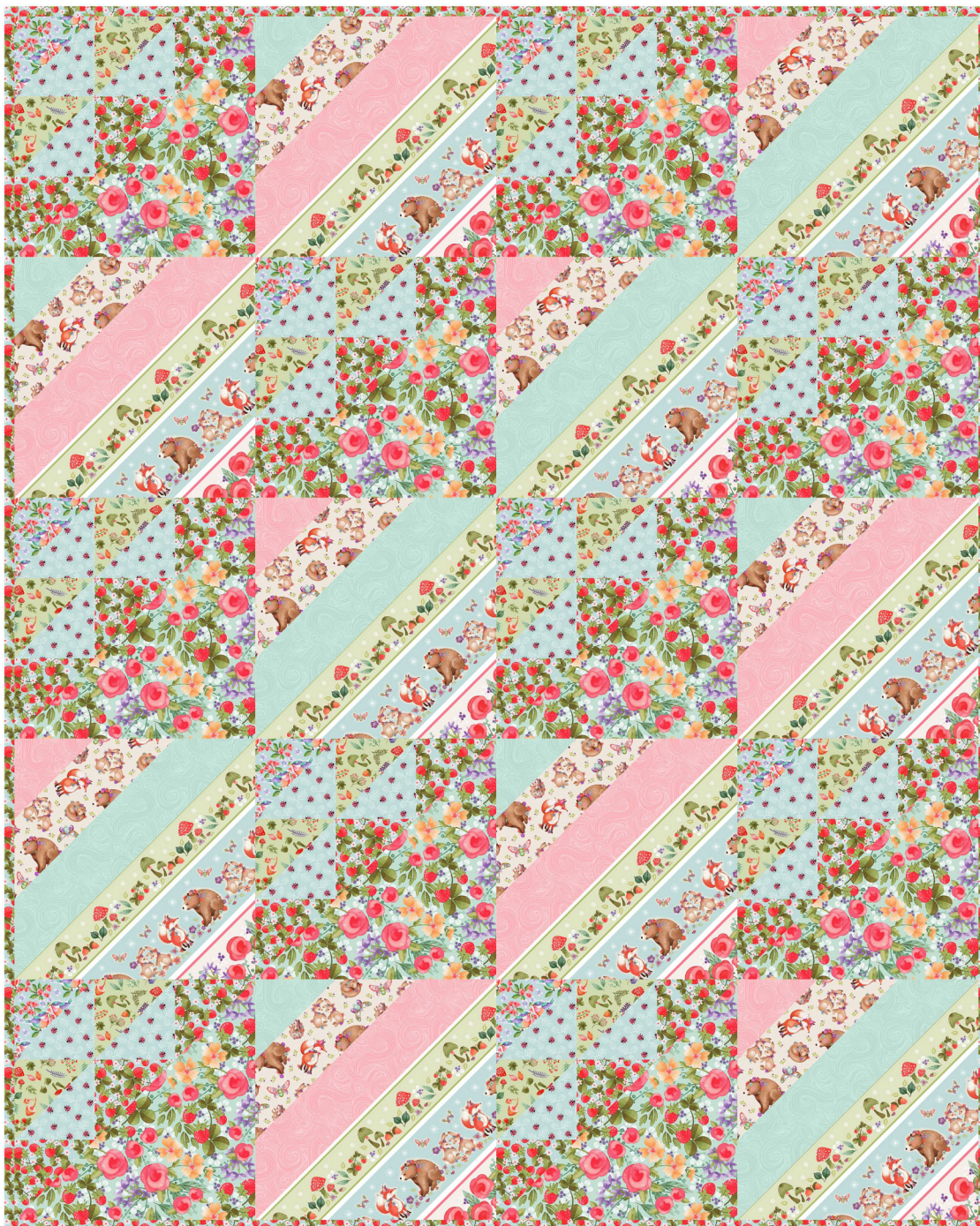


# In the Thicket

by Nancy Archer



Quilt Size: 49" x 61" (1.24m x 1.55m)

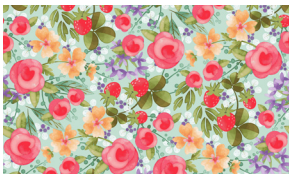
Skill Level: Advanced Beginner

## Roman Geese Quilt

Designed and sold by Laureen Smith of Tourmaline & Thyme Quilts

[www.tourmalinethymequilts.com](http://www.tourmalinethymequilts.com)

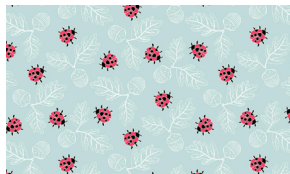
| Roman Geese Quilt<br>Ordering Guide  |                  |           |        |         |         |
|--|------------------|-----------|--------|---------|---------|
| SKU  |                  | Yards     | Meters | 6 Kits  | 12 Kits |
|  | 8072-72          | 7/8 yds   | 0.80m  | 1 bolt  | 1 bolt  |
|  | 8074-78*         | 3/4 yds   | 0.69m  | 1 bolt  | 1 bolt  |
|  | 8075-78          | 1/3 yds   | 0.30m  | 1 bolt  | 1 bolt  |
|  | 8076-72          | 1/4 yds   | 0.23m  | 1 bolt  | 1 bolt  |
|  | 8077-43          | 1/2 yds   | 0.46m  | 1 bolt  | 1 bolt  |
|  | 8078-62          | 1/3 yds   | 0.30m  | 1 bolt  | 1 bolt  |
|  | 8080-72          | 1 3/4 yds | 1.60m  | 1 bolt  | 2 bolts |
|  | 1351-Blush       | 1/2 yds   | 0.46m  | 1 bolt  | 1 bolt  |
|  | 1351-Robin's Egg | 1/2 yds   | 0.46m  | 1 bolt  | 1 bolt  |
| Backing Fabric Option  |                  |           |        |         |         |
|  | 8073-63          | 3 1/2 yds | 3.20m  | 2 bolts | 3 bolts |
| * Indicates binding fabric.<br>FQ = 18" x 22" (0.45m x 0.55m)<br>All fabric quantities are based on 15yd bolts unless otherwise indicated. |                  |           |        |         |         |



8072-72  
Large Floral  
Blue-Multi



8074-78\*  
Strawberries  
Light Blue



8075-78  
Tossed Ladybugs  
Light Blue



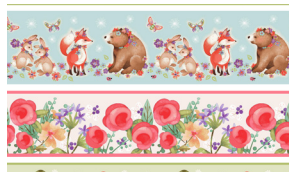
8076-72  
Bluebirds  
Light Blue



8077-43  
Tossed Woodland Animals  
Dark Pink



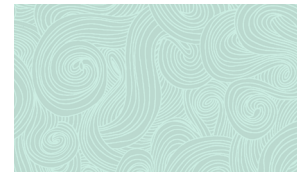
8078-62  
Tossed Mushrooms  
Green-Multi



8080-72  
Border Stripe  
Blue-Multi



1351-Blush  
Just Color!  
Blush



1351-Robin's Egg  
Just Color!  
Robin's Egg