

# Peppered Cottons

by Pepper Corey



Quilt Size: 72" x 84" (1.83m x 2.13m)

Skill Level: Advanced Beginner

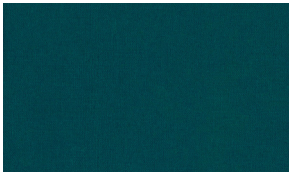
## Lumberjack Forest Quilt

Designed and sold by Charisma Horton of Charisma's Corner

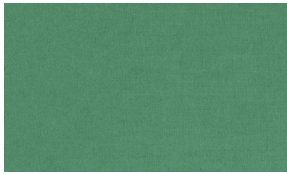
[www.charismascorner.com](http://www.charismascorner.com)

## Lumberjack Forest Quilt Ordering Guide

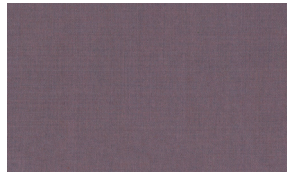
SKU	Yards	Meters	6 Kits	12 Kits
Dark Spruce-48	3/8 yds	0.34m	1 bolt	1 bolt
Jadite-54	3/8 yds	0.34m	1 bolt	1 bolt
Mauve-55	3/8 yds	0.34m	1 bolt	1 bolt
Olive-57	3/8 yds	0.34m	1 bolt	1 bolt
Ember-62	3/8 yds	0.34m	1 bolt	1 bolt
Willow-63	1 1/8 yds	1.03m	1 bolt	2 bolts
Pine-66	3/8 yds	0.34m	1 bolt	1 bolt
Raspberry-73	3/8 yds	0.34m	1 bolt	1 bolt
Deep Purple-83	3/8 yds	0.34m	1 bolt	1 bolt
Flag Blue-86*	2 1/2 yds	2.29m	2 bolts	4 bolts
Cranberry-88	7/8 yds	0.80m	1 bolt	2 bolts
Oyster-35	7/8 yds	0.80m	1 bolt	2 bolts
Milk Chocolate-18	3/8 yds	0.34m	1 bolt	1 bolt
<b>Backing Fabric Option</b>				
Dark Spruce-48	5 1/4 yds	4.80m	4 bolts	7 bolts
* Indicates binding fabric. FQ = 18" x 22" (0.45m x 0.55m) All fabric quantities are based on 15yd bolts unless otherwise indicated.				



Dark Spruce-48  
Peppered Cottons  
Dark Spruce



Jadite-54  
Peppered Cottons  
Jadite



Mauve-55  
Peppered Cottons  
Mauve



Olive-57  
Peppered Cottons  
Olive



Ember-62  
Peppered Cottons  
Ember



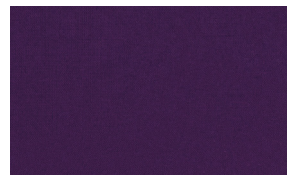
Willow-63  
Peppered Cottons  
Willow



Pine-66  
Peppered Cottons  
Pine



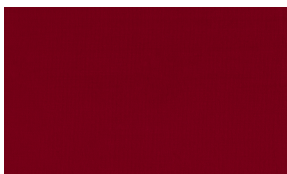
Raspberry-73  
Peppered Cottons  
Raspberry



Deep Purple-83  
Peppered Cottons  
Deep Purple



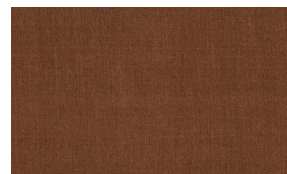
Flag Blue-86\*  
Peppered Cottons  
Flag Blue



Cranberry-88  
Peppered Cottons  
Cranberry



Oyster-35  
Peppered Cottons  
Oyster



Milk Chocolate-18  
Peppered Cottons  
Milk Chocolate