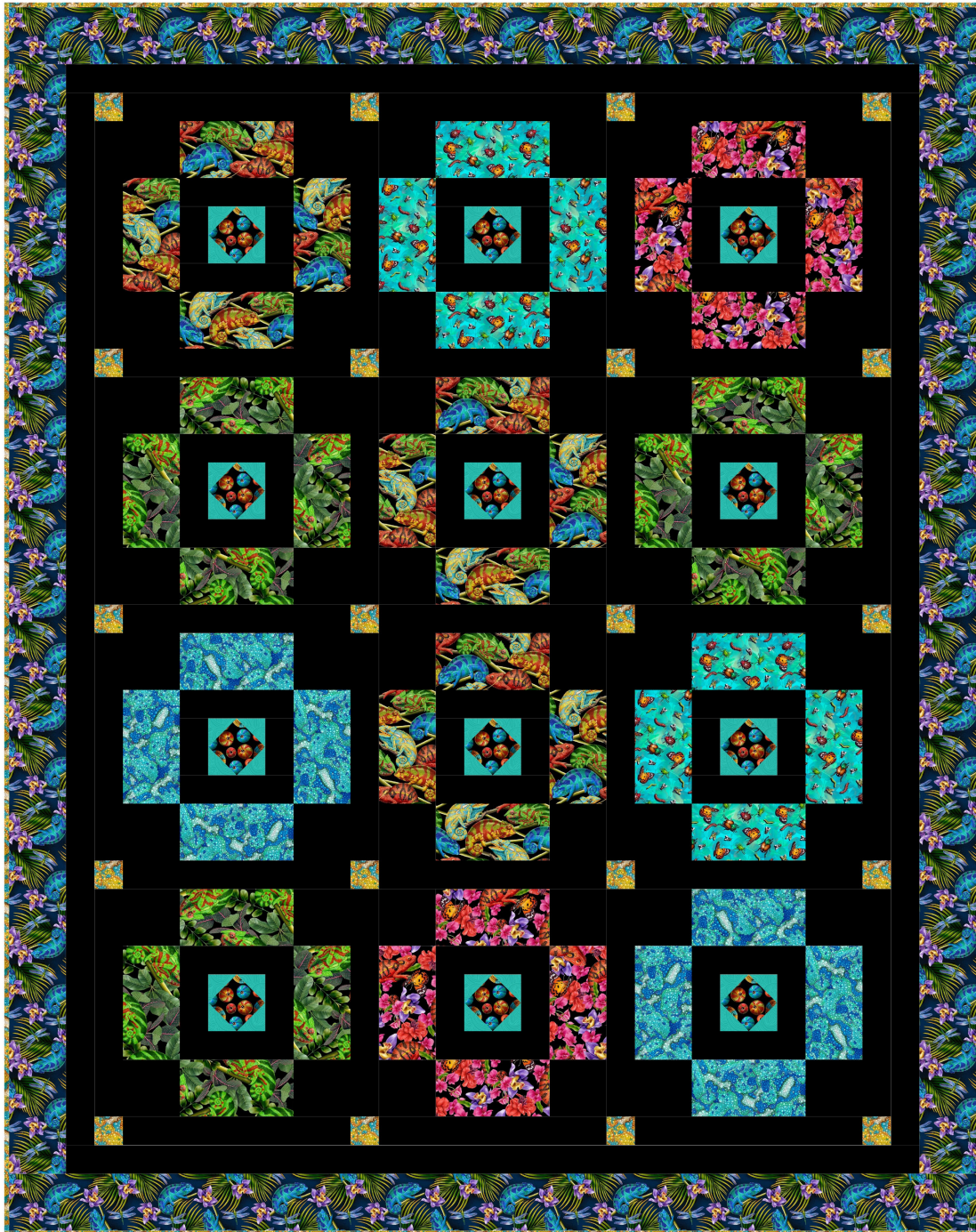


# Stay Magical

by Lori Anzalone



Quilt Size: 51" x 65" (1.30m x 1.65m)

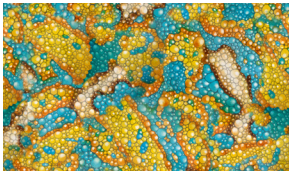
Skill Level: Advanced Beginner

## Great Plains Quilt

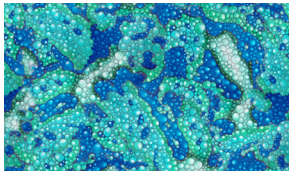
Designed and sold by Leigh Headington of The Sweet Tea Girls  
[www.thesweetteagirls.com](http://www.thesweetteagirls.com)

## Great Plains Quilt Ordering Guide

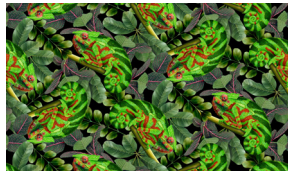
SKU	Yards	Meters	6 Kits	12 Kits
8050-13*	5/8 yds	0.57m	1 bolt	1 bolt
8050-17	1/4 yds	0.23m	1 bolt	1 bolt
8051-66	1/4 yds	0.23m	1 bolt	1 bolt
8052-88	1/4 yds	0.23m	1 bolt	1 bolt
8053-99	1/4 yds	0.23m	1 bolt	1 bolt
8054-17	1/4 yds	0.23m	1 bolt	1 bolt
8055-99	1/4 yds	0.23m	1 bolt	1 bolt
8057-77	7/8 yds	0.80m	1 bolt	1 bolt
Carbon-23 (10-yard bolt)	2 yds	1.83m	2 bolts	3 bolts
1351-Teal	5/8 yds	0.57m	1 bolt	1 bolt
<b>Backing Fabric Option</b>				
8053-99	4 yds	3.66m	2 bolts	4 bolts
<p>* Indicates binding fabric.            FQ = 18" x 22" (0.45m x 0.55m)            All fabric quantities are based on 15yd bolts unless otherwise indicated.</p>				



8050-13\*  
Texture  
Amber



8050-17  
Texture  
Cyan



8051-66  
Camouflage  
Emerald



8052-88  
Chameleons and Orchids  
Rubi



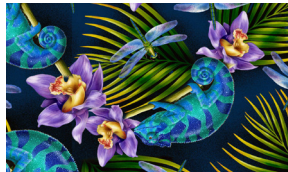
8053-99  
Bulging Dots  
Black



8054-17  
Insects  
Cyan



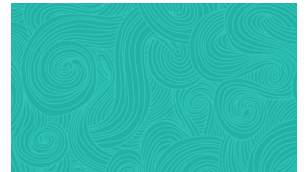
8055-99  
Packed Chameleon  
Black



8057-77  
Chameleons and Dragonflies  
Royal



Carbon-23  
Peppered Cotton  
Carbon



1351-Teal  
Just Color!  
Teal