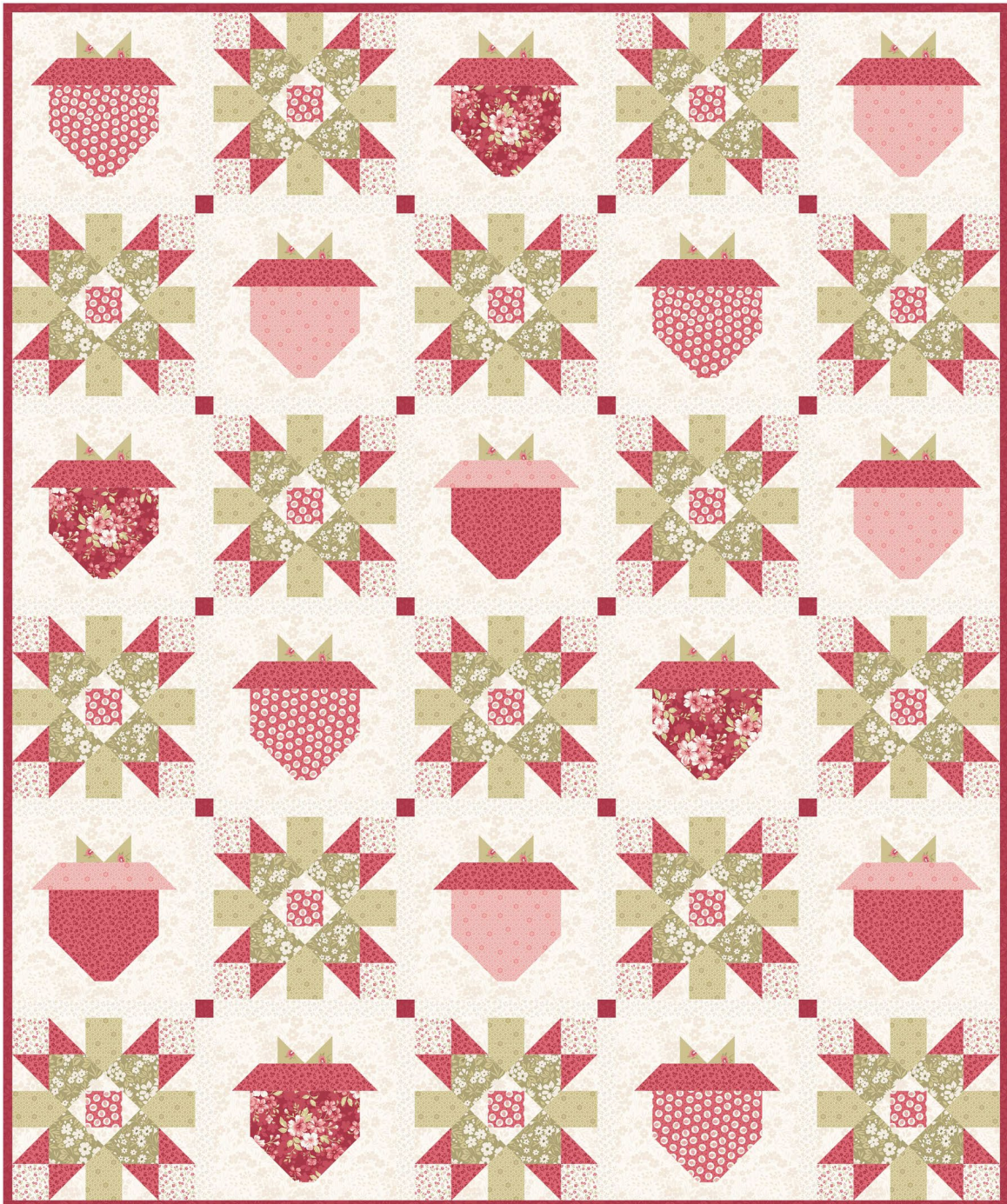


Elizabeth

by Max Tate



Quilt Size: 54" x 65" (1.40m x 1.65m)

Skill Level: Intermediate

Berry Garden Quilt

Designed by Denise Russell of Pieced Brain

www.studiofabrics.net

Berry Garden Quilt Ordering Guide

SKU	Yards	Meters	6 Kits	12 Kits
 8869-81	1/4 yds	0.23m	1 bolt	1 bolt
 8870-81*	5/8 yds	0.57m	1 bolt	1 bolt
 8870-14	2 1/4 yds	2.06m	1 bolt	2 bolts
 8870-61	2/3 yds	0.61m	1 bolt	1 bolt
 8871-61	1/4 yds	0.23m	1 bolt	1 bolt
 8873-81	3/8 yds	0.34m	1 bolt	1 bolt
 8874-22	3/8 yds	0.34m	1 bolt	1 bolt
 8874-61	5/8 yds	0.57m	1 bolt	1 bolt
 8875-81	7/8 yds	0.80m	1 bolt	1 bolt
 8875-41	3/8 yds	0.34m	1 bolt	1 bolt
 8875-14	3/4 yds	0.69m	1 bolt	1 bolt

Backing Fabric Option

8869-41	3 1/2 yds	3.20m	2 bolts	3 bolts
---------	-----------	-------	---------	---------

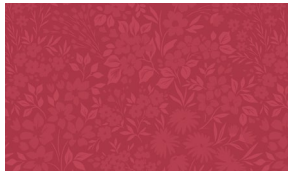
* Indicates binding fabric.

FQ = 18" x 22" (0.45m x 0.55m)

All fabric quantities are based on 15yd bolts unless otherwise indicated.



8869-81
Floral Bouquet Toss
Pomegranate



8870-81*
Floral Allover
Pomegranate



8870-14
Floral Allover
Cream



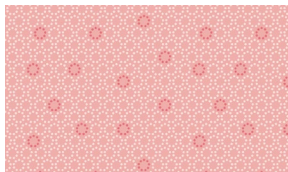
8870-61
Floral Allover
Sage



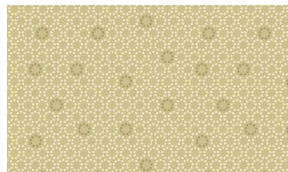
8871-61
Single Floral Toss
Sage



8873-81
Strawberry Toss
Pomegranate



8874-22
Dotted circles
Rose



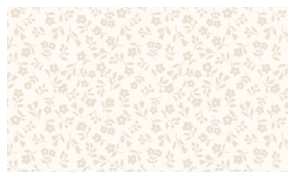
8874-61
Dotted circles
Sage



8875-81
Ditsy Floral
Pomegranate



8875-41
Ditsy Floral
Parchment



8875-14
Ditsy Floral
Cream

Studioe Fabrics

49 West 37th Street - New York, NY 10018 - Tel: 800-294-9495 - Fax: 212-679-4578 - www.studioefabrics.net