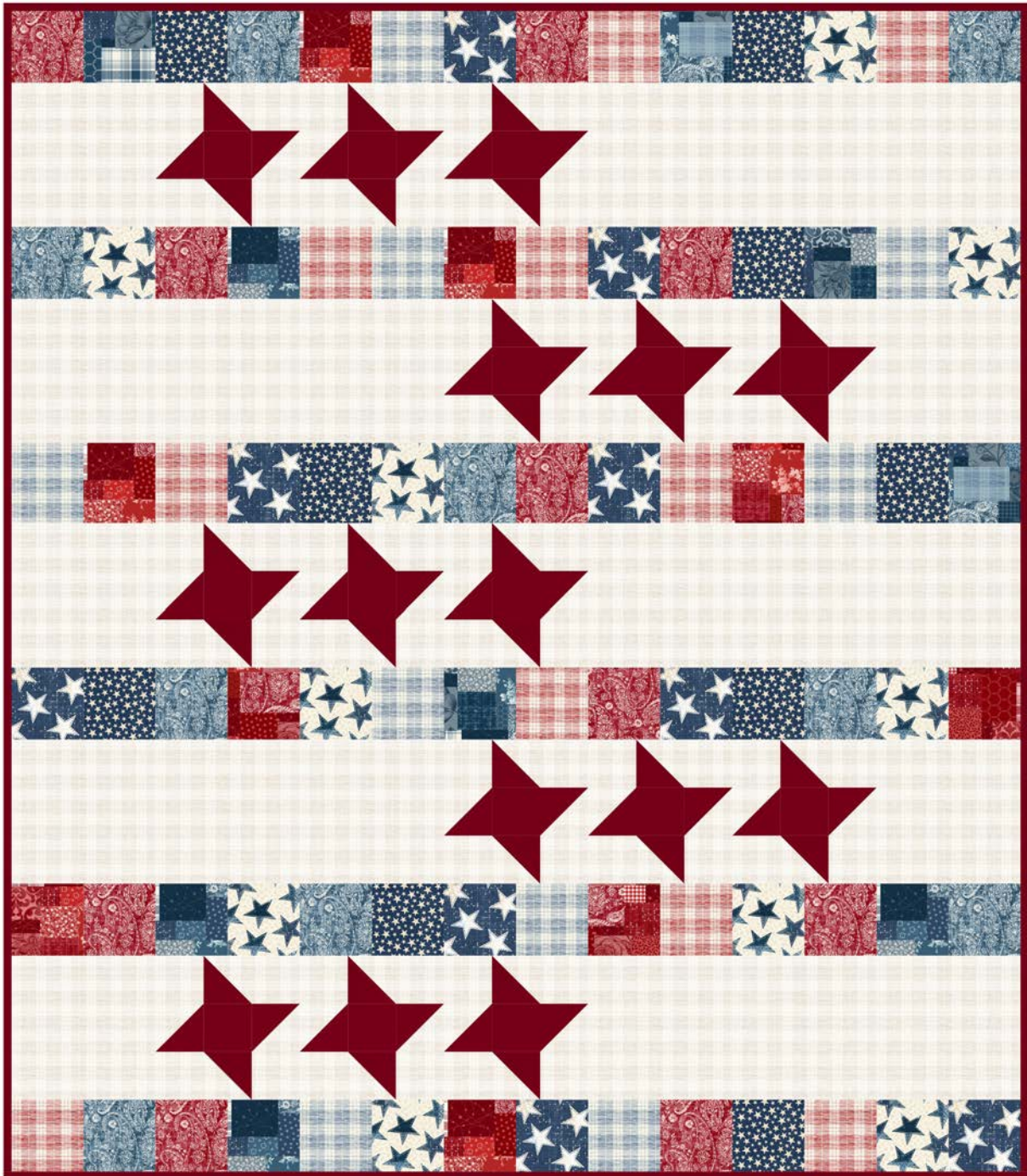


Pieces of America

by Lilac Bee Designs



Quilt Size: 63" x 72" (1.60m x 1.83m)

Skill Level: Advanced Beginner

Salute Quilt

Designed by Tricia Lynn Maloney - Orphan Quilt Designs For Villa Rosa Designs
www.villarosadesigns.com

Salute Quilt Ordering Guide

SKU	Yards	Meters	6 Kits	12 Kits
 8589-73	3/8 yds	0.34m	1 bolt	1 bolt
 8590-82	3/8 yds	0.34m	1 bolt	1 bolt
 8592-73	3/8 yds	0.34m	1 bolt	1 bolt
 8593-17	3/8 yds	0.34m	1 bolt	1 bolt
 8594-73	3/8 yds	0.34m	1 bolt	1 bolt
 8594-82	3/8 yds	0.34m	1 bolt	1 bolt
 8595-14	2 1/2 yds	2.29m	2 bolts	3 bolts
 8595-73	3/8 yds	0.34m	1 bolt	1 bolt
 8595-82	3/8 yds	0.34m	1 bolt	1 bolt
 8596-73	3/8 yds	0.34m	1 bolt	1 bolt
 Cranberry-88* (10yd bolt)	1 1/8 yds	1.03m	1 bolt	2 bolts

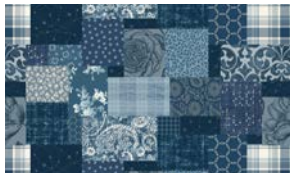
Backing Fabric Option

8595-73	4 1/2 yds	4.11m	2 bolts	4 bolts
---------	-----------	-------	---------	---------

* Indicates binding fabric.

FQ = 18" x 22" (0.45m x 0.55m)

All fabric quantities are based on 15yd bolts unless otherwise indicated.



8589-73
Patch Work
Blue



8590-82
Patch Work
Ruby



8592-73
Big Stars on Blue
Blue



8593-17
Big Stars on Cream
Cream



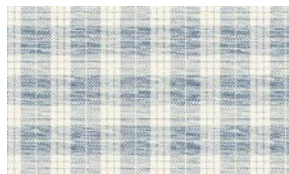
8594-73
Paisley
Blue



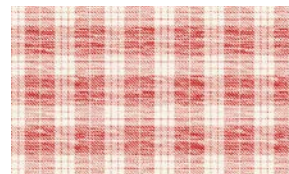
8594-82
Paisley
Ruby



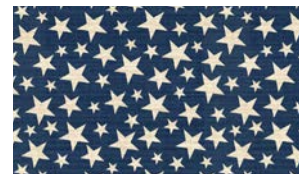
8595-14
Plaid
Cream



8595-73
Plaid
Blue



8595-82
Plaid
Ruby



8596-73
Small Stars
Blue



Cranberry-88*
Peppered Cottons
Cranberry

This pattern calls for 5" squares. Because we are using yardage, there will extra fabric for coordinating projects (pillows!)