

Country Fair

by Nancy Archer



Quilt Size: Throw: 46" x 51" (1.17m x 1.30m)
Pillow (SET of 4): 22" x 22" (55.88cm x 55.88cm)







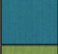
Skill Level: Advanced Beginner

Country Corners Throw Quilt & Pillows (SET of 4)

Designed and sold by Laureen Smith of Tourmaline & Thyme Quilts

www.tourmalinethymequilts.com

Country Corners Throw Quilt & Pillows Ordering Guide

SKU	Yards	Meters	6 Kits	12 Kits
 8204-71	1 1/4 yds	1.14m	1 bolt	2 bolts
 8204-82	3/4 yds	0.69m	1 bolt	1 bolt
 8206-08	1/4 yds	0.23m	1 bolt	1 bolt
 8209-17	5/8 yds	0.57m	1 bolt	1 bolt
 8210-18	1 1/4 yds	1.14m	1 bolt	2 bolts
 8211P-18	2/3 yds	0.61m	1 bolt	1 bolt
 Vanilla-46 (10-yard bolt)	1/2 yds	0.46m	1 bolt	1 bolt
 Lagoon-78* (10-yard bolt)	5/8 yds	0.57m	1 bolt	1 bolt
 Key Lime-68 (10-yard bolt)	1/2 yds	0.46m	1 bolt	1 bolt
Backing Fabric Option				
8208-27	6 1/2 yds	5.94m	3 bolts	6 bolts
<p>* Indicates binding fabric. FQ = 18" x 22" (0.45m x 0.55m) All fabric quantities are based on 15yd bolts unless otherwise indicated.</p>				



8203-12
Farmers Market
Aqua/Multi



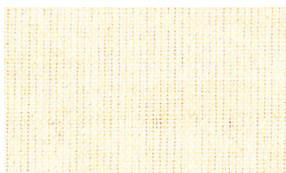
8204-71
Texture
Blue



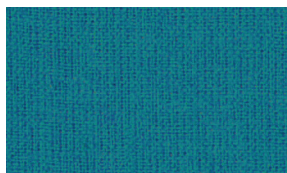
8209-17
Sheeps and Hens
Aqua/Multi



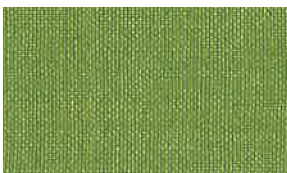
8210-18
Border Stripe
Multi



Vanilla-46
Peppered Cottons
Vanilla



Lagoon-78*
Peppered Cottons
Lagoon



Key Lime-68
Peppered Cottons
Key Lime



8211P-18
Panel
Aqua/Multi