

Whispers of Pond Life

by Yu Me Design & Developemnt



Quilt Size: 44" x 62" (1.12 x 1.57m)






Skill Level: Advanced Beginner

Farmer's Daybreak Throw

Designed by Farmer's Daughters Quilts

www.fdqilts.com

Farmer's Daybreak Throw Ordering Guide

SKU	Yards	Meters	6 Kits	12 Kits
 8752-22	1/2 yds	0.46m	1 bolt	1 bolt
 8754-11	3/8 yds	0.34m	1 bolt	1 bolt
 8755-22	3/8 yds	0.34m	1 bolt	1 bolt
 8756-77*	1 1/4 yds	1.14m	1 bolt	2 bolts
 8761P-77 (8yd bolt)	2/3 yds	0.61m	1 bolt	2 bolts

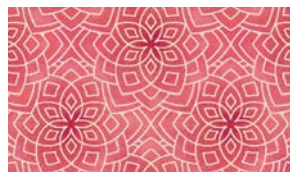
Backing Fabric Option

8757-11	4 yds	3.66m	2 bolts	4 bolts
---------	-------	-------	---------	---------

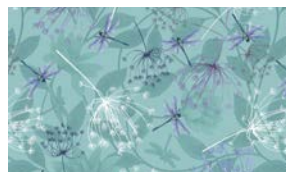
* Indicates binding fabric.

FQ = 18" x 22" (0.45m x 0.55m)

All fabric quantities are based on 15yd bolts unless otherwise indicated.



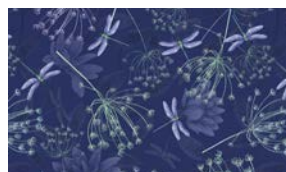
8752-22
Geometric
Pink



8754-11
Queen Anne's Lace
Mist Blue



8755-22
Lotus Flowers
Blush



8756-77*
Queen Anne's Lace
Sapphire Blue



8761P-77
Panel
Sapphire Blue