

Free Project
NOT FOR RESALE

QUILT 1

Buttermilk Farmstead



Featuring fabrics from the Buttermilk Farmstead collection by Grace Popp for **STUDIO·C·fabrics**

Fabric Requirements

(A) 5331P-99	1 panel	(J) Peppered Cottons-35	7/8 yard
(B) 5323-99	1/8 yard	Backing 5319-39	2-3/4 yards
(C) 5327-99	1/8 yard		
(D) 5326-93	1/8 yard	*Includes Binding.	
(E) 5320-90	1/8 yard		
(F) 5328-99	1/8 yard		
(G) 5329-91	1/8 yard		
(H) Peppered Cottons-98*	1/2 yard		
(I) 5325-99	5/8 yard		

Additional Supplies Needed

Air Lite batting: 47" x 61"
Sewing and Quilting thread
Sewing and Quilting supplies

Quilt size: 38-1/2" x 52-1/2"
Skill Level: Advanced Beginner
Quilt designed by Denise Russell.

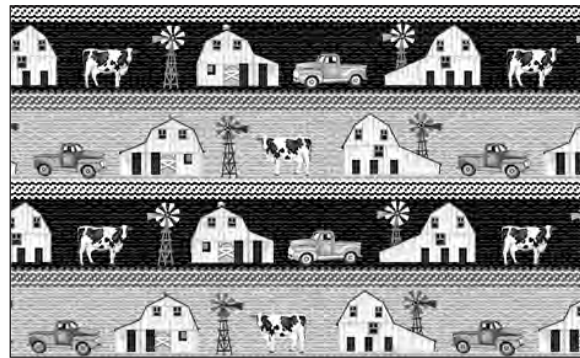
Fabrics in the Collection



5331P-99 30" Panel - Black



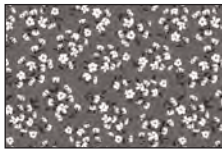
5330-99 9" Blocks - Black



5324-99 Farm Stripe - Black



5319-39 Tossed Farm Icons - Ecu



5320-90 Cotton Plant Charcoal



5321-39 Wildflowers Ecu



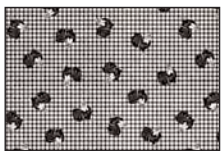
5322-39 Cows Ecu



5323-99 Gingham Silhouette Animals - Black



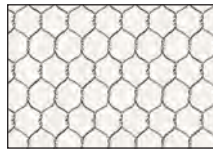
5325-99 Words Black



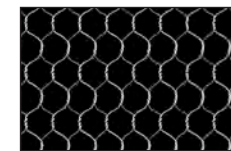
5326-93 Gingham Chickens on Charcoal/Ecu



5327-99 Milk Bottles Black



5328-39 Chicken Wire Ecu



5328-99 Chicken Wire Black

Selected fabrics from the Peppered Cottons collection



Oyster - 35



Deep Space - 98



5329-91 Landscape Farm - Silver

Cutting

Cutting Instructions

Please note: All strips are cut across the width of the fabric (WOF) from selvage to selvage unless otherwise noted. (WOF = Width of Fabric, LOF = Length of Fabric).

Fabric A (5331P-99 Buttermilk Farmstead Panel - Black), trim:

*(1) 24-1/2" x 42-1/2" rectangle.

Fabric B (5323-99 Gingham Silhouette Animals – Black), cut:

*(1) 2-1/4" x WOF strip. Sub-cut nine 2-1/4" squares.

Fabric C (5327-99 Milk Bottles – Black), cut:

*(1) 2-1/4" x WOF strip. Sub-cut five 2-1/4" squares.

Fabric D (5326-93 Chickens on Gingham - Charcoal/Ecru)

Fabric E (5320-90 Cotton Plant – Charcoal)

Fabric F (5328-99 Chicken Wire – Black)

From each, cut:

*(1) 2-1/4" x WOF strip. Sub-cut six 2-1/4" squares.

Fabric G (5329-91 Landscape Farm – Silver), cut:

*(1) 2-1/4" x WOF strip. Sub-cut four 2-1/4" squares.

Fabric H (Peppered Cottons-98 Deep Space), cut:

*(5) 2-1/2" x WOF strips for binding.

Fabric I (5325-99 Words – Black), cut:

*(4) 3-1/2" x WOF strips for border 4.

Fabric J (Peppered Cottons-35 Oyster), cut:

*(4) 2-1/8" x WOF strips. Sub-cut seventy-two 2-1/8" squares: cut once diagonally.

*(4) 1" x WOF strips for border 1.

*(2) 1-1/2" x WOF strips for border 2 (top/bottom strips only).

*(3) 1" x WOF strips for border 3 (side strips only).

*(5) 1-1/4" x WOF strips for border 5.

Block Assembly

1. Fold one 2-1/4" Fabric B square in half with right sides together. Mark the center on opposite sides of the square. Fold two Fabric J triangles with wrong sides together and crease to mark the center. Nesting the centers, sew the Fabric J triangles to opposite sides of the Fabric B square. Press the seams open. In the same manner, sew two more Fabric J triangles to the other sides of the same square (*figure 1*). Press open and trim ears. Repeat to make nine 3" patches.



Figure 1 – Make 9.

Sewing

2. Repeat step 1 with the remaining Fabric J triangles and the 2-1/4" Fabrics C, D, E, F, and G squares to make a total of twenty-seven 3" patches (*figure 2*).



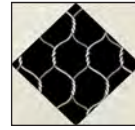
Make 5.



Make 6.



Make 6.
Figure 2



Make 6.



Make 4.

Quilt Top Assembly

(Follow the quilt diagram and photograph while assembling the quilt top.)

3. For border 1, join the four 1" Fabric J strips border strips together end to end using diagonal seams. Cut two strips 42-1/2" long and sew them to each side of the panel. Press the seams toward the border strips. Measure the width of the quilt top through the center. Cut two border strips that length and sew one to the top and one to the bottom. Press the seams toward the borders. The quilt measures 25-1/2" x 43-1/2" up to here.

4. For border 2 and referring to the quilt photo for block placement, arrange eighteen blocks for each side of the quilt. Sew blocks together and sew one border strip to each side of the quilt center. Press the seam toward the quilt center.

5. Sew the two 1-1/2" Fabric J strips to the top and one to the bottom of the quilt center, trim the extra length, and press the seams toward the borders to finish border 2.

6. For border 3, sew the three 1" Fabric J strips together end to end using diagonal seams. Measure the vertical length of the quilt top through the center and cut two border strips that length. Sew one strip to each side of the quilt top. Press the seams toward the borders.

7. For border 4, sew the four 3-1/2" Fabric I border strips together end to end using diagonal seams. Measure the vertical length of the quilt top through the center and cut two border strips that length. Sew one strip to each side of the quilt top. Measure the width of the quilt top through the center. Cut two border strips that length and sew one to the top and one to the bottom. Press the seams toward the borders.

8. Repeat step 7 with the five 1-1/4" Fabric J strips to make and add border 5.

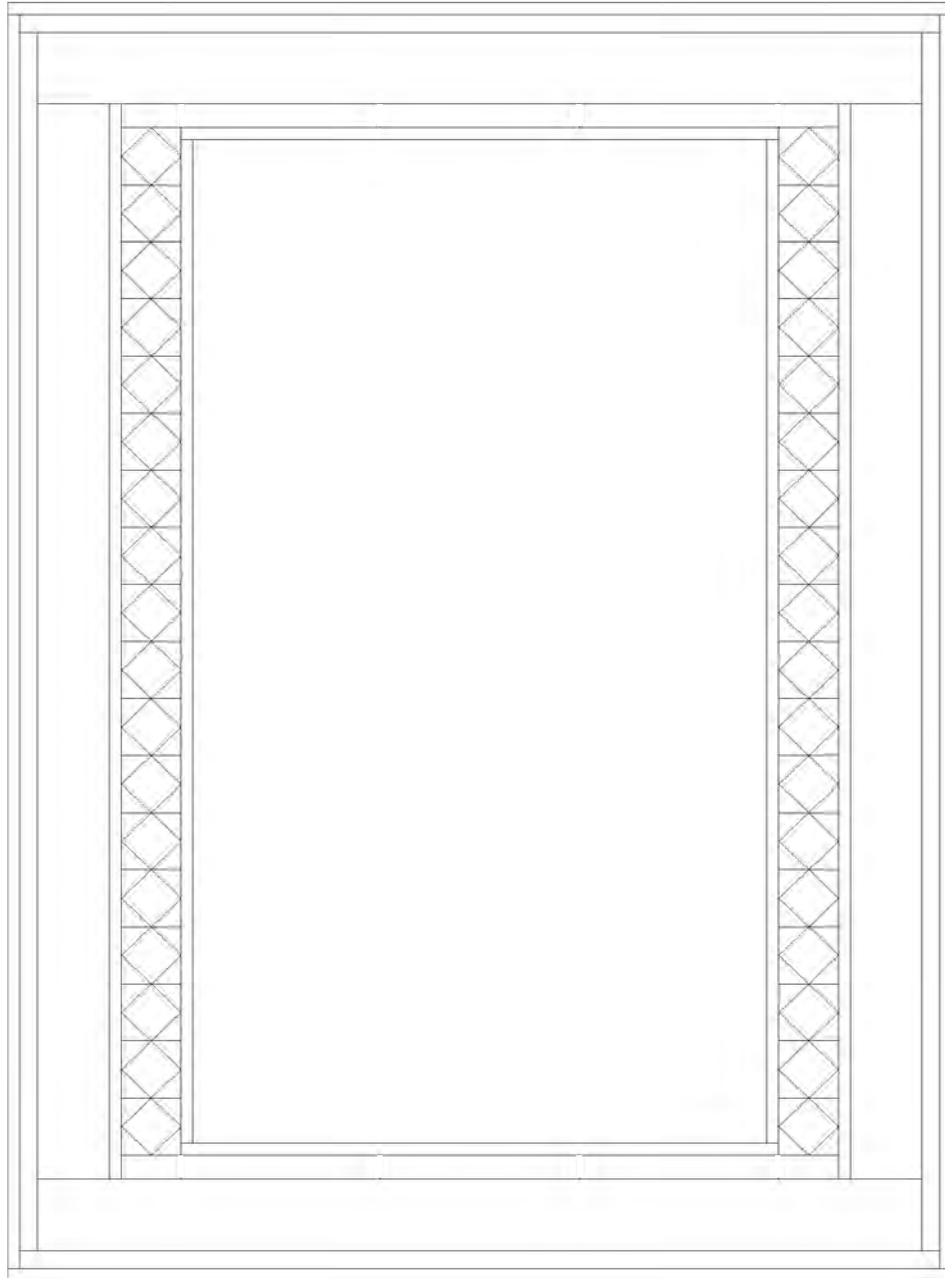
Layering, Quilting, and Finishing

9. Create a quilt sandwich with the batting between the quilt top and the backing. Pin or baste layers together, mark quilting design, and quilt by hand or machine. When quilting is complete, remove pins or basting and trim batting and backing even with raw edges of the quilt top.

Binding

10. Join the five 2-1/2" Fabric H binding strips together end to end using a diagonal seam to make one long strip. Fold in half lengthwise and press. Sew binding to the edges of the quilt top, mitering corners, and overlapping ends. Fold binding to the back of the quilt and stitch it in place by hand to finish.

Diagram



©2020 Studio e Fabrics®

Every effort has been made to ensure that all projects are error free. All the information is presented in good faith; however, no warranty can be given nor results guaranteed as we have no control over the execution of instructions. Therefore, we assume no responsibility for the use of this information or damages that may occur as a result. When errors are brought to our attention, we make every effort to correct and post a revision as soon as possible. Please make sure to check www.studioefabrics.com for pattern updates prior to starting the project. We also recommend that you test the project prior to cutting for kits. Finally, all free projects are intended to remain free to you and are not for resale.