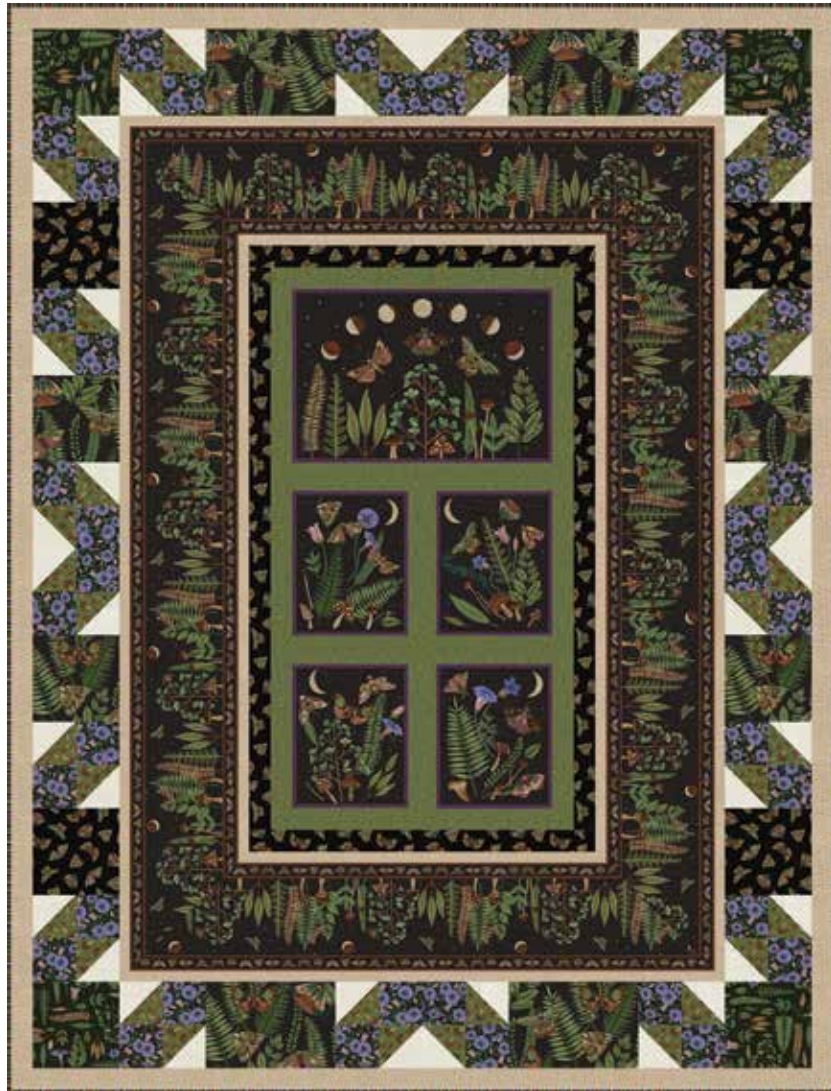


Dark Forest

• A Free Project Sheet •
• NOT FOR RESALE •

QUILT 1



Featuring fabrics from the **Dark Forest** collection by **Melissa Wang** for **STUDIO e fabrics**

Fabric Requirements

(A) 6280P-39	1 panel
(B) 6274-39	5/8 yard
(C) Flax-7**	7/8 yard
(D) 6272-39	1 7/8 yards
(E) 6273-69	1/4 yard
(F) 6271-39	1/2 yard
(G) 6276-59	1/2 yard
(H) 6275-66	1/3 yard

(I) Oyster-35**	1/3 yard
(J) 6277-36	5/8 yard*
Backing	
6278-39	4 3/4 yards

* Includes Binding
** Peppered Cottons Collection

Additional Supplies Needed

Batting 65" x 83" (Recommended:
Air Lite® Colour Me 100% Cotton)
Piecing and sewing thread
Quilting and sewing supplies

Quilt designed by Heidi Pridemore
Finished Quilt Size 57" x 75"
Skill Level: Advanced Beginner

Please check our website for pattern updates before starting this project.

Fabrics in the Collection



Moths and Fern
Dark Chocolate – 6271-39



Border Stripe
Dark Chocolate – 6272-39



Leaves
Dark Green – 6273-69



Tossed Moths
Dark Chocolate – 6274-39



Mushrooms
Dark Rust – 6275-38



Mushrooms
Green – 6275-66



Morning Glories
Periwinkle – 6276-59



Stripe
Multi – 6277-36



Moon Phases
Dark Chocolate – 6278-39



Tone-on-Tone Leaves
Green – 6279-66



24-inch Panel
Dark Chocolate – 6280P-39

Select Fabrics from
Peppered Cottons



Flax
Flax-7



Oyster
Oyster-35

Cutting

Cutting Instructions

Please note: All strips are cut across the width of fabric (WOF) from selvage to selvage edge unless otherwise noted.

WOF= Width of Fabric • LOF = Length of Fabric

Fabric A (6280P-39 24-inch Panel – Dark Chocolate):

- Fussy cut (1) 21 ½" x 39 ½" rectangle, centered on the panel.

Fabric B (6274-39 Tossed Moths – Dark Chocolate), cut:

- (1) 6 ½" x WOF strip, sub-cut (4) 6 ½" squares.
- (2) 2 ½" x 39 ½" WOF strips.
- (2) 2 ½" x 25 ½" WOF strips.

Fabric C (Flax-7 Peppered Cottons – Flax), cut:

- (3) 2" x WOF strips. Sew the strips together end to end with diagonal seams and cut (2) 2" x 57 ½" strips.
- (4) 2" x WOF strips. Sew the strips together end to end with diagonal seams and cut (2) 2" x 72 ½" strips.
- (4) 1 ¼" x 42 ½" WOF strips, piece as needed.
- (2) 1 ¼" x 26" WOF strips.
- (3) 1 ¼" x WOF strips. Sew the strips together end to end with diagonal seams and cut (2) 1 ¼" x 59" strips.

Fabric D (6272-39 Border Stripe – Dark Chocolate), cut:

- (2) 8" x 63" LOF strips.
- (2) 8" x 45" LOF strips.

Fabric E (6273-69 Leaves – Dark Green), cut:

- (1) 6 ½" x WOF strip, sub-cut (4) 6 ½" squares.

Fabric F (6271-39 Moths and Fern – Dark Chocolate), cut:

- (1) 6 ½" x WOF strip, sub-cut (4) 6 ½" squares.
- (1) 6 ½" x WOF strip, sub-cut (4) 6 ½" x 9 ½" strips.

Fabric G (6276-59 Morning Glories – Periwinkle), cut:

- (4) 3 ½" x WOF strips, sub-cut (40) 3 ½" squares.

Fabric H (6275-66 Mushrooms – Green), cut:

- (2) 3 ⅞" x WOF strips, sub-cut (20) 3 ⅞" squares.

Fabric I (Oyster-35 Peppered Cottons – Oyster), cut:

- (2) 3 ⅞" x WOF strips, sub-cut (20) 3 ⅞" squares.

Fabric J (6277-36 Stripe – Multi), cut:

- (7) 2 ½" x WOF strips for the binding.

Backing (6278-39 Moon Phases – Dark Chocolate), cut:

- (2) 83" x WOF strips. Sew the strips together and trim to 65" x 83" to make the back.

Sewing

Sew using a $\frac{1}{4}$ " seam allowance with right sides together (RST) unless otherwise indicated. Always press towards the darker fabric while assembling, unless otherwise noted by the arrows.

Block Assembly

Note: The arrows in figures represent the fabric print direction. Pay attention to the fabric and unit orientations when assembling the various components.

1. Sew (1) $2\frac{1}{2}$ " x $39\frac{1}{2}$ " Fabric B strip to each side of the $21\frac{1}{2}$ " x $39\frac{1}{2}$ " Fabric A rectangle. Sew (1) $2\frac{1}{2}$ " x $25\frac{1}{2}$ " Fabric B strip to the top and to the bottom of the Fabric A rectangle to make the Center Block (Fig. 1). **Trim the block to measure $24\frac{1}{2}$ " x $42\frac{1}{2}$ ".**

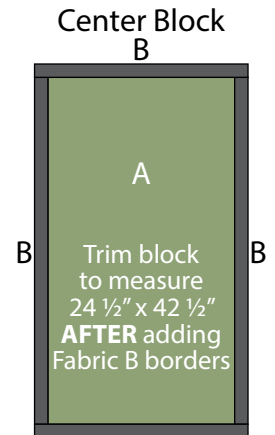


Fig. 1 B

2. Place (1) $3\frac{7}{8}$ " Fabric H square on top of (1) $3\frac{7}{8}$ " Fabric I square, right sides together. Draw a line across the diagonal of the top square (Fig. 2). Sew $\frac{1}{4}$ " away from each side of the drawn diagonal line (Fig. 2). Cut the (2) squares apart on the drawn diagonal line (Fig. 3) to make (2) half-square triangles. Trim the half-square triangles to measure $3\frac{1}{2}$ " square to make (2) Unit 1 squares (Fig. 4). Repeat to make (40) Unit 1 squares total.

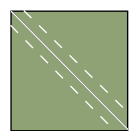


Fig. 2

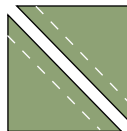


Fig. 3

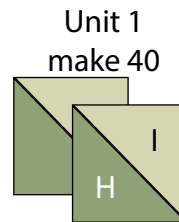


Fig. 4

3. Sew (1) $3\frac{1}{2}$ " Fabric G square to the left side of (1) Unit 1 square to make the top row. Sew (1) Unit 1 square to the left side of (1) $3\frac{1}{2}$ " Fabric G square to make the bottom row. Sew together the (2) rows lengthwise to make (1) $6\frac{1}{2}$ " Unit 2 square (Fig. 5). Repeat to make (20) Unit 2 squares total.

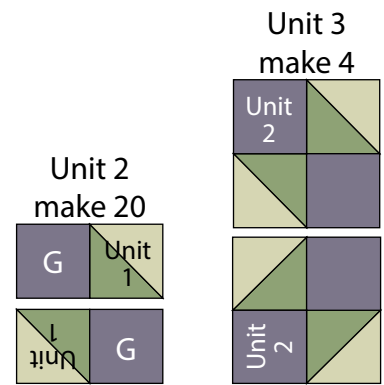


Fig. 5

4. Sew together (2) Unit 2 squares to make (1) Unit 3 rectangle (Fig. 6). Repeat to make (4) Unit 3 rectangles total.

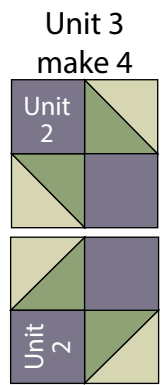


Fig. 6

5. Refer to Figure 7 and sew together (4) Unit 2 squares, (2) 6 ½" Fabric B squares, (2) 6 ½" Fabric F squares and (1) Unit 3 rectangle to make the Left Side Border.

Left Side
Border



Fig. 7

6. Refer to Figure 8 and sew together (4) Unit 2 squares, (2) 6 ½" Fabric B squares, (2) 6 ½" Fabric F squares and (1) Unit 3 rectangle to make the Right Side Border.

Right Side
Border



Fig. 8

7. Refer to Figure 9 and sew together (2) 6 ½" Fabric E squares, (2) Unit 2 squares, (2) 6 ½" x 9 ½" Fabric F strips and (1) Unit 3 rectangle to make the Top Border.

Top Border



Fig. 9

8. Refer to Figure 10 and sew together (2) 6 ½" Fabric E squares, (2) Unit 2 squares, (2) 6 ½" x 9 ½" Fabric F strips and (1) Unit 3 rectangle to make the Bottom Border.

Bottom Border



Fig. 10

Quilt Top Assembly

(Follow the Quilt Layout while assembling the quilt top.)

9. Sew (1) 1 ¼" x 42 ½" Fabric C strip to each side of the Center Block. Sew (1) 1 ¼" x 26" Fabric C strip to the top and to the bottom of the Center Block.

10. Center (1) 8" x 63" Fabric D strip on (1) side of the Center Block and pin in place. Start sewing the strip a ¼" from the top edge of the block and stop a ¼" from the bottom edge. **DO NOT TRIM THE EXCESS.** Repeat with the opposite side.

11. Repeat Step 10 to sew (1) 8" x 45" Fabric D strip to the top and to the bottom of the Center Block, making sure to stop and start $\frac{1}{4}$ " away from each end of the block. To miter each corner, fold the Center Block on a diagonal, wrong side together. This should line up the strips from adjacent sides (Fig. 11).

12. Starting at the sewn seam (represented by the arrow in Figure 11), draw a 45-degree line to the edge of the fabric. Sew on the drawn line. Trim the excess fabric leaving a $\frac{1}{4}$ " seam. Repeat this step with the remaining corners.

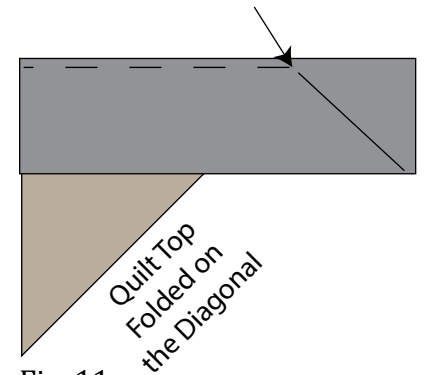


Fig. 11

13. Sew (1) 1 $\frac{1}{4}$ " x 59" Fabric C strip to each side of the Center Block. Sew (1) 1 $\frac{1}{4}$ " x 42 $\frac{1}{2}$ " Fabric C strip to the top and to the bottom of the Center Block.

14. Sew the Left Side Border and Right Side Border to the left and right side of the Center Block.

15. Sew the Top Border and Bottom Border to the top and to the bottom of the Center Block.

16. Sew (1) 2" x 72 $\frac{1}{2}$ " Fabric C strip to each side of the Center Block. Sew (1) 2" x 57 $\frac{1}{2}$ " Fabric C strip to the top and to the bottom of the Center Block to make the quilt top.

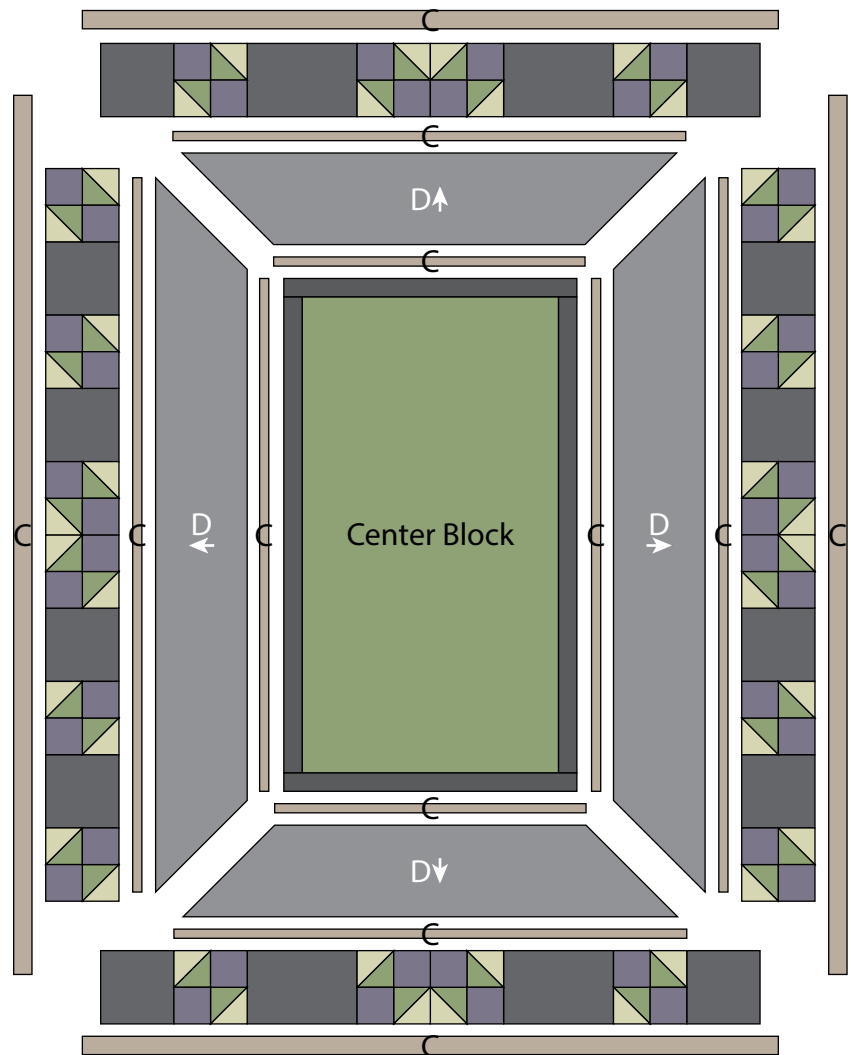
Layering, Quilting and Finishing

17. Press the quilt top and 65" x 83" backing well. Layer backing (wrong side up), batting, pressed quilt top (right side up) and baste. Quilt as desired and trim excess batting and backing when quilting is complete.

Binding

18. Cut the ends of the (7) Fabric J binding strips at a 45-degree angle and sew end to end to make (1) continuous piece of binding. Fold in half lengthwise and press wrong sides together.

19. Sew the binding to the front of the quilt, raw edges together. Turn the folded edge to the back, and hand stitch in place.



Quilt Layout

Every effort has been made to ensure that all projects are error free. All the information is presented in good faith, however no warranty can be given nor results guaranteed as we have no control over the execution of instructions. Therefore, we assume no responsibility for the use of this information or damages that may occur as a result. When errors are brought to our attention, we make every effort to correct and post a revision as soon as possible. Please make sure to check www.studioefabrics.net for pattern updates prior to starting the project. We also recommend that you test the project prior to cutting for kits. Finally, all free projects are intended to remain free to you and are not for resale.