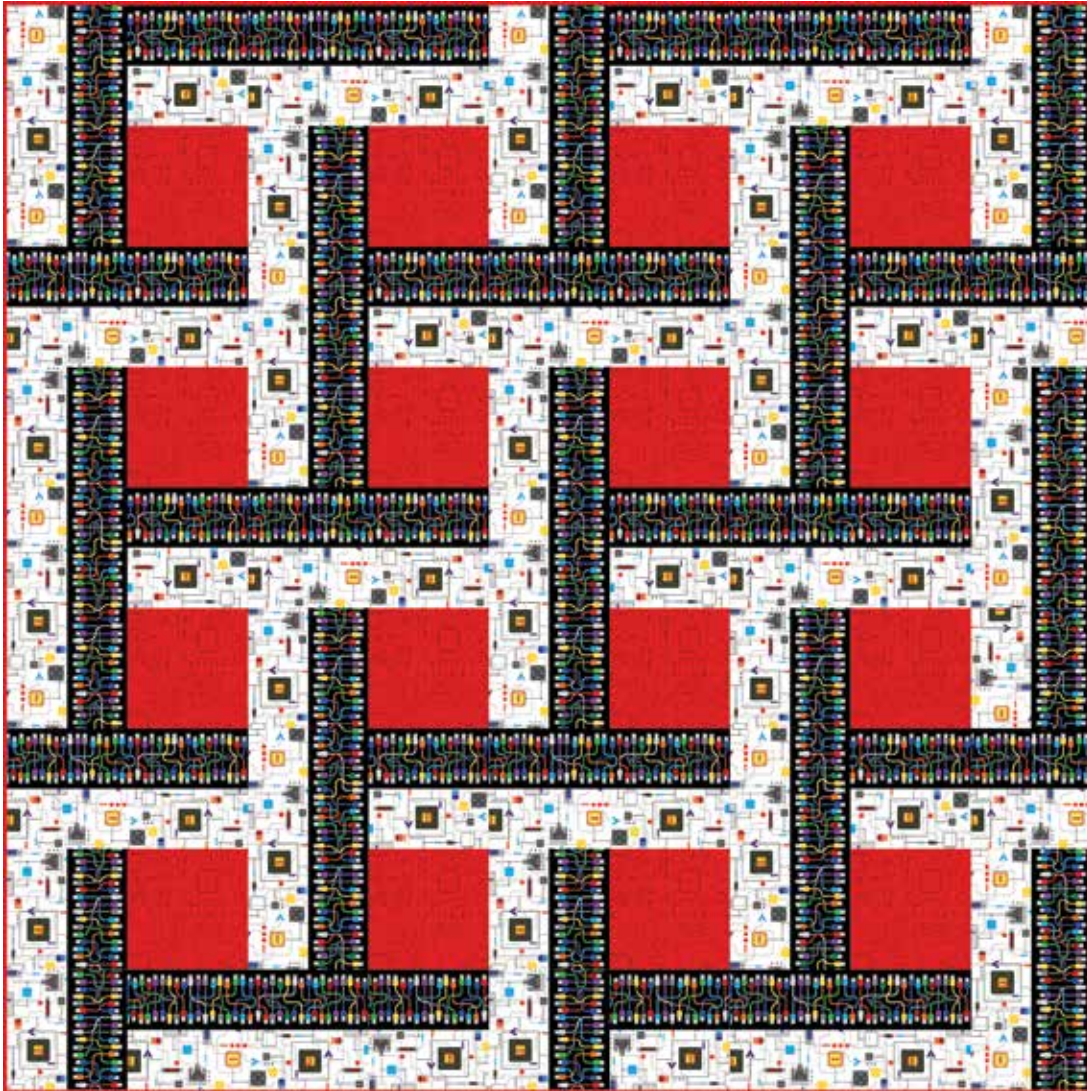


A Free Project Sheet
NOT FOR RESALE

Data Point

QUILT 2



Featuring fabrics from the **Data Point** collection by **Judy Gauthier** for **STUDIO e fabrics**

Fabric Requirements

(A) 6867-88 1 5/8 yards*
 (B) 6869-96 4 3/4 yards
 Backing
 6870-01 4 1/2 yards

* Includes Binding

Additional Supplies Needed

Batting 80" x 80" (Recommended:
 Air Lite® Colour Me 100% Cotton)
 Piecing and sewing thread
 Quilting and sewing supplies

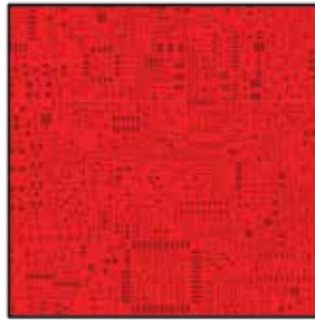
Quilt designed by Judy Gauthier
 Finished Quilt Size 72" x 72"
 Skill Level: Advanced Beginner

Please check our website for pattern updates before starting this project.

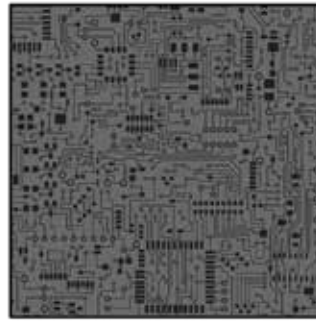
Fabrics in the Collection



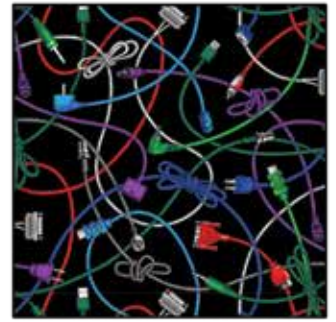
Computer Parts
Black/Multi - 6866-96



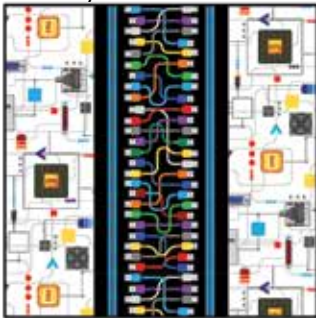
Computer Circuits
Red - 6867-88



Computer Circuits
Charcoal - 6867-99



Electrical Cables
Black/Multi - 6868-96



Cables Border
Black/Multi - 6869-96



Computer Languages
White - 6870-01



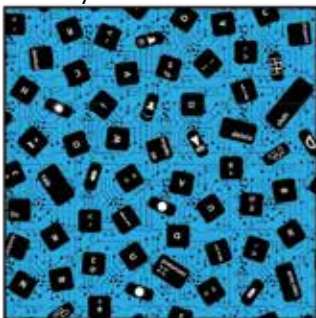
Retro Floppy Disks
White - 6871-01



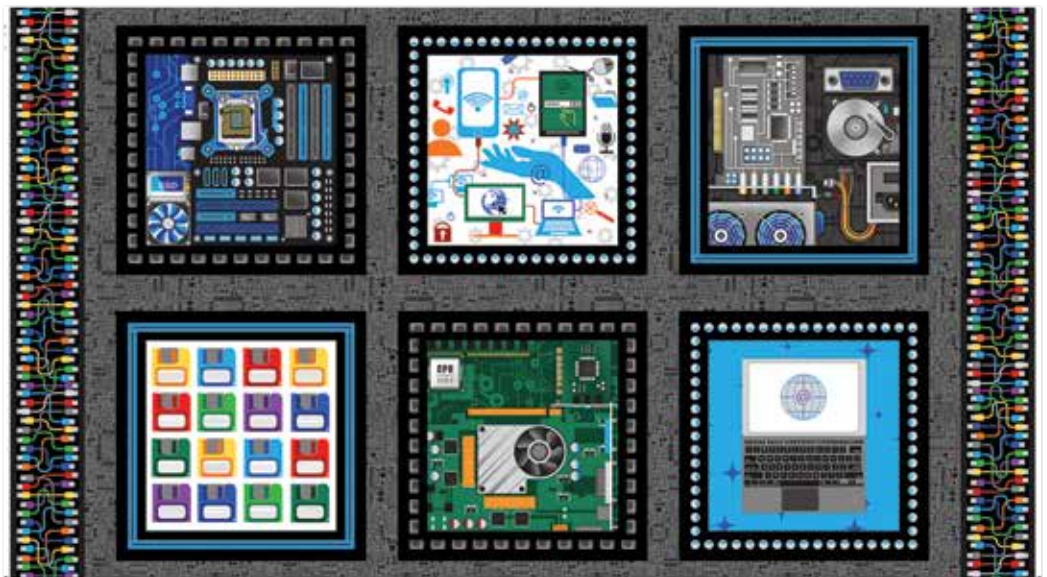
Coding Type
Black/Multi - 6872-96



Cloud
Blue/Multi - 6873-16



Computer Keys
Blue - 6874-70



10.5-Inch Computer Block
Black/Multi - 6875-96

Cutting

Cutting Instructions

Please note: All strips are cut across the width of fabric (WOF) from selvage to selvage edge unless otherwise noted.

WOF= Width of Fabric • LOF = Length of Fabric

Fabric A (6867-88 Computer Circuits – Red), cut:

- Fussy cut (4) 8 ½" x WOF strips, sub-cut (16) 8 ½" squares.
- (8) 2 ½" x WOF strips for the binding.

Fabric B (6869-96 Cables Border – Black/Multi), fussy cut:

- (21) 16 ½" x 4 ½" strips, each centered on black strips.
- (23) 4 ½" x 8 ½" strips, each centered on black strips.
- (21) 16 ½" x 4 ½" strips, each centered on white strips.
- (23) 4 ½" x 8 ½" strips, each centered on white strips.

Backing (6870-01 Computer Languages – White), cut:

- (2) 80" x WOF strips. Sew the strips together and trim to 80" x 80" to make the back.

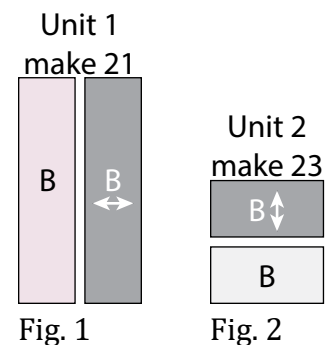
Sewing

Sew using a ¼" seam allowance with right sides together (RST) unless otherwise indicated. Always press towards the darker fabric while assembling, unless otherwise noted by the arrows.

Block Assembly

Note: The arrows in figures represent the fabric print direction. Pay attention to the fabric and unit orientations when assembling the various components.

1. Sew 4 ½" x 16 ½" Fabric B (white) strip to the left side of (1) 4 ½" x 16 ½" Fabric B (black) strip lengthwise to make (1) Unit 1 strip (Fig. 1). Repeat to make (21) Unit 1 strips total.



2. Sew (1) 4 ½" x 8 ½" Fabric B (black) strip to the top of (1) 4 ½" x 8 ½" Fabric B (white) strip lengthwise to make (1) 8 ½" Unit 2 square (Fig. 2). Repeat to make (23) Unit 2 squares total.

3. Sew (1) Unit 2 square to the top of (1) 8 ½" Fabric A square. Sew (1) Unit 1 strip to the left side of the newly sewn strip lengthwise to make (1) 16 ½" Block One square (Fig. 3). Repeat to make (8) Block One squares total.

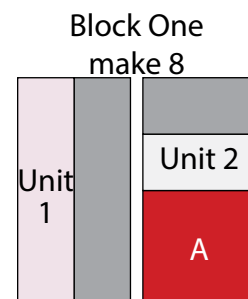


Fig. 3

4. Sew (1) Unit 2 square to the left side of (1) 8 ½" Fabric A square. Sew (1) Unit 1 strip to the top of the newly sewn strip lengthwise to make (1) 16 ½" Block Two square (Fig. 4). Repeat to make (8) Block Two squares total.

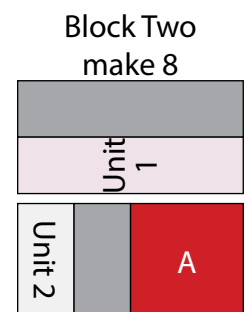


Fig. 4

5. Sew together (2) Block One squares and (2) Block Two squares alternating them from left to right. Sew (1) Unit 1 strip to the right side of the newly sewn strip to make Row One (Fig. 5).

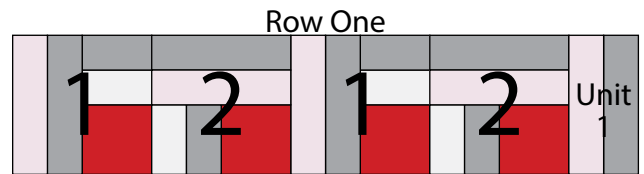


Fig. 5

6. Sew together (4) Block Two squares and (4) Block One squares into a 2 x 4 matrix (Fig. 6). Sew (1) Unit 2 square to the top and to the bottom of (1) Unit 1 strip (Fig. 6). Sew the newly sewn strip to the right end of the 2 x 4 matrix to make Row Two (Fig. 6).

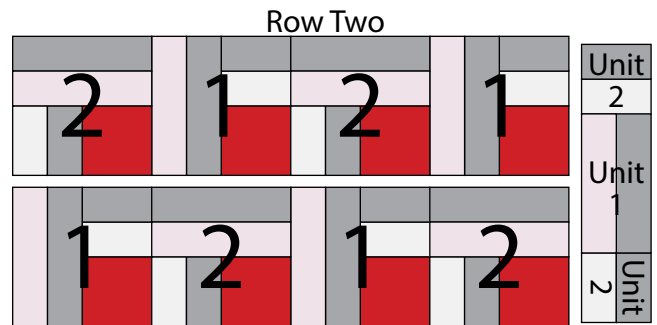


Fig. 6

7. Sew together (2) Block Two squares and (2) Block One squares, alternating them from left to right, to make the top row (Fig. 7).

8. Sew together (1) Unit 2 square, (1) Unit 1 strip, (3) Unit 2 squares and (1) Unit 1 strip, in that order from left to right, to make the bottom row (Fig. 7).

9. Sew (1) Unit 2 square to the top of (1) Unit 1 strip (Fig. 7).

10. Sew together the (2) rows from Steps 7-8 lengthwise. Sew the strip from Step 9 to the right side of the newly sewn strip to make Row Three (Fig. 7).

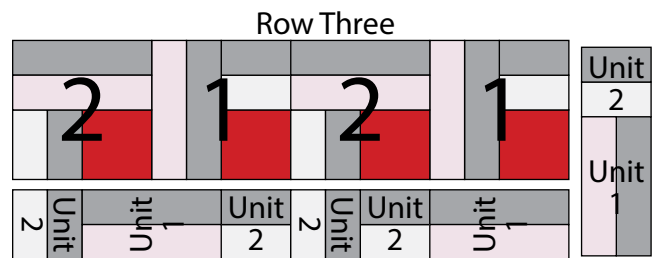


Fig. 7

Quilt Top Assembly

(Follow the Quilt Layout while assembling the quilt top.)

11. Sew together Row One, Row Two and Row Three, in that order from top to bottom, to make the quilt top.

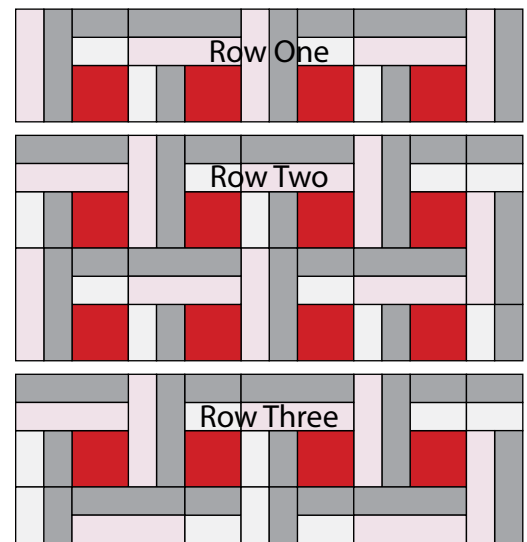
Layering, Quilting and Finishing

12. Press the quilt top and 80" x 80" backing well. Layer backing (wrong side up), batting, pressed quilt top (right side up) and baste. Quilt as desired and trim excess batting and backing when quilting is complete.

Binding

13. Cut the ends of the (8) Fabric A binding strips at a 45-degree angle and sew end to end to make (1) continuous piece of binding. Fold in half lengthwise and press wrong sides together.

14. Sew the binding to the front of the quilt, raw edges together. Turn the folded edge to the back, and hand stitch in place.



Quilt Layout

Every effort has been made to ensure that all projects are error free. All the information is presented in good faith, however no warranty can be given nor results guaranteed as we have no control over the execution of instructions. Therefore, we assume no responsibility for the use of this information or damages that may occur as a result. When errors are brought to our attention, we make every effort to correct and post a revision as soon as possible. Please make sure to check www.studioefabrics.net for pattern updates prior to starting the project. We also recommend that you test the project prior to cutting for kits. Finally, all free projects are intended to remain free to you and are not for resale.