

Free Project  
NOT FOR RESALE

QUILT 1

# Earth Day Every Day



Featuring fabrics from the **Earth Day Every Day** collection by Victoria Borges for **STUDIO · C · fabrics**

## Fabric Requirements

|                         |             |
|-------------------------|-------------|
| (A) 6157P-67            | 1 panel     |
| (B) Peppered Cottons-35 | 1/3 yard    |
| (C) 6148-17             | 1/3 yard    |
| (D) Peppered Cottons-27 | 3/8 yard    |
| (E) 6149-76*            | 5/8 yard    |
| (F) 6145-67             | 7/8 yard    |
| (G) 6153-76             | 7/8 yard    |
| (H) 6154-16             | 7/8 yard    |
| (I) Peppered Cottons-61 | 1-1/2 yards |

Backing 6145-67 4 yards

\*Includes Binding

## Additional Supplies Needed

Batting: 69" x 77"

(Recommended: Air Lite® Colour Me 100% Cotton)

Sewing and Quilting thread and supplies

Plastic for templates, fusible web

Quilt size: 61" x 69"

Skill Level: Advanced Beginner

Quilt designed by Denise Russell

## Fabrics in the Collection



6157P-67 Earth Day Panel  
Dk. Green



6156-76 10" Blocks  
Blue/Green



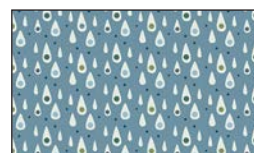
6145-67 Earth Day  
Mix - Dk. Green



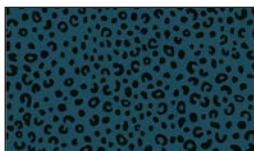
6146-67 Small World  
Medallion - Dk. Green



6147-66 Word  
Pattern - Md. Green



6148-17 Rain Drops  
Blue



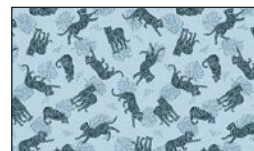
6149-76 Leopard  
Skin - Dk. Peacock



6150-76 Tossed  
Mixed  
Animals - Dk. Peacock



6151-76 Tossed  
Monkeys - Dk. Peacock



6152-76 Tossed  
Tigers - Lt. Blue



6153-76 Tossed  
Toucans - Dk. Peacock



6154-16 Tossed  
Leaves - Aqua



6155-16 Alligator  
Aqua

Selected fabrics from the  
Peppered Cottons collection



27 - Gingko  
Gold



35 - Oyster



61- Tide Pool

# Cutting

## Cutting Instructions

Please note: All strips are cut across the width of the fabric (WOF) from selvage to selvage unless otherwise noted. (WOF = Width of Fabric, LOF = Length of Fabric).

**Fabric A (6157P-67 Earth Day Panel – Dk. Green), trim:**

\*(1) 32-1/2" x 40-1/2" rectangle.

**Fabric B (Peppered Cottons-35 Oyster), cut:**

\*(6) 1-1/2" x WOF strips for border 2.

**Fabric C (6148-17 Raindrops – Blue), cut:**

\*(6) 1-1/2" x WOF strips for border 3.

**Fabric D (Peppered Cottons-27 - Gingko Gold), cut:**

\*(7) 1-1/2" x WOF strips for border 5.

**Fabric E (6149-76 Leopard Skin - Dk. Peacock), cut:**

\*(7) 2-1/2" x WOF strips for binding.

**Fabric F (6145-67 Earth Day Mix - Dk. Green), cut:**

\*(7) 3-1/2" x WOF strips for border 4.

**Fabric G (6153-76 Tossed Toucans - Dk. Peacock), cut:**

\*(22) Shapes A with the template.

**Fabric H (6154-16 Tossed Leaves – Aqua), cut:**

\*(22) Shapes B with the template.

**Fabric I (Peppered Cottons-61 - Tide Pool), cut:**

\*(6) 8-1/2" x WOF strips. Sub-cut (22) 8-1/2" squares.

## Block Assembly

1. Trace shapes A and B on the plastic for templates. Cut on the outline. Trace them on the smooth side of the fusible web 22 times each. Cut them 1/8" outside the outline, then remove the center of the fusible web from the two widest areas, leaving about 3/8" near the edges, making them hollow (*figure 1*).

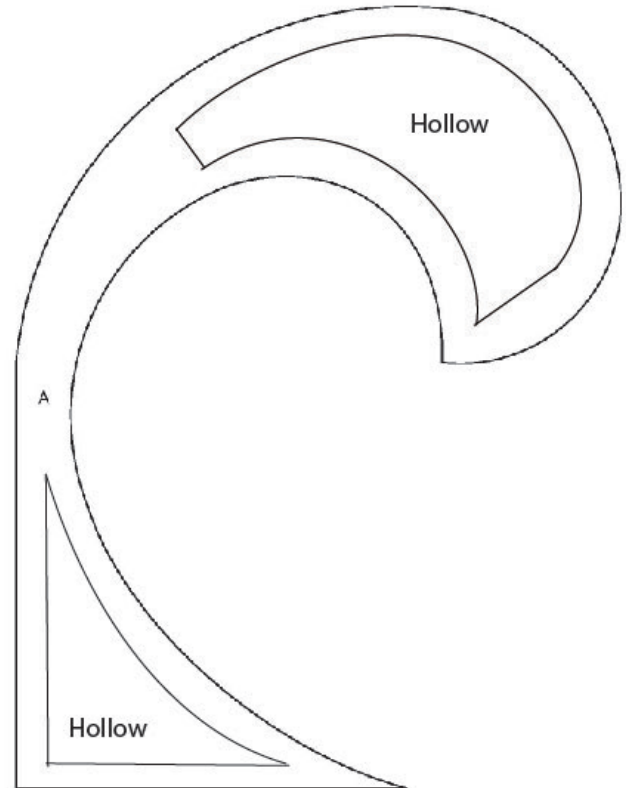


Figure 1

2. Fuse the shapes A to the wrong side of Fabric G and shapes B to Fabric H. Cut them on the outline and remove the paper backing. Fold the 8-1/2" Fabric I squares in half twice. Using the creased folds as guidelines, position the A and B shapes as shown, ensuring there is 1/4" between the shapes' edges and the squares' edges for the seam allowance (*figure 2*). Machine appliqué all blocks with matching thread and the blanket stitch.



Figure 2 – Make (22) 8-1/2" blocks.

# Sewing

## Quilt Top Assembly

*(Follow the quilt diagram and photograph while assembling the quilt top.)*

3. For border 1 and referring to the quilt photo for block orientation, arrange five blocks for each side of the quilt. Sew blocks together and sew one border strip to each side of the quilt center. Press the seam toward the quilt center.

4. Repeat Step 3 with six blocks and sew one border strip to the top and one to the bottom of the quilt center.

5. For border 2, sew the six 1-1/2" Fabric B strips together end to end using diagonal seams. Measure the vertical length of the quilt top through the center and cut two border strips that length. Sew one strip to each side of the quilt top. Measure the width of the quilt top through the center. Cut two border strips that length and sew one to the top and one to the bottom. Press the seams toward the borders.

6. Repeat Step 5 with the six 1-1/2" Fabric C strips to make and add border 3.

7. Repeat Step 5 with the seven 3-1/2" Fabric F strips to make and add border 4.

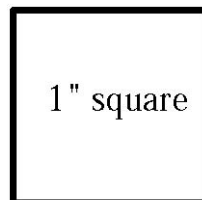
8. Repeat Step 5 with the seven 1-1/2" Fabric D strips to make and add border 5.

## Layering, Quilting, and Finishing

9. Create a quilt sandwich with the batting between the quilt top and the backing. Pin or baste layers together, mark quilting design, and quilt by hand or machine. When quilting is complete, remove pins or basting and trim batting and backing even with raw edges of the quilt top.

## Binding

10. Join the seven 2-1/2" Fabric E binding strips together end to end using a diagonal seam to make one long strip. Fold in half lengthwise and press. Sew binding to the edges of the quilt top, mitering corners, and overlapping ends. Fold binding to the back of the quilt and stitch it in place by hand to finish.

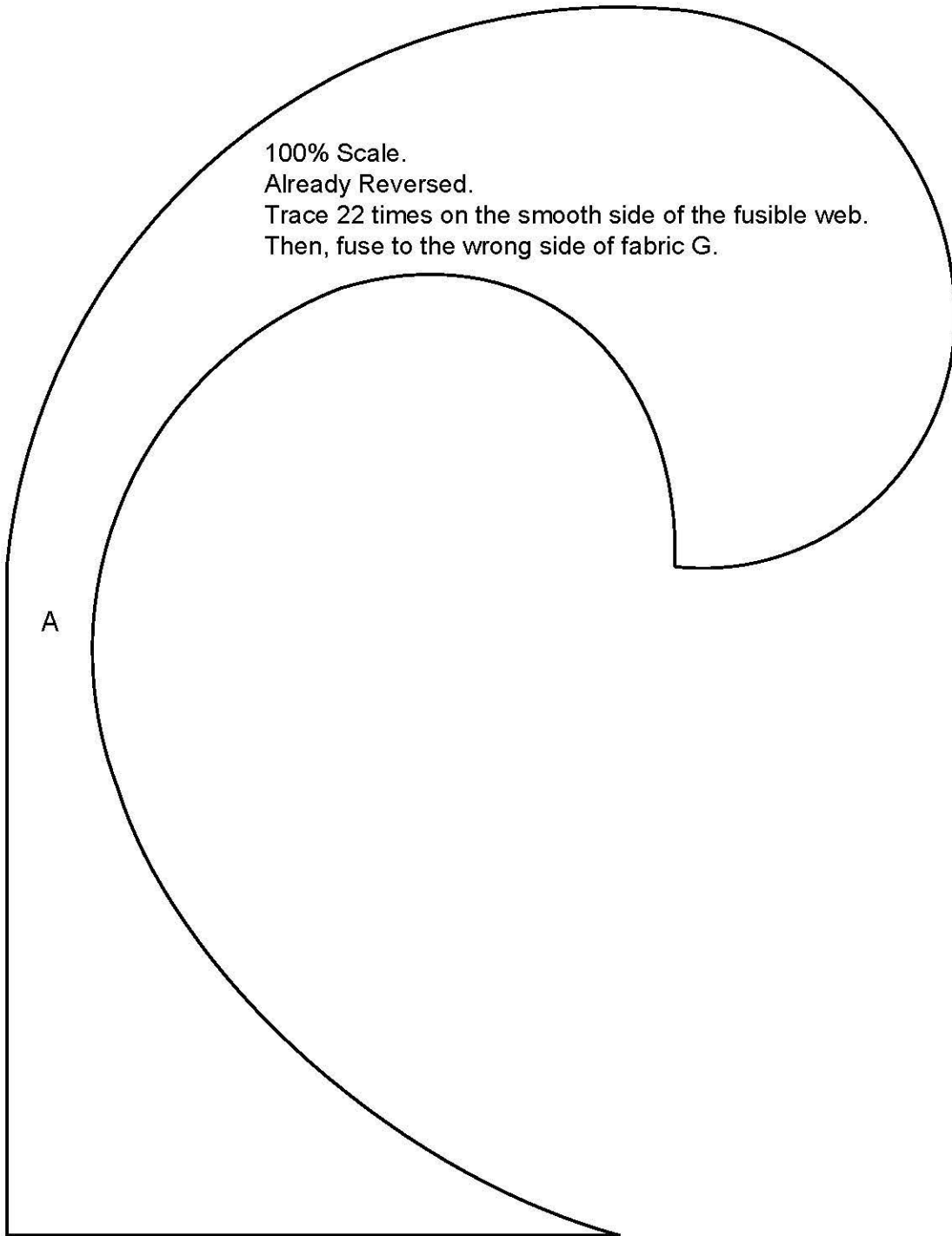


©2021 Studio e Fabrics®

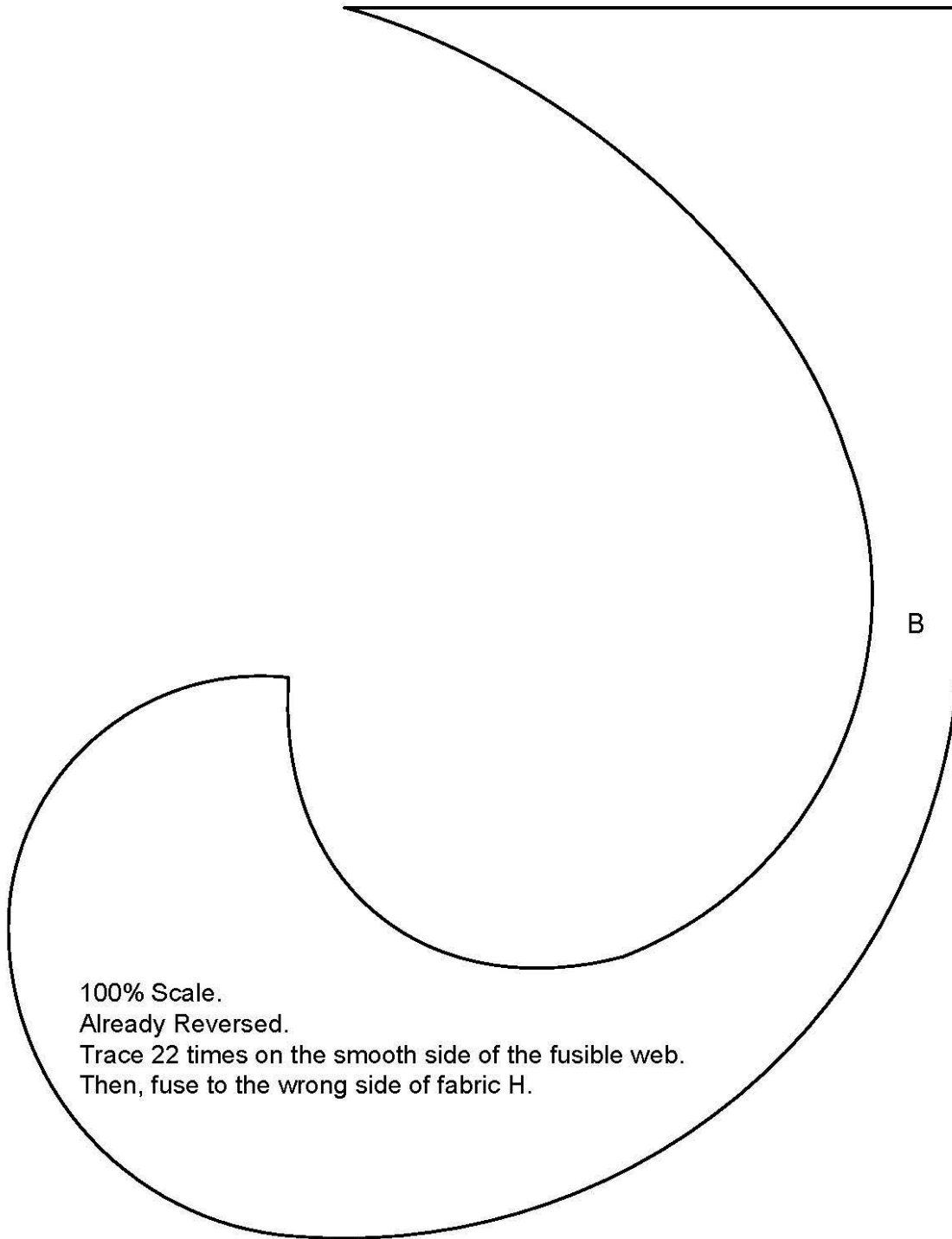
*Every effort has been made to ensure that all projects are error free. All the information is presented in good faith; however, no warranty can be given nor results guaranteed as we have no control over the execution of instructions. Therefore, we assume no responsibility for the use of this information or damages that may occur as a result. When errors are brought to our attention, we make every effort to correct and post a revision as soon as possible. Please make sure to check [www.studioefabrics.net](http://www.studioefabrics.net) for pattern updates prior to starting the project. We also recommend that you test the project prior to cutting for kits. Finally, all free projects are intended to remain free to you and are not for resale.*

# Sewing

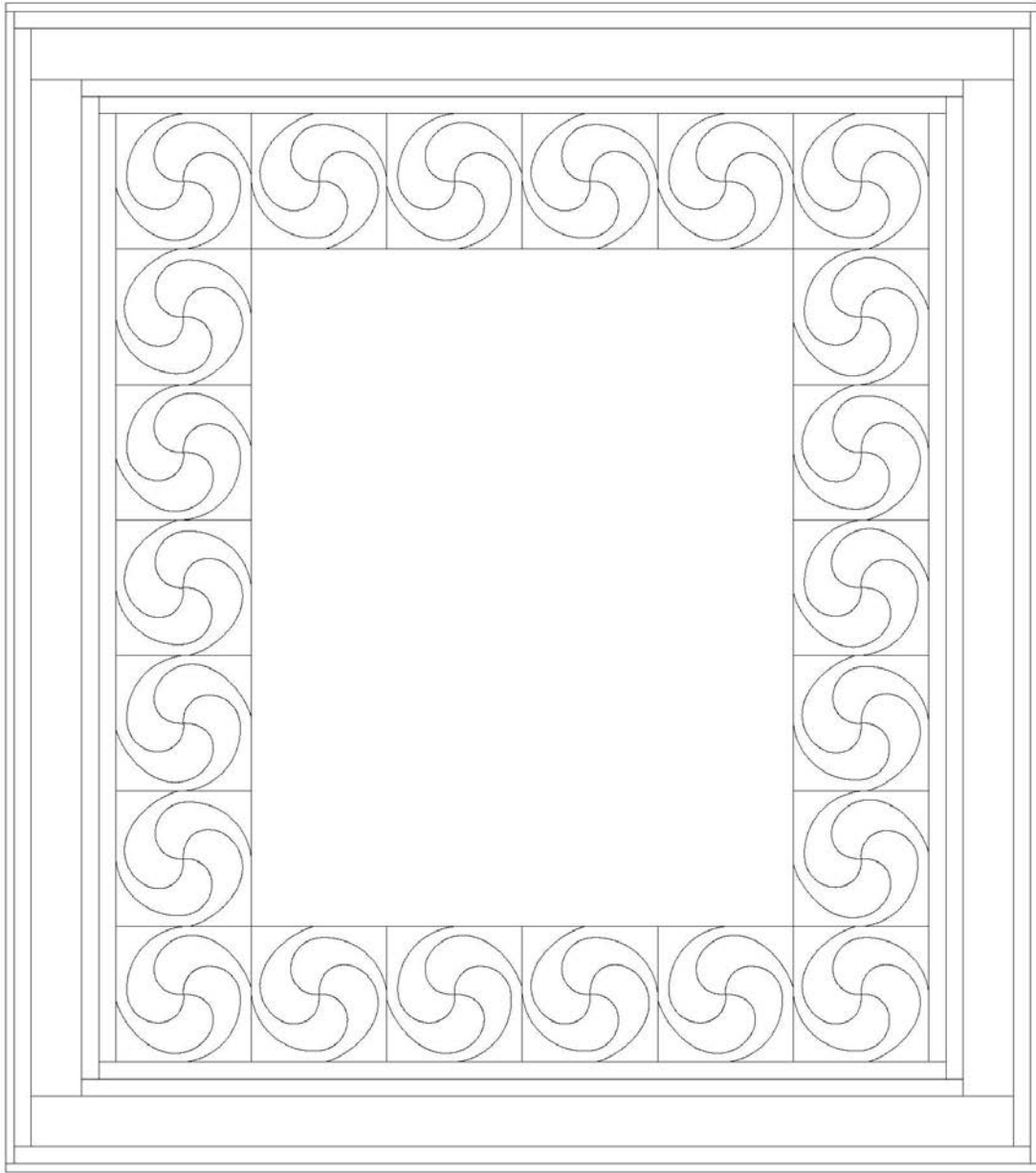
100% Scale.  
Already Reversed.  
Trace 22 times on the smooth side of the fusible web.  
Then, fuse to the wrong side of fabric G.



# Sewing



# Sewing Cont.



Quilt Diagram