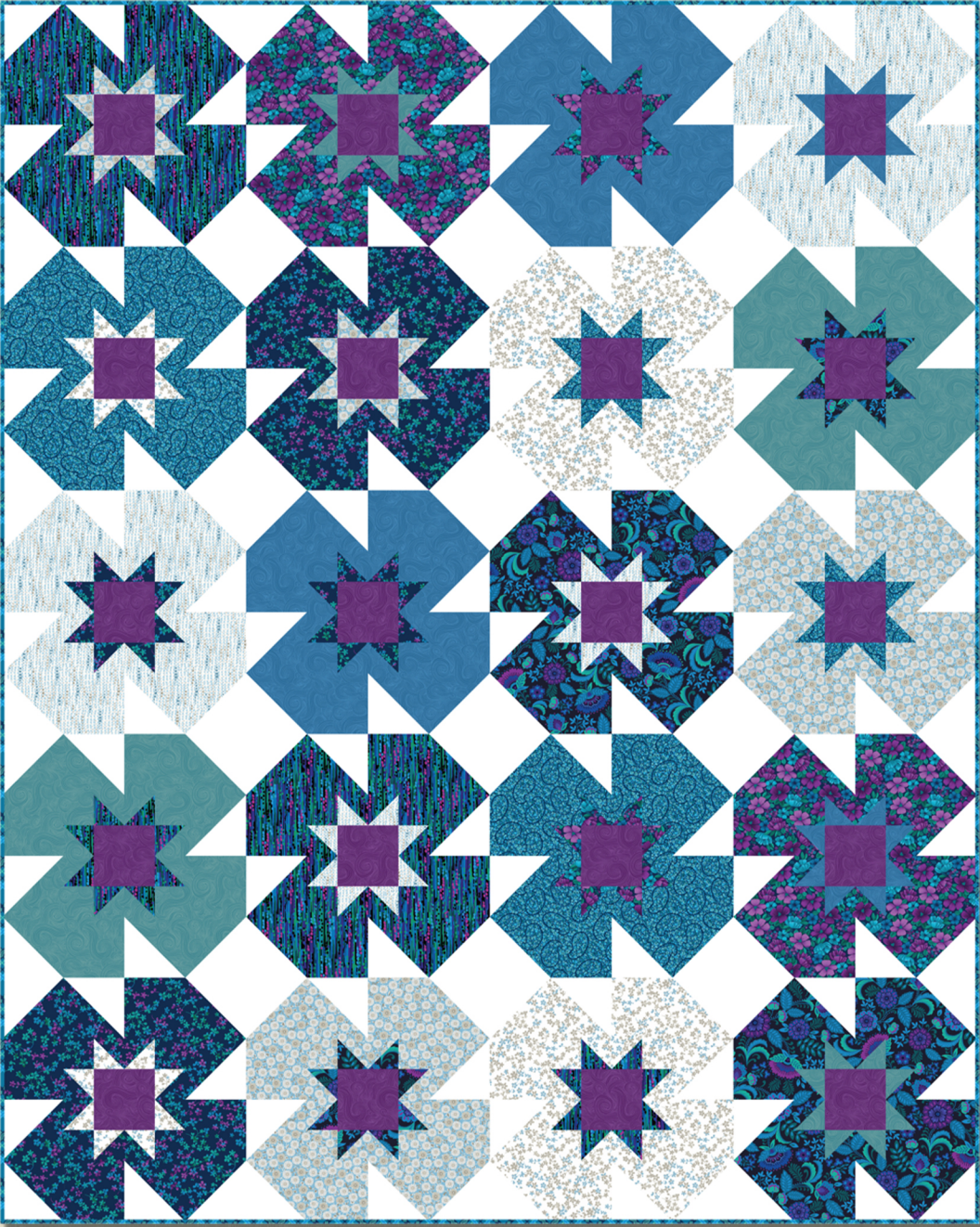


Summer Garden Quilt

Designed by Julie Burton of Running Stitch Quilts

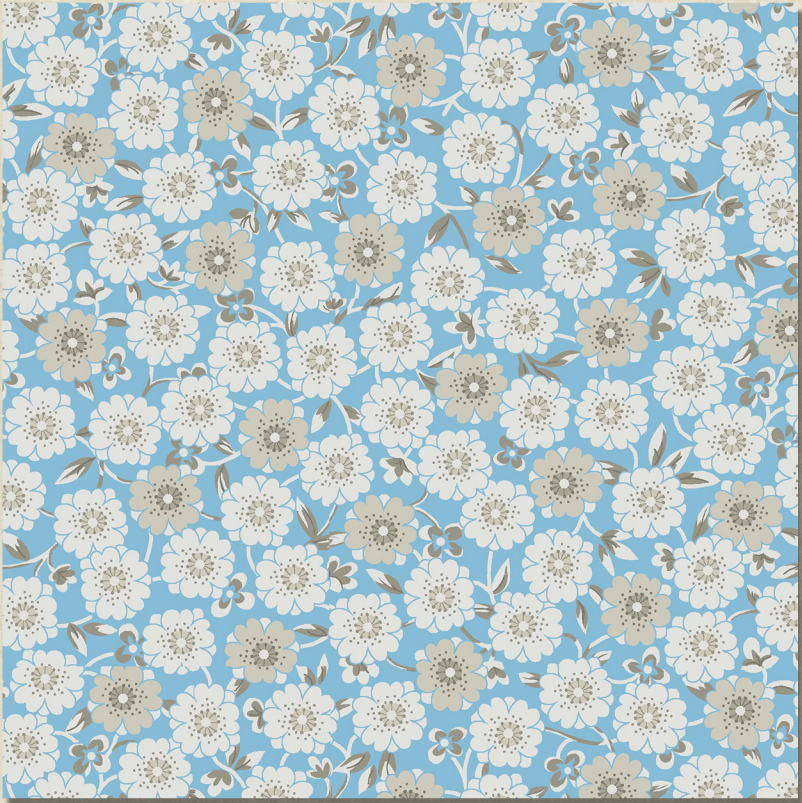


Finished Size: 64" x 80" (1.63m x 2.03m)

Technique: Traditional Piecing

Pattern available at www.runningstitchquilts.com or Your Favorite Distributor

Summer Garden Quilt Ordering Guide				
SKU	Yards	Meters	12 Kits	24 Kits
7641-72	1/2 yds	0.46m	1 bolt	1 bolt
7642-72	1/2 yds	0.46m	1 bolt	1 bolt
7643-72	1/2 yds	0.46m	1 bolt	1 bolt
7644-76*	5/8 yds	0.57m	1 bolt	2 bolts
7645-71	1/2 yds	0.46m	1 bolt	1 bolt
7646-31	1/2 yds	0.46m	1 bolt	1 bolt
7647-72	1/2 yds	0.46m	1 bolt	1 bolt
7649-13	1/2 yds	0.46m	1 bolt	1 bolt
7650-13	1/2 yds	0.46m	1 bolt	1 bolt
1351-Grape	1/2 yds	0.46m	1 bolt	1 bolt
1351-Denim	1/2 yds	0.46m	1 bolt	1 bolt
1351-Aqua	1/2 yds	0.46m	1 bolt	1 bolt
White Sugar-9	11/2 yds	1.37m	2 bolts	3 bolts
Backing Fabric Option				
7649-13	5 yds	4.57m	5 bolts	9 bolts
* Indicates binding fabric. FQ = 18" x 22" (0.45m x 0.55m) All fabric quantities are based on 15yd bolts unless otherwise indicated.				



Tonal Daisy 7649-13

Backing Fabric Option