

Free Project
NOT FOR RESALE

Flamingo Beach

QUILT 1



Featuring fabrics from the **Flamingo Beach** collection from **STUDIO C Fabrics**

Fabric Requirements

- (A) 5028P-22..... 1 panel
- (B) 5037-44..... 3/8 yard
- (C) 5038-28..... 3/8 yard
- (D) 5036-12..... 3/8 yard
- (E) Peppered Cottons-11*.... 2/3 yard
- (F) 5030-26..... 3/4 yard
- Backing 5039-22..... 3-1/2 yards

*Includes Binding

Additional Supplies Needed

- Batting: 59" x 67"
- Sewing and Quilting thread
- Sewing and Quilting supplies

Quilt size: 50.5" x 58.5"

Skill Level: Beginner

Quilt designed by Denise Russell

Fabrics in the Collection



Panel - Pink
5028P-22



Flamingoes - Pink
5029-22



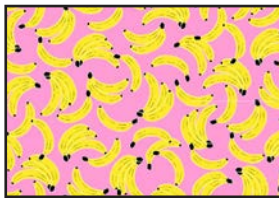
Tropical Floral - Pink/Green
5030-26



Tropical Leaves - Green
5031-66



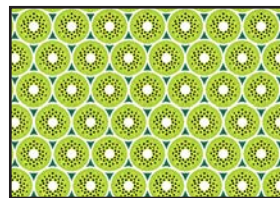
Pineapples - Lime
5032-64



Bananas - Pink/Yellow
5033-24



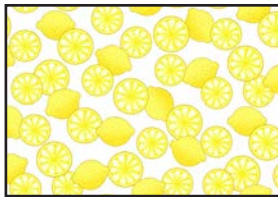
Strawberries - Pink
5034-22



Kiwis - Lime
5035-62



Watermelon - Sky Blue/Pink
5036-12



Lemons - Citrus Yellow
5037-44



Surf Boards - Teal Multi
5040-61

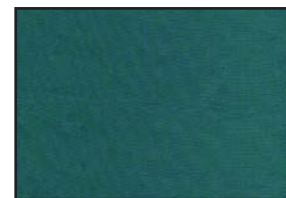


Mini Tropical Floral - Dark Pink
5038-28



Cocktails - Multi
5039-22

Selected Fabric from the Peppered
Cottons Collection



11 - Marine Blue

Cutting

Cutting Instructions

Please note: All strips are cut across the width of the fabric (WOF) from selvage to selvage unless otherwise noted.
(WOF = Width of Fabric, LOF = Length of Fabric)

Fabric A (5028P-22 Panel-Pink):

*Trim panel to 34-1/2" x 42-1/2".

Fabric B (5037-44 Lemons-Citrus Yellow), cut:

*(4) 2" x WOF strips for border 1.

Fabric C (5038-28 Mini Tropical Floral-Dark Pink), cut:

*(5) 1-1/2" x WOF strips for border 2.

Fabric D (5036-12 Watermelon-Sky Blue/Pink), cut:

*(5) 2" x WOF strips for border 3

Fabric E (Peppered Cottons-11 Marine Blue), cut:

*(5) 1-1/4" x WOF strips for border 4.

*(6) 2-1/2" x WOF strips for binding.

Fabric F (5030-26 Tropical Floral-Pink/Green), cut:

*(5) 4" x WOF strips for border 5.

Sewing

Measurements include 1/4" seam allowances. Sew with right sides together unless otherwise stated. If no direction is specified, press seam toward darker fabric.

Quilt Top Assembly

(Follow the quilt diagram and photograph while assembling the quilt top.)

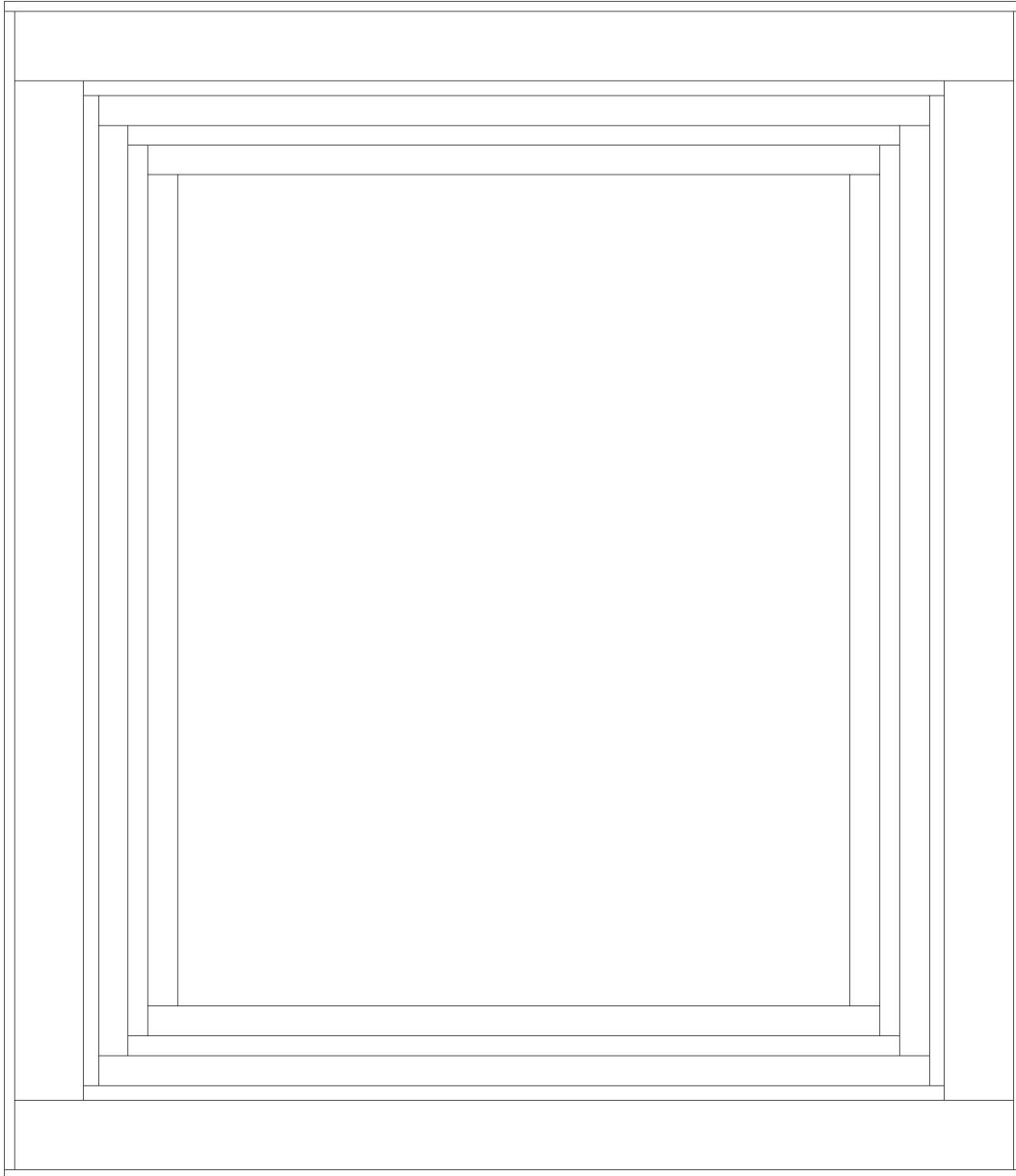
1. For border 1, sew the four 2" Fabric B strips together end to end using diagonal seams. Cut two strips 42-1/2" long and sew them to each side of the panel. Press the seams toward the border strips. Measure the width of the quilt top through the center. Cut two border strips that length and sew one to the top and one to the bottom. Press the seams toward the borders.
2. For border 2, sew the five 1-1/2" Fabric C strips together end to end using diagonal seams. Measure the vertical length of the quilt top through the center and cut two border strips that length. Sew one strip to each side of the quilt top. Measure the width of the quilt top through the center. Cut two border strips that length and sew one to the top and one to the bottom. Press the seams toward the borders.
3. Repeat step 3 with the five 2" Fabric D strips to make and add border 3.
4. Repeat step 3 with the five 1-1/4" Fabric E strips to make and add border 4.
5. Repeat step 3 with the five 4" Fabric F strips to make and add border 5.

Layering, Quilting, and Finishing

6. Create a quilt sandwich with the batting between the quilt top and the backing. Pin or baste layers together, mark quilting design, and quilt by hand or machine. When quilting is complete, remove pins or basting, and trim batting and backing even with raw edges of the quilt top.

Binding

7. Sew the six 2-1/2" Fabric E binding strips together end to end using a diagonal seam to make one long strip. Fold in half lengthwise and press. Sew binding to the edges of the quilt top, mitering corners, and overlapping ends. Fold binding to the back of the quilt and stitch it in place by hand to finish.



Quilt Diagram

©2019 Studio e Fabrics®

Every effort has been made to ensure that all projects are error free. All the information is presented in good faith; however, no warranty can be given nor results guaranteed as we have no control over the execution of instructions. Therefore, we assume no responsibility for the use of this information or damages that may occur as a result. When errors are brought to our attention, we make every effort to correct and post a revision as soon as possible. Please make sure to check www.studioefabrics.com for pattern updates prior to starting the project. We also recommend that you test the project prior to cutting for kits. Finally, all free projects are intended to remain free to you and are not for resale.