

A Free Project Sheet
NOT FOR RESALE

HUMMINGBIRD HEAVEN

QUILT 1



Featuring fabrics from the **Hummingbird Heaven** collection by **Elizabeth Isles** for **STUDIO·e·fabrics**

Fabric Requirements

(A) 5779P-17	1 panel
(B) 5771-55	1 2/3 yards*
(C) 5778-17	1 3/4 yards
(D) 5776-77	1/4 yard
(E) 5772-01	1/4 yard
(F) 5771-07	1/4 yard
(G) 5775-17	1/4 yard
(H) 5781-17	1/4 yard

(I) 5773-17	1/4 yard
(J) 5780-17	1/4 yard
(K) 5776-17	1/4 yard
(L) 5771-17	1/4 yard
Backing	
5774-17	4 1/3 yards

* Includes Binding

Additional Supplies Needed

Batting 77" x 83" (Recommended:
Air Lite® Colour Me 100% Cotton)
Piecing and sewing thread
Quilting and sewing supplies

Quilt designed by Heidi Pridemore
Finished Quilt Size 69" x 75"
Skill Level: Advanced Beginner

Please check our website for pattern updates before starting this project.

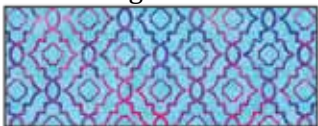
Fabrics in the Collection



Hummingbird Allover
Multi Bright – 5771-07



Splashy Texture
Multi Bright – 5772-01



Arabesque
Sky Blue – 5775-17



Hummingbird Allover
Sky Blue – 5771-17



Nasturtiums
Sky Blue – 5773-17



Arabesque
Royal – 5775-77



Hummingbird Allover
Purple – 5771-55



Large Allover Flowers
Sky Blue – 5774-17



Medallion
Sky Blue – 5776-17



Hummingbird Allover
Royal – 5771-77



Large Allover Flowers
Navy – 5774-77



Medallion
Navy – 5776-77



Bird and Flower Blocks
Sky Blue – 5777-17



Border Stripe
Sky Blue – 5778-17



Hummingbird Swirl
Sky Blue – 5780-17



Hummingbird Swirl
Navy – 5780-77



Flower Dot
Sky Blue – 5781-17



Flower Dot
Fuchsia – 5781-55



Flower Dot
Navy – 5781-77



Hummingbird Panel
Sky Blue – 5779P-17

Select Fabrics from
Just Color!



Grape
1351-Grape



Powder Pink
1351-Powder Pink

Cutting

Cutting Instructions

Please note: All strips are cut across the width of fabric (WOF) from selvage to selvage edge unless otherwise noted.

WOF= Width of Fabric • LOF = Length of Fabric

Fabric A (5779P-17 Hummingbird Panel 36"x 44" – Sky Blue):

- Fussy cut (1) 30 ½" x 36" rectangle, centered on the panel.

Fabric B (5771-55 Hummingbird Allover – Purple), cut:

- (3) 2 ¼" x WOF strips. Sew the strips together end to end with diagonal seams and cut (2) 2 ¼" x 54 ½" strips.
- (2) 2" x 36" WOF strips.
- (2) 2" x 33 ½" WOF strips.
- (3) 2" x WOF strips. Sew the strips together end to end with diagonal seams and cut (2) 2" x 57" strips.
- (4) 2" x WOF strips. Sew the strips together end to end with diagonal seams and cut (2) 2" x 72 ½" strips.
- (4) 2" x WOF strips. Sew the strips together end to end with diagonal seams and cut (2) 2" x 69 ½" strips.
- (8) 2 ½" x WOF strips for the binding.

Fabric C (5778-17 Border Stripe – Sky Blue), cut:

- (2) 10" x 61" LOF strips.
- (2) 10" x 56" LOF strips.

Fabric D (5776-77 Medallion – Navy), fussy cut:

- (4) 6 ½" squares, each entered on a medallion.

Fabric E (5772-01 Splashy Texture – Multi Bright), cut:

- (2) 3 ½" x WOF strips, sub-cut (10) 3 ½" x 6 ½" strips.

Fabric F (5771-07 Hummingbird Allover – Multi Bright), cut:

- (2) 3 ½" x WOF strips, sub-cut (10) 3 ½" x 6 ½" strips.

Fabric G (5775-17 Arabesque – Sky Blue), cut:

- (2) 3 ½" x WOF strips, sub-cut (10) 3 ½" x 6 ½" strips.

Fabric H (5781-17 Flower Dot – Sky Blue), cut:

- (2) 3 ½" x WOF strips, sub-cut (10) 3 ½" x 6 ½" strips.

Fabric I (5773-17 Nasturtiums – Sky Blue), cut:

- (2) 3 ½" x WOF strips, sub-cut (9) 3 ½" x 6 ½" strips.

Fabric J (5780-17 Hummingbird Swirl – Sky Blue), cut:

- (2) 3 ½" x WOF strips, sub-cut (9) 3 ½" x 6 ½" strips.

Fabric K (5776-17 Medallion – Sky Blue), cut:

- (2) 3 ½" x WOF strips, sub-cut (9) 3 ½" x 6 ½" strips.

Fabric L (5771-17 Hummingbird Allover – Sky Blue), cut:

- (2) 3 ½" x WOF strips, sub-cut (9) 3 ½" x 6 ½" strips.

Backing (5774-17 Large Allover Flowers – Sky Blue), cut:

- (2) 77" x WOF strips. Sew the strips together and trim to 77" x 83" to make the back.

Sewing

Sew using a $\frac{1}{4}$ " seam allowance with right sides together (RST) unless otherwise indicated. Always press towards the darker fabric while assembling, unless otherwise noted by the arrows.

Block Assembly

Note: The arrows in figures represent the fabric print direction. Pay attention to the fabric and unit orientations when assembling the various components.

1. Sew (1) 2" x 36" Fabric B strip to each side of the 30 $\frac{1}{2}$ " x 36" Fabric A panel. Sew (1) 2" x 33 $\frac{1}{2}$ " Fabric B strip to the top and to the bottom of the Fabric A panel to make the Center Block (Fig. 1). **Trim the block to measure 32 $\frac{1}{2}$ " x 38"**.

2. Follow Figure 2 and sew together (20) assorted 3 $\frac{1}{2}$ " x 6 $\frac{1}{2}$ " strips lengthwise to make the Left Side Border.

3. Follow Figure 3 and sew together (20) assorted 3 $\frac{1}{2}$ " x 6 $\frac{1}{2}$ " strips lengthwise to make the Right Side Border.

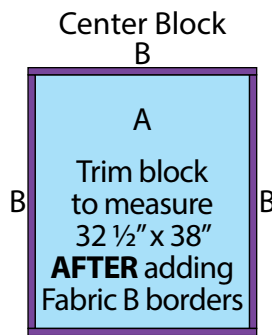


Fig. 1 B

Left Side Border	Right Side Border
H	G
G	H
F	I
E	J
L	K
K	L
J	E
I	F
H	G
G	H
F	I
E	J
L	K
K	L
J	E
I	F
H	G
G	H
F	I
E	J

Fig. 2

Fig. 3

4. Follow Figure 4 and sew together (18) assorted 3 $\frac{1}{2}$ " x 6 $\frac{1}{2}$ " strips lengthwise. Sew (1) 6 $\frac{1}{2}$ " Fabric D square to each end of the newly sewn strip to make the Top Border.



Fig. 4

5. Follow Figure 5 and sew together (18) assorted 3 $\frac{1}{2}$ " x 6 $\frac{1}{2}$ " strips lengthwise. Sew (1) 6 $\frac{1}{2}$ " Fabric D square to each end of the newly sewn strip to make the Bottom Border.



Fig. 5

Quilt Top Assembly

(Follow the Quilt Layout while assembling the quilt top.)

6. Center (1) 10" x 61" Fabric C strip on (1) side of the Center Block and pin in place. Start sewing the strip a $\frac{1}{4}$ " from the top edge of the block and stop a $\frac{1}{4}$ " from the bottom edge. **DO NOT TRIM THE EXCESS.** Repeat with the opposite side.

7. Repeat Step 6 to sew (1) 10" x 56" Fabric C strip to the top and to the bottom of the Center Block, making sure to stop and start $\frac{1}{4}$ " away from each end of the block. To miter each corner, fold the Center Block on a diagonal, wrong side together. This should line up the strips from adjacent sides (Fig. 6).

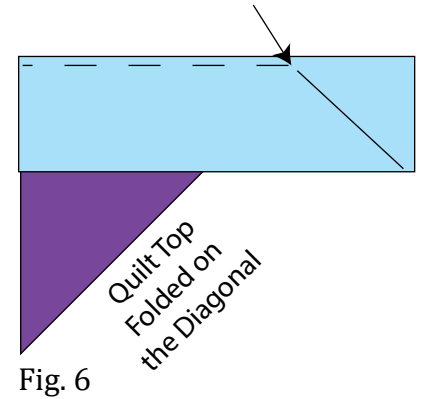


Fig. 6

8. Starting at the sewn seam (represented by the arrow in Figure 6), draw a 45-degree line to the edge of the fabric. Sew on the drawn line. Trim the excess fabric leaving a $\frac{1}{4}$ " seam. Repeat this step with the remaining corners.

9. Sew (1) 2" x 57" Fabric B strip to each side of the Center Block. Sew (1) 2 $\frac{1}{4}$ " x 54 $\frac{1}{2}$ " Fabric B strip to the top and to the bottom of the Center Block.

10. Sew the Left Side Border and Right Side Border to the left and to the right side of the Center Block. Sew the Top Border and Bottom Border to the top and to the bottom of the Center Block.

11. Sew (1) 2" x 72 $\frac{1}{2}$ " Fabric B strip to each side of the Center Block. Sew (1) 2" x 69 $\frac{1}{2}$ " Fabric B strip to the top and to the bottom of the Center Block to make the quilt top.

Layering, Quilting and Finishing

12. Press the quilt top and 77" x 83" backing well. Layer backing (wrong side up), batting, pressed quilt top (right side up) and baste. Quilt as desired and trim excess batting and backing when quilting is complete.

Binding

13. Cut the ends of the (8) Fabric B binding strips at a 45-degree angle and sew end to end to make (1) continuous piece of binding. Fold in half lengthwise and press wrong sides together.

14. Sew the binding to the front of the quilt, raw edges together. Turn the folded edge to the back, and hand stitch in place.

