




A Free Project Sheet  
NOT FOR RESALE

# Koi Garden

QUILT 1



Featuring fabrics from the **Koi Garden** collection by Nancy Archer for 

## Fabric Requirements

- (A) 6033P-72 ..... 1 panel
- (B) 6026-22 ..... 2/3 yard
- (C) 6031-12 ..... 1/3 yard
- (D) 6028-12 ..... 1 1/3 yards
- (E) 6024-72 ..... 1/4 yard
- (F) 6030-17 ..... 2/3 yard
- (G) 6025-72 ..... 1/4 yard
- (H) 6027-72 ..... 1/4 yard

- (I) 6029-72 ..... 1/4 yard
- (J) 1351-Lime\*\*..... 1 yard\*
- (K) 6032-72 ..... 2 1/2 yards
- Backing  
6026-77 ..... 5 1/4 yards

\* Includes Binding  
\*\* Just Color! Collection

## Additional Supplies Needed

- Batting 77" x 92" (Recommended:  
Air Lite® Colour Me 100% Cotton)
- Piecing and sewing thread
- Quilting and sewing supplies

Quilt designed by Heidi Pridemore  
Finished Quilt Size 69" x 84"  
Skill Level: Beginner

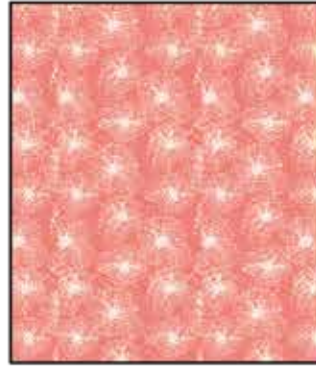
# Fabrics in the Collection



Tossed Koi Fish  
Multi - 6024-72



Tossed Lily Pads  
Multi - 6025-72



Textured Lily Pads  
Blush - 6026-22



Textured Lily Pads  
Blue - 6026-77



Tossed Small Koi Fish  
Multi - 6027-72



Frogs and Flowers  
Multi - 6028-12



Tossed Lily Pads and Dragonflies  
Multi - 6029-72



Water Texture  
Multi - 6030-17



Koi Fish Panel 24in x 44in  
Multi - 6033P-72



Tossed Small Dragonflies  
Multi - 6031-12



Border Stripe  
Multi - 6032-72

Select Fabric from  
Just Color!



Lime  
1351-Lime

## Cutting

### Cutting Instructions

*Please note: All strips are cut across the width of fabric (WOF) from selvage to selvage edge unless otherwise noted.*

WOF= Width of Fabric • LOF = Length of Fabric

#### **Fabric A (6033P-72 Koi Fish Panel 24in x 44in – Multi):**

- Fussy cut (1) 22 ½" x 42 ½" rectangle, centered on the panel.

#### **Fabric B (6026-22 Textured Lily Pads – Blush), cut:**

- (3) 2" x WOF strips. Sew the strips together end to end with diagonal seams and cut (2) 2" x 51 ½" strips.
- (2) 2" x 39 ½" WOF strips.
- (2) 2" x 42 ½" WOF strips, piece as needed.
- (2) 2" x 25 ½" WOF strips.

#### **Fabric C (6031-12 Tossed Small Dragonflies – Multi), cut:**

- (2) 4" x 36 ½" WOF strips.

#### **Fabric D (6028-12 Frogs and Flowers – Multi), cut:**

- (2) 6 ½" x 44 ½" LOF strips.

#### **Fabric E (6024-72 Tossed Koi Fish – Multi), cut:**

- (1) 6 ½" x WOF strip, sub-cut (6) 6 ½" squares.

#### **Fabric F (6030-17 Water Texture – Multi), cut:**

- (3) 6 ½" x WOF strips, sub-cut (30) 6 ½" x 3 ½" strips.

#### **Fabric G (6025-72 Tossed Lily Pads – Multi), cut:**

- (1) 6 ½" x WOF strip, sub-cut (10) 6 ½" x 3 ½" strips.

#### **Fabric H (6027-72 Tossed Small Koi Fish – Multi), cut:**

- (1) 6 ½" x WOF strip, sub-cut (9) 6 ½" x 3 ½" strips.

#### **Fabric I (6029-72 Tossed Lily Pads and Dragonflies – Multi), cut:**

- (1) 6 ½" x WOF strip, sub-cut (9) 6 ½" x 3 ½" strips.

#### **Fabric J (1351-Lime Just Color! – Lime), cut:**

- (4) 1 ½" x WOF strips. Sew the strips together end to end with diagonal seams and cut (2) 1 ½" x 66 ½" strips.
- (3) 1 ½" x WOF strips. Sew the strips together end to end with diagonal seams and cut (2) 1 ½" x 53 ½" strips.
- (8) 2 ½" x WOF strips for the binding.

#### **Fabric K (6032-72 Border Stripe – Multi), cut:**

- (2) 8 ½" x 88" LOF strips.
- (2) 8 ½" x 73" LOF strips.

#### **Backing (6026-77 Textured Lily Pads – Blue), cut:**

- (2) 92" x WOF strips. Sew the strips together and trim to 77" x 92" to make the back.

## Sewing

Sew using a ¼" seam allowance with right sides together (RST) unless otherwise indicated. Always press towards the darker fabric while assembling, unless otherwise noted by the arrows.

### Block Assembly

**Note: The arrows in figures represent the fabric print direction. Pay attention to the fabric and unit orientations when assembling the various components.**

1. Sew (1) 2" x 42 ½" Fabric B strip to each side of (1) 22 ½" x 42 ½" Fabric A panel. Sew (1) 2" x 25 ½" Fabric B strip to the top and to the bottom of the Fabric A panel to make the Center Block (Fig. 1). **Trim the block to measure 24 ½" x 44 ½"**.

2. Follow Figure 2 and sew together (8) 3 ½" x 6 ½" Fabric F strips, (3) 3 ½" x 6 ½" Fabric G strips, (3) 3 ½" x 6 ½" Fabric I strips, (2) 3 ½" x 6 ½" Fabric H strips and (1) 6 ½" Fabric E square to make the Left Side Border.

3. Repeat Step 2 and refer to Figures 3-5 for fabric identification, placement and orientation to make the Right Side Border, Top Border and Bottom Border.

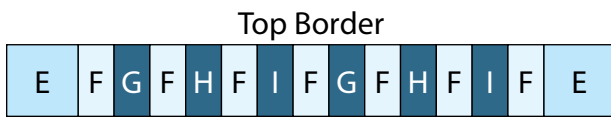
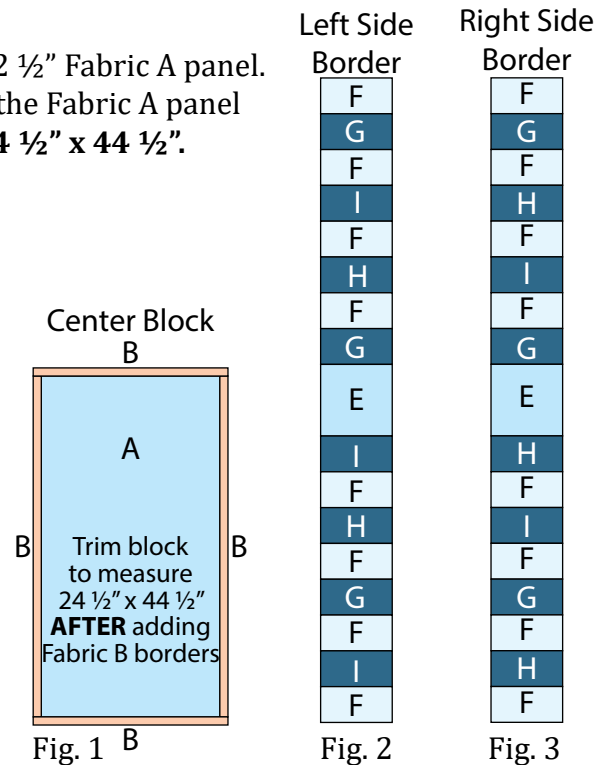


Fig. 4

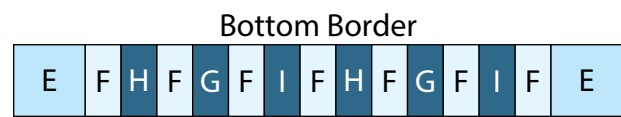


Fig. 5

### Quilt Top Assembly

**(Follow the Quilt Layout while assembling the quilt top.)**

4. Sew (1) 6 ½" x 44 ½" Fabric D strip to each side of the Center Block.

5. Sew (1) 4" x 36 ½" Fabric C strip to the top and to the bottom of the Center Block.

6. Sew (1) 2" x 51 ½" Fabric B strip to each side of the Center Block. Sew (1) 2" x 39 ½" Fabric B strip to the top and to the bottom of the Center Block.

7. Sew the Left Side Border and Right Side Border to the left and to the right sides of the Center Block.

8. Sew the Top Border and Bottom Border to the top and to the bottom of the Center Block.

9. Sew (1) 1 ½" x 66 ½" Fabric J strip to each side of the Center Block. Sew (1) 1 ½" x 53 ½" Fabric J strip to the top and to the bottom of the Center Block.

10. Center (1) 8 ½" x 88" Fabric K strip on (1) side of the Center Block and pin in place. Start sewing the strip a ¼" from the top edge of the block and stop a ¼" from the bottom edge. **DO NOT TRIM THE EXCESS.** Repeat with the opposite side.

11. Repeat Step 10 to sew (1) 8 ½" x 73" Fabric K strip to the top and to the bottom of the Center Block, making sure to stop and start ¼" away from each end of the block. To miter each corner, fold the Center Block on a diagonal, wrong side together. This should line up the strips from adjacent sides (Fig. 6).

12. Starting at the sewn seam (represented by the arrow in Figure 6), draw a 45-degree line to the edge of the fabric. Sew on the drawn line. Trim the excess fabric leaving a ¼" seam. Repeat this step with the remaining corners to make the quilt top.

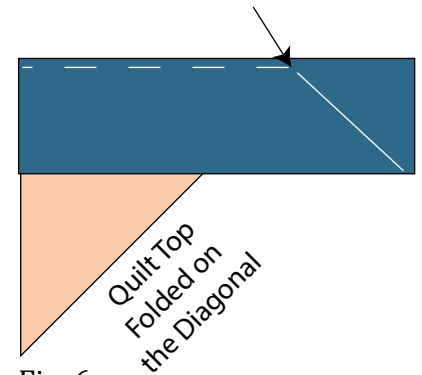


Fig. 6

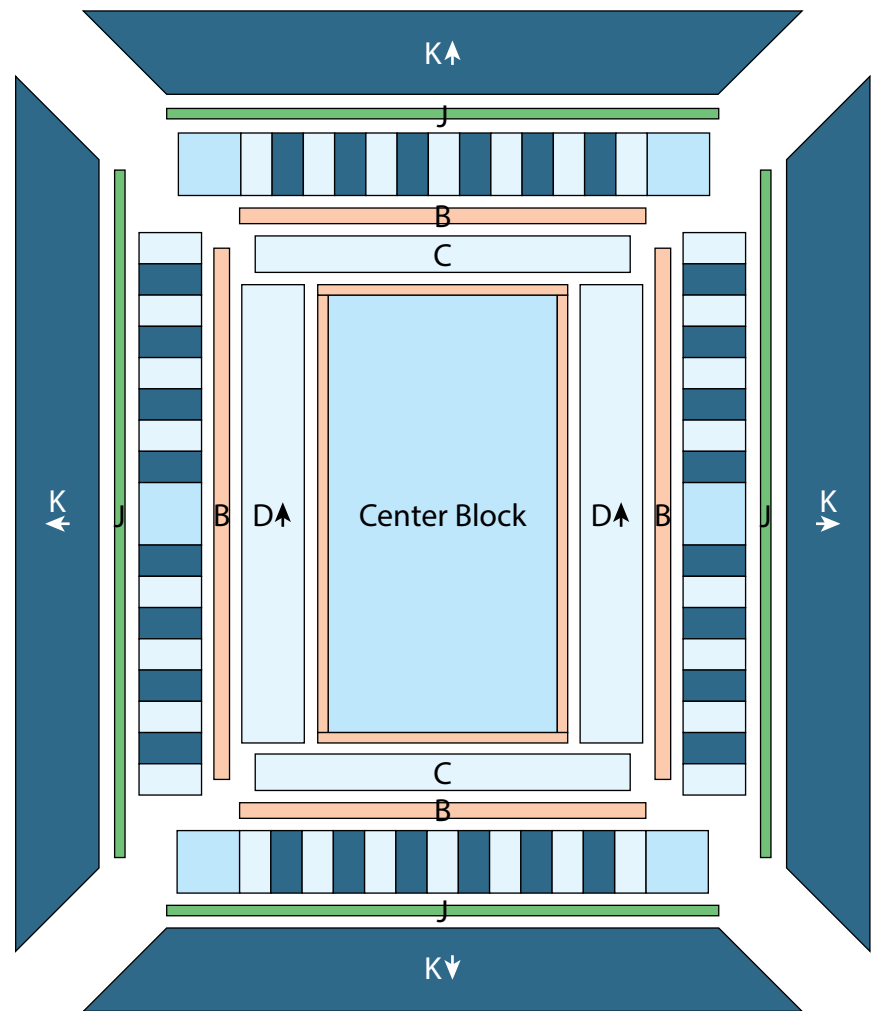
### Layering, Quilting and Finishing

13. Press the quilt top and 77" x 90" backing well. Layer backing (wrong side up), batting, pressed quilt top (right side up) and baste. Quilt as desired and trim excess batting and backing when quilting is complete.

### Binding

14. Cut the ends of the (8) Fabric J binding strips at a 45-degree angle and sew end to end to make (1) continuous piece of binding. Fold in half lengthwise and press wrong sides together.

15. Sew the binding to the front of the quilt, raw edges together. Turn the folded edge to the back, and hand stitch in place.



Quilt Layout

*Every effort has been made to ensure that all projects are error free. All the information is presented in good faith, however no warranty can be given nor results guaranteed as we have no control over the execution of instructions. Therefore, we assume no responsibility for the use of this information or damages that may occur as a result. When errors are brought to our attention, we make every effort to correct and post a revision as soon as possible. Please make sure to check [www.studioefabrics.net](http://www.studioefabrics.net) for pattern updates prior to starting the project. We also recommend that you test the project prior to cutting for kits. Finally, all free projects are intended to remain free to you and are **not for resale**.*