

Love You Sew

• A Free Project Sheet •
• NOT FOR RESALE •

QUILT 1



Featuring fabrics from the **Love You Sew** collection by **Nancy Archer** for **STUDIO e fabrics**

Fabric Requirements

(A) 6627P-79 1 panel
(B) 6621-28 ½ yard
(C) 6623-7 ⅔ yard
(D) 6620-80 ½ yard
(E) 1351-Pigment White** ⅝ yard
(F) 6625-99 1 yard
(G) 6616-79 ⅝ yard
(H) 6618-79 ⅜ yard
(I) 6622-72 ¼ yard

(J) 6624-86 ¼ yard
(K) 6617-98 ¼ yard
(L) 6619-98 ¾ yard
(M) Flame-16+ ⅝ yard*
Backing
6618-79 3 ¾ yards

* Includes Binding
** Just Color! Collection
+ Peppered Cottons Collection

Additional Supplies Needed

Batting 66" x 76" (Recommended:
Air Lite® Colour Me 100% Cotton)
Piecing and sewing thread
Quilting and sewing supplies

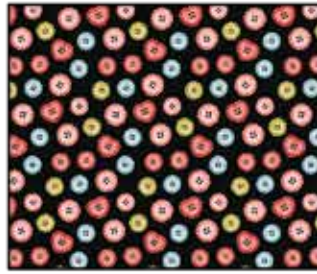
Quilt designed by Heidi Pridemore
Finished Quilt Size 58" x 68"
Skill Level: Advanced Beginner

Please check our website for pattern updates before starting this project.

Fabrics in the Collection



Sewing Machines
Multi – 6616-79



Tossed Buttons
Multi – 6617-98



Tossed Dress Forms
Multi – 6618-79



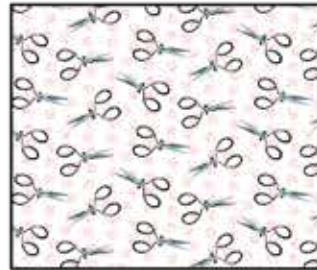
Tossed Floral
Multi – 6619-98



Tossed Pin Cushions
Multi – 6620-80



Tossed Spools & Buttons
Pink – 6621-28



Tossed Scissors
Multi – 6622-72



Tossed Sprigs
Teal – 6623-7



Tossed Strawberries
Multi – 6624-86



Tossed Scissors & Spools
Black – 6625-99

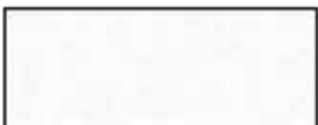


Border Stripe
Multi – 6626-27



Panel 24In x 44In
Multi – 6627P-79

Select Fabrics from Peppered Cottons and Just Color!



Just Color!
Pigment White
1351-Pigment White



Peppered Cottons
Flame
Flame-16

Cutting

Cutting Instructions

Please note: All strips are cut across the width of fabric (WOF) from selvage to selvage edge unless otherwise noted.

WOF= Width of Fabric • LOF = Length of Fabric

Fabric A (6627P-79 Panel 24In x 44In – Multi):

- Fussy cut (1) 23" x 43" rectangle, centered on the panel.

Fabric B (6621-28 Tossed Spools & Buttons – Pink), cut:

- (3) 3" x WOF strips. Sew the strips together end to end with diagonal seams and cut (2) 3" x 43" strips.
- (2) 3" x 28" WOF strips.

Fabric C (6623-7 Tossed Sprigs – Teal), cut:

- (1) 3 ½" x WOF strip, sub-cut (4) 3 ½" squares and (9) 3" squares.
- (1) 3 ½" x WOF strip, sub-cut (7) 3" squares.
- (5) 1 ½" x WOF strips. Sew the strips together end to end with diagonal seams and cut (4) 1 ½" x 47" strips.
- (2) 1 ½" x 39" WOF strips.

Fabric D (6620-80 Tossed Pin Cushions – Multi), cut:

- (3) 4 ½" x WOF strips. Sew the strips together end to end with diagonal seams and cut (2) 4 ½" x 47" strips.

Fabric E (1351-Pigment White Just Color! – Pigment White), cut:

- (3) 1 ½" x WOF strips. Sew the strips together end to end with diagonal seams and cut (2) 1 ½" x 60 ½" strips.
- (3) 1 ½" x WOF strips. Sew the strips together end to end with diagonal seams and cut (2) 1 ½" x 52 ½" strips.
- (3) 1 ¼" x WOF strips. Sew the strips together end to end with diagonal seams and cut (2) 1 ¼" x 49" strips.
- (2) 1 ¼" x 40 ½" WOF strips.

Fabric F (6625-99 Tossed Scissors & Spools – Black), cut:

- (11) 3" x WOF strips, sub-cut (144) 3" squares.

Fabric G (6616-79 Sewing Machines – Multi), cut:

- (3) 5 ½" x WOF strips, sub-cut (16) 5 ½" squares.

Fabric H (6618-79 Dress Forms – Multi), cut:

- (2) 5 ½" x WOF strips, sub-cut (12) 5 ½" squares.

Fabric I (6622-72 Tossed Scissors – Multi), cut:

- (1) 5 ½" x WOF strip, sub-cut (4) 5 ½" squares.

Fabric J (6624-86 Tossed Strawberries – Multi), cut:

- (1) 5 ½" x WOF strip, sub-cut (4) 5 ½" squares.

Fabric K (6617-98 Tossed Buttons – Multi), cut:

- (1) 5 ½" x WOF strip, sub-cut (4) 5 ½" squares.

Fabric L (6619-98 Tossed Floral – Multi), cut:

- (4) 3 ½" x WOF strips. Sew the strips together end to end with diagonal seams and cut (2) 3 ½" x 62 ½" strips.
- (3) 3 ½" x WOF strips. Sew the strips together end to end with diagonal seams and cut (2) 3 ½" x 52 ½" strips.

Fabric M (Flame-16 Peppered Cottons – Flame), cut:

- (7) 2 ½" x WOF strips for the binding.

Backing (6618-79 Tossed Dress Forms – Multi), cut:

- (2) 66" x WOF strips. Sew the strips together and trim to 66" x 76" to make the back.

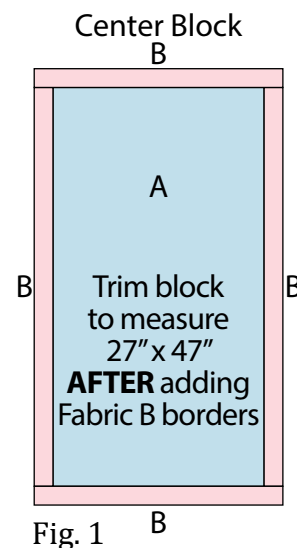
Sewing

Sew using a $\frac{1}{4}$ " seam allowance with right sides together (RST) unless otherwise indicated. Always press towards the darker fabric while assembling, unless otherwise noted by the arrows.

Block Assembly

Note: The arrows in figures represent the fabric print direction. Pay attention to the fabric and unit orientations when assembling the various components.

1. Sew (1) 3" x 43" Fabric B strip to each side of the 23" x 43" Fabric A rectangle.
Sew (1) 3" x 28" Fabric B strip to the top and to the bottom of the Fabric A rectangle to make the Center Block (Fig. 1). **Trim the block to measure 27" x 47".**



2. Place (1) 3" Fabric F square on the top left corner of (1) 5 $\frac{1}{2}$ " Fabric G square, right sides together (Fig. 2). Sew across the diagonal of the smaller square from the upper right corner to the lower left corner (Fig. 2). Flip open the triangle formed and press. Trim away the excess fabric from behind the triangle $\frac{1}{4}$ " away from the sewn seam (Fig. 3).

3. Follow Figure 4 for the seam direction to add a 3" Fabric F square to each of the remaining corners of the 5 $\frac{1}{2}$ " Fabric G square to make (1) Block One square (Fig. 5).

4. Repeat Steps 2-3 to make (16) Block One squares total.

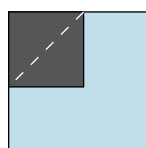


Fig. 2

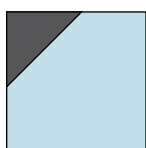


Fig. 3

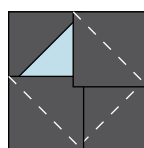


Fig. 4



Fig. 5

5. Repeat Steps 2-3 and refer to Figures 6-9 for fabric identification, placement, seam direction and orientation to make (12) Block Two squares, (4) Block Three squares, (4) Block Four squares and (4) Block Five squares.

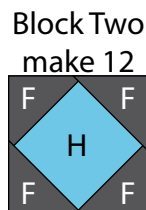


Fig. 6

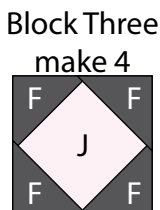


Fig. 7

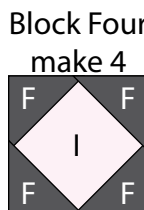


Fig. 8

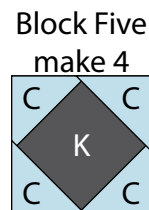


Fig. 9

6. Sew (1) 1 ½" x 47" Fabric C strip to each side of (1) 4 ½" x 47" Fabric D strip lengthwise to make the Inner Side Border (Fig. 10). Repeat to make a second Inner Side Border.

7. Follow Figure 11 and sew together (10) assorted Block squares to make the Outer Left Side Border.

8. Repeat Step 7 and refer to Figures 12-14 for component identification and placement to make the Outer Right Side Border, the Outer Top Border and the Outer Bottom Border.

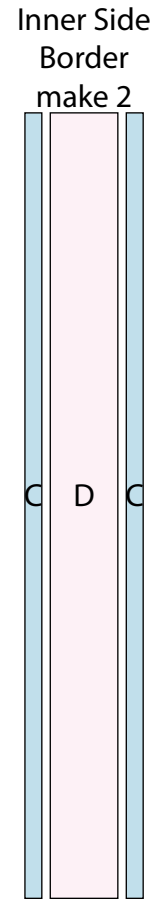


Fig. 10

Outer Left Side Border



Fig. 11

Outer Right Side Border



Fig. 12

Outer Top Border



Fig. 13

Outer Bottom Border



Fig. 14

Quilt Top Assembly

(Follow the Quilt Layout while assembling the quilt top.)

9. Sew (1) Inner Side Border to each side of the Center Block.

10. Sew (1) 1 ½" x 39" Fabric C strip to the top and to the bottom of the Center Block.

11. Sew (1) 1 ¼" x 49" Fabric E strip to each side of the Center Block. Sew (1) 1 ¼" x 40 ½" Fabric E strip to the top and to the bottom of the Center Block.

12. Sew the Outer Left Side Border and Outer Right Side Border to the left and right sides of the Center Block.

13. Sew the Outer Top Border and Outer Bottom Border to the top and to the bottom of the Center Block.
14. Sew (1) 1 ½" x 60 ½" Fabric E strip to each side of the Center Block. Sew (1) 1 ½" x 52 ½" Fabric E strip to the top and to the bottom of the Center Block.
15. Sew (1) 3 ½" x 62 ½" Fabric L strip to each side of the Center Block.
16. Sew (1) 3 ½" Fabric C square to each end of (1) 3 ½" x 52 ½" Fabric L strip. Repeat to make a second strip. Sew the strip to the top and to the bottom of the Center Block to make the quilt top.

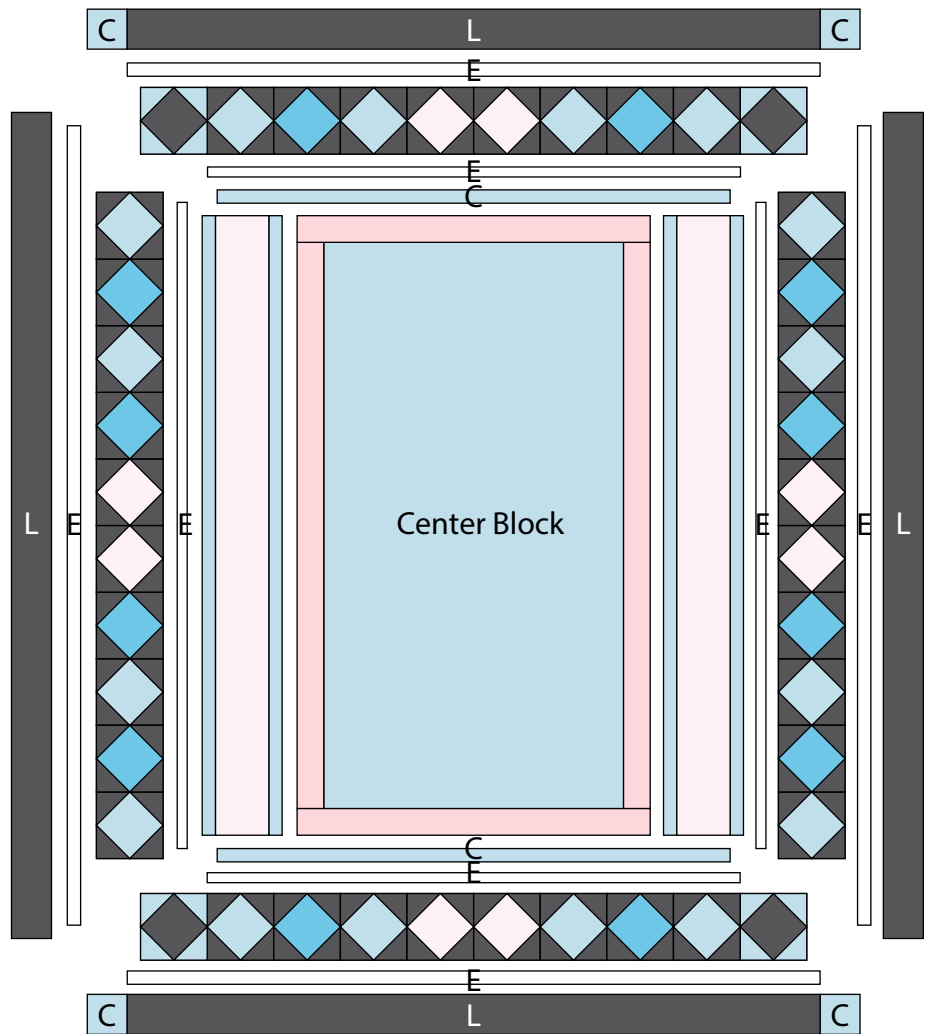
Layering, Quilting and Finishing

17. Press the quilt top and 66" x 76" backing well. Layer backing (wrong side up), batting, pressed quilt top (right side up) and baste. Quilt as desired and trim excess batting and backing when quilting is complete.

Binding

18. Cut the ends of the (7) Fabric M binding strips at a 45-degree angle and sew end to end to make (1) continuous piece of binding. Fold in half lengthwise and press wrong sides together.

19. Sew the binding to the front of the quilt, raw edges together. Turn the folded edge to the back, and hand stitch in place.



Quilt Layout

Every effort has been made to ensure that all projects are error free. All the information is presented in good faith, however no warranty can be given nor results guaranteed as we have no control over the execution of instructions. Therefore, we assume no responsibility for the use of this information or damages that may occur as a result. When errors are brought to our attention, we make every effort to correct and post a revision as soon as possible. Please make sure to check www.studioefabrics.net for pattern updates prior to starting the project. We also recommend that you test the project prior to cutting for kits. Finally, all free projects are intended to remain free to you and are **not for resale**.