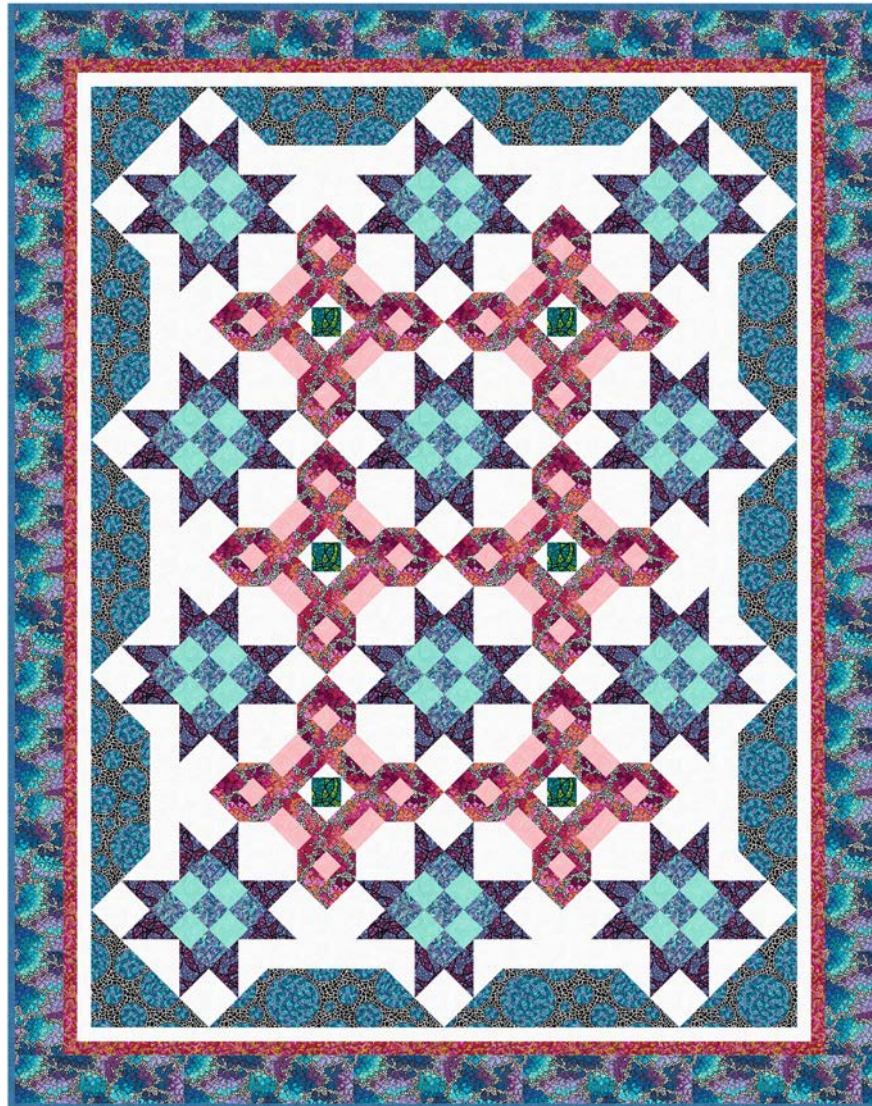


OUTSIDE THE LINES



Featuring fabrics from the **Outside the Lines** collection by Seannessy Rain for **STUDIO C fabrics**

Fabric Requirements

(A) 6174-66	1/4 yard	(K) Just Color!	
(B) Just Color! 1351-Blush	1/3 yard	1351-Pigment White	2-1/8 yards
(C) Just Color! 1351-Lt. Teal	3/8 yard	Back 6180-78	5 yards
(D) 6179-82	3/8 yard		
(E) 6179-71	1/2 yard	*Includes Binding	
(F) 6176-82	2/3 yard		
(G) Just Color! 1351-Denim	2/3 yard		
(H) 6174-55	2/3 yard		
(I) 6176-75	1 yard		
(J) 6175-71	1-1/8 yards		

Additional Supplies Needed

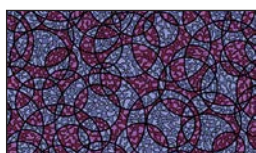
Batting: 71" x 88"
(Recommended: Air Lite® Colour Me 100% Cotton)
Sewing and Quilting thread
Sewing and Quilting supplies
Quilt size: 63" x 80"

Skill Level: Intermediate
Quilt designed by Denise Russell

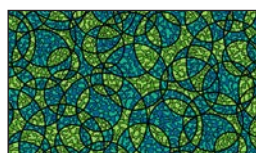
Fabrics in the Collection



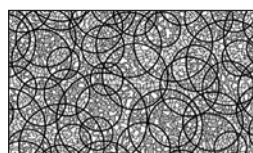
6180-78 2" x 3" Blocks - Multi



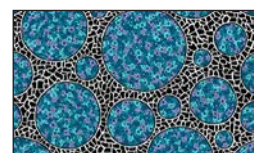
6174-55 Magic Circles
Amethyst



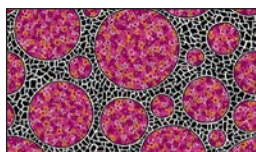
6174-66 Magic Circles
Jade



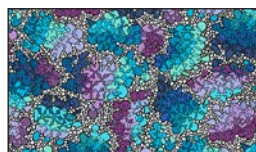
6174-90 Magic Circles
Black/White



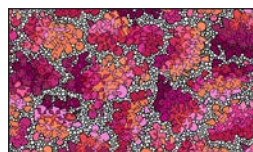
6175-71 Big Dot Floral
Blue



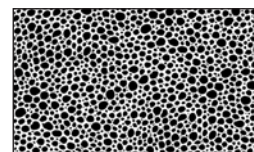
6175-82 Big Dot Floral
Fuchsia/Orange



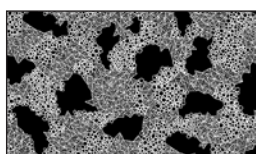
6176-75 Geode Clusters
Blue/Lavender



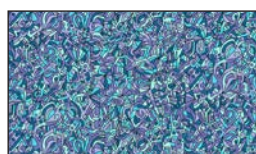
6176-82 Geode Clusters
Fuchsia/Orange



6177-90 Soap Suds Small
Dots - Black/White



6178-90 Black and White
Clusters - Black/White

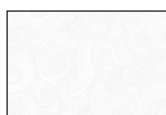


6179-71 Seamless
Doodle - Blue



6179-82 Seamless
Doodle - Fuchsia/Orange

Selected fabrics from the
Just Color! collection



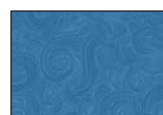
1351
Pigment White



1351
Lt. Teal



1351
Blush



1351
Denim

Cutting

Cutting Instructions

Please note: All strips are cut across the width of the fabric (WOF) from selvage to selvage unless otherwise noted. (WOF = Width of Fabric, LOF = Length of Fabric).

Fabric A (6174-66 Magic Circles – Jade), cut:

*(1) 3-1/2" x WOF strip. Sub-cut (6) 3-1/2" squares.

Fabric B (Just Color! 1351 – Blush), cut:

*(4) 2" x WOF strips.

Fabric C (Just Color! 1351 - Lt. Teal), cut:

*(4) 2-1/2" x WOF strips.

Fabric D (6179-82 Seamless Doodle - Fuchsia/Orange), cut:

*(7) 1-1/2" x WOF strips for border 2.

Fabric E (6179-71 Seamless Doodle – Blue), cut:

*(5) 2-1/2" x WOF strips.

Fabric F (6176-82 Geode Clusters - Fuchsia/Orange), cut:

*(10) 2" x WOF strips. Save (4) strips for strip sets. Sub-cut (4) strips into (72) 2" squares and (2) strips into (24) 2" x 3-1/2" strips.

Fabric G (Just Color! 1351 Denim), cut:

*(8) 2-1/2" x WOF strips for binding.

Fabric H (6174-55 Magic Circles – Amethyst), cut:

*(5) 3-7/8" x WOF strips. Sub-cut (48) 3-7/8" squares.

Fabric I (6176-75 Geode Clusters - Blue/Lavender), cut:

*(8) 4" x WOF strips for border 3.

Fabric J (6175-71 Big Dot Floral – Blue), cut:

*(2) 18-1/4" x WOF strips. Sub-cut:
- (3) 18-1/4" squares; cut diagonally twice (J-1)
- (2) 9-3/8" squares; cut diagonally once (J-2)

Fabric K (Just Color! 1351 Pigment White), cut:

*(6) 2" x WOF strips. Sub-cut (24) 2" x 6-1/2" strips and (24) 2" squares.
*(4) 3-1/2" x WOF strips. Sub-cut (48) 3-1/2" squares.
*(2) 6-1/2" x WOF strips. Sub-cut (10) 6-1/2" squares.

*(3) 7-1/4" x WOF strips. Sub-cut (12) 7-1/4" squares.

*(7) 1-1/2" x WOF strips for border 1.

Block Assembly

1. Sew a 2-1/2" Fabric E strip to opposite sides of a 2-1/2" Fabric C strip. Press the seams away from the center. Repeat to make another strip set. Cross-cut the sets into twenty-four 2-1/2" sections (W). Next, sew a 2-1/2" Fabric C strip to opposite sides of a 2-1/2" Fabric E strip. Press the seams toward the center. Cross-cut this strip set into twelve 2-1/2" sections (X). Sew one W section to the top and one to the bottom of an X section to make a 9-patch unit. Make twelve 6-1/2" units (*figure 1*). Press the seams in one direction.

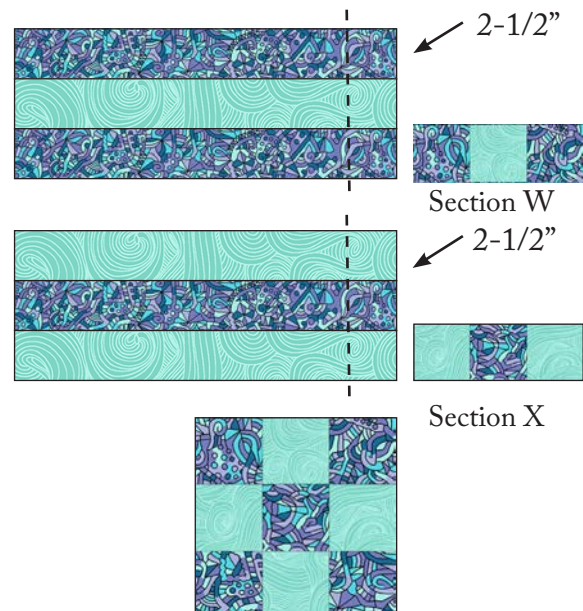


Figure 1 – Make (12) 6-1/2" units.

2. Mark a diagonal line on the wrong side of the 3-7/8" Fabric H squares. With right sides together, place two marked Fabric H squares on opposite corners of one 7-1/4" Fabric K square, making sure drawn lines are intersecting in the middle, and noting that the corners of the small squares will overlap. Stitch 1/4" on each side of the marked line (a), cut on the drawn line (b), and press each unit open (c). Place one more marked Fabric H

Sewing

square on the corner of each unit, stitch as before (d), and cut. Press the seams open (e) to make four $3\frac{1}{2}$ " x $6\frac{1}{2}$ " flying-geese units. Repeat with the remaining $3\frac{7}{8}$ " Fabric H and the $7\frac{1}{4}$ " Fabric K squares to make a total of twenty-four flying-geese units (*figure 2*).

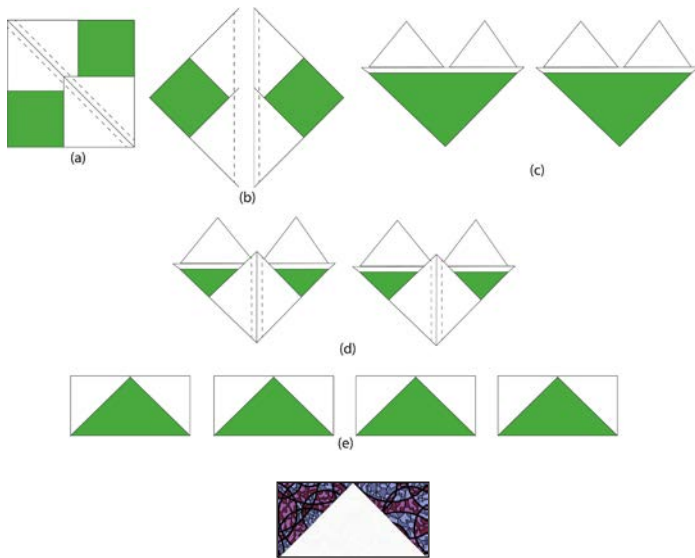


Figure 2 – Make (24) $3\frac{1}{2}$ " x $6\frac{1}{2}$ " units.

3. Sew a Step 2 unit to opposite sides of a Step 1 unit. Press the seams toward the center. Repeat to make twelve center rows. Sew a $3\frac{1}{2}$ " Fabric K square to each end of the remaining Step 2 units and press the seams away from the center. Make twenty-four top/bottom rows. Sew a row to the top and one to the bottom of the center rows to make twelve $12\frac{1}{2}$ " star blocks (*figure 3*). Press the seams toward the center.

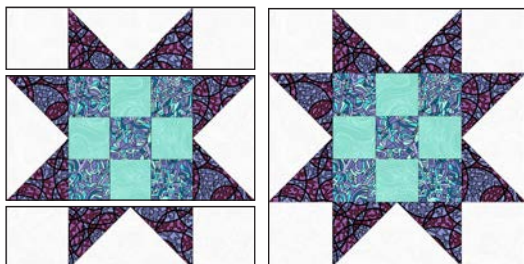


Figure 3 – Make (12) $12\frac{1}{2}$ " blocks.

4. Sew a 2" Fabric F strip to a 2" Fabric B strip. Press the seam toward the dark fabric. Repeat to make another strip set. Cross-cut the strip sets into twenty-four 2 " x $3\frac{1}{2}$ " sections (*figure 4*).



Figure 4 – Make (24) 2 " x $3\frac{1}{2}$ " units.

5. Repeat Step 4 with the remaining 2" Fabric F and Fabric B strips, and cross-cut them into twenty-four $3\frac{1}{2}$ " sections. Sew a 2 " x $3\frac{1}{2}$ " Fabric F strip to opposite sides of **twelve** of these sections and press the seams toward the strip (*figure 5*).



Make (24) $3\frac{1}{2}$ " units.



Make (12) $3\frac{1}{2}$ " x $6\frac{1}{2}$ " units.

Figure 5

6. Draw a diagonal line on the wrong side of the 2" Fabric K squares. With right sides together, place one marked Fabric K square on a corner of one $3\frac{1}{2}$ " Fabric A square and stitch on the drawn line. Repeat with the opposite corner of the same square. Trim seam allowances to $\frac{1}{4}$ " and press open. Repeat with the other corners of the square (*figure 6*). Make six $3\frac{1}{2}$ " units.



Figure 6 – Make (6) $3\frac{1}{2}$ " units.

7. Noting fabric orientation, sew one $3\frac{1}{2}$ " Step 5 section to opposite sides of a Step 6 unit (*figure 7*). Press the seams away from the center. Repeat to make six strips.



Figure 7 – Make (6) $3\frac{1}{2}$ " x $6\frac{1}{2}$ " units.

Sewing

8. Noting fabric orientation, sew a Step 4 unit to opposite ends of the Step 5 strips. Press the seams toward the center. Sew one strip to the top and one to the bottom of the Step 8 strips to make 9-1/2" units (*figure 8*). Press the seams away from the center.

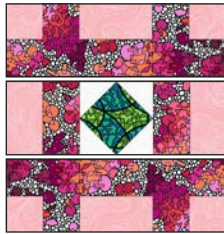


Figure 8

9. Draw a diagonal line on the wrong side of **forty-eight** 2" Fabric F squares. Sew one square to opposite ends of a 2" x 6-1/2" Fabric K strip. Trim seam allowances to 1/4" and press open. Make twenty-four 2" x 6-1/2" strips. Sew one 2" Fabric F square to each end of **twelve** strips (Y), and a 2" x 3-1/2" Fabric F strip to each end of the remaining strips (Z) – *figure 9*.

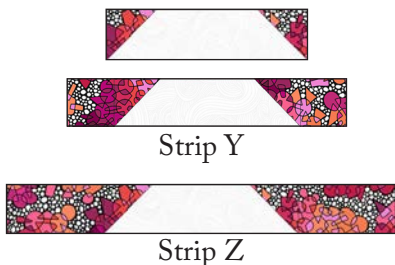


Figure 9 – Make (12) Y and (12) Z strips.

10. Noting fabric orientation, sew a Step 9 strip Y to opposite sides of a Step 8 unit. Press the seams in one direction. Sew a Step 9 strip Z to the top and one to the bottom of each unit to make six 12-1/2" blocks (*figure 10*). Press the seams as before.

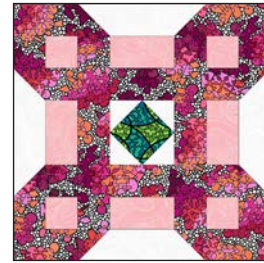


Figure 10 – Make (6) 12-1/2" blocks.

11. Draw a diagonal line on the wrong side of the 6-1/2" Fabric K squares. With right sides together, place one marked Fabric K square on a corner of one Fabric J triangle J-1 and stitch on the drawn line. Trim seam allowances to 1/4" and press open (*figure 11*). Repeat to make ten setting triangles.

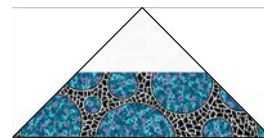


Figure 11 – Make 10.

Quilt Top Assembly

(Follow the quilt diagram and photograph while assembling the quilt top.)

12. Following the photograph and quilt diagram for block placement, lay out six diagonal rows of alternating blocks. Add the Step 11 setting triangles to the beginning and the end of the rows. Sew the setting triangles and blocks together in each row, then matching adjacent seams sew the rows together in order. Press the seams in alternate directions for adjacent rows. Sew one Fabric J triangle J-2 to each quilt top corner.

13. For border 1, sew the seven 1-1/2" Fabric K strips together end to end using diagonal seams. Measure the vertical length of the quilt top through the center and cut two border strips that length. Sew one strip to each side of the quilt top. Measure the width of the quilt top through the center. Cut two border strips that length and sew one to the top and one to the bottom. Press the seams toward the borders.

Sewing Cont.

14. Repeat Step 13 with the seven 1-1/2" Fabric D strips to make and add border 2.

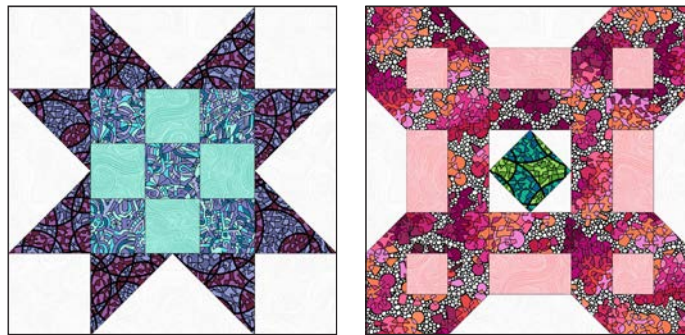
15. Repeat Step 13 with the eight 4" Fabric I strips to make and add border 4.

Layering, Quilting, and Finishing

16. Create a quilt sandwich with the batting between the quilt top and the backing. Pin or baste layers together, mark quilting design, and quilt by hand or machine. When quilting is complete, remove pins or basting and trim batting and backing even with raw edges of the quilt top.

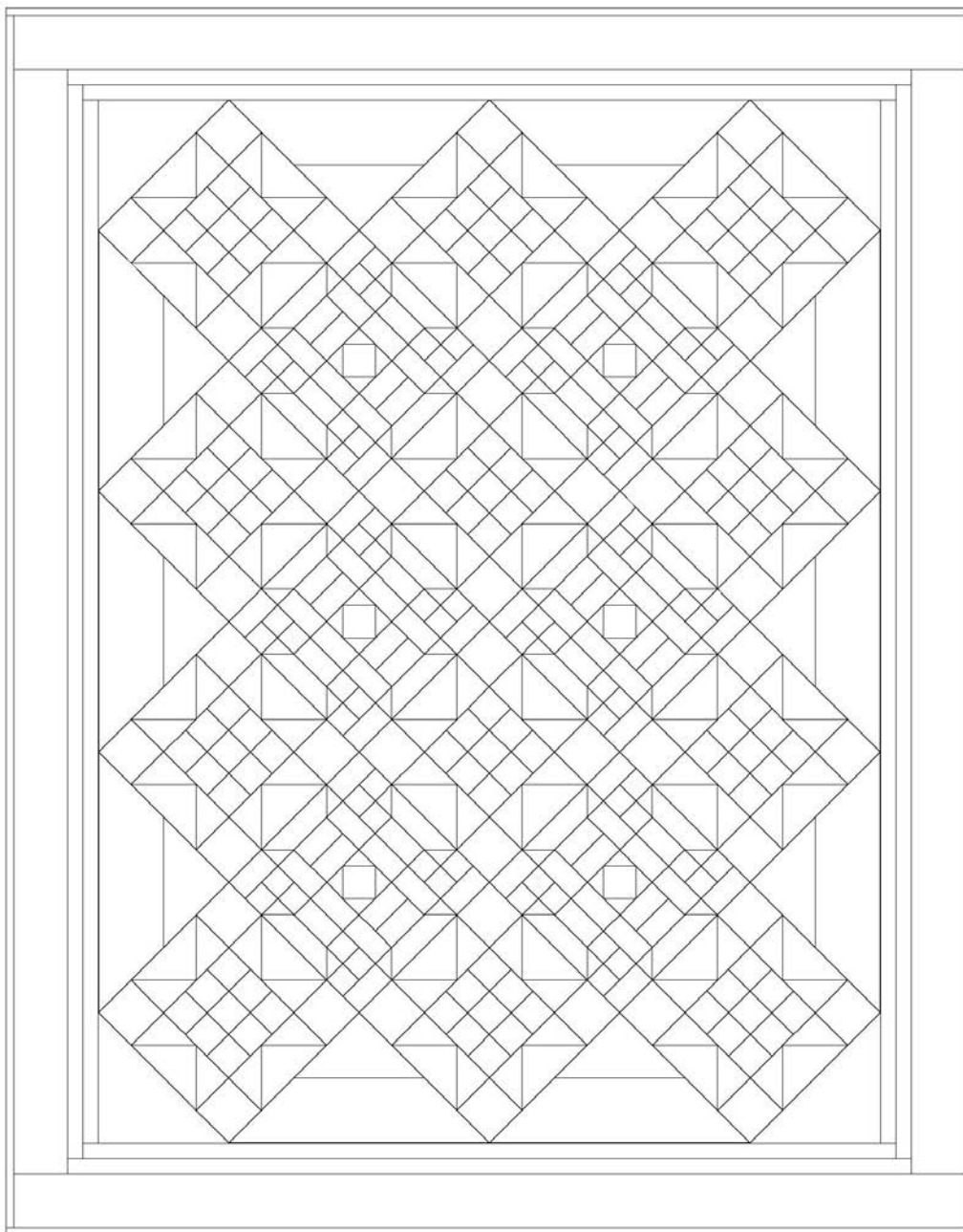
Binding

17. Join the eight 2-1/2" Fabric G binding strips together end to end using a diagonal seam to make one long strip. Fold in half lengthwise and press. Sew binding to the edges of the quilt top, mitering corners, and overlap-ping ends. Fold binding to the back of the quilt and stitch it in place by hand to finish.



©2021 Studio e Fabrics®

Every effort has been made to ensure that all projects are error free. All the information is presented in good faith; however, no warranty can be given nor results guaranteed as we have no control over the execution of instructions. Therefore, we assume no responsibility for the use of this information or damages that may occur as a result. When errors are brought to our attention, we make every effort to correct and post a revision as soon as possible. Please make sure to check www.studioefabrics.net for pattern updates prior to starting the project. We also recommend that you test the project prior to cutting for kits. Finally, all free projects are intended to remain free to you and are not for resale.



Quilt Diagram