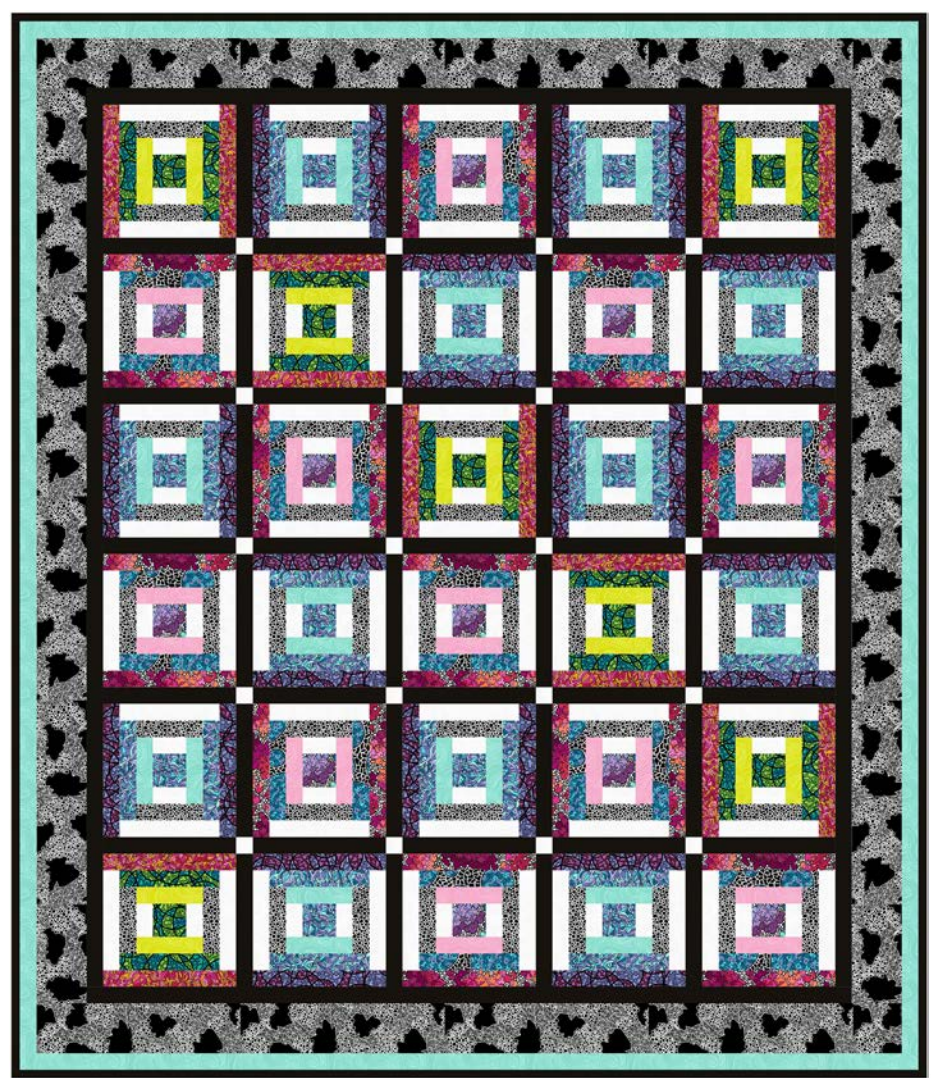


Free Project  
NOT FOR RESALE

QUILT 2

# OUTSIDE THE LINES



Featuring fabrics from the **Outside the Lines** collection by Seannessy Rain for **STUDIO fabrics**

**Fabric Requirements**

- |                                     |          |   |             |
|-------------------------------------|----------|---|-------------|
| (A) Just Color! 1351-Citrus         | 1/8 yard | (K) 6177-90                             | 1/2 yard    |
| (B) 6176-75                         | 1/8 yard | (L) 6178-90                             | 2/3 yard    |
| (C) Just Color!<br>1351 - Carnation | 1/4 yard | (M) Just Color!<br>1351 - Pigment White | 3/4 yard    |
| (D) 6175-71                         | 1/4 yard | (N) Peppered Cottons-98*                | 1-1/4 yards |
| (E) 6179-82                         | 1/4yard  | Back 6180-78                            | 3-5/8 yards |
| (F) 6174-55                         | 1/3 yard |   |             |
| (G) 6174-66                         | 1/3 yard |   |             |
| (H) 6176-82                         | 1/3 yard |   |             |
| (I) 6179-71                         | 1/3 yard |   |             |
| (J) Just Color!<br>1351 - Lt. Teal  | 1/2 yard |   |             |

\*Includes Binding

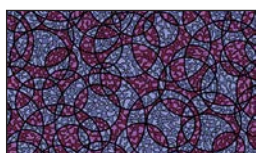
**Additional Supplies Needed**  
 Batting: 63" x 72"  
 (Recommended: Air Lite® Colour Me 100% Cotton)  
 Sewing and Quilting thread  
 Sewing and Quilting supplies  
 Quilt size: 55" x 64"

Skill Level: Advanced Beginner  
 Quilt designed by Denise Russell

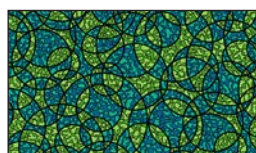
# Fabrics in the Collection



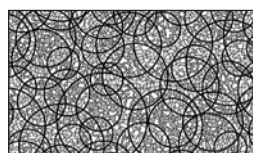
6180-78 2" x 3" Blocks - Multi



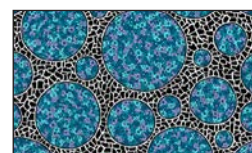
6174-55 Magic Circles  
Amethyst



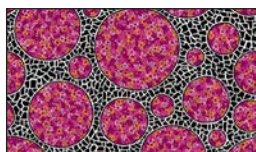
6174-66 Magic Circles  
Jade



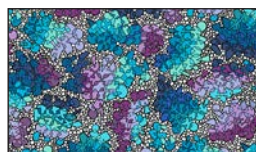
6174-90 Magic Circles  
Black/White



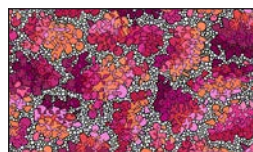
6175-71 Big Dot Floral  
Blue



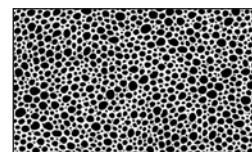
6175-82 Big Dot Floral  
Fuchsia/Orange



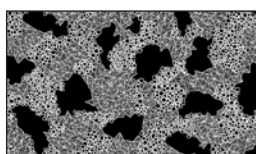
6176-75 Geode Clusters  
Blue/Lavender



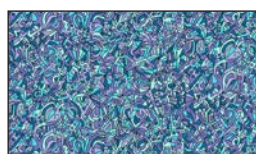
6176-82 Geode Clusters  
Fuchsia/Orange



6177-90 Soap Suds Small  
Dots - Black/White



6178-90 Black and White  
Clusters - Black/White

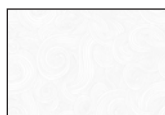


6179-71 Seamless  
Doodle - Blue



6179-82 Seamless  
Doodle - Fuchsia/Orange

Selected fabrics from the  
Just Color! collection



1351  
Pigment White



1351  
Lt. Teal



1351  
Carnation



1351  
Citrus

Selected fabric from the  
Peppered Cotton collection



Deep Space-98

# Cutting

## Cutting Instructions

Please note: All strips are cut across the width of the fabric (WOF) from selvage to selvage unless otherwise noted. (WOF = Width of Fabric, LOF = Length of Fabric).

### Fabric A (Just Color! 1351 - Citrus), cut:

\*(2) 1-1/2" x WOF strips. Sub-cut (14) 1-1/2" x 4-1/2" strips.

### Fabric B (6176-75 Geode Clusters - Blue/Lavender), cut:

\*(1) 2-1/2" x WOF strip. Sub-cut (11) 2-1/2" squares.

### Fabric C (Just Color! 1351 - Carnation), cut:

\*(1) 4-1/2" x WOF strip. Sub-cut (22) 1-1/2" x 4-1/2" strips.

### Fabric D (6175-71 Big Dot Floral – Blue), cut:

\*(1) 6-1/2" x WOF strip. Sub-cut (22) 1-1/2" x 6-1/2" strips.

### Fabric E (6179-82 Seamless Doodle - Fuchsia/Orange), cut:

\*(4) 1-1/2" x WOF strips. Sub-cut (14) 1-1/2" x 8-1/2" strips.

### Fabric F (6174-55 Magic Circles – Amethyst), cut:

\*(1) 8-1/2" x WOF strip. Sub-cut (24) 1-1/2" x 8-1/2" strips.

### Fabric G (6174-66 Magic Circles – Jade), cut:

\*(1) 2-1/2" x WOF strip. Sub-cut (7) 2-1/2" squares.  
\*(3) 1-1/2" x WOF strips. Sub-cut (14) 1-1/2" x 6-1/2" strips.

### Fabric H (6176-82 Geode Clusters - Fuchsia/Orange1), cut:

\*(1) 8-1/2" x WOF strip. Sub-cut (22) 1-1/2" x 8-1/2" strips.

### Fabric I (6179-71 Seamless Doodle – Blue), cut:

\*(1) 2-1/2" x WOF strip. Sub-cut (12) 2-1/2" squares.  
\*(1) 6-1/2" x WOF strip. Sub-cut (24) 1-1/2" x 6-1/2" strips.

### Fabric J (Just Color! 1351 - Lt. Teal), cut:

\*(1) 4-1/2" x WOF strip. Sub-cut (24) 1-1/2" x 4-1/2" strips.  
\*(6) 1-1/2" x WOF strips for border 3.

### Fabric K (6177-90 Soap Suds Small Dots - Black/White), cut:

\*(3) 4-1/2" x WOF strips. Sub-cut (60) 1-1/2" x 4-1/2" strips.

### Fabric L (6178-90 Black and White Clusters - Black/White), cut:

\*(6) 3-1/2" x WOF strips for border 2.

### Fabric M (Just Color! 1351 - Pigment White), cut:

\*(2) 1-1/2" x WOF strips. Sub-cut (20) 1-1/2" squares and (20) 1-1/2" x 2-1/2" strips.  
\*(3) 6-1/2" x WOF strips. Sub-cut (60) 1-1/2" x 6-1/2" strips and (40) 1-1/2" x 2-1/2" strips (for a total of 60).

### Fabric N (Peppered Cottons-98 - Deep Space), cut:

\*(2) 8-1/2" x WOF strips. Sub-cut (49) 1-1/2" x 8-1/2" strips.  
\*(5) 1-1/2" x WOF strips for border 1.  
\*(7) 2-1/2" x WOF strips for binding.

## Block Assembly

1. Sew a 1-1/2" x 2-1/2" Fabric M strip to opposite sides of a 2-1/2" Fabric G square (*figure 1*). Press the seams away from the center. Repeat to make seven 2-1/2" x 4-1/2" units.



Figure 1 – Make (7) 2-1/2" x 4-1/2" units.

2. Sew a 1-1/2" x 4-1/2" Fabric A strip to opposite sides of the Step 1 units. Press the seams away from the

# Sewing

center. Repeat with the 1-1/2" x 4-1/2" Fabric K strips (*figure 2*).

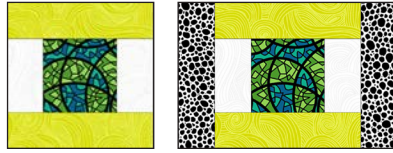


Figure 2

3. Repeat Step 2 with the 1-1/2" x 6-1/2" Fabric G and Fabric M strips (*figure 3*).

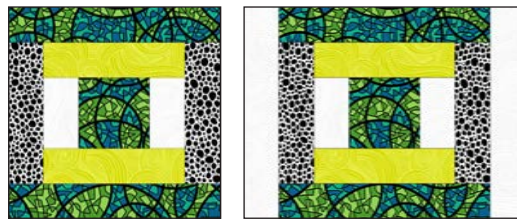


Figure 3

4. Repeat Step 2 with the 1-1/2" x 8-1/2" Fabric E strips to make seven 12-1/2" blocks. (*figure 4*)



Figure 4 – Make (7) 12-1/2" blocks.




 <p><b>Block 1 - Make 7</b> Fabrics: G, M, A, K, and E.</p>	 <p><b>Block 2 - Make 12</b> Fabrics: I, M, J, K, and F.</p>	 <p><b>Block 3 - Make 11</b> Fabrics: B, M, C, K, D, and H.</p>
--	---	--

Table 1. Block quantity and colorway.

5. Repeat Steps 1-4 with the fabrics as listed in Table 1 above to make twenty-three more blocks, for a total of thirty 12-1/2" blocks.

## Sewing

### Quilt Top Assembly

*(Follow the quilt diagram and photograph while assembling the quilt top.)*

6. Referring to the quilt photo for block placement and color orientation, lay out five blocks and the 1-1/2" x 8-1/2" Fabric N sashing strips in six rows, and join the blocks and sashing together in each row. Press the seams toward the sashing.

7. To make the horizontal sashing rows, sew together five 1-1/2" x 8-1/2" Fabric N sashing strips and four 1-1/2" Fabric M cornerstone squares. Repeat to make a total of five sashing strips. Press the seams toward the sashing.

8. Matching adjacent seams, sew block rows and horizontal sashing strips together. Press the seams in one direction.

9. For border 1, sew the five 1-1/2" Fabric N strips together end to end using diagonal seams. Measure the vertical length of the quilt top through the center and cut two border strips that length. Sew one strip to each side of the quilt top. Measure the width of the quilt top through the center. Cut two border strips that

length and sew one to the top and one to the bottom. Press the seams toward the borders.

10. Repeat Step 9 with the six 3-1/2" Fabric L strips to make and add border 2.

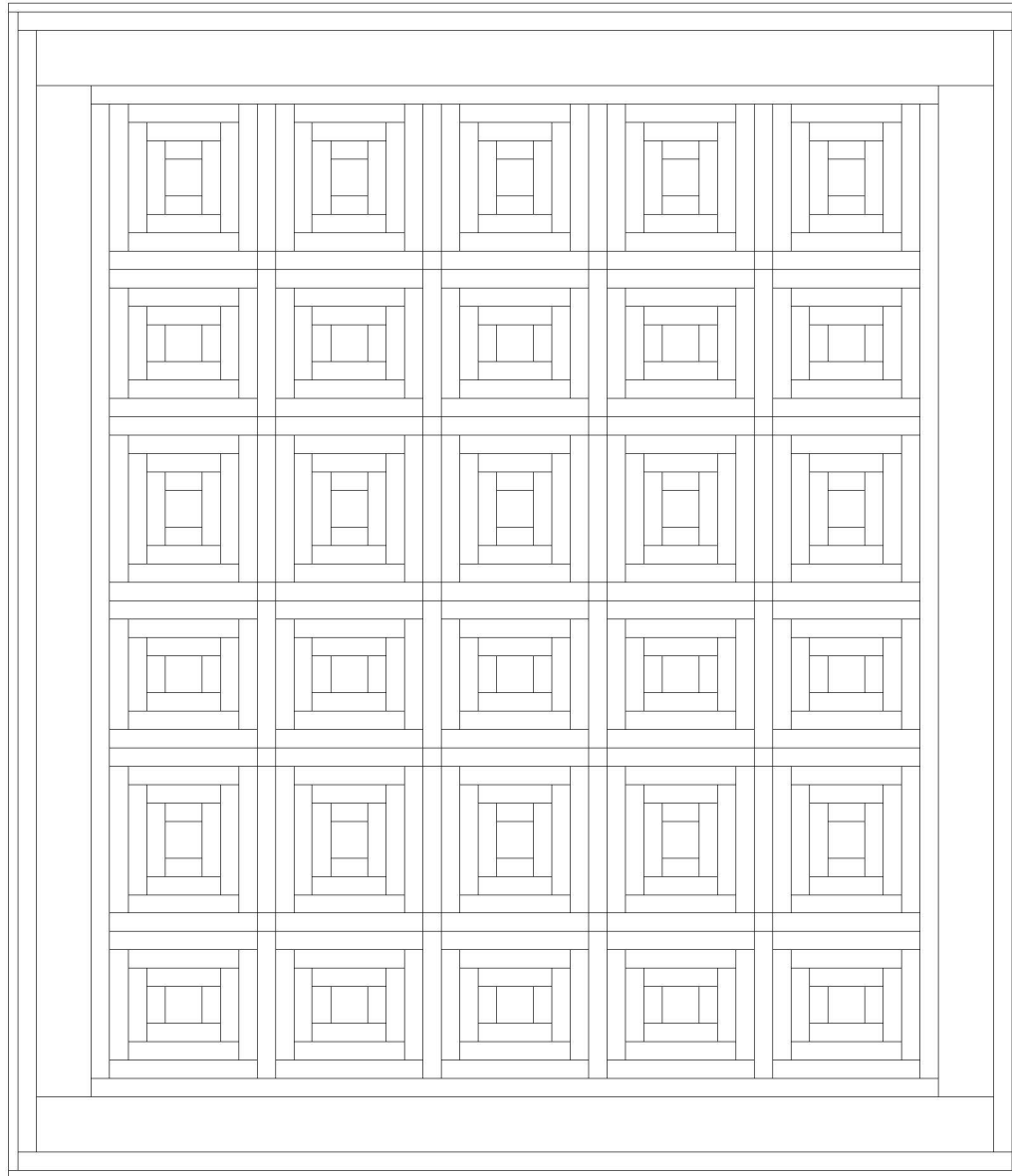
11. Repeat Step 9 with the six 1-1/2" Fabric J strips to make and add border 3.

### Layering, Quilting, and Finishing

12. Create a quilt sandwich with the batting between the quilt top and the backing. Pin or baste layers together, mark quilting design, and quilt by hand or machine. When quilting is complete, remove pins or basting and trim batting and backing even with raw edges of the quilt top.

### Binding

13. Join the seven 2-1/2" Fabric N binding strips together end to end using a diagonal seam to make one long strip. Fold in half lengthwise and press. Sew binding to the edges of the quilt top, mitering corners, and overlapping ends. Fold binding to the back of the quilt and stitch it in place by hand to finish.



Quilt Diagram