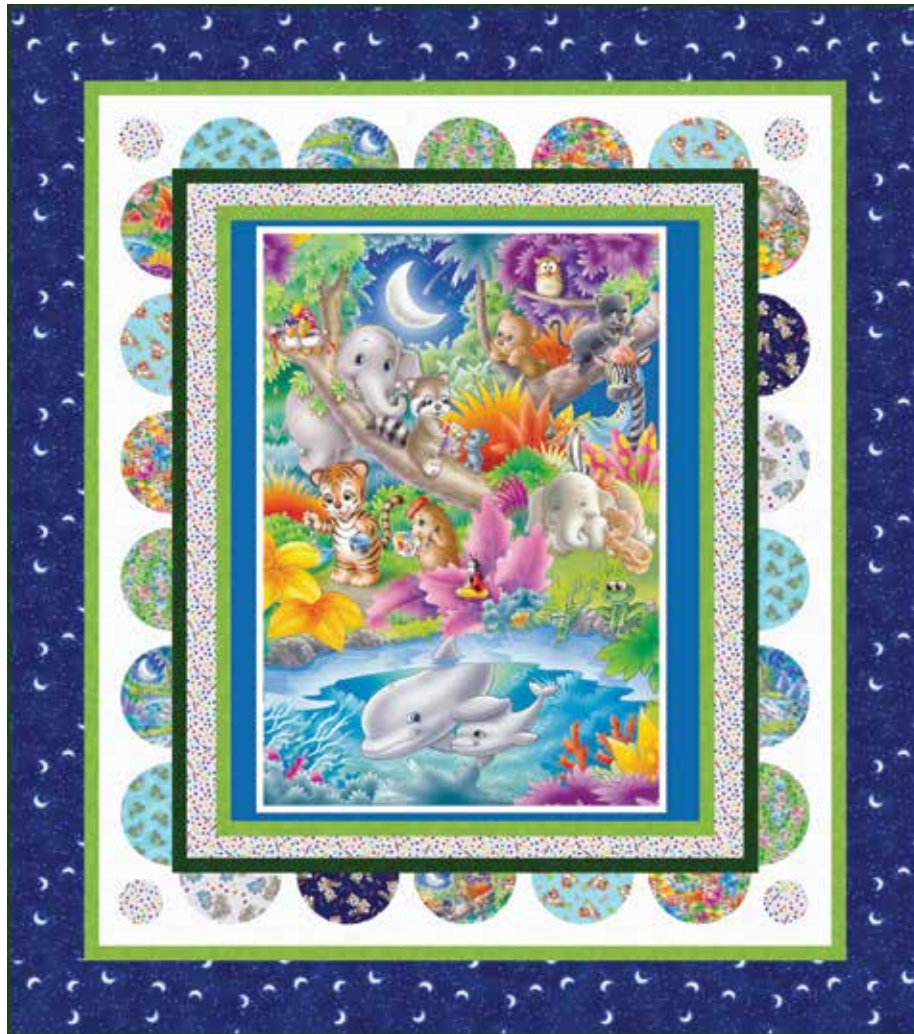


Painting the World

• A Free Project Sheet •
• NOT FOR RESALE •

QUILT 1



Featuring fabrics from the **Painting the World** collection by **Lorella Avinci** for **STUDIO e fabrics**

Fabric Requirements

(A) 6823P-77	1 panel	(J) 6819-16	¼ yard
(B) 1351-Grass**.....	⅝ yard	(K) 6822-78	¼ yard
(C) 1351-Forest**...	⅞ yard*	(L) 6818-35	¼ yard
(D) 6821-35	½ yard	(M) 1351-Pigment White**	1 ⅛ yards
(E) 6815-11	¼ yard	(N) 6812-78	1 ⅓ yards
(F) 6816-17	¼ yard	Backing	
(G) 6813-66	¼ yard	6814-01	4 yards
(H) 6817-16	¼ yard		
(I) 6820-11	¼ yard	* Includes Binding	
		** Just Color! Collection	

Additional Supplies Needed

Batting 70" x 78" (Recommended:
Air Lite® Colour Me 100% Cotton)
Piecing and sewing thread
Quilting and sewing supplies

Quilt designed by Heidi Pridemore
Finished Quilt Size 62" x 70"
Skill Level: Advanced Beginner

Fabrics in the Collection



Tossed Moon
Navy - 6812-78



Koala Climbing Tree
Sage - 6813-66



Tossed Lady Bug on Pencil
White - 6814-01



Tossed Frog
Aqua - 6815-11



Swimming Dolphin
Cyan - 6816-17



Tiger Painting a Flower
Multi - 6817-16



Tossed Elephant
Gray - 6818-35



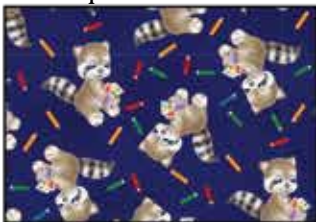
Collage
Multi - 6819-16



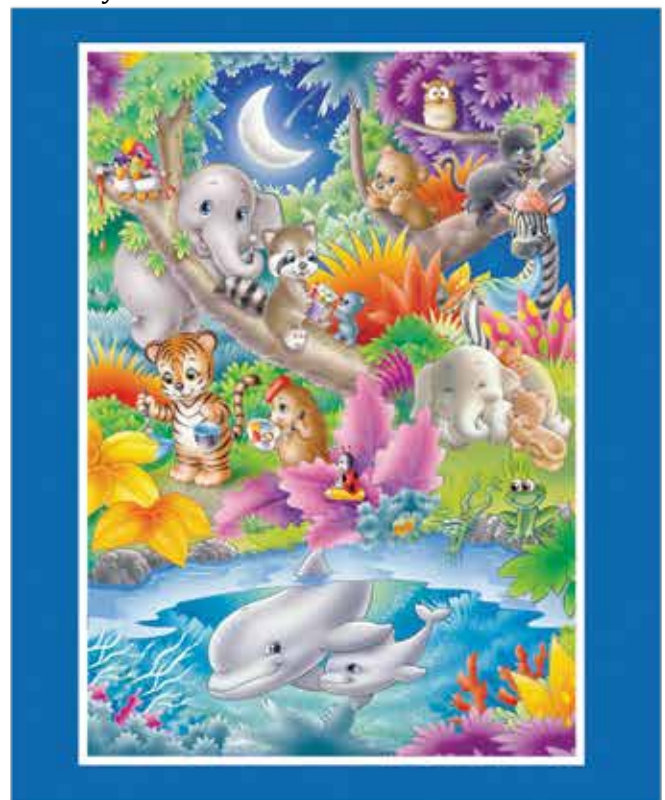
Tossed Parrot
Aqua - 6820-11



Elephant Foot Prints
Gray - 6821-35



Raccoon
Navy - 6822-78



36 Inch Panel
Cyan - 6823P-77

Select Fabrics from Just Color!



Denim
1351-Denim



Forest
1351-Forest



Grass
1351-Grass



Pigment White
1351-Pigment White



Red
1351-Red

Cutting

Cutting Instructions

Please note: All strips are cut across the width of fabric (WOF) from selvage to selvage edge unless otherwise noted.

WOF= Width of Fabric • LOF = Length of Fabric

Fabric A (6823P-77 36 Inch Panel – Cyan):

- Fussy cut (1) 32 ½" x 41 ½" rectangle, centered on the panel.

Fabric B (1351-Grass Just Color! – Grass), cut:

- (2) 2" x 41 ½" WOF strips.
- (2) 2" x 35 ½" WOF strips.
- (3) 1 ½" x WOF strips. Sew the strips together end to end with diagonal seams and cut (2) 1 ½" x 58 ½" strips.
- (3) 1 ½" x WOF strips. Sew the strips together end to end with diagonal seams and cut (2) 1 ½" x 52 ½" strips.

Fabric C (1351-Forest Just Color! – Forest), cut:

- (3) 1 ½" x WOF strips. Sew the strips together end to end with diagonal seams and cut (2) 1 ½" x 46 ½" strips.
- (2) 1 ½" x 40 ½" WOF strips.
- (7) 2 ½" x WOF strips for the binding.

Fabric D (6821-35 Elephant Foot Prints – Gray), cut:

- (3) 2 ½" x WOF strips. Sew the strips together end to end with diagonal seams and cut (2) 2 ½" x 43 ½" strips.
- (2) 2" x 38 ½" WOF strips.
- (4) 3" Circles.

Fabric E (6815-11 Tossed Frog – Aqua), cut:

- (3) Half-Circles.

Fabric F (6816-17 Swimming Dolphin – Cyan), cut:

- (3) Half-Circles (Pay attention to direction of fabric (2 & 1).

Fabric G (6813-66 Koala Climbing Tree – Sage), cut:

- (3) Half-Circles (Pay attention to direction of fabric (2 & 1).

Fabric H (6817-16 Tiger Painting a Flower – Multi), cut:

- (3) Half-Circles (Pay attention to direction of fabric (1 & 2).

Fabric I (6820-11 Tossed Parrot – Aqua), cut:

- (3) Half-Circles.

Fabric J (6819-16 Collage – Multi), cut:

- (3) Half-Circles (Pay attention to direction of fabric (2 & 1).

Fabric K (6822-78 Raccoon – Navy), cut:

- (2) Half-Circles.

Fabric L (6818-35 Tossed Elephant – Gray), cut:

- (2) Half-Circles.

Fabric M (1351-Pigment White Just Color! – Pigment White), cut:

- (1) 4 ½" x WOF strip. Sub-cut (4) 4 ½" squares.
- (3) 4 ½" x WOF strips. Sew the strips together end to end with the diagonal seams and cut (2) 4 ½" x 48 ½" strips.
- (2) 4 ½" x 40 ½" WOF strips.
- (3) 1 ½" x WOF strips. Sew the strips together end to end with the diagonal seams and cut (1) 1 ½" x 56 ½" strips.
- (3) 1 ½" x WOF strips. Sew the strips together end to end with the diagonal seams and cut (1) 1 ½" x 50 ½" strips.

Cutting - Continued

Fabric N (6812-78 Tossed Moon – Navy), cut:

- (3) 5 ½" x WOF strips. Sew the strips together end to end with the diagonal seams and cut (1) 5 ½" x 60 ½" strips.
- (4) 5 ½" x WOF strips. Sew the strips together end to end with the diagonal seams and cut (1) 5 ½" x 62 ½" strips.

Backing (6814-01 Tossed Ladybug on Pencil – White), cut:

- (2) 70" x WOF strips. Sew the strips together and trim to 70" x 78" to make the back.

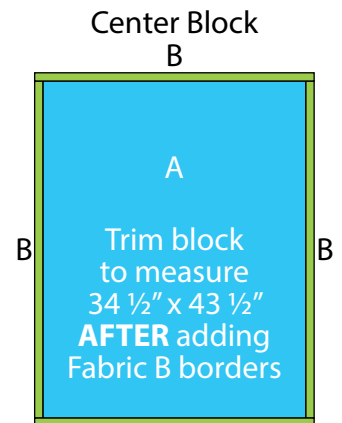
Sewing

Sew using a ¼" seam allowance with right sides together (RST) unless otherwise indicated. Always press towards the darker fabric while assembling, unless otherwise noted by the arrows.

Block Assembly

Note: The arrows in figures represent the fabric print direction. Pay attention to the fabric and unit orientations when assembling the various components.

1. Sew (1) 2" x 41 ½" Fabric B strips to each side of the 32 ½" x 41 ½" Fabric A rectangle. Sew (1) 2" x 35 ½" Fabric B strip to the top and to the bottom of the Fabric A rectangle to make the Center Block (Fig. 1). **Trim the block to measure 34 ½" x 43 ½"**.

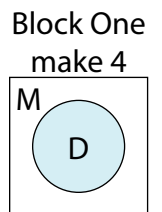


2. Following the manufacturer's instructions, trace the listed number of each template onto the paper side of the fusible web. Roughly cut out each template about 1/8" outside the drawn lines.

3. Press each template onto the wrong side of the fabrics as listed on the templates. Cut out each template on the drawn lines.

4. Refer to Figure 2 to arrange and press (1) Fabric D circle onto (1) 4 ½" Fabric M square.

5. Finish the raw edges of the circle with a decorative stitch such as a buttonhole or satin stitch to make (1) Block One square.



6. Repeat Steps 4-5 to make (4) Block One squares total.

7. Repeat Steps 4-5 and refer to Figure 3 for fabric identification, placement and orientation while adding (6) assorted half-circles to (1) 4 ½" x 48 ½" Fabric M strip to make the Left Side Border.

8. Repeat Steps 4-5 and refer to Figure 4 for fabric identification, placement and orientation while adding (6) assorted half-circles to (1) 4 ½" x 48 ½" Fabric M strip to make the Right Side Border.

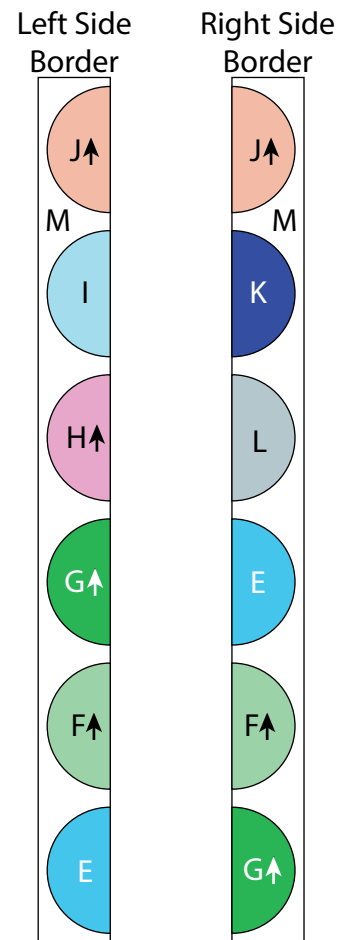


Fig. 3

Fig. 4

9. Repeat Steps 4-5 and refer to Figure 5 for fabric identification, placement and orientation while adding (5) assorted half-circles to (1) 4 ½" x 40 ½" Fabric M strip. Sew (1) Block One square to each end of the newly sewn strip to make the Top Border.



Fig. 5

10. Repeat Steps 4-5 and refer to Figure 6 for fabric identification, placement and orientation while adding (5) assorted half-circles to (1) 4 ½" x 40 ½" Fabric M strip. Sew (1) Block One square to each end of the newly sewn strip to make the Bottom Border.

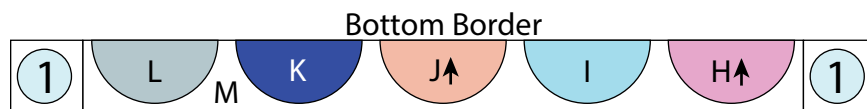


Fig. 6

Quilt Top Assembly

(Follow the Quilt Layout while assembling the quilt top.)

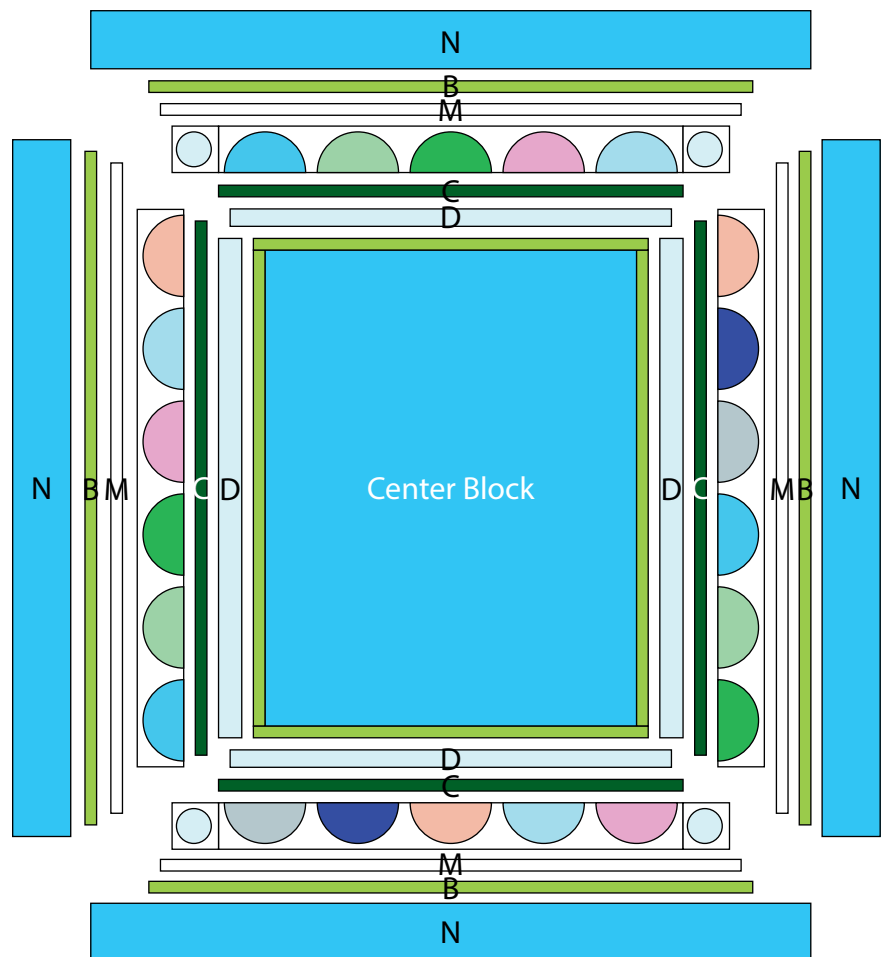
11. Sew 2 ½" x 43 ½" Fabric D strip to each side of the Center Block. Sew (1) 2" x 38 ½" Fabric D strip to the top and to the bottom of the Center Block.
12. Sew (1) 1 ½" x 46 ½" Fabric C strip to each side of the Center Block. Sew (1) 1 ½" x 40 ½" Fabric C strip to the top and to the bottom of the Center Block.
13. Sew the Left Side Border and Right Side Border to the left and to the right sides of the Center Block. Sew the Top Border and Bottom Border to the top and to the bottom of the Center Block.
15. Sew (1) 1 ½" x 56 ½" Fabric M strip to each side of the Center Block. Sew (1) 1 ½" x 50 ½" Fabric M strip to the top and to the bottom of the Center Block.
16. Sew (1) 1 ½" x 58 ½" Fabric B strip to each side of the Center Block. Sew (1) 1 ½" x 52 ½" Fabric B strip to the top and to the bottom of the Center Block.
17. Sew (1) 5 ½" x 60 ½" Fabric N strip to each side of the Center Block. Sew (1) 5 ½" x 62 ½" Fabric N strip to the top and to the bottom of the Center Block to make the quilt top.

Layering, Quilting and Finishing

18. Press the quilt top and 70" x 78" backing well. Layer backing (wrong side up), batting, pressed quilt top (right side up) and baste. Quilt as desired and trim excess batting and backing when quilting is complete.

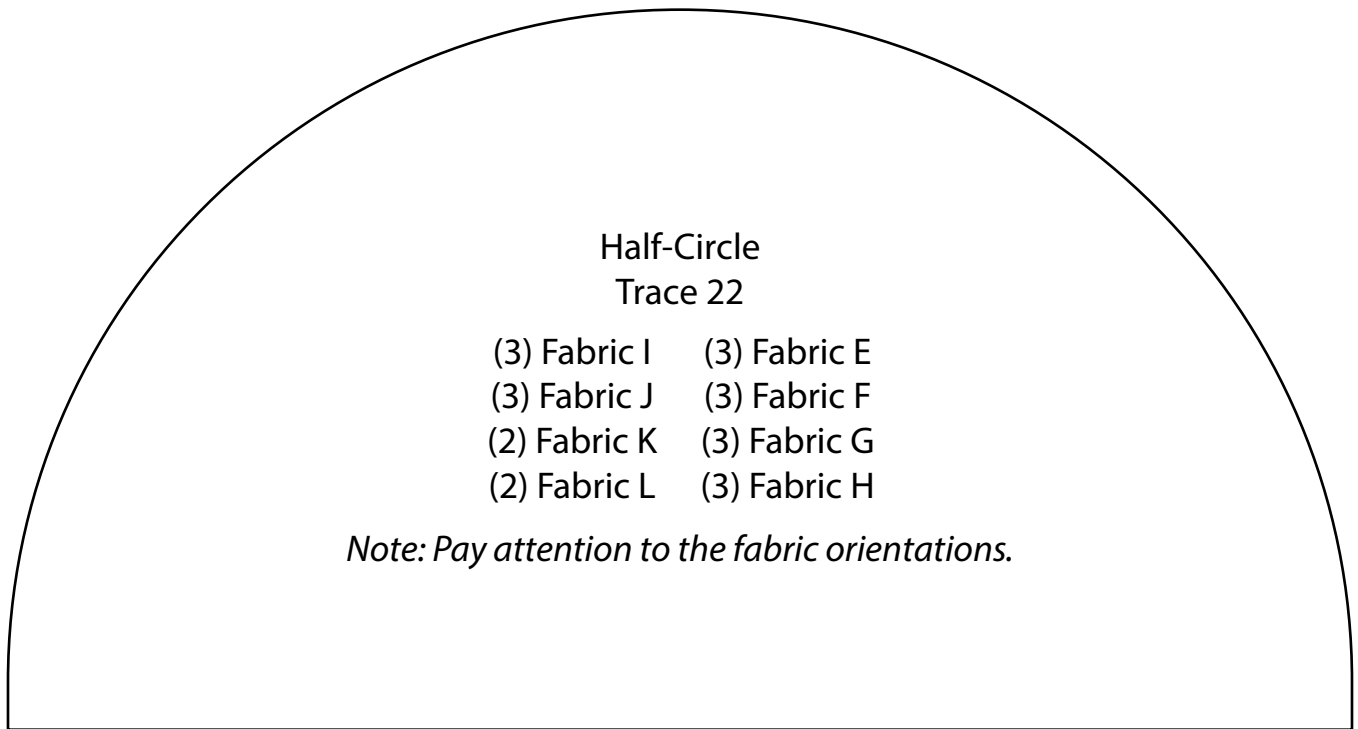
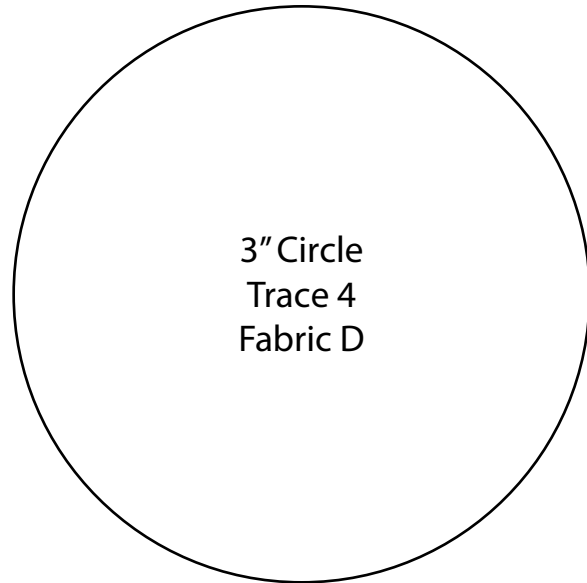
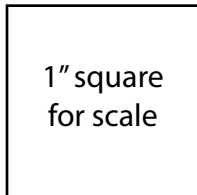
Binding

19. Cut the ends of the (7) Fabric C binding strips at a 45-degree angle and sew end to end to make (1) continuous piece of binding. Fold in half lengthwise and press wrong sides together.
20. Sew the binding to the front of the quilt, raw edges together. Turn the folded edge to the back, and hand stitch in place.



Quilt Layout

100% Templates



*Every effort has been made to ensure that all projects are error free. All the information is presented in good faith, however no warranty can be given nor results guaranteed as we have no control over the execution of instructions. Therefore, we assume no responsibility for the use of this information or damages that may occur as a result. When errors are brought to our attention, we make every effort to correct and post a revision as soon as possible. Please make sure to check www.studioefabrics.net for pattern updates prior to starting the project. We also recommend that you test the project prior to cutting for kits. Finally, all free projects are intended to remain free to you and are **not for resale**.*