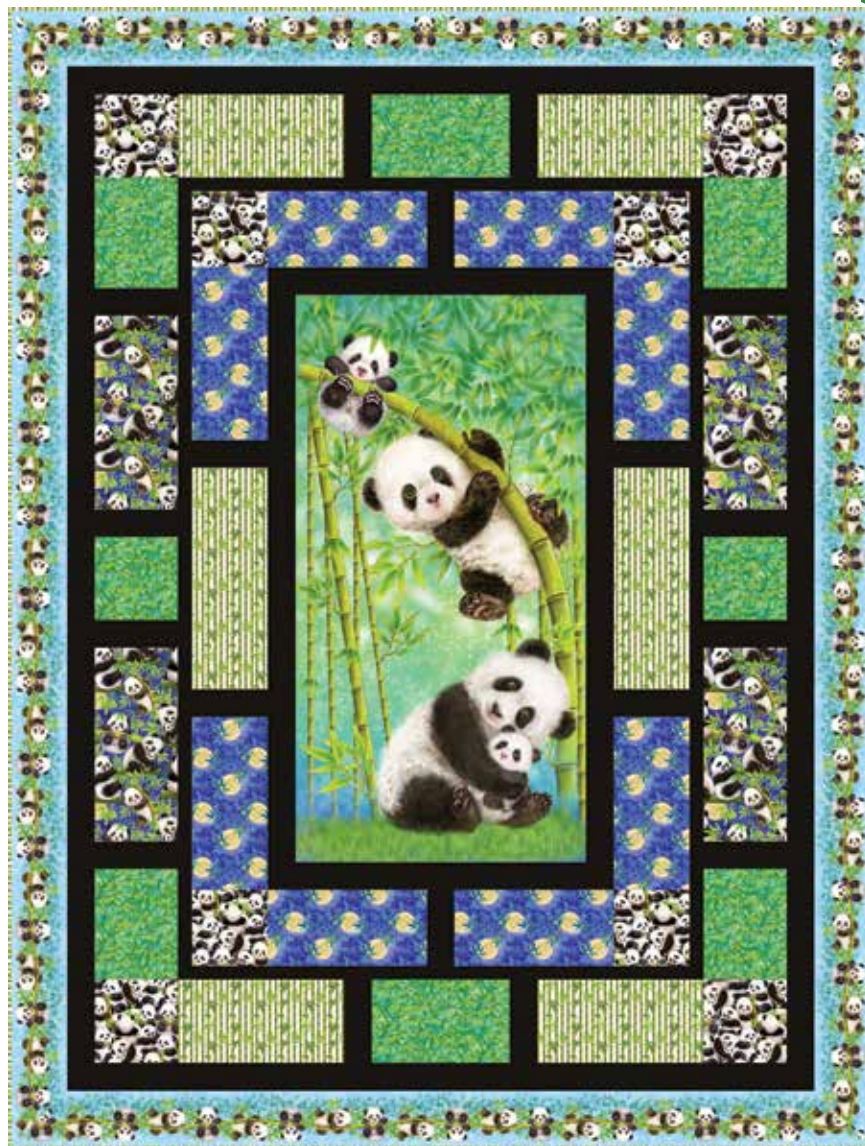


A Free Project Sheet
NOT FOR RESALE

Panda Sanctuary

QUILT 1



Featuring fabrics from the **Panda Sanctuary** collection by **Kayomi Harai** for **STUDIO·e·fabrics**

Fabric Requirements

(A) 5276P-61	1 panel
(B) Deep Space-98**	1 3/8 yards
(C) 5270-77	2/3 yard
(D) 5269-1	1/2 yard
(E) 5274-66	1/2 yard
(F) 5273-1	1 1/8 yards*
(G) 5267-11	2 1/2 yards
(H) 5266-77	1/2 yard

Backing	
5270-77	5 yards

* Includes Binding
** Peppered Cottons Collection

Additional Supplies Needed

Batting 70" x 90" (Recommended:
Air Lite® Colour Me 100% Cotton)
Piecing and sewing thread
Quilting and sewing supplies

Quilt designed by Heidi Pridemore
Finished Quilt Size 62" x 82"
Skill Level: Beginner

Please check our website for pattern updates before starting this project.

Fabrics in the Collection



Panda Scenic - Royal
5266-77



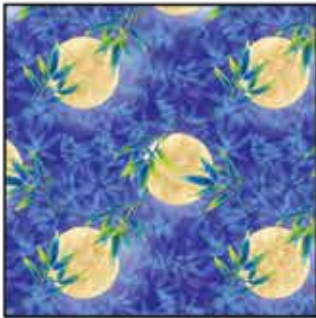
Border Stripe - Blue
5267-11



Tossed Allover Panda - Blue
5268-11



Packed Panda - White
5269-1



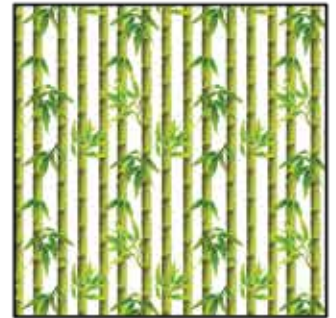
Full Moon - Royal
5270-77



Large Floral - Purple
5271-55



Small Floral - Cyan
5272-17



Bamboo Tree - White
5273-1



Leaf Texture - Green
5274-66

Select Fabrics from
Just Color! and
Peppered Cottons



Just Color!
Pigment White
1351-Pigment White



Peppered Cottons
Deep Space
Deep Space-98



Block Panel - Blue
5275P-11



Panda Banner Panel - Teal
5276P-61

Cutting

Cutting Instructions

Please note: All strips are cut across the width of fabric (WOF) from selvage to selvage edge unless otherwise noted.

WOF= Width of Fabric • LOF = Length of Fabric

Fabric A (5276P-61 Panda Banner Panel – Teal):

- Fussy cut (1) 21 ½" x 41 ½" WOF strip, centered on the panel.

Fabric B (Deep Space-98 Pepper Cottons – Deep Space), cut:

- (2) 3" x 41 ½" WOF strips.
- (2) 3" x 26 ½" WOF strips.
- (1) 2 ½" x WOF strip, sub-cut (6) 2 ½" x 6" strips.
- (2) 2 ½" x WOF strips, sub-cut (12) 2 ½" x 6 ½" strips.
- (4) 2 ½" x WOF strips. Sew the strips together end to end with diagonal seams and cut (2) 2 ½" x 70 ½" strips.
- (3) 2 ½" x WOF strips. Sew the strips together end to end with diagonal seams and cut (2) 2 ½" x 54 ½" strips.
- (3) 1 ½" x WOF strips. Sew the strips together end to end with diagonal seams and cut (2) 1 ½" x 56 ½" strips.
- (2) 1 ½" x 38 ½" WOF strips.

Fabric C (5270-77 Full Moon – Royal), cut:

- (3) 6" x WOF strips, sub-cut (4) 6" x 13" strips and (4) 6" x 12" strips.

Fabric D (5269-1 Packed Panda – White), cut:

- (1) 6 ½" x WOF strip, sub-cut (4) 6 ½" squares.
- (1) 6" x WOF strip, sub-cut (4) 6" squares.

Fabric E (5274-66 Leaf Texture – Green), cut:

- (1) 6 ½" x WOF strip, sub-cut (4) 6 ½" x 8 ½" strips.
- (1) 6 ½" x WOF strip, sub-cut (2) 6 ½" x 10 ½" strips and (2) 6 ½" squares.

Fabric F (5273-1 Bamboo Tree – White), cut:

- (1) 16 ½" x WOF strip, sub-cut (2) 16 ½" x 6" strips and (4) 6 ½" x 12 ½" strips.
- (8) 2 ½" x WOF strips for the binding.

Fabric G (5267-11 Border Stripe – Blue), fussy cut:

- (2) 4 ½" x 86" LOF strips, each centered on a row of pandas.
- (2) 4 ½" x 66" LOF strips, each centered on a row of pandas.

Fabric H (5266-77 Panda Scenic – Royal), cut:

- (1) 14 ½" x WOF strip, sub-cut (4) 14 ½" x 6 ½" strips.

Backing (5270-77 Full Moon – Royal), cut:

- (2) 90" x WOF strips. Sew the strips together and trim to 70" x 90" to make the back.

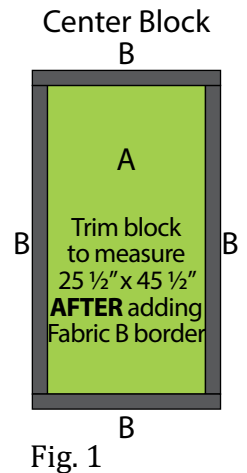
Sewing

Sew using a $\frac{1}{4}$ " seam allowance with right sides together (RST) unless otherwise indicated. Always press towards the darker fabric while assembling, unless otherwise noted by the arrows.

Block Assembly

Note: The arrows in figures represent the fabric print direction. Pay attention to the fabric and unit orientations when assembling the various components.

1. Sew (1) $3'' \times 41\frac{1}{2}''$ Fabric B strip to each side of the $21\frac{1}{2}'' \times 41\frac{1}{2}''$ Fabric A panel. Sew (1) $3'' \times 26\frac{1}{2}''$ Fabric B strip to the top and to the bottom of the Fabric A panel.
Trim the block to measure $25\frac{1}{2}'' \times 45\frac{1}{2}''$ to make the Center Block (Fig. 1).



2. Sew together (1) $6'' \times 13''$ Fabric C strip, (1) $2\frac{1}{2}'' \times 6''$ Fabric B strip, (1) $6'' \times 16\frac{1}{2}''$ Fabric F strip, (1) $2\frac{1}{2}'' \times 6''$ Fabric B strip and (1) $6'' \times 13''$ Fabric C strip, in that order from top to bottom, to make (1) Inner Side Border (Fig. 2). Repeat to make a second Inner Side Border.

3. Sew together (1) $6''$ Fabric D square, (1) $6'' \times 12''$ Fabric C strip, (1) $2\frac{1}{2}'' \times 6''$ Fabric B strip, (1) $6'' \times 12''$ Fabric C strip and (1) $6''$ Fabric D square, in that order from left to right, to make the Inner Top Border (Fig. 3). Repeat to make the Inner Bottom Border.

4. Sew together (1) $6\frac{1}{2}'' \times 8\frac{1}{2}''$ Fabric E strip, (1) $2\frac{1}{2}'' \times 6\frac{1}{2}''$ Fabric B strip, (1) $6\frac{1}{2}'' \times 14\frac{1}{2}''$ Fabric H strip, (1) $2\frac{1}{2}'' \times 6\frac{1}{2}''$ Fabric B strip, (1) $6\frac{1}{2}''$ Fabric E square, (1) $2\frac{1}{2}'' \times 6\frac{1}{2}''$ Fabric B strip, (1) $6\frac{1}{2}'' \times 14\frac{1}{2}''$ Fabric H strip, (1) $2\frac{1}{2}'' \times 6\frac{1}{2}''$ Fabric B strip and (1) $6\frac{1}{2}'' \times 8\frac{1}{2}''$ Fabric E strip, in that order from top to bottom, to make the Outer Side Border (Fig. 4). Repeat to make a second Outer Side Border.

Inner
Side Border
make 2



Fig. 2

Inner Top/Bottom Border
make 2

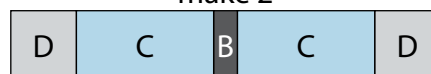


Fig. 3

Outer
Side Border
make 2

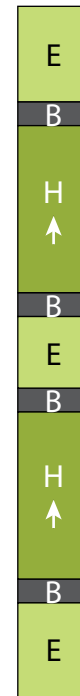


Fig. 4

5. Sew together (1) 6 ½" Fabric D square, (1) 6 ½" x 12 ½" Fabric F strip, (1) 2 ½" x 6 ½" Fabric B strip, (1) 6 ½" x 10 ½" Fabric E strip, (1) 2 ½" x 6 ½" Fabric B strip, (1) 6 ½" x 12 ½" Fabric F strip and (1) 6 ½" Fabric D square, in that order from left to right, to make the Outer Top Border (Fig. 5). Repeat to make the Outer Bottom Border.

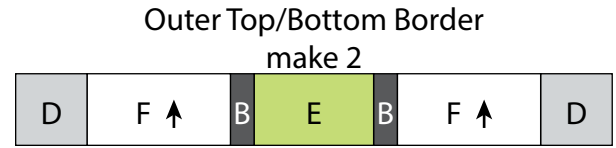


Fig. 5

Quilt Top Assembly

(Follow the Quilt Layout while assembling the quilt top.)

6. Sew the Inner Side, Top and Bottom Borders to the Center Block.

7. Sew (1) 1 ½" x 56 ½" Fabric B strip to each side of the Center Block. Sew (1) 1 ½" x 38 ½" Fabric B strip to the top and to the bottom of the Center Block.

8. Sew the Outer Side, Top and Bottom Borders to the Center Block.

9. Sew (1) 2 ½" x 70 ½" Fabric B strip to each side of the Center Block. Sew (1) 2 ½" x 54 ½" Fabric B strip to the top and to the bottom of the Center Block.

10. Center (1) 4 ½" x 86" Fabric G strip on (1) side of the Center Block and pin in place. Start sewing the strip a ¼" from the top edge of the block and stop a ¼" from the bottom edge. **DO NOT TRIM THE EXCESS.** Repeat with the opposite side.

11. Repeat Step 10 to sew (1) 4 ½" x 66" Fabric G strip to the top and to the bottom of the Center Block, making sure to stop and start ¼" away from each end of the block. To miter each corner, fold the Center Block on a diagonal, wrong side together. This should line up the strips from adjacent sides (Fig. 6).

12. Starting at the sewn seam (represented by the arrow in Figure 6), draw a 45-degree line to the edge of the fabric. Sew on the drawn line. Trim the excess fabric leaving a ¼" seam. Repeat this step with the remaining corners to make the quilt top.

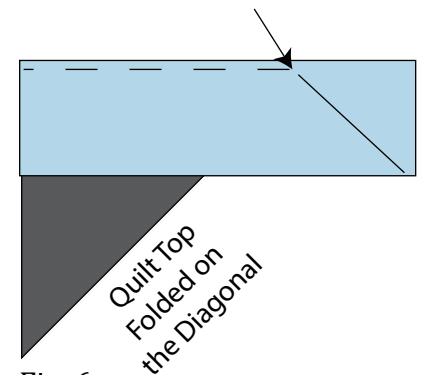


Fig. 6

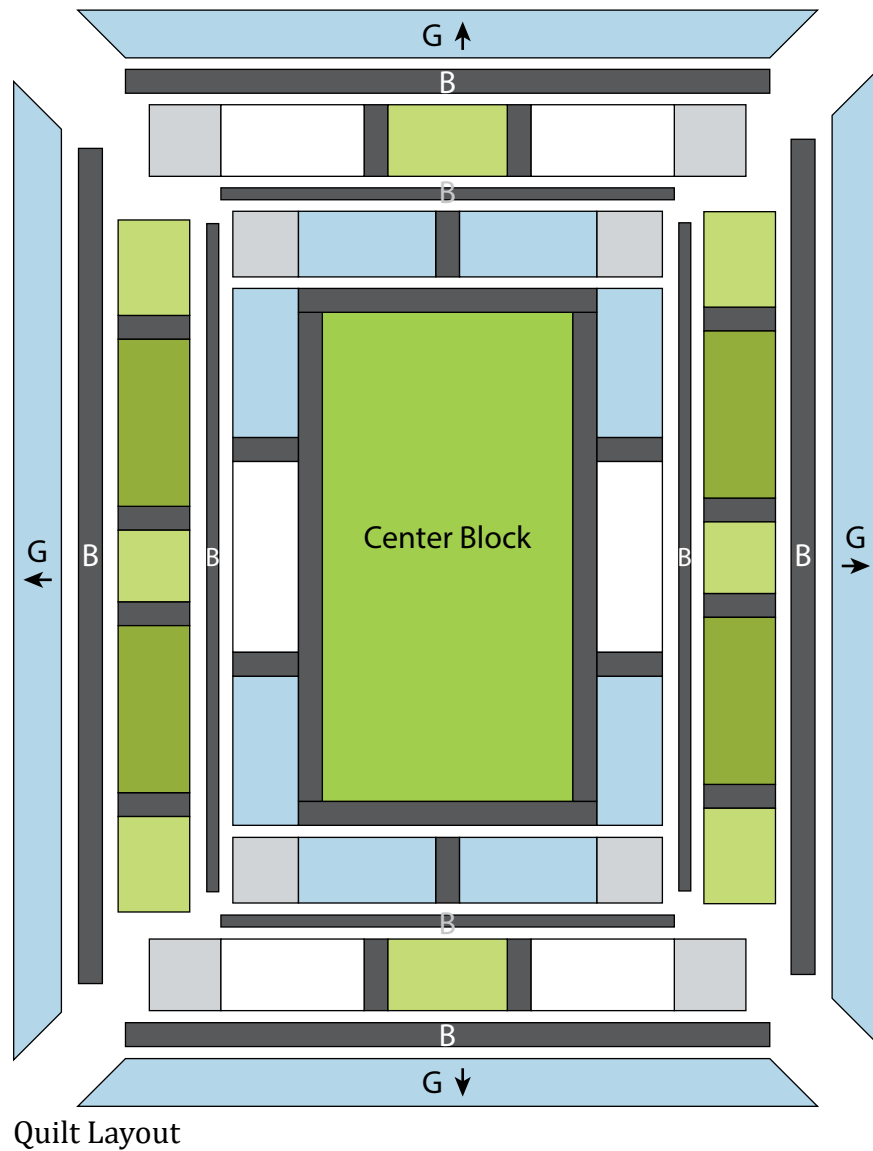
Layering, Quilting and Finishing

13. Press the quilt top and 70" x 90" backing well. Layer backing (wrong side up), batting, pressed quilt top (right side up) and baste. Quilt as desired and trim excess batting and backing when quilting is complete.

Binding

14. Cut the ends of the (8) Fabric F binding strips at a 45-degree angle and sew end to end to make (1) continuous piece of binding. Fold in half lengthwise and press wrong sides together.

15. Sew the binding to the front of the quilt, raw edges together. Turn the folded edge to the back, and hand stitch in place.



Every effort has been made to ensure that all projects are error free. All the information is presented in good faith, however no warranty can be given nor results guaranteed as we have no control over the execution of instructions. Therefore, we assume no responsibility for the use of this information or damages that may occur as a result. When errors are brought to our attention, we make every effort to correct and post a revision as soon as possible. Please make sure to check www.studioefabrics.net for pattern updates prior to starting the project. We also recommend that you test the project prior to cutting for kits. Finally, all free projects are intended to remain free to you and are **not for resale**.