

# Rainbow Dragon

.....  
A Free Project Sheet  
.....  
NOT FOR RESALE  
.....

QUILT 2



Featuring fabrics from the **Rainbow Dragon** collection by **Sue Ellen Brown** for **STUDIO e fabrics**

## Fabric Requirements

(A) 5849P-44 .....	1 panel
(B) 5845-87 .....	2 yards*
(C) 5848-76 .....	$\frac{2}{3}$ yard
(D) 5846-99 .....	$\frac{1}{3}$ yard
(E) 5847-99 .....	2 $\frac{1}{3}$ yards
(F) 5844-76 .....	1 yard
(G) 5086-97P .....	1 $\frac{3}{4}$ yards

Backing	
5842-99 .....	5 yards

\* Includes Binding  
\*\* Just Color! Collection  
+ Snippets Collection

## Additional Supplies Needed

Batting 78" x 90" (Recommended:  
Air Lite® Colour Me 100% Cotton)  
Piecing and sewing thread  
Quilting and sewing supplies

Quilt designed by Heidi Pridemore  
Finished Quilt Size 70" x 82"  
Skill Level: Advanced Beginner

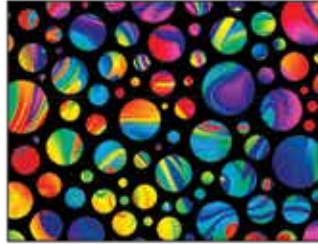
Please check our website for pattern updates before starting this project.



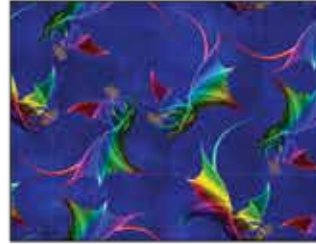
## Fabrics in the Collection



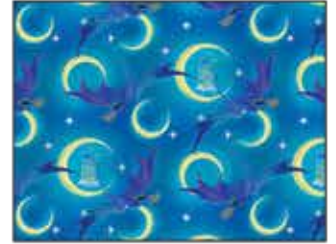
Swirl  
Ecru – 5841-44



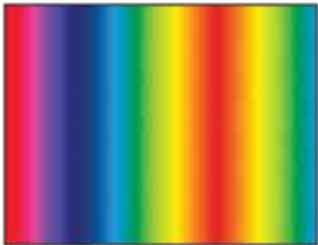
Marble Dot  
Black – 5842-99



Flying Dragon  
Navy – 5843-77



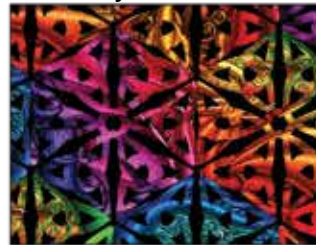
Moon Light Dragon  
Cyan – 5844-76



Spectrum Rainbow Stripe  
Multi – 5845-87



Spectrum Rainbow Medallion  
White – 5846-1



Spectrum Rainbow Medallion  
Black – 5846-99



Tossed Allover Alphabet  
Black – 5847-99



Continuous Block  
Cyan – 5848-76



Alphabet Panel  
Ecru – 5849P-44



Dragon Panel  
Cyan – 5850P-76

## Select Fabrics from Snippets



Grape Crush  
5086-55P



Lemon Lime  
5086-64P



Smoke  
5086-90P



Black Licorice  
5086-97P

Select Fabric from  
Just Color!



Pigment White  
1351-Pigment White

## Cutting

### Cutting Instructions

*Please note: All strips are cut across the width of fabric (WOF) from selvage to selvage edge unless otherwise noted.*

WOF= Width of Fabric • LOF = Length of Fabric

#### **Fabric A (5849P-44 Alphabet Panel – Ecru):**

- Fussy cut (5) 4 ¼" x 32 ½" strips, each centered on a row of letters.

#### **Fabric B (5845-87 Spectrum Rainbow Stripe – Multi), cut:**

- (3) 2" x WOF strips, sub-cut (12) 2" x 10 ½" strips.
- (4) 2" x WOF strips, sub-cut (12) 2" x 13 ½" strips.
- (2) 2" x WOF strips, sub-cut (10) 2" x 4 ¼" strips.
- (10) 2" x 35 ½" WOF strips.
- (2) 1 ½" x WOF strips, sub-cut (8) 1 ½" x 10 ½" strips.
- (3) 1 ½" x WOF strips, sub-cut (8) 1 ½" x 12 ½" strips.
- (8) 2 ½" x WOF strips for the binding.

#### **Fabric C (5848-76 Continuous Block – Cyan):**

- Fussy cut (6) 10 ½" squares, each centered on a block.

#### **Fabric D (5846-99 Spectrum Medallion – Black), cut:**

- (1) 10 ½" x WOF strip, sub-cut (4) 10 ½" squares.

#### **Fabric E (5847-99 Tossed Allover Alphabet – Black), cut:**

- (2) 4 ½" x WOF strips, sub-cut (10) 4 ½" x 6 ¼" strips.
- (10) 4 ⅝" x 42 ½" WOF strips, piece as needed.

#### **Fabric F (5844-76 Moon Light Dragon – Cyan), cut:**

- (11) 2 ½" x WOF strips. Sew the strips together end to end with diagonal seams and cut (6) 2 ½" x 70 ½" strips.

#### **Fabric G (5086-97P Snippets – Black Licorice), fussy cut:**

- (4) 14 ½" x WOF strips. Sub-cut (5) 1 ½" x 14 ½" strips from each end of each strip for a total of (20) 1 ½" x 14 ½" strips from the dark colored ends.
- From the remaining fabric, cut (5) 1 ½" x 12 ½" strips from each end of each strip for a total of (20) 1 ½" x 12 ½" strips from the medium colored ends.

#### **Backing (5842-99 Marble Dot – Black), cut:**

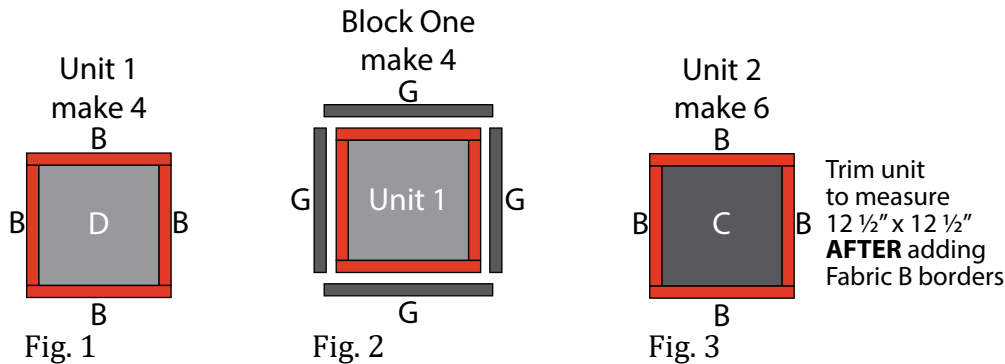
- (2) 90" x WOF strips. Sew the strips together and trim to 78" x 90" to make the back.

## Sewing

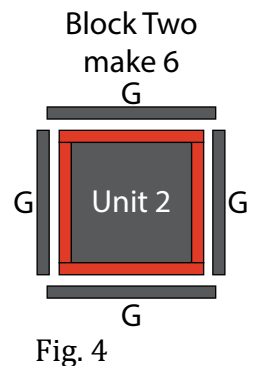
Sew using a  $\frac{1}{4}$ " seam allowance with right sides together (RST) unless otherwise indicated. Always press towards the darker fabric while assembling, unless otherwise noted by the arrows.

### Block Assembly

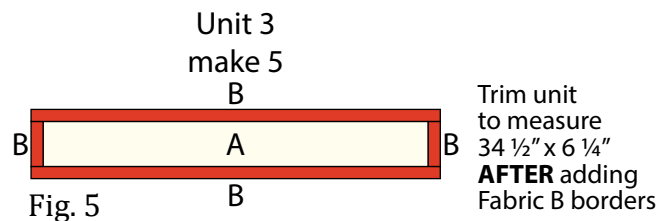
1. Sew (1)  $1\frac{1}{2}$ " x  $10\frac{1}{2}$ " Fabric B strip to each side of (1)  $10\frac{1}{2}$ " x  $10\frac{1}{2}$ " Fabric D square. Sew (1)  $1\frac{1}{2}$ " x  $12\frac{1}{2}$ " Fabric B strip to the top and to the bottom of the Fabric D square to make (1) Unit 1 square (Fig. 1). Repeat to make (4) Unit 1 squares total.
2. Sew (1)  $1\frac{1}{2}$ " x  $12\frac{1}{2}$ " Fabric G strip to each side of (1) Unit 1 square. Sew (1)  $1\frac{1}{2}$ " x  $14\frac{1}{2}$ " Fabric G strip to the top and to the bottom of the Unit 1 square to make (1) Block One square (Fig. 2). Repeat to make (4) Block One squares total.
3. Sew (1)  $2$ " x  $10\frac{1}{2}$ " Fabric B strip to each side of (1)  $10\frac{1}{2}$ " Fabric C square. Sew (1)  $2$ " x  $13\frac{1}{2}$ " Fabric B strip to the top and to the bottom of the Fabric C square to make (1) Unit 2 square (Fig. 3). **Trim the block to measure  $12\frac{1}{2}$ " x  $12\frac{1}{2}$ ".** Repeat to make (6) Unit 2 squares total.



4. Sew (1)  $1\frac{1}{2}$ " x  $12\frac{1}{2}$ " Fabric G strip to each side of (1) Unit 2 square. Sew (1)  $1\frac{1}{2}$ " x  $14\frac{1}{2}$ " Fabric G strip to the top and to the bottom of the Unit 2 square to make (1) Block Two square (Fig. 4). Repeat to make (6) Block Two squares total.



5. Sew (1)  $2$ " x  $4\frac{1}{4}$ " Fabric B strip to each end of (1)  $32\frac{1}{2}$ " x  $4\frac{1}{4}$ " Fabric A strip. Sew (1)  $2$ " x  $35\frac{1}{2}$ " Fabric B strip to the top and to the bottom of the Fabric A strip to make (1) Unit 3 strip (Fig. 5). **Trim the unit to measure  $34\frac{1}{2}$ " x  $6\frac{1}{4}$ ".** Repeat to make (5) Unit 3 strips total.



6. Sew (1) 4 ½" x 6 ¼" Fabric E strip to each end of (1) Unit 3 strip. Sew (1) 4 5/8" x 42 ½" Fabric E strip to the top and to the bottom of the Unit 3 strip to make (1) Block Three strip (Fig. 6). Repeat to make (5) Block Three strips total.

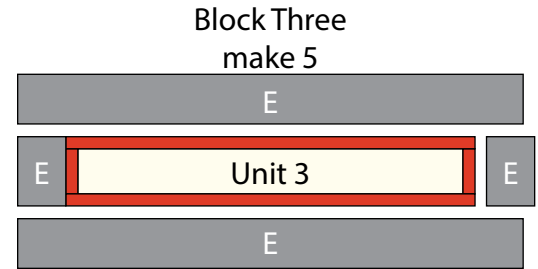


Fig. 6

## Quilt Top Assembly

*(Follow the Quilt Layout while assembling the quilt top.)*

7. Sew (1) Block One square to each end of (1) Block Three strip to make Row One. Repeat to make Row Five.

8. Sew (1) Block Two square to each end of (1) Block Three strip to make Row Two. Repeat to make Row Three and Row Four.

9. Sew together (6) 2 ½" x 70 ½" Fabric F strips and the (5) pieced rows in numerical order, lengthwise and alternating them from top to bottom, to make the quilt top.

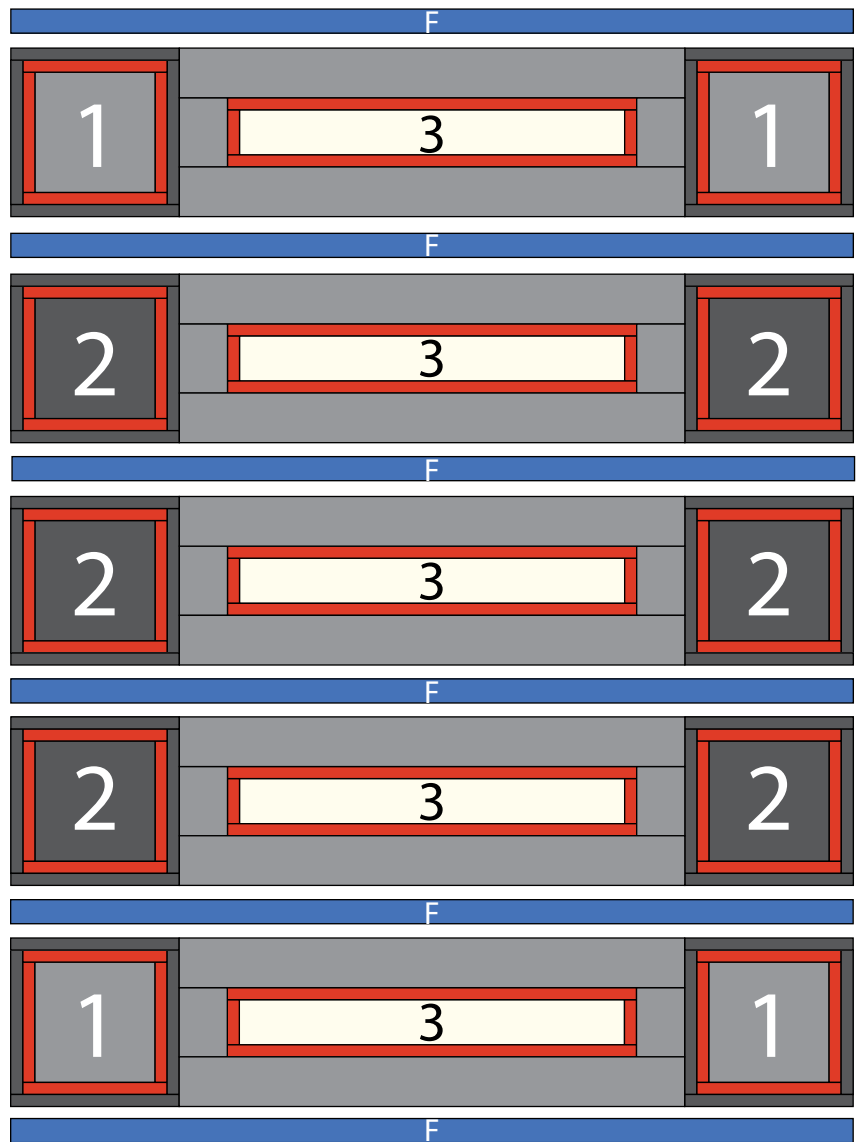
## Layering, Quilting and Finishing

10. Press the quilt top and 78" x 90" backing well. Layer backing (wrong side up), batting, pressed quilt top (right side up) and baste. Quilt as desired and trim excess batting and backing when quilting is complete.

## Binding

11. Cut the ends of the (8) Fabric B binding strips at a 45-degree angle and sew end to end to make (1) continuous piece of binding. Fold in half lengthwise and press wrong sides together.

12. Sew the binding to the front of the quilt, raw edges together. Turn the folded edge to the back, and hand stitch in place.



Quilt Layout

*Every effort has been made to ensure that all projects are error free. All the information is presented in good faith, however no warranty can be given nor results guaranteed as we have no control over the execution of instructions. Therefore, we assume no responsibility for the use of this information or damages that may occur as a result. When errors are brought to our attention, we make every effort to correct and post a revision as soon as possible. Please make sure to check [www.studioefabrics.net](http://www.studioefabrics.net) for pattern updates prior to starting the project. We also recommend that you test the project prior to cutting for kits. Finally, all free projects are intended to remain free to you and are **not for resale**.*