



AMAZEMENT Park *Quilt*
by Josh Rey



Featuring the
Amazement Park collection
by Josh Rey
and
the Good Vibes collection
by Courtney Morgenstern
Shipping to stores January 2022

Finished Size: 46 ½ in x 56 ½ in (118.11 cm x 143.51 cm)

Fabric Needed

3 Wishes Fabric® Amazement Park Collection

- 1 Panel – Ferris Wheel Panel (18739-PNL-CTN-D)
- 1 ⅛ yds – Blueprint (18736-BLK-CTN-D) for Piecing and Binding
- ¾ yd – Ride Patch (18741-BLK-CTN-D)
- ½ yd – Roller Coaster (18740-BLU-CTN-D)
- ½ yd – Carousel (18738-BLU-CTN-D)
- ¼ yd – Food Signs (18737-MLT-CTN-D)
- ¼ yd – Popcorn (18742-YLW-CTN-D)
- 2 ¾ yds – Food Signs (18737-MLT-CTN-D) for Backing

3 Wishes Fabric® Good Vibes Collection

- ⅓ yd – Circle Dots (18660-WOW-CTN-D)

Additional Supplies Needed:

- 55 in x 65 in Cotton batting
- Piecing and sewing thread
- Quilting and sewing supplies
- Even-feed foot (optional for quilting)

Before You Begin

Read all instructions before beginning project. Do not pre-wash fabrics. Press fabrics with a dry iron on cotton setting before cutting. Use a ¼ in (6.35 mm) seam allowance and sew fabrics with right sides together (RST) unless otherwise noted. Press seams in the direction of the arrows. wof = width of fabric.

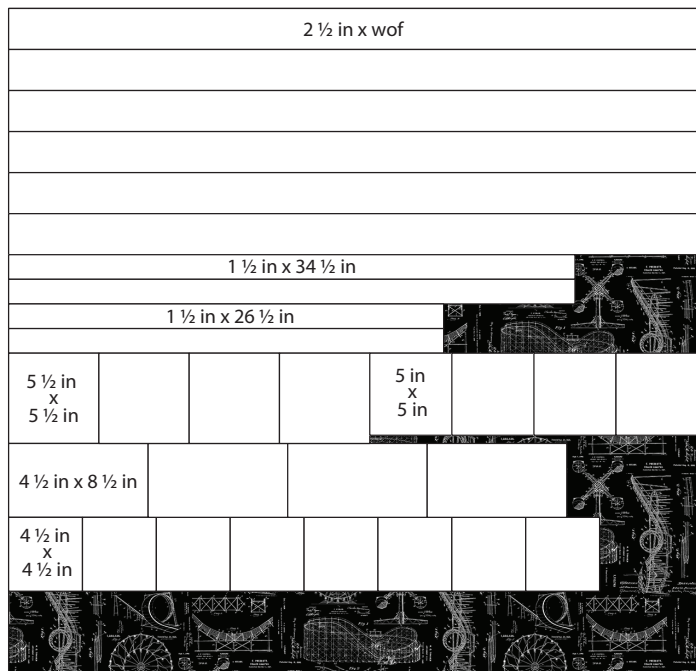
Note: A printed panel may become slightly skewed during the finishing process. Check if panel is square before cutting by folding the panel so selvages meet. If all edges do not meet, pull firmly from corner to corner until the edges meet. Continue until all corners are square.

Cutting

Use a rotary cutter and ruler to cut the size and number of squares and rectangles from each fabric listed below.



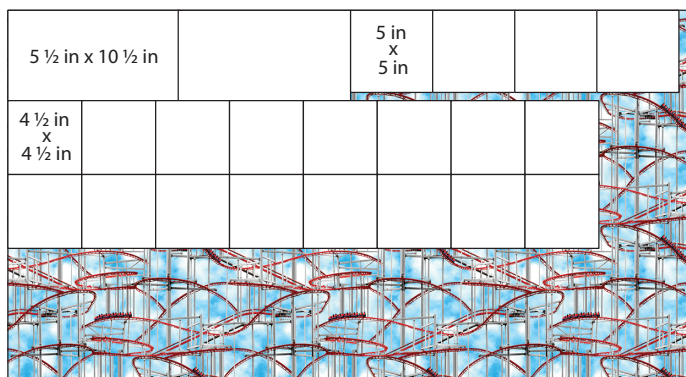
Ferris Wheel Panel – 18739-PNL-CTN-D (1 Panel)
Fussy Cut 1 – 24 ½ in x 34 ½ in (62.23 cm x 87.63 cm)



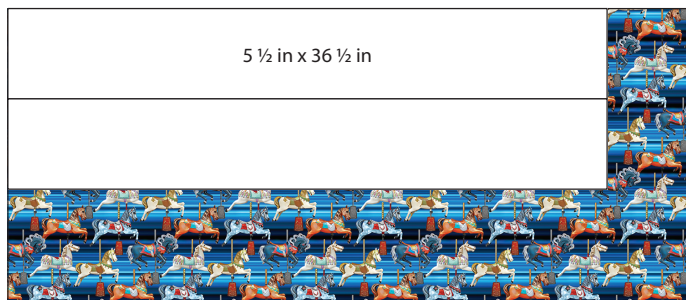
Blueprint – 18736-BLK-CTN-D (1 ⅙ yd x wof / 102.87 cm x 106.68 cm)
Cut 6 – 2 ½ in x wof (6.35 cm x 106.68 cm) **Binding**
Cut 2 – 1 ½ in x 34 ½ in (3.81 cm x 87.63 cm)
Cut 2 – 1 ½ in x 26 ½ in (3.81 cm x 67.31 cm)
Cut 4 – 5 ½ in x 5 ½ in (13.97 cm x 13.97 cm)
Cut 4 – 5 in x 5 in (12.7 cm x 12.7 cm)
Cut 4 – 4 ½ in x 8 ½ in (11.43 cm x 21.59 cm)
Cut 8 – 4 ½ in x 4 ½ in (11.43 cm x 11.43 cm)



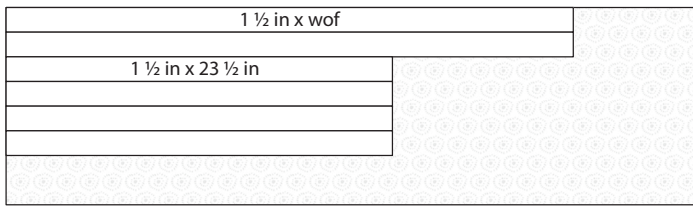
Ride Patch – 18741-BLK-CTN-D (¾ yd x wof / 68.58 cm x 106.68 cm)
Cut 4 – 5 ½ in x 23 ½ in (13.97 cm x 59.69 cm)



Roller Coaster – 18740-BLU-CTN-D (⅝ yd x wof / 57.15 cm x 106.68 cm)
Cut 2 – 5 ½ in x 10 ½ in (13.97 cm x 26.67 cm)
Cut 4 – 5 in x 5 in (12.7 cm x 12.7 cm)
Cut 16 – 4 ½ in x 4 ½ in (11.43 cm x 11.43 cm)



Carousel – 18738-BLU-CTN-D (½ yd x wof / 57.15 cm x 106.68 cm)
Cut 2 – 5 ½ in x 36 ½ in (13.97 cm x 92.71 cm)



Circle Dots – 18660-WOW-CTN-D (1/3 yd x wof / 30.18 cm x 106.68 cm)

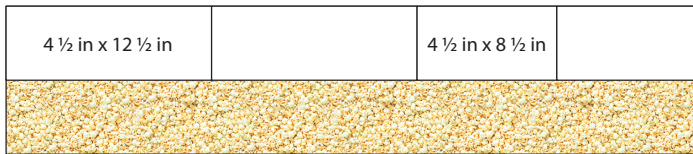
Cut 2 – 1 1/2 in x wof (3.81 cm x 106.68 cm)

Cut 4 – 1 1/2 in x 23 1/2 in (3.81 cm x 59.69 cm)



Food Signs – 18737-MLT-CTN-D (1/4 yd x wof / 22.86 cm x 106.68 cm)

Cut 4 – 4 1/2 in x 9 1/2 in (11.43 cm x 24.13 cm)



Popcorn – 18742-YLW-CTN-D (1/4 yd x wof / 22.86 cm x 106.68 cm)

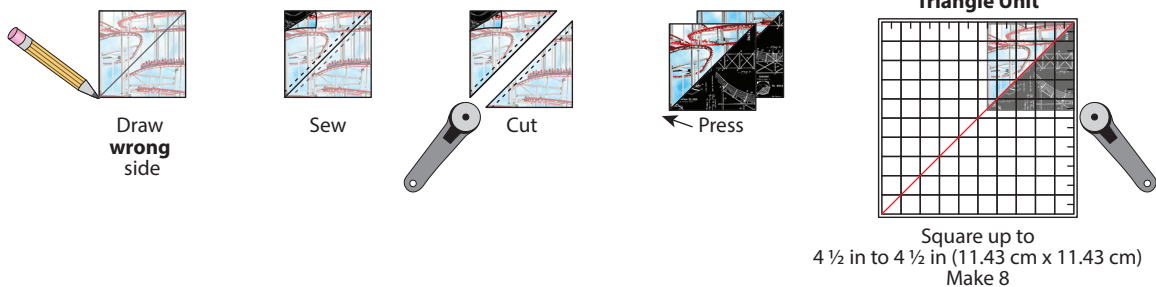
Cut 2 – 4 1/2 in x 12 1/2 in (11.43 cm x 31.75 cm)

Cut 2 – 4 1/2 in x 8 1/2 in (11.43 cm x 21.59 cm)

Sewing

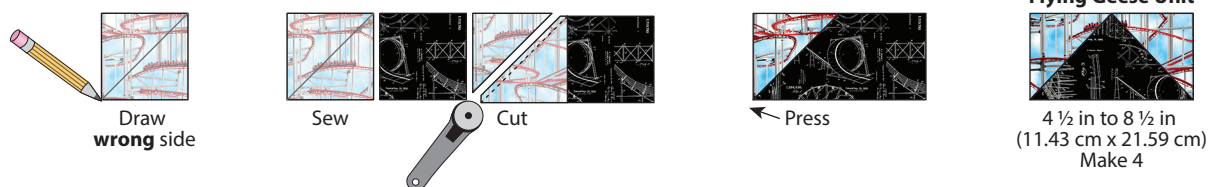
1. Draw a diagonal line on the **wrong** side of a Roller Coaster square (5 in x 5 in / 12.7 cm x 12.7 cm) as shown in Diagram A. Place on top of a Blueprint square (5 in x 5 in / 12.7 cm x 12.7 cm) RST and sew 1/4 in (6.35 mm) away from the line on both sides. Cut on the drawn line; press; trim if necessary. **Note:** *Two squares yield two Half-Square Triangle Units.* Repeat to make a total of eight Half-Square Triangle Units (4 1/2 in x 4 1/2 in / 11.43 cm x 11.43 cm).

Dia. A



2. Refer to Diagram B to make Flying Geese Units. Draw a diagonal line on the **wrong** side of a Roller Coaster square (4 1/2 in x 4 1/2 in / 11.43 cm x 11.43 cm). Place RST on the left side of a Blueprint rectangle (4 1/2 in x 8 1/2 in / 11.43 cm x 21.59 cm). Sew on the diagonal line. Trim seam to 1/4 in (6.35 mm); press open. Repeat with a second Roller Coaster square (4 1/2 in x 4 1/2 in / 11.43 cm x 11.43 cm) on the right side of the rectangle to make a Roller Coaster/Blueprint Flying Geese Unit (4 1/2 in x 8 1/2 in / 11.43 cm x 21.59 cm). Make four.

Dia. B



3. Follow Step 2 and refer to Diagram C using four Blueprint squares (4 ½ in x 4 ½ in / 11.43 cm x 11.43 cm) and two Popcorn rectangles (4 ½ in x 8 ½ in / 11.43 cm x 21.59 cm) to make two Blueprint/Popcorn Flying Geese Units (4 ½ in x 8 ½ in / 11.43 cm x 21.59 cm).

Dia. C

Blueprint/Popcorn Flying Geese Unit

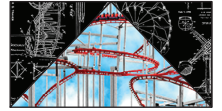


4 ½ in to 8 ½ in
(11.43 cm x 21.59 cm)
Make 2

4. Follow Step 2 and refer to Diagram D using Blueprint squares (5 ½ in x 5 ½ in / 13.97 cm x 13.97 cm) and two Roller Coaster rectangles (5 ½ in x 10 ½ in / 13.97 cm x 26.67 cm) to make two Blueprint/Roller Coaster Flying Geese Units (5 ½ in x 10 ½ in / 13.97 cm x 26.67 cm).

Dia. D

Blueprint/Roller Coaster Flying Geese Unit



5 ½ in to 10 ½ in
(13.97 cm x 26.67 cm)
Make 2

5. Follow the method for corner triangles in Step 2 and refer to Diagram E using four Roller Coaster squares (4 ½ in x 4 ½ in / 11.43 cm x 11.43 cm) and two Popcorn rectangles (4 ½ in x 12 ½ in / 11.43 cm x 31.75 cm) to make two Roller Coaster/Popcorn Side Border Units (4 ½ in x 12 ½ in / 11.43 cm x 31.75 cm).

Dia. E

Blueprint/Popcorn Flying Geese Unit



4 ½ in to 12 ½ in
(11.43 cm x 31.75 cm)
Make 2

6. Follow the method for corner triangles in Step 2 and refer to Diagram F using four Roller Coaster squares (4 ½ in x 4 ½ in / 11.43 cm x 11.43 cm), four Blueprint squares (4 ½ in x 4 ½ in / 11.43 cm x 11.43 cm) and four Food Signs rectangles (4 ½ in x 9 ½ in / 11.43 cm x 24.13 cm) to make the four Roller Coaster/Blueprint/Food Signs Units 1-4 (4 ½ in x 9 ½ in / 11.43 cm x 24.13 cm). **Note:** Check orientation of Food Sign design.

Dia. F

Roller Coaster/Blueprint/Food Signs Unit 1



4 ½ in to 9 ½ in
(24.13 cm x 31.75 cm)
Make 1

Roller Coaster/Blueprint/Food Signs Unit 2



4 ½ in to 9 ½ in
(24.13 cm x 31.75 cm)
Make 1

Roller Coaster/Blueprint/Food Signs Unit 3



4 ½ in to 9 ½ in
(24.13 cm x 31.75 cm)
Make 1

Roller Coaster/Blueprint/Food Signs Unit 4



4 ½ in to 9 ½ in
(24.13 cm x 31.75 cm)
Make 1

7. Place two HST Units (4 ½ in x 4 ½ in / 11.43 cm x 11.43 cm), two Roller Coaster/Blueprint FG Units (4 ½ in x 8 ½ in / 11.43 cm x 21.59 cm) and one Roller Coaster/Popcorn Side Border Unit (4 ½ in x 12 ½ in / 11.43 cm x 31.75 cm) as shown in Diagram G. Pin RST, sew and press to make the Inner Side Border (4 ½ in x 36 ½ in / 11.43 cm x 92.71 cm). Repeat to make two.

Dia. G



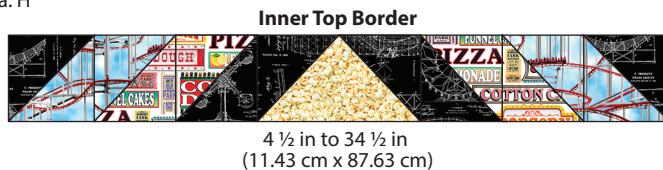
Inner Side Border



4 ½ in to 36 ½ in
(11.43 cm x 92.71 cm)
Make 2

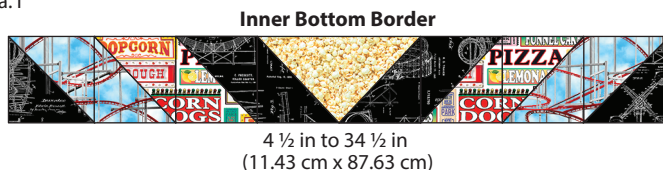
8. Follow Step 7 and refer to Diagram H using two HST Units (4 ½ in x 4 ½ in / 11.43 cm x 11.43 cm), Roller Coaster/Blueprint/Food Signs Units 1 and 2 (4 ½ in x 9 ½ in / 11.43 cm x 24.13 cm) and one Blueprint/Popcorn FG Unit (4 ½ in x 8 ½ in / 11.43 cm x 21.59 cm) to make the Inner Top Border (4 ½ in x 34 ½ in / 11.43 cm x 87.63 cm). **Note:** Check orientation of Food Sign design.

Dia. H



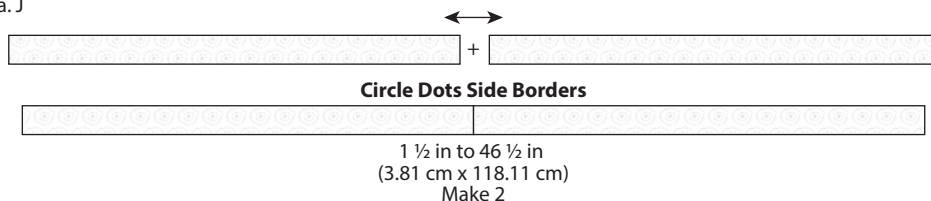
9. Follow Step 7 and refer to Diagram I using two HST Units (4 ½ in x 4 ½ in / 11.43 cm x 11.43 cm), Roller Coaster/Blueprint/Food Signs Units 3 and 4 (4 ½ in x 9 ½ in / 11.43 cm x 24.13 cm) and one Blueprint/Popcorn FG Unit (4 ½ in x 8 ½ in / 11.43 cm x 21.59 cm) to make the Inner Bottom Border (4 ½ in x 34 ½ in / 11.43 cm x 87.63 cm). **Note:** Check orientation of Food Sign design.

Dia. I



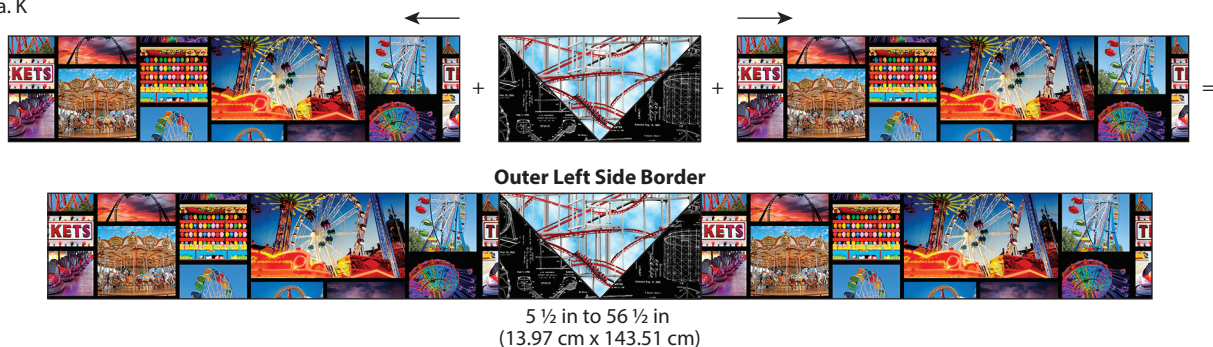
10. Place two Circle Dots strips (1 ½ in x 23 ½ in / 3.81 cm x 59.69 cm) as shown in Diagram J. Pin RST, sew and press open or to one side to make the Circle Dots Side Border (1 ½ in x 46 ½ in / 3.81 cm x 118.11 cm). Repeat to make two.

Dia. J



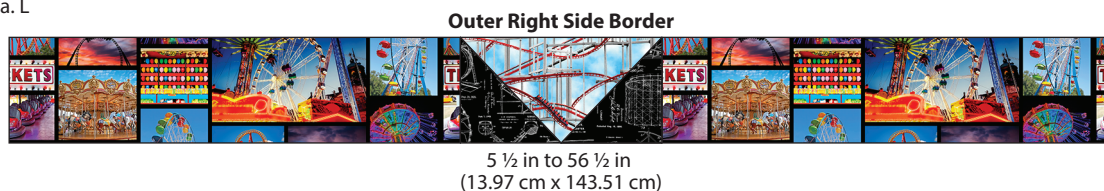
11. Place one Ride Patch rectangle (5 ½ in x 23 ½ in / 13.97 cm x 59.69 cm) on each side of one Blueprint/Roller Coaster FG Unit (5 ½ in x 10 ½ in / 13.97 cm x 26.67 cm) as shown in Diagram K. Pin RST, sew and press to make the Outer Left Side Border (5 ½ in x 56 ½ in / 13.97 cm x 59.69 cm). **Note:** Check orientation of Ride Patch design.

Dia. K



12. Follow Step 11 and Diagram L to make the Outer Right Side Border (5 ½ in x 56 ½ in / 13.97 cm x 59.69 cm). **Note:** Check orientation of Ride Patch design.

Dia. L



13. Refer to Diagram M to place the Borders as shown around the Fussy Cut Ferris Wheel Panel rectangle (24 ½ in x 34 ½ in / 62.23 cm x 87.63 cm). Sew each Border RST in the order listed. Pin matching center, seams and ends. Press seams as shown. Measure at each step to ensure the next border will fit. **Note:** Check orientation of fabric design. **Tip:** If one border is a little larger than the border it is being sewn to, pin well to ease the fullness and place the fullness on the bottom while sewing. Finished Quilt Top should measure 46 ½ in x 56 ½ in (118.11 cm x 143.51 cm).

Blueprint Border

Sides: 2 – Blueprint strips (1 ½ in x 34 ½ in / 3.81 cm x 87.63 cm)
 Top and Bottom: 2 – Blueprint strips (1 ½ in x 26 ½ in / 3.81 cm x 67.31 cm)
 Quilt Top - 26 ½ in x 36 ½ in (67.31 cm x 92.71 cm).

Inner Border

Sides: 2 – Inner Side Borders; made in Step 7 (4 ½ in x 36 ½ in / 11.43 cm x 92.71 cm)
 Top and Bottom: 2 – Top and Bottom Borders; made in Steps 8 and 9 (4 ½ in x 34 ½ in / 11.43 cm x 87.63 cm)
 Quilt Top - 34 ½ in x 44 ½ in (87.63 cm x 113.03 cm).

Circle Dots Border

Top and Bottom: 2 – Circle Dots strips (1 ½ in x 34 ½ in / 3.81 cm x 87.63 cm)
 Sides: 2 – Circle Dots Side Borders made in Step 10 (1 ½ in x 46 ½ in / 3.81 cm x 118.11 cm)
 Quilt Top – 36 ½ in x 46 ½ in (92.71 cm x 118.11 cm).

Outer Border

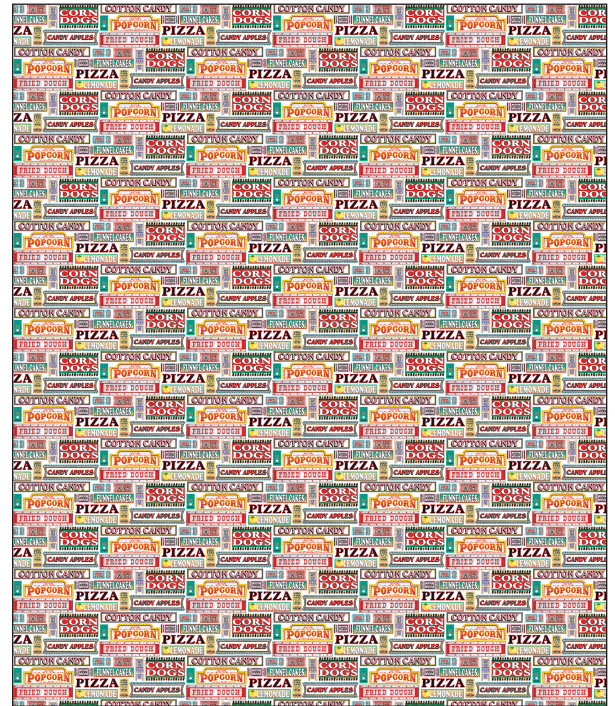
Top and Bottom: 2 – Carousel rectangles (5 ½ in x 36 ½ in)
 Sides: 2 – Side Borders; made in Steps 11 and 12 (5 ½ in x 56 ½ in / 13.97 cm x 143.51 cm)
 Quilt Top – 46 ½ in x 56 ½ in (118.11 cm x 143.51 cm).



Finishing

- Remove the selvages from the Food Signs Backing fabric.
Note: Check orientation of design. Cut one piece 40 ¼ in x 65 in (102.235 cm x 165.1 cm) and two pieces 15 ¼ in x 32 ¾ in (38.735 cm x 83.185 cm). Pin RST, sew the two smaller pieces on the short edges; press. Pin the two sections RST along the long edges and sew as shown in Diagram N. Press the seam open or to one side. The Backing should measure 55 in x 65 in (139.7 cm x 165.1 cm).
- Press finished Quilt Top and Backing. Tape the Backing, **wrong** side up, to a firm surface. Layer Batting and Quilt Top (right side up). Baste the layers together with safety pins. Quilt as desired.
- Once quilting is complete, square up corners and edges, trimming excess Backing and Batting even with the Quilt Top.

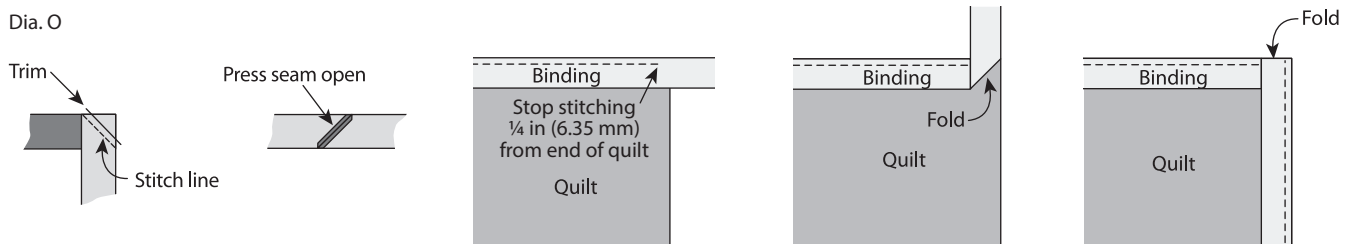
Dia. N



Backing
55 in to 65 in (139.71 cm x 165.1 cm)

- Binding** – Follow Diagram O to make the Blueprint Binding. Remove selvages and sew the short ends of the six 2 ½ in x wof strips (6.35 cm x wof) RST end to end at a 45° angle to make one continuous strip; press seams open. Press one short end ¼ in (6.35 mm) to the **wrong** side. Fold in half lengthwise with **wrong** sides together; press. Leaving a 2 in (5.08 cm) tail on the folded end, place cut edges of folded Binding even with the edge of the Quilt Top and sew, mitering the corners. Overlap ends, trim any excess and finish.

Dia. O



Finished Care Instructions

Machine wash in cold water; gentle cycle. Do not bleach. **Tip:** Before drying, check for fabric dyes that may have run. If fabric dyes run, rewash and rinse using a color catcher to absorb loose dye. Lay flat to dry or tumble dry low.