



GOOD VIBES Quilt



Featuring the
Good Vibes Collection
by Courtney Morgenstern
Shipping to stores January 2022

Finished Size: 48 ½ in x 54 ½ in (123.19 cm x 138.43 cm)

Fabric Needed

3 Wishes Fabric® Good Vibes Collection

- 2 ¾ yds – Circle Dots (18660-WOW-CTN-D)
- ⅞ yd – Butterflies (18662-BLU-CTN-D) for Piecing and Binding
- 18 in x 21 in – Floral (18657-WHT-CTN-D)
- 18 in x 21 in – Color Strokes (18658-PNK-CTN-D)
- 18 in x 21 in – Triangles (18659-TRQ-CTN-D)
- 18 in x 21 in – Fractures (18661-MLT-CTN-D)
- 18 in x 21 in – Words (18663-TRQ-CTN-D)
- 18 in x 21 in – Wide Stripe (18664-MLT-CTN-D)
- 18 in x 21 in – Diagonal Stripe (18665-TRQ-CTN-D)
- 18 in x 21 in – Rainbows (18666-WHT-CTN-D)
- 2 ¾ yds – Rainbows (18666-WHT-CTN-D) for Backing

Additional Supplies Needed:

- 57 in x 63 in Cotton batting
- 17 in x 108 in (3 yds) Lightweight fusible web
- Tape
- Piecing and sewing thread
- Quilting and sewing supplies
- Even-feed foot (optional for quilting)

Before You Begin

Read all instructions before beginning project. Do not pre-wash fabrics. Press fabrics with a dry iron on cotton setting before cutting. Use a ¼ in (6.35 mm) seam allowance and sew fabrics with right sides together (RST) unless otherwise noted. Press seams in the direction of the arrows. wof = width of fabric. Print Appliqué Template pages at 100% scale.

Cutting

Use a rotary cutter and ruler to cut the size and number of squares and rectangles from each fabric listed below. Set aside the remaining fabric for making the appliques.

16 ½ in x 18 ½ in		

Circle Dots – 18660-WOW-CTN-D (2 ¾ yds x wof / 217.17 cm x 106.68 cm)
Cut 9 – 16 ½ in x 18 ½ in (41.91 cm x 46.99 cm)

2 ½ in x wof



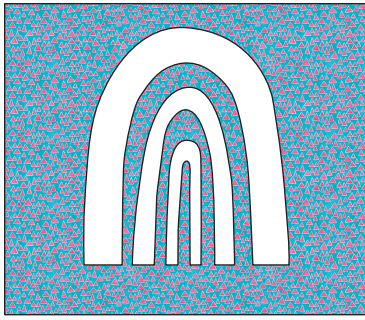
Butterflies – 18662-BLU-CTN-D (¾ yd x wof / 80.01 cm x 106.68 cm)
Cut 6 – 2 ½ in x wof (6.35 cm x 106.68 cm) for Binding
Cut 1 – Lg. Arch from Template
Cut 1 – Med. Arch from Template
Cut 1 – Sm. Arch from Template



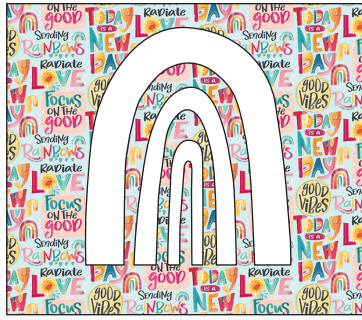
Floral – 18657-WHT-CTN-D (18 in x 21 in / 45.72 cm x 53.34 cm)
Cut 1 – Lg. Arch from Template
Cut 1 – Med. Arch from Template
Cut 1 – Sm. Arch from Template



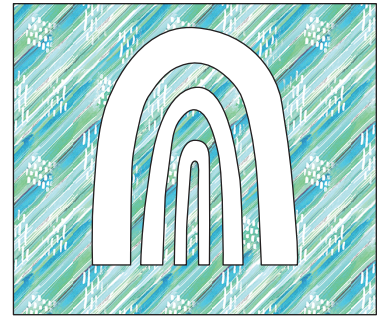
Color Strokes – 18658-PNK-CTN-D (18 in x 21 in / 45.72 cm x 53.34 cm)
Cut 1 – Lg. Arch from Template
Cut 1 – Med. Arch from Template
Cut 1 – Sm. Arch from Template



Triangles – 18659-TRQ-CTN-D
 (18 in x 21 in / 45.72 cm x 53.34 cm)
 Cut 1 – Lg. Arch from Template
 Cut 1 – Med. Arch from Template
 Cut 1 – Sm. Arch from Template



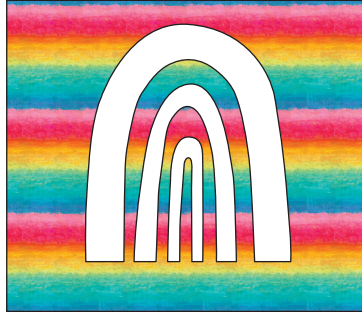
Words – 18663-TRQ-CTN-D
 (18 in x 21 in / 45.72 cm x 53.34 cm)
 Cut 1 – Lg. Arch from Template
 Cut 1 – Med. Arch from Template
 Cut 1 – Sm. Arch from Template



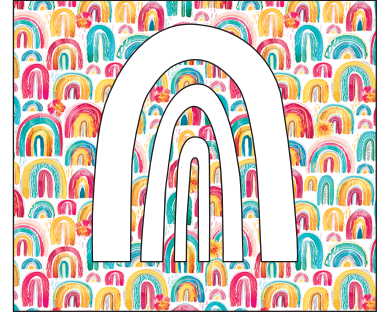
Diagonal Stripe – 18665-TRQ-CTN-D
 (18 in x 21 in / 45.72 cm x 53.34 cm)
 Cut 1 – Lg. Arch from Template
 Cut 1 – Med. Arch from Template
 Cut 1 – Sm. Arch from Template



Fractures – 18661-MLT-CTN-D
 (18 in x 21 in / 45.72 cm x 53.34 cm)
 Cut 1 – Lg. Arch from Template
 Cut 1 – Med. Arch from Template
 Cut 1 – Sm. Arch from Template



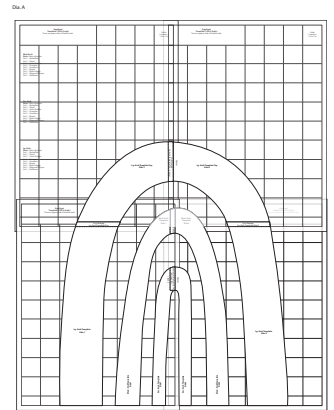
Wide Stripe – 18664-MLT-CTN-D
 (18 in x 21 in / 45.72 cm x 53.34 cm)
 Cut 1 – Lg. Arch from Template
 Cut 1 – Med. Arch from Template
 Cut 1 – Sm. Arch from Template



Rainbows – 18666-WHT-CTN-D
 (18 in x 21 in / 45.72 cm x 53.34 cm)
 Cut 1 – Lg. Arch from Template
 Cut 1 – Med. Arch from Template
 Cut 1 – Sm. Arch from Template

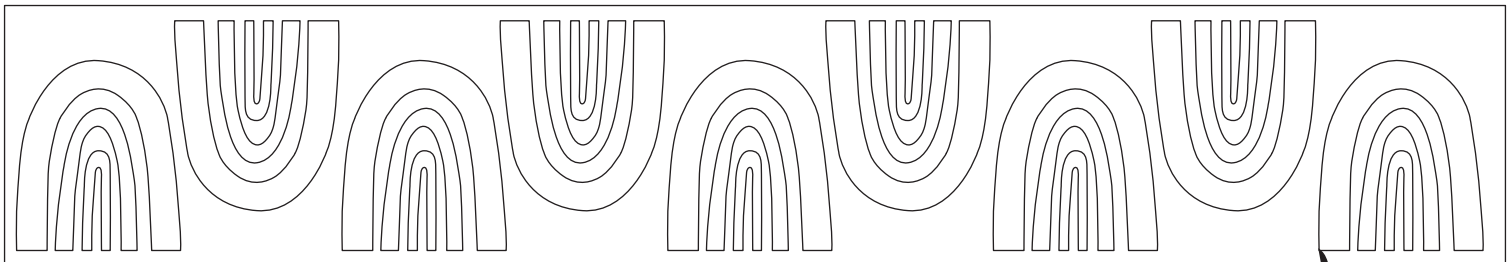
Sewing

1. Tape the four Template pages together as shown in Diagram A. Use a marking pen to connect any Arch lines that may have been covered up while taping the pattern together. **Note:** Do not cut out the shapes. It will be easier to trace on the fusible web as one sheet.



2. Use the Template from Step 1 to trace nine groups of Rainbow Arches on the paper side of fusible web as shown in Diagram B. Leave ¼ in (6.35 mm) between groups and cut out each individual Arch ⅛ in (3.18 mm) outside the traced line for a total of nine Large, nine Medium and nine Small Arches.

Dia. B



Lightweight fusible web (17 in x 108 in / 43.18 cm x 274.32 cm)
 Cut 9 – Lg. Arch from Template
 Cut 9 – Med. Arch from Template
 Cut 9 – Sm. Arch from Template



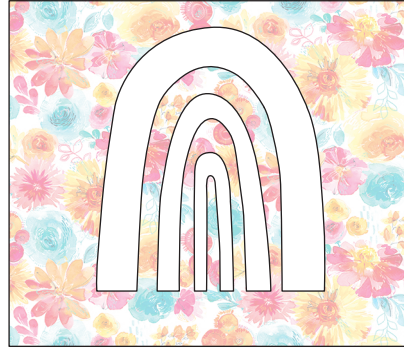
3. Refer to Diagram C to place the adhesive side of the fusible web appliqué shapes on the **wrong** side of each fabric. Fuse according to the manufacturer's directions. Cut out on the traced lines. To mark the center, fold and finger press along the center line before removing the paper backing.

Dia. C



Butterflies

Cut 1 – Lg. Arch from Template
Cut 1 – Med. Arch from Template
Cut 1 – Sm. Arch from Template



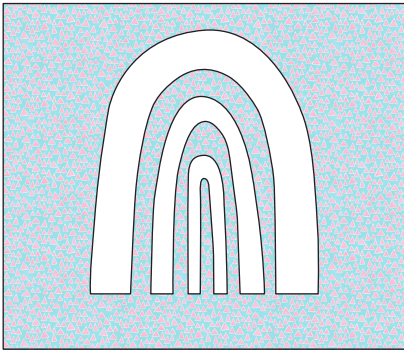
Floral

Cut 1 – Lg. Arch from Template
Cut 1 – Med. Arch from Template
Cut 1 – Sm. Arch from Template



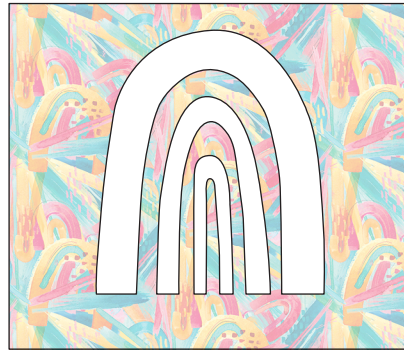
Color Strokes

Cut 1 – Lg. Arch from Template
Cut 1 – Med. Arch from Template
Cut 1 – Sm. Arch from Template



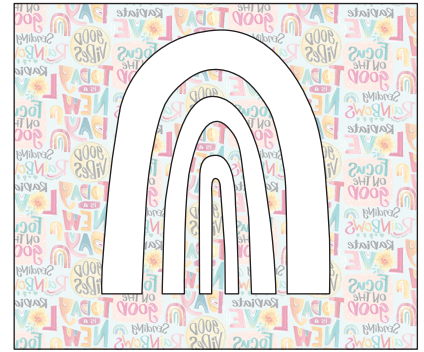
Triangles

Cut 1 – Lg. Arch from Template
Cut 1 – Med. Arch from Template
Cut 1 – Sm. Arch from Template



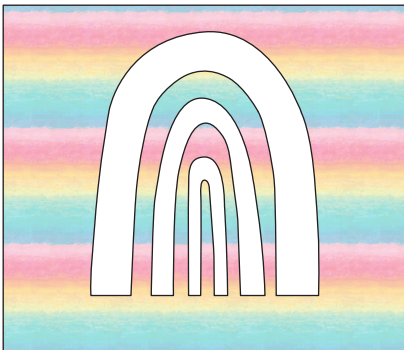
Fractures

Cut 1 – Lg. Arch from Template
Cut 1 – Med. Arch from Template
Cut 1 – Sm. Arch from Template



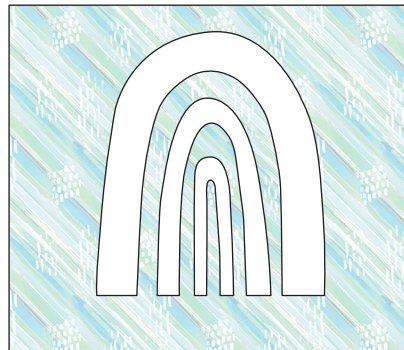
Words

Cut 1 – Lg. Arch from Template
Cut 1 – Med. Arch from Template
Cut 1 – Sm. Arch from Template



Wide Stripe

Cut 1 – Lg. Arch from Template
Cut 1 – Med. Arch from Template
Cut 1 – Sm. Arch from Template



Diagonal Stripe

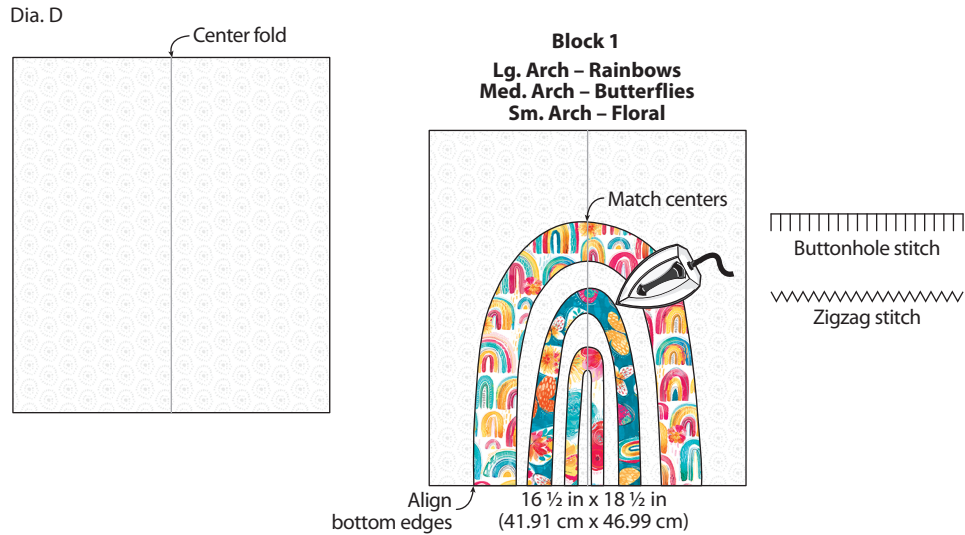
Cut 1 – Lg. Arch from Template
Cut 1 – Med. Arch from Template
Cut 1 – Sm. Arch from Template



Rainbows

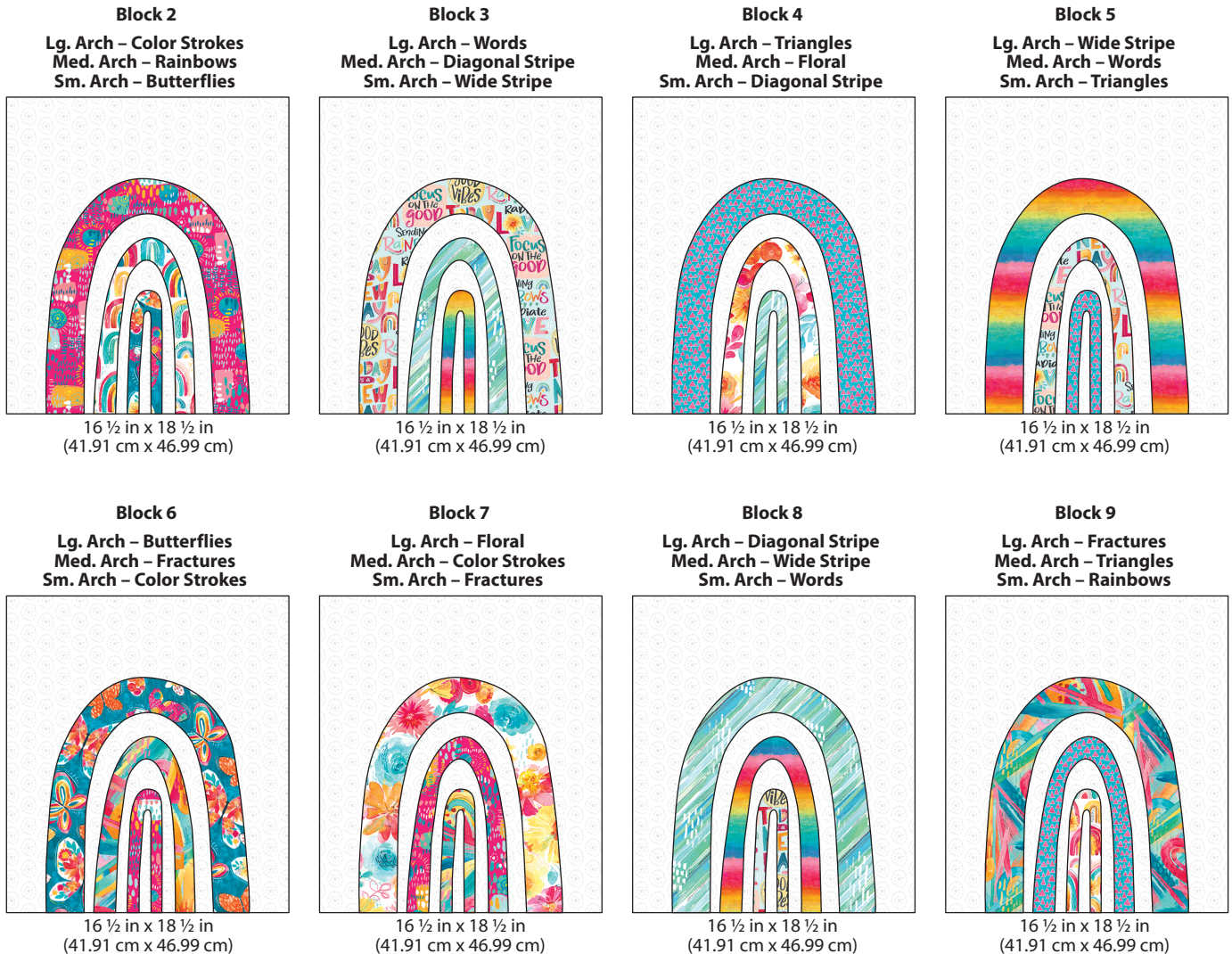
Cut 1 – Lg. Arch from Template
Cut 1 – Med. Arch from Template
Cut 1 – Sm. Arch from Template

4. Refer to Diagram D to prepare the Block background by folding a Circle Dots rectangle 16 1/2 in x 18 1/2 in (41.91 cm x 46.99 cm) in half as shown; press gently to crease the center. Position the Rainbows Lg. Arch on the right side of the background matching centers and aligning the bottom edges. Repeat with the Butterflies Med. Arch and Floral Sm. Arch. Fuse to the right side of the fabric according to the manufacturer's directions. Use a coordinating thread and small buttonhole or zig-zag stitch to secure and finish the edges. Block 1 should measure 16 1/2 in x 18 1/2 in (41.91 cm x 46.99 cm). Label each Block as they are made.



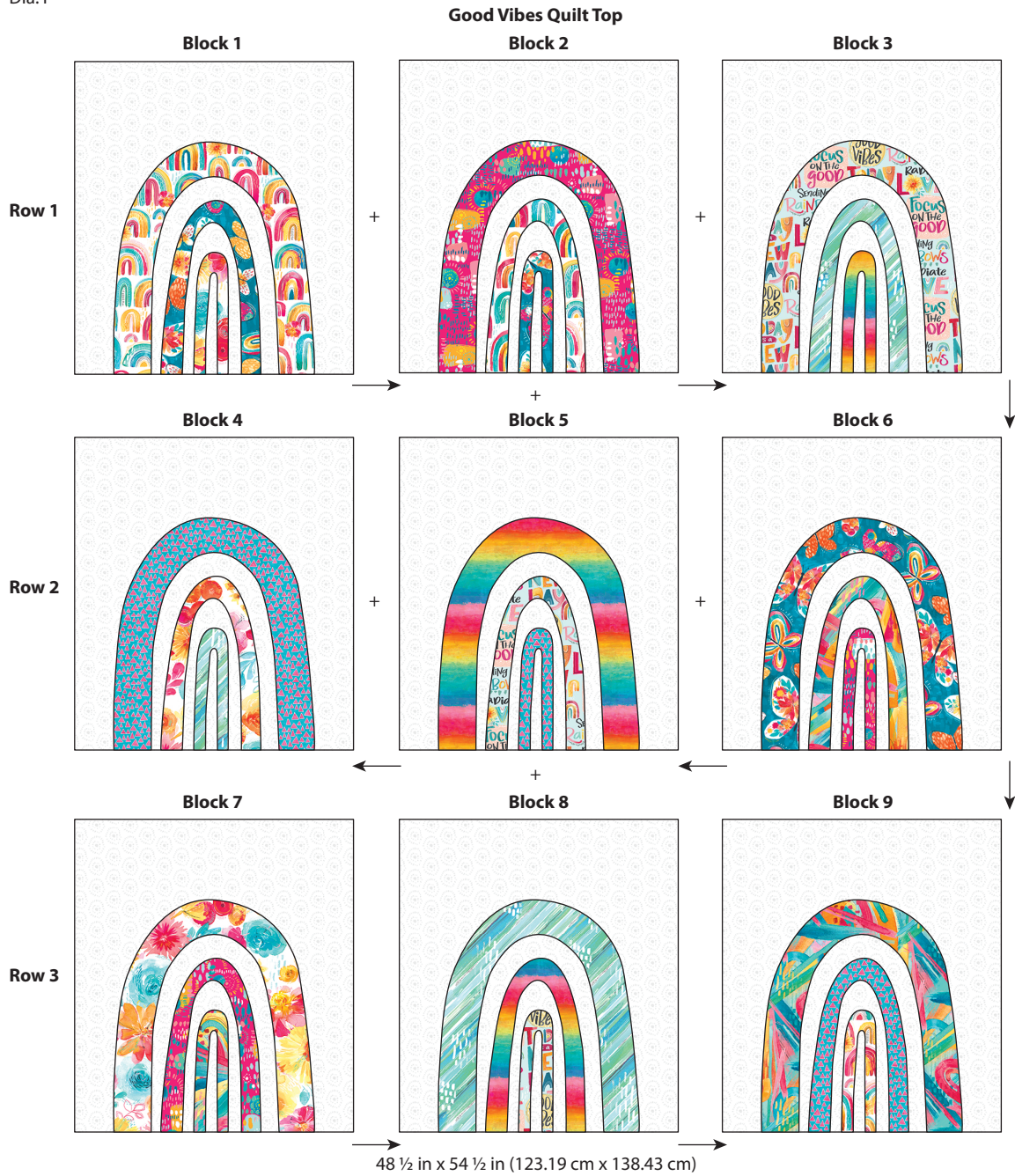
5. Follow Step 4 and Diagram E to make Blocks 2-9, each measuring 16 1/2 in x 18 1/2 in (41.91 cm x 46.99 cm); label.

Dia. E



6. Refer to Diagram F to place the Blocks in three rows. Pin Blocks 1 and 2 RST, sew and press. Add Block 3 to complete Row 1. Repeat for remaining rows. Pin the Rows RST matching seams; sew and press. The finished Quilt Top should measure 48 1/2 in x 54 1/2 in (123.19 cm x 138.43 cm).

Dia. F



Finishing

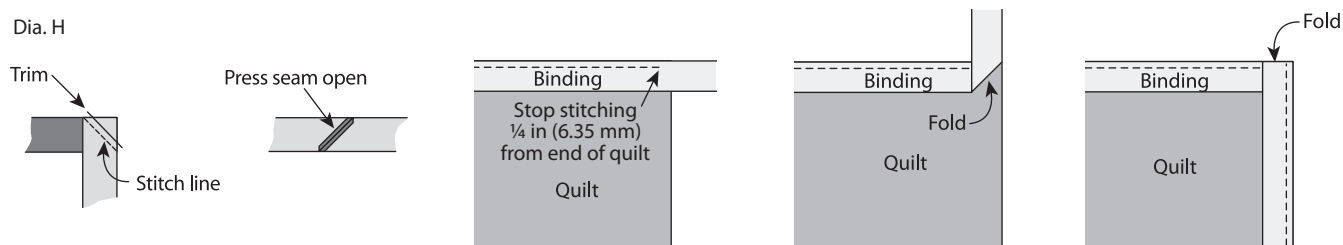
- Remove the selvages from the Rainbows Backing fabric. Cut one piece 40 ¼ in x 63 in (102.24 cm x 160.02 cm) and two pieces 17 ¼ in x 31 ¾ in (43.82 cm x 80.65 cm). **Note:** Check the orientation of the designs. Pin RST and sew the two smaller pieces on the short edges; press. Pin the two sections RST and sew along the long edges as shown in Diagram G. Press the seam open or to one side. The Backing should measure 57 in x 63 in (144.78 cm x 160.02 cm).
- Press finished Quilt Top and Backing. Tape the Backing **wrong** side up to a firm surface. Layer Batting and Quilt Top (right side up). Baste the layers together with safety pins. Quilt as desired.
- Once quilting is complete, square up corners and edges, trimming excess Backing and Batting even with the Quilt Top.

Dia. G



- Binding** – Follow Diagram H to make the Butterflies Binding. Remove selvages and sew the short ends of the six 2 ½ in (6.35 cm) x wof strips RST end to end at a 45° angle to make one continuous strip; press seams open. Press one short end ¼ in (6.35 mm) to the **wrong** side. Fold in half lengthwise with **wrong** sides together; press. Leaving a 2 in (5.08 cm) tail on the folded end, place cut edges of folded Binding even with the edge of the Quilt Top and sew, mitering the corners. Overlap ends, trim any excess and finish sewing the Binding. Fold Binding over to back and hand stitch.

Dia. H



Finished Care Instructions

Machine wash in cold water; gentle cycle. Do not bleach. **Tip:** Before drying, check for fabric dyes that may have run. If fabric dyes run, rewash and rinse using a color catcher to absorb loose dye. Lay flat to dry or tumble dry low.

**Appliqué
Template (100% Scale)**
Trace on paper side of fusible web.

Scale:
1 square =
1 in x 1 in

$\frac{1}{4}$ in Overlap
Lg. Arch Template Top

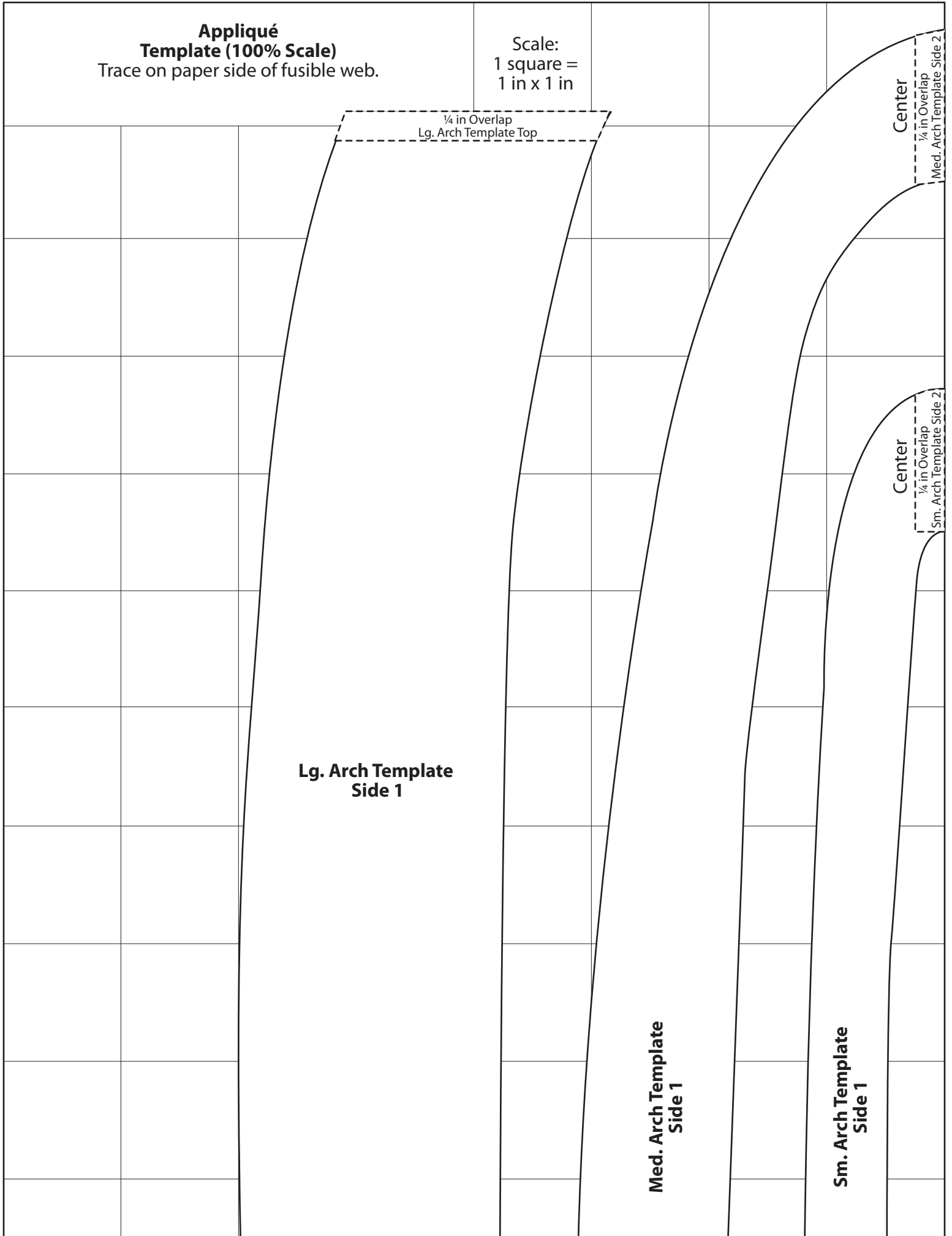
Center
 $\frac{1}{4}$ in Overlap
Med. Arch Template Side 2

Center
 $\frac{1}{4}$ in Overlap
Sm. Arch Template Side 2

**Lg. Arch Template
Side 1**

**Med. Arch Template
Side 1**

**Sm. Arch Template
Side 1**



**Appliqué
Template (100% Scale)**

Trace on paper side of fusible web.

Scale:
1 square =
1 in x 1 in

¼ in Overlap
Lg. Arch Template Top

Center

¼ in Overlap
Med. Arch Template Side 1

Center

¼ in Overlap
Sm. Arch Template Side 2

**Sm. Arch Template
Side 2**

**Med. Arch Template
Side 2**

**Lg. Arch Template
Side 2**

**Appliqué
Template (100% Scale)**
Trace on paper side of fusible web.

Scale:
1 square =
1 in x 1 in

Med. Arch

Note: *Fabric direction*

- Cut 1 – Butterflies
- Cut 1 – Floral
- Cut 1 – Color Strokes
- Cut 1 – Triangles
- Cut 1 – Fractures
- Cut 1 – Words
- Cut 1 – Wide Stripes
- Cut 1 – Diagonal Stripes
- Cut 1 – Rainbows

Sm. Arch

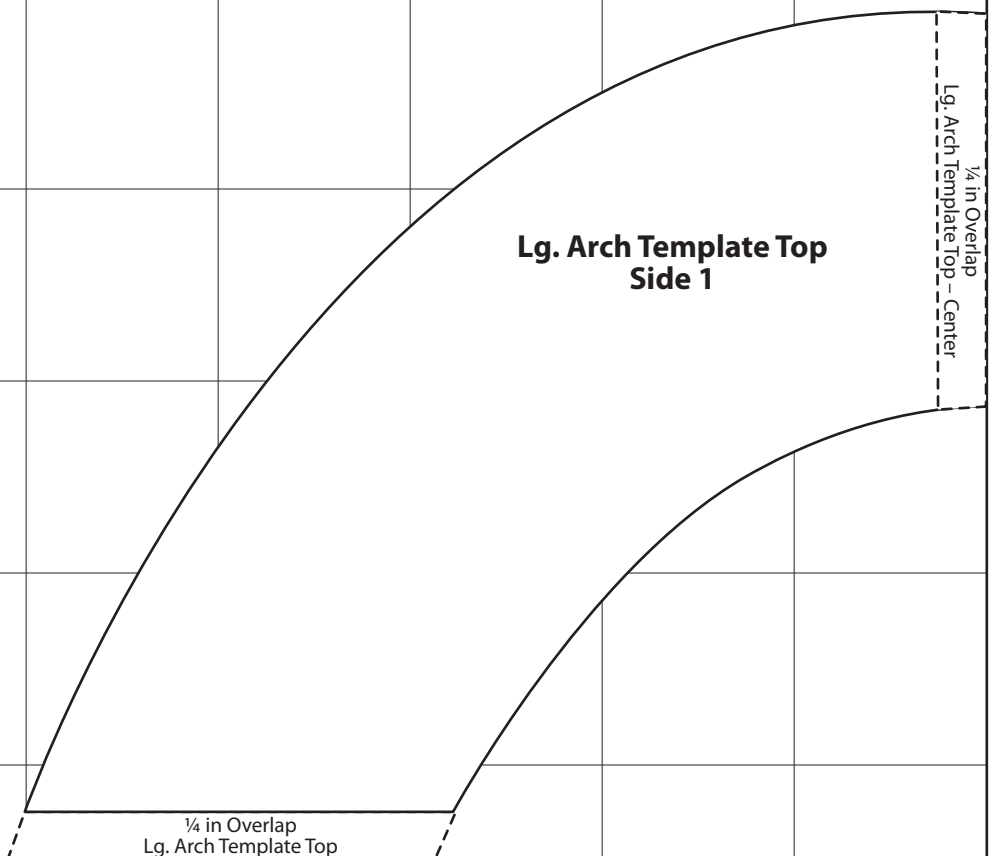
Note: *Fabric direction*

- Cut 1 – Butterflies
- Cut 1 – Floral
- Cut 1 – Color Strokes
- Cut 1 – Triangles
- Cut 1 – Fractures
- Cut 1 – Words
- Cut 1 – Wide Stripes
- Cut 1 – Diagonal Stripes
- Cut 1 – Rainbows

Lg. Arch

Note: *Fabric direction*

- Cut 1 – Butterflies
- Cut 1 – Floral
- Cut 1 – Color Strokes
- Cut 1 – Triangles
- Cut 1 – Fractures
- Cut 1 – Words
- Cut 1 – Wide Stripes
- Cut 1 – Diagonal Stripes
- Cut 1 – Rainbows



**Lg. Arch Template Top
Side 1**

$\frac{1}{4}$ in Overlap
Lg. Arch Template Top - Center

$\frac{1}{4}$ in Overlap
Lg. Arch Template Top

**Appliqué
Template (100% Scale)**
Trace on paper side of fusible web.

Scale:
1 square =
1 in x 1 in

