

A Free Project Sheet
NOT FOR RESALE

Scarlet Farm

QUILT 1



Featuring fabrics from the **Scarlet Farm** collection by **Harry W. Smith** for **STUDIO e fabrics**

Fabric Requirements

(A) 6469P-90	1 panel
(B) 1351-Onyx**	½ yard
(C) 6468-1	¼ yard
(D) 6464-90	⅓ yard
(E) 6461-99	⅞ yard
(F) 6466-90	⅓ yard
(G) 6463-90	¾ yard
(H) 6462-88	⅓ yard

(I) 6460-1W	⅓ yard
(J) 1351-Burgundy**	1 yard*
(K) 6467-1	1 ⅛ yards
(L) 6459-99	¼ yard
Backing	
6465-88	3 ¾ yards

* Includes Binding

** Just Color! Collection

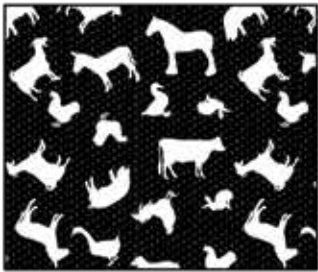
Additional Supplies Needed

Batting 64" x 76" (Recommended:
Air Lite® Colour Me 100% Cotton)
Piecing and sewing thread
Quilting and sewing supplies

Quilt designed by Heidi Pridemore
Finished Quilt Size 56" x 68"
Skill Level: Advanced Beginner

Please check our website for pattern updates before starting this project.

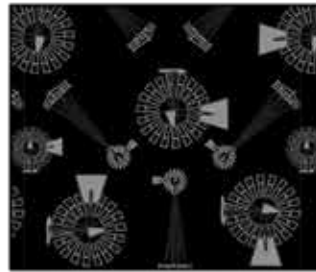
Fabrics in the Collection



Animal Tossed Allover
Black – 6459-99



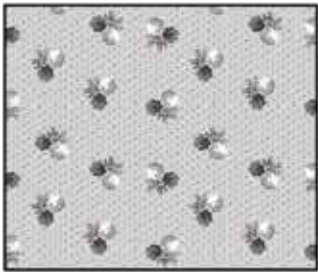
Wheat Ears
White – 6460-1W



Windmill Allover
Gray – 6461-99



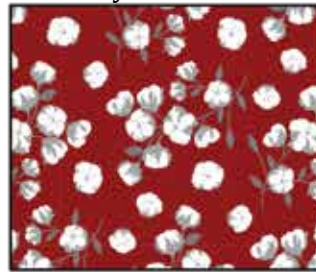
Small Tossed Windmill
Red – 6462-88



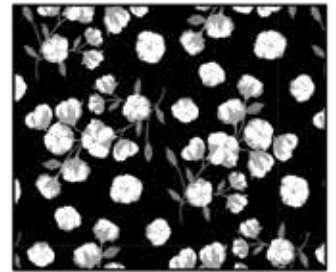
Calico
Gray – 6463-90



Animal Farm
Gray – 6464-90



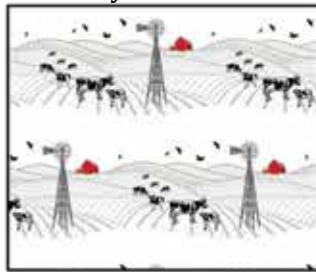
Cotton Buds
Red – 6465-88



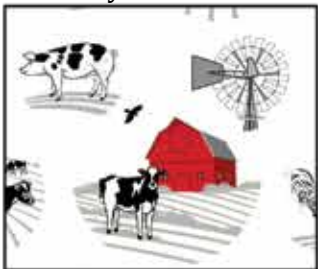
Cotton Buds
Black – 6465-99



Farm Truck Tossed Allover
Gray – 6466-90



Border Stripe
White – 6467-1



Scenic
White – 6468-1

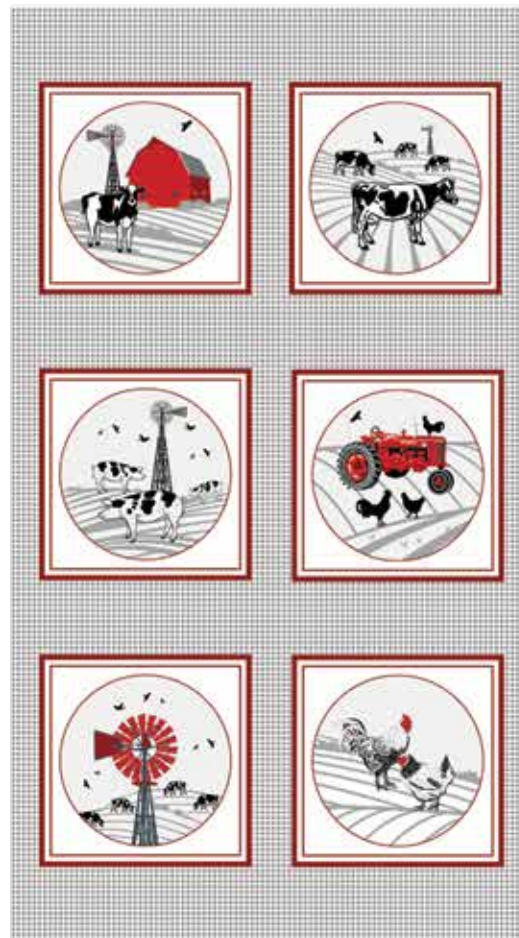
Select Fabrics from Just Color!



Burgundy
1351-Burgundy



Onyx
1351-Onyx



24 Inch Panel
Gray – 6469P-90

Cutting

Cutting Instructions

Please note: All strips are cut across the width of fabric (WOF) from selvage to selvage edge unless otherwise noted.

WOF= Width of Fabric • LOF = Length of Fabric

Fabric A (6469P-90 24 Inch Panel – Gray):

- Fussy cut (6) 10 ½" squares, each centered on a block.

Fabric B (1351-Onyx Just Color! – Onyx), cut:

- (3) 2" x WOF strips, sub-cut (12) 2" x 10 ½" strips.
- (4) 2" x WOF strips, sub-cut (12) 2" x 13 ½" strips.

Fabric C (6468-1 Scenic – White), cut:

- (1) 6 ½" x WOF strip, sub-cut (6) 6 ½" squares.

Fabric D (6464-90 Animal Farm – Gray), cut:

- (2) 3 ½" x WOF strips, sub-cut (12) 3 ½" x 6 ½" strips.

Fabric E (6461-99 Windmill Allover – Gray), cut:

- (4) 3 ½" x WOF strips, sub-cut (48) 3 ½" squares.
- (1) 2 ½" x WOF strip, sub-cut (4) 2 ½" squares.
- (3) 1 ½" x WOF strips. Sew the strips together end to end with diagonal seams and cut (2) 1 ½" x 56 ½" strips.
- (3) 1 ½" x WOF strips. Sew the strips together end to end with diagonal seams and cut (2) 1 ½" x 46 ½" strips.

Fabric F (6466-90 Farm Truck Tossed Allover – Gray), cut:

- (2) 3 ½" x WOF strips, sub-cut (12) 3 ½" x 6 ½" strips.

Fabric G (6463-90 Calico – Gray), cut:

- (2) 3 ½" x WOF strips, sub-cut (24) 3 ½" squares.
- (6) 2 ½" x WOF strips, sub-cut (46) 2 ½" x 4 ½" strips.

Fabric H (6462-88 Small Tossed Windmill – Red), cut:

- (3) 1 ½" x WOF strips. Sew the strips together end to end with diagonal seams and cut (2) 1 ½" x 48 ½" strips.
- (2) 1 ½" x 38 ½" WOF strips.

Fabric I (6460-1W Wheat Ears – White), cut:

- (3) 1 ½" x WOF strips. Sew the strips together end to end with diagonal seams and cut (2) 1 ½" x 50 ½" strips.
- (2) 1 ½" x 40 ½" WOF strips.

Fabric J (1351-Burgundy Just Color! – Burgundy), cut:

- (6) 2 ½" x WOF strips, sub-cut (92) 2 ½" squares.
- (7) 2 ½" x WOF strips for the binding.

Fabric K (6467-1 Border Stripe – White), cut:

- (3) 5 ½" x WOF strips. Sew the strips together end to end with diagonal seams and cut (2) 5 ½" x 58 ½" strips.
- (3) 5 ½" x WOF strips. Sew the strips together end to end with diagonal seams and cut (2) 5 ½" x 46 ½" strips.

Fabric L (6459-99 Animal Tossed Allover – Black), cut:

- (1) 5 ½" x WOF strip, sub-cut (4) 5 ½" squares.

Backing (6465-88 Cotton Buds – Red), cut:

- (2) 64" x WOF strips. Sew the strips together and trim to 64" x 76" to make the back.

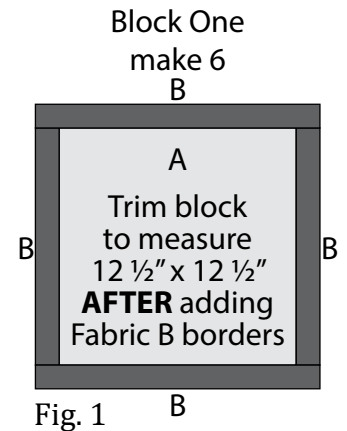
Sewing

Sew using a $\frac{1}{4}$ " seam allowance with right sides together (RST) unless otherwise indicated. Always press towards the darker fabric while assembling, unless otherwise noted by the arrows.

Block Assembly

Note: The arrows in figures represent the fabric print direction. Pay attention to the fabric and unit orientations when assembling the various components.

1. Sew (1) 2" x 10 $\frac{1}{2}$ " Fabric B strip to each side of (1) 10 $\frac{1}{2}$ " Fabric A square. Sew (1) 2" x 13 $\frac{1}{2}$ " Fabric B strip to the top and to the bottom of the Fabric A square to make (1) Block One square (Fig. 1). **Trim the block to measure 12 $\frac{1}{2}$ " x 12 $\frac{1}{2}$ ". Repeat to make (6) Block One squares total.**



2. Place (1) 3 $\frac{1}{2}$ " Fabric E square on the left side of (1) 3 $\frac{1}{2}$ " x 6 $\frac{1}{2}$ " Fabric D strip, right sides together (Fig. 2). Sew across the diagonal of the square from the upper right corner to the lower left corner (Fig. 2). Flip open the triangle formed and press. Trim away the excess fabric from behind the triangle, leaving a $\frac{1}{4}$ " seam allowance (Fig. 3).

3. Place another 3 $\frac{1}{2}$ " Fabric E square on the right side of the 3 $\frac{1}{2}$ " x 6 $\frac{1}{2}$ " Fabric D strip, right sides together (Fig. 4). Sew across the diagonal of the square from the upper left corner to the lower right corner (Fig. 4). Flip open the triangle formed and press. Trim away the excess fabric from behind the triangle, leaving a $\frac{1}{4}$ " seam allowance to make (1) Unit 1 strip (Fig. 5).

4. Repeat Steps 2-3 to make (6) Unit 1 strips total.



Fig. 2

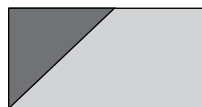


Fig. 3

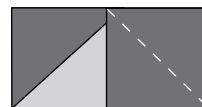


Fig. 4

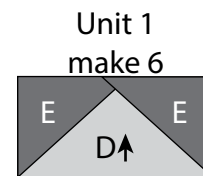


Fig. 5

5. Repeat Steps 2-3 and refer to Figures 6-7 for fabric identification, placement, seam direction and orientation to make (6) Unit 2 strips and (12) Unit 3 strips.

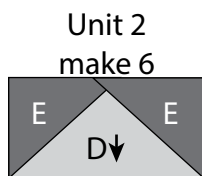


Fig. 6

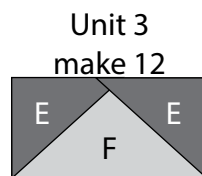


Fig. 7

6. Sew (1) 3 ½" Fabric G square to each end of (1) Unit 2 strip to make the top row. Sew (1) Unit 3 strip to each side of (1) 6 ½" Fabric C square to make the middle row. Sew (1) 3 ½" Fabric G square to each end of (1) Unit 1 square to make the bottom row. Sew together the (3) rows lengthwise to make (1) 12 ½" Block Two square (Fig. 8). Repeat to make (6) Block Two squares total.

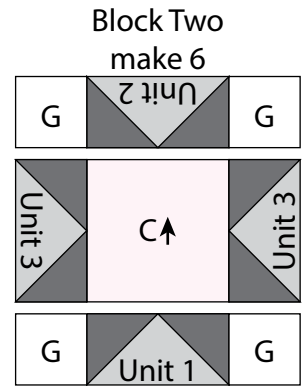


Fig. 8

7. Sew (1) Block One square to each side of (1) Block Two square to make Row One (Fig. 9). Repeat to make Row Three.

8. Sew (1) Block Two square to each side of (1) Block One square to make Row Two (Fig. 9). Repeat to make Row Four.

9. Sew together the (4) Rows from Steps 7-8, lengthwise and in numerical order from top to bottom, to make the 36 ½" x 48 ½" Center Block (Fig. 9).

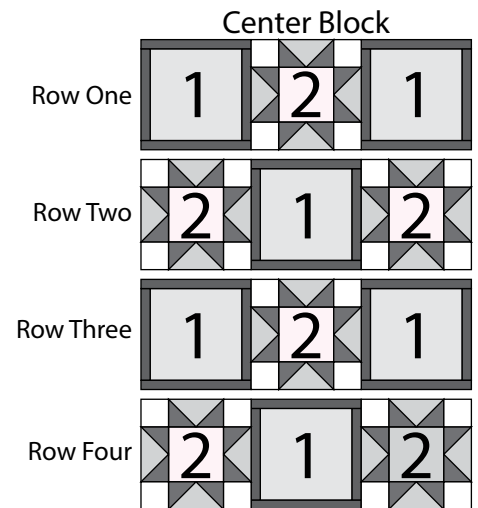


Fig. 9

10. Place (1) 2 ½" Fabric J square on the left side of (1) 2 ½" x 4 ½" Fabric G strip, right sides together (Fig. 10). Sew across the diagonal of the square from the upper right corner to the lower left corner (Fig. 10). Flip open the triangle formed and press. Trim away the excess fabric from behind the triangle, leaving a ¼" seam allowance (Fig. 11).

11. Place another 2 ½" Fabric J square on the right side of the 2 ½" x 4 ½" Fabric G strip, right sides together (Fig. 12). Sew across the diagonal of the square from the upper left corner to the lower right corner (Fig. 12). Flip open the triangle formed and press. Trim away the excess fabric from behind the triangle, leaving a ¼" seam allowance to make (1) Unit 4 strip (Fig. 13).

12. Repeat Steps 10-11 to make (46) Unit 4 strips total.



Fig. 10



Fig. 11



Fig. 12

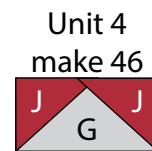


Fig. 13

13. Sew together (13) Unit 4 strips end to end to make the Left Side Border (Fig. 14).

14. Sew together (13) Unit 4 strips end to end to make the Right Side Border (Fig. 15).

Left Side
Border



Fig. 14

Right Side
Border



Fig. 15

15. Sew together (10) Unit 4 strips end to end. Sew (1) 2 ½" Fabric E square to each end of the newly sewn strip to make the Top Border (Fig. 16).

16. Sew together (10) Unit 4 strips end to end. Sew (1) 2 ½" Fabric E square to each end of the newly sewn strip to make the Bottom Border (Fig. 17).

Top Border



Fig. 16

Bottom Border



Fig. 17

Quilt Top Assembly

(Follow the Quilt Layout while assembling the quilt top.)

17. Sew (1) 1 ½" x 48 ½" Fabric H strip to each side of the Center Block. Sew (1) 1 ½" x 38 ½" Fabric H strip to the top and to the bottom of the Center Block.

18. Sew (1) 1 ½" x 50 ½" Fabric I strip to each side of the Center Block. Sew (1) 1 ½" x 40 ½" Fabric I strip to the top and to the bottom of the Center Block.

19. Sew the Left Side Border and Right Side Border to the left and right sides of the Center Block.

20. Sew the Top Border and Bottom Border to the top and to the bottom of the Center Block.

21. Sew (1) 1 ½" x 56 ½" Fabric E strip to each side of the Center Block. Sew (1) 1 ½" x 46 ½" Fabric E strip to the top and to the bottom of the Center Block.

22. Sew (1) 5 ½" x 58 ½" Fabric K strip to each side of the Center Block.

23. Sew (1) 5 ½" Fabric L square to each end of (1) 5 ½" x 46 ½" Fabric K strip. Repeat to make a second strip. Sew the strips to the top and to the bottom of the Center Block to make the quilt top.

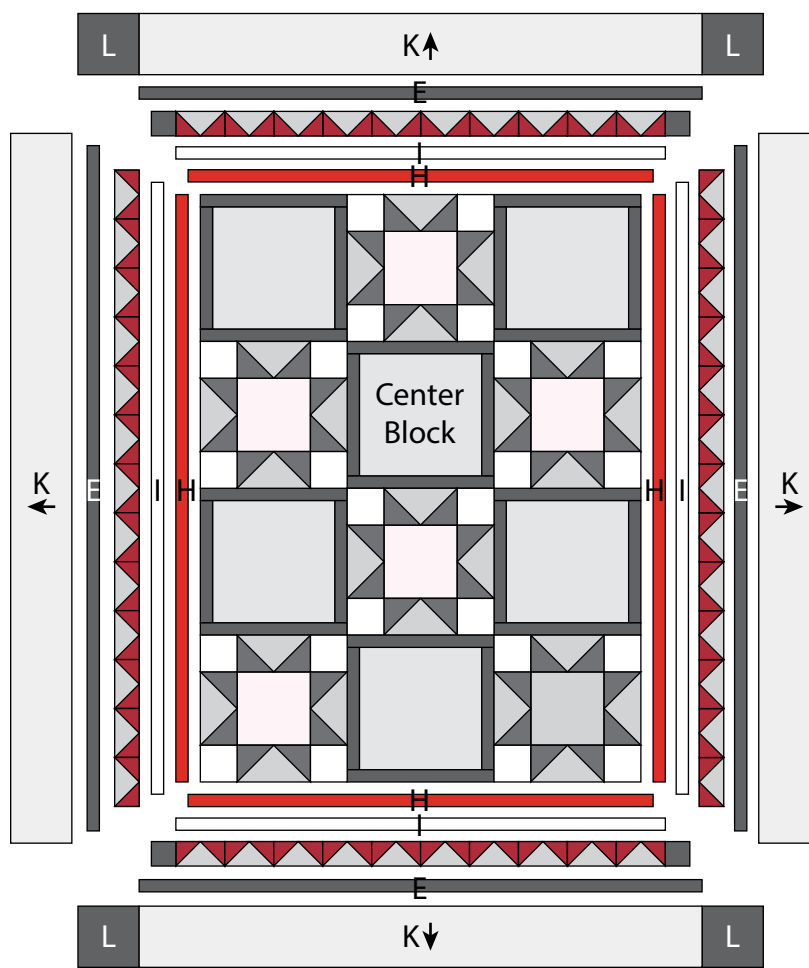
Layering, Quilting and Finishing

24. Press the quilt top and 64" x 76" backing well. Layer backing (wrong side up), batting, pressed quilt top (right side up) and baste. Quilt as desired and trim excess batting and backing when quilting is complete.

Binding

25. Cut the ends of the (7) Fabric J binding strips at a 45-degree angle and sew end to end to make (1) continuous piece of binding. Fold in half lengthwise and press wrong sides together.

26. Sew the binding to the front of the quilt, raw edges together. Turn the folded edge to the back, and hand stitch in place.



Quilt Layout

Every effort has been made to ensure that all projects are error free. All the information is presented in good faith, however no warranty can be given nor results guaranteed as we have no control over the execution of instructions. Therefore, we assume no responsibility for the use of this information or damages that may occur as a result. When errors are brought to our attention, we make every effort to correct and post a revision as soon as possible. Please make sure to check www.studioefabrics.net for pattern updates prior to starting the project. We also recommend that you test the project prior to cutting for kits. Finally, all free projects are intended to remain free to you and are **not for resale**.