

SNOW DOG

Free Project
NOT FOR RESALE

QUILT 2



Featuring fabrics from the **Snow Dog** collection by Geoff Allen for **STUDIO C fabrics**

Fabric Requirements

(A) 6347-60	1/4 yard	
(B) 6349-88	1/4 yard	
(C) 1351 Green*	1/4 yard	
(D) 6350-88	3/8 yard	
(E) 6353-99	3/8 yard	
(F) 6348-99	1/2 yard	
(G) 1351 Red Delicious*	5/8 yard++	
(H) 6355-99	3/4 yard	
(I) 6353-60	1-1/8 yards	
Backing 6351-60	3-1/4 yards	

++Includes binding.

* Just Color! Collection.

Please check our website for pattern updates before starting this project.

Additional Supplies Needed

Batting: 56" x 56"

(Recommended: Air Lite® Colour Me 100% Cotton)

Sewing and Quilting thread

Sewing and Quilting supplies

Quilt size: 48" x 48"

Skill Level: Advanced Beginner

Quilt designed by Denise Russell

Fabrics in the Collection



6356P-88 Snow Dog Panel - Red



6355-99 Snow Dog Express Blocks - Black



6347-60 Campers and Trucks - Mint



6348-99 Snowmen Black



6349-88 Tossed Snow Dogs - Red



6350-88 Plaid Red



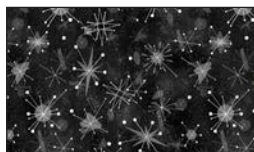
6351-60 Tossed Sled and Equipment - Mint



6352-99 Tossed Mini Essentials - Black



6353-60 Snowflake Mint



6353-99 Snowflake Black

Selected fabrics from the Just Color! collection



1351 Green



1351 Red Delicious



6354-99 Train Border Stripe - Black

Cutting

Cutting Instructions

Please note: All strips are cut across the width of the fabric (WOF) from selvage to selvage unless otherwise noted. (WOF = Width of Fabric, LOF = Length of Fabric).

Fabric A (6347-60 Campers and Trucks - Mint), cut:

*(1) 3-1/2" x WOF strip. Sub-cut eight 3-1/2" squares.

Fabric B (6349-88 Tossed Snow Dogs - Red), cut:

*(4) 1-1/2" x WOF strips for border 2.

Fabric C (Just Color! 1351 Green), cut:

*(2) 1-1/2" x WOF strips.

Fabric D (6350-88 Plaid - Red), and

Fabric E (6353-99 Snowflake - Black), cut:

*(2) 2-1/2" x WOF strips. Sub-cut thirty-two 2-1/2" squares.

*(1) 4-1/2" x WOF strip. Sub-cut eight 1" x 4-1/2" strips and eight 1" x 3-1/2" strips.

Fabric F (6348-99 Snowmen - Black), cut:

*(5) 3" x WOF strips for border 4.

Fabric G (Just Color! 1351 Red Delicious), cut:

*(4) 1-1/2" x WOF strips. Sub-cut:

- Four 1-1/2" x 8-1/2" strips.

- Two 1-1/2" x 17-1/2" strips.

- Two 1-1/2" x 35-1/2" strips.

*(5) 2-1/2" x WOF strips for binding.

Fabric H (6355-99 Snow Dog Express Blocks - Black):

*Trim eight blocks to 8-1/2".

Fabric I (6353-60 Snowflake - Mint), cut:

*(4) 1-1/2" x WOF strips. Save two strips for strip sets.

Sub-cut two strips into:

- Six 1-1/2" x 8-1/2" strips.

- One 1-1/2" x 17-1/2" strip.

*(1) 2-1/2" x WOF strip. Sub-cut sixteen 2-1/2" squares.

*(2) 4-1/2" x WOF strips. Sub-cut thirty-two 2-1/2" x 4-1/2" rectangles.

*(9) 1-1/4" x WOF strips for borders 3 and 5.

*(4) 1-1/2" x WOF strips for border 1.

Block Assembly

1. Sew a 1-1/2" Fabric C strip to a 1-1/2" Fabric I strip to make a strip set. Do not press open. Repeat to make another strip set. Cross-cut the strip sets into thirty-two 1-1/2" sections. Press the sections open. Sew the sections two-by-two to make sixteen 2-1/2" units (*figure 1*). Press the seams open.

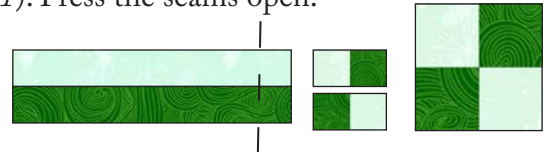


Figure 1 – Make (16) 2-1/2" units.

2. Draw a diagonal line on the wrong side of the 2-1/2" Fabric D squares. With right sides together, layer a marked Fabric D square on the left short end of a 2-1/2" x 4-1/2" Fabric I rectangle and stitch on the drawn line. Trim 1/4" away from the seam line and press open. Similarly, stitch another Fabric D square to the opposite end of the same rectangle (*figure 2*). Repeat to make a total of sixteen 2-1/2" x 4-1/2" flying-geese units.



Figure 2 – Make (16) 2-1/2" x 4-1/2" units.

3. Repeat Step 2 with the 2-1/2" Fabric E squares and the remaining 2-1/2" x 4-1/2" Fabric I rectangles to make sixteen 2-1/2" x 4-1/2" flying-geese units (*figure 3*).



Figure 3 - Make (16) 2-1/2" x 4-1/2" units.

4. Sew a 1" x 3-1/2" Fabric D strip to opposite sides of a 3-1/2" Fabric A square. Press the seams away from the center. Repeat to make four units. Sew a 1" x 4-1/2" Fabric D strip to the top and one to the bottom of each unit. Press as before.

Sewing

Repeat this step with the 1" x 3-1/2" Fabric E strips and the remaining 3-1/2" Fabric A squares to make four more units (*figure 4*).



Figure 4 – Make 4 of each.

5. Sew one Step 2 unit to opposite sides of the contrasting Step 4 units. Press open. Repeat with the Step 3 units and the contrasting Step 4 units (*figure 5*).



Figure 5

6. Using the 2-1/2" Fabric I squares, the Step 1 units, the remaining flying geese from Steps 2 and 3, and the Step 5 units, assemble eight 8-1/2" blocks as shown below: two blocks of each type. Note the orientation of the Step 1 units (*figure 6*) when assembling them. Press the seams in one direction.

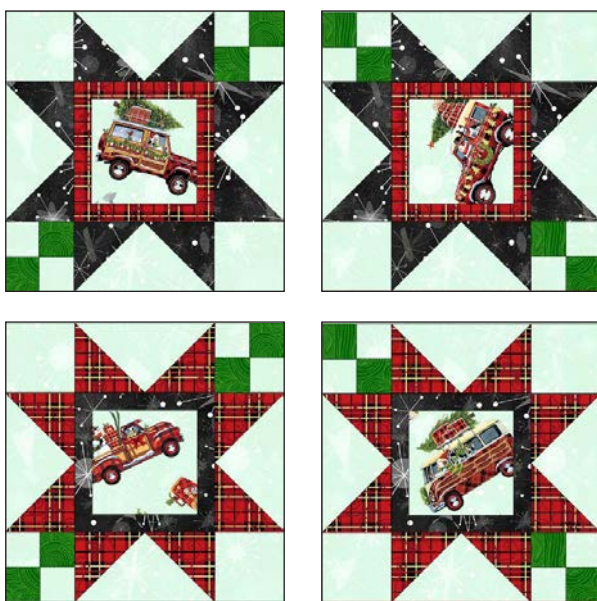


Figure 6 – Make 2 of each.

Quilt Top Assembly

(Follow the quilt diagram and photograph while assembling the quilt top.)

7. Referring to the quilt photo for center block placement, lay out two rows with two 8-1/2" Fabric H blocks and a 1-1/2" x 8-1/2" Fabric I sashing strip. Sew the blocks and sashing strips together and press the seams toward the sashing. Sew a 1-1/2" x 17-1/2" Fabric I strip between the two block rows to make the center of the quilt. Press the seams in one direction.

8. Sew a 1-1/2" x 17-1/2" Fabric G strip to the right and one to the left of the quilt center. Press the seams away from the center. Noting fabric placement and orientation, sew together two Step 6 blocks and a 1/2" x 8-1/2" Fabric I sashing strip, and sew this strip to the right side of the quilt. Repeat to make and add the left strip. Press the seams away from the center.

9. Sew a 1-1/2" x 35-1/2" Fabric I strip to the top and one to the bottom of the quilt center. Press the seams away from the center.

10. Lay out two 8-1/2" Fabric H blocks, two Step 6 blocks, two 1-1/2" x 8-1/2" Fabric G strips, and one 1-1/2" x 8-1/2" Fabric I strip. Sew the blocks and sashing strips together and press the seams in one direction. Sew this strip to the top of the quilt center. Make another strip and sew it to the bottom of the quilt center. Press the seams in one direction.

11. For border 1, sew the four 1-1/2" Fabric I strips together end to end using diagonal seams. Measure the vertical length of the quilt top through the center and cut two border strips that length. Sew one strip to each side of the quilt top. Measure the width of the quilt top through the center. Cut two border strips that length and sew one to the top and one to the bottom. Press the seams toward the borders.

12. Repeat Step 11 with the four 1-1/2" Fabric B strips to make and add border 2.

Sewing

13. Repeat Step 11 with the nine 1-1/4 Fabric I strips to make and add border 3. Save leftover long strip for border 5.

14. Repeat Step 11 with the five 3" Fabric F strips to make and add border 4.

15. Repeat Step 11 with the leftover 1-1/4" Fabric I strip to add border 5.

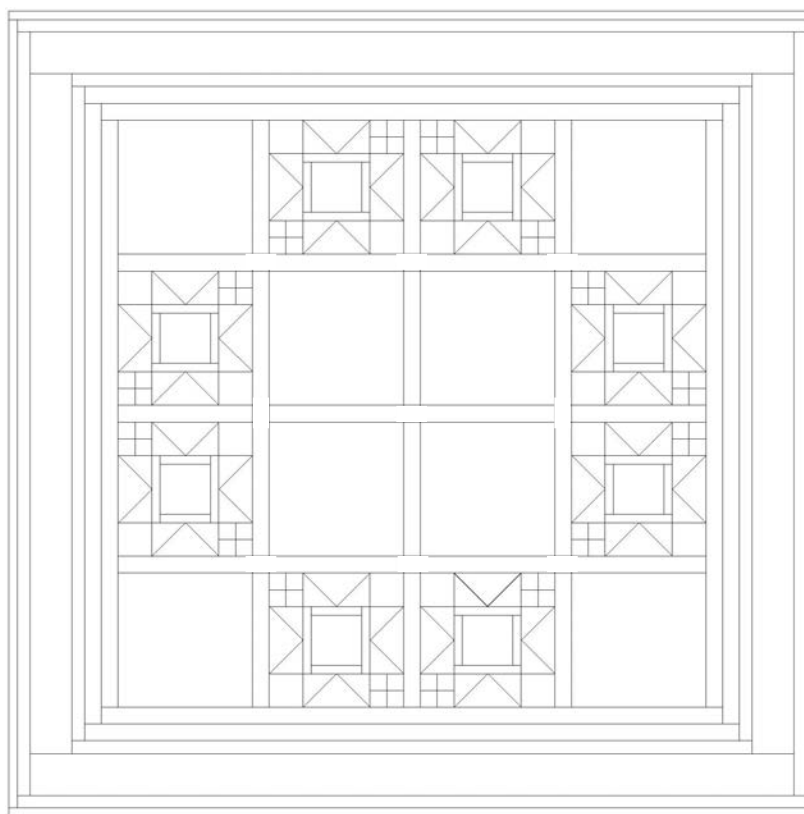
Layering, Quilting, and Finishing

16. Create a quilt sandwich with the batting between the quilt top and the backing. Pin or baste layers

together, mark quilting design, and quilt by hand or machine. When quilting is complete, remove pins or basting and trim batting and backing even with raw edges of the quilt top.

Binding

17. Join the five 2-1/2" Fabric G binding strips together end to end using a diagonal seam to make one long strip. Fold in half lengthwise and press. Sew binding to the edges of the quilt top, mitering corners, and overlapping ends. Fold binding to the back of the quilt and stitch it in place by hand to finish.



Quilt Diagram

©2021 Studio e Fabrics®

Every effort has been made to ensure that all projects are error free. All the information is presented in good faith; however, no warranty can be given nor results guaranteed as we have no control over the execution of instructions. Therefore, we assume no responsibility for the use of this information or damages that may occur as a result. When errors are brought to our attention, we make every effort to correct and post a revision as soon as possible. Please make sure to check www.studioefabrics.net for pattern updates prior to starting the project. We also recommend that you test the project prior to cutting for kits. Finally, all free projects are intended to remain free to you and are not for resale.