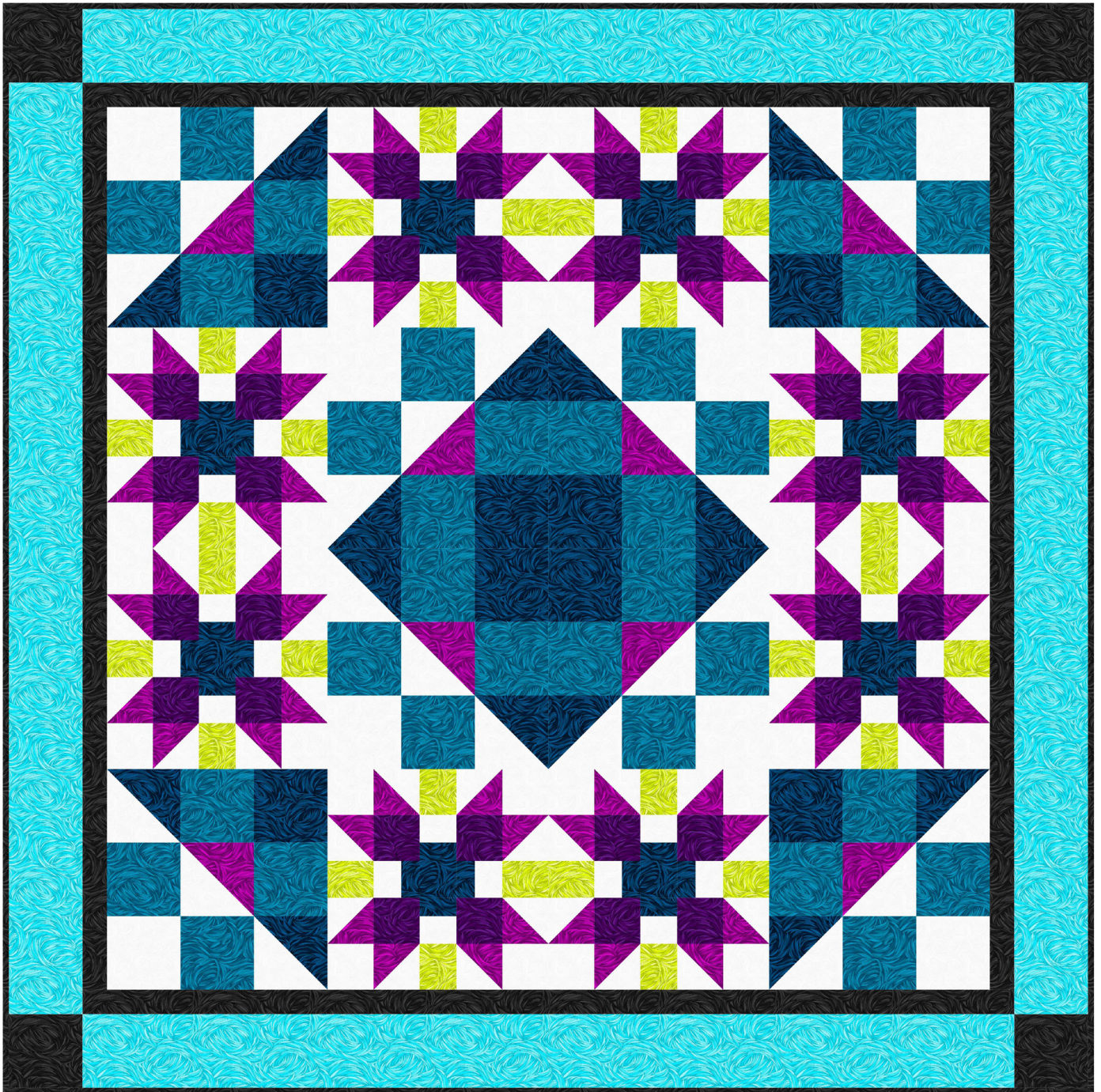


Tempest

by Chelsea DesignWorks

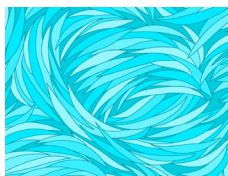


Quilt size: 88" x 88" (2.24m x 2.24m)

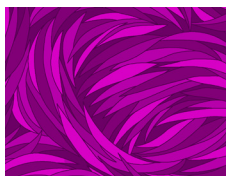
Skill Level: Advanced Beginner

Rotating Stars Quilt Ordering Guide

SKU	Yards	Meters	12 Kits	24 Kits
7590-11	1 3/4 yds	1.60m	2 bolts	3 bolts
7590-25	1 yd	0.91m	1 bolt	2 bolts
7590-46	1/2 yds	0.46m	1 bolt	1 bolt
7590-55	3/4 yds	0.69m	1 bolt	2 bolts
7590-71	1 1/4 yds	1.14m	2 bolts	3 bolts
7590-77	1 yd	0.91m	1 bolt	2 bolts
7590-99*	1 1/2 yds	1.37m	2 bolts	3 bolts
1351-Pigment White	2 1/4 yds	2.06m	2 bolts	4 bolts
Backing Fabric Option				
7590-25	8 yds	7.32m	7 bolts	14 bolts
<p>* Indicates binding fabric. FQ = 18" x 22" (0.45m x 0.55m) All fabric quantities are based on 15yd bolts unless otherwise indicated.</p>				



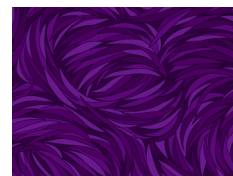
7590-11
Turquoise



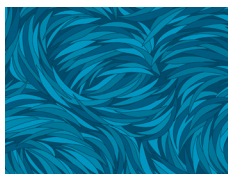
7590-25
Fuchsia



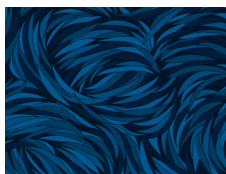
7590-46
Citrus Lime



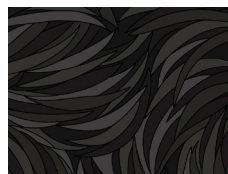
7590-55
Purple Passion



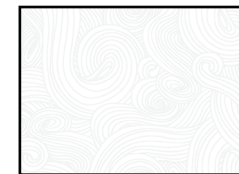
7590-71
Surf



7590-77
Deep Ocean



7590-99
Dark Shadows



1351-Pigment White
Just Color!