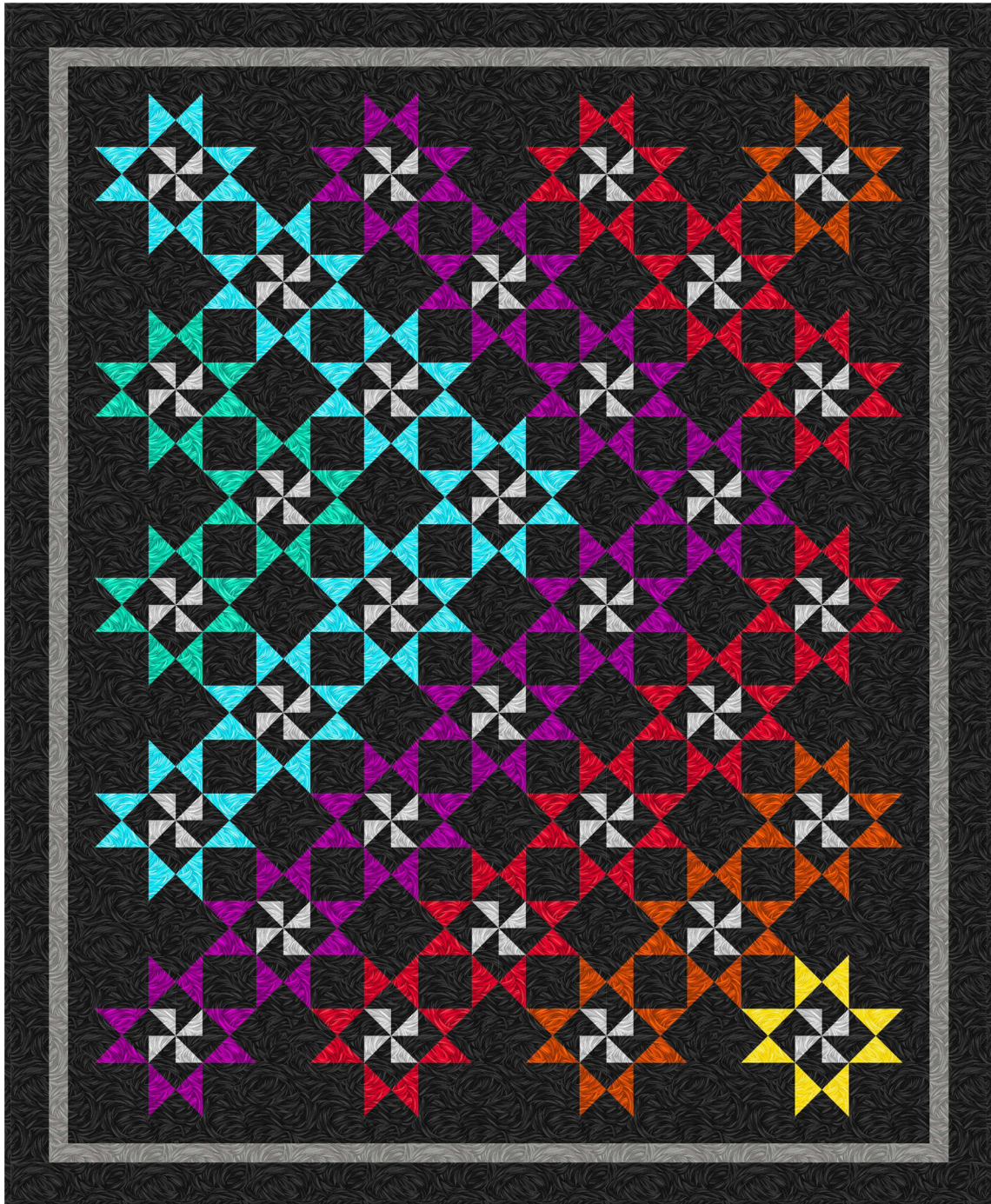


Tempest

by Chelsea DesignWorks



Quilt size: 77" x 94" (1.96m x 2.39m)

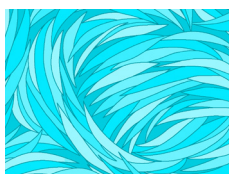
Skill Level: Advanced Beginner

Starburst Galaxy 2 Quilt Ordering Guide

SKU	Yards	Meters	12 Kits	24 Kits
7590-09	5/8 yds	0.57m	1 bolt	2 bolts
7590-11	1/2 yds	0.46m	1 bolt	1 bolt
7590-25	5/8 yds	0.57m	1 bolt	2 bolts
7590-38	3/8 yds	0.34m	1 bolt	1 bolt
7590-44	1/4 yds	0.23m	1 bolt	1 bolt
7590-67	3/8 yds	0.34m	1 bolt	1 bolt
7590-88	5/8 yds	0.57m	1 bolt	2 bolts
7590-93	5/8 yds	0.57m	1 bolt	2 bolts
7590-99*	6 5/8 yds	6.06m	6 bolts	11 bolts
Backing Fabric Option				
7590-11	5 1/2 yds	5.03m	5 bolts	10 bolts
* Indicates binding fabric. FQ = 18" x 22" (0.45m x 0.55m) All fabric quantities are based on 15yd bolts unless otherwise indicated.				



7590-09
Silver



7590-11
Turquoise



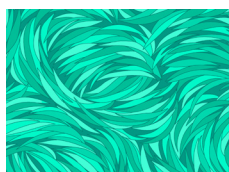
7590-25
Fuchsia



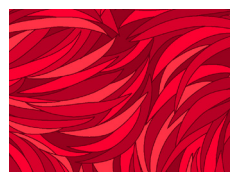
7590-38
Flame



7590-44
Corn



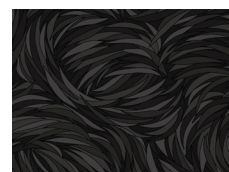
7590-67
Jade



7590-88
Ruby



7590-93
Pewter



7590-99
Dark Shadows