

Free Project
NOT FOR RESALE

QUILT 1

Wild Wild West



Featuring fabrics from the Wild Wild West collection by Art Loft for **STUDIO C fabrics**

Fabric Requirements

(A) 5357P-38	1 panel	(J) 5354-89	7/8 yard
(B) 5350-11	1/8 yard	(K)Peppered Cotton-46	1-1/8 yards
(C) Peppered Cotton-39	1/4 yard	(L) 5351-88	1-3/8 yards
(D) 5348-99	1/4 yard	(M) 5356-99	3-1/3 yards
(E) 5349-77	3/8 yard	Backing 5353-44	7-3/4 yards
(F) 5355-33	3/8 yard		
(G) 5352-38	5/8 yard	*Includes Binding	
(H) 5350-99	2/3 yard		
(I) Peppered Cotton-23*	7/8 yard		

Additional Supplies Needed

- Air Lite batting: 93" x 93"
- Sewing and Quilting thread
- Sewing and Quilting supplies
- Quilt size: 84-1/2" x 84-1/2"
- Skill Level: Intermediate

Quilt designed by Denise Russell

Fabrics in the Collection



5356-99 Scenic Double Border - Black



5357P-38 Large Scenic Panel - Sienna



5347-38 Wild Horse Collage - Multi Sienna



5348-99 Rodeo Buckles
Black



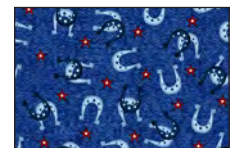
5349-77 Paisley Toss
Blue



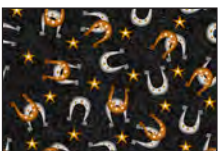
5349-88 Paisley Toss
Red



5349-99 Paisley Toss
Black



5350-11 Horseshoes
Blue



5350-99 Horseshoes
Black



5352-38 Leather
Work - Sienna

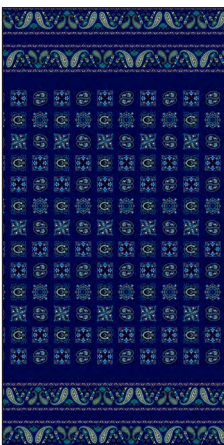


5354-89 Serape
Blanket - Multi Red



5355-33 Cowboy
Accessories - Tan

Selected fabrics from the
Peppered Cottons collection



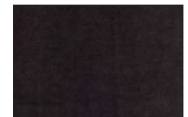
5351-77 Bandana
Double Border - Blue



5351-88 Bandana
Double Border - Red



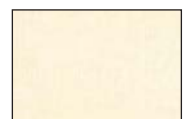
5353-44 Wild Horses - Desert



Carbon - 23



Sand - 39



Vanilla - 46

Cutting

Cutting Instructions

Please note: All strips are cut across the width of the fabric (WOF) from selvage to selvage unless otherwise noted. (WOF = Width of Fabric, LOF = Length of Fabric).

Fabric A (5357P-38 Large Scenic Panel), trim:

*(1) 22-1/2" x 22-1/2" square.

Fabric B (5350-11 Horseshoes – Blue), cut:

*(1) 2-1/4" x WOF strip. Sub-cut sixteen 2-1/4" squares.

Fabric C (Peppered Cotton-39 Sand), cut:

*(1) 3-3/4" x WOF strip. Sub-cut eight 3-3/4" squares; cut twice diagonally. (W)

Fabric D (5348-99 Rodeo Buckles – Black), cut:

*(1) 4" x WOF strip. Sub-cut four 4" squares.

Fabric E (5349-77 Paisley Toss – Blue), cut:

*(1) 3-3/8" x WOF strip. Sub-cut eight 3-3/8" squares; cut once diagonally. (X)

*(1) 3-3/4" x WOF strip. Sub-cut eight 3-3/4" squares; cut twice diagonally. (Y)

Fabric F (5355-33 Cowboy Accessories – Tan), cut:

*(3) 3-1/2" x WOF strips for border 2.

Fabric G (5352-38 Leather Work – Sienna), cut:

*(1) 4" x WOF strip. Sub-cut four 4" squares.

*(8) 1-1/2" x WOF strips for border 10.

Fabric H (5350-99 Horseshoes – Black), cut:

*(2) 2-5/8" x WOF strips. Sub-cut sixteen 2-5/8" squares.

*(11) 1-1/2" x WOF strips: five for border 5, six for border 7.

Fabric I (Peppered Cotton-23 Carbon), cut:

*(3) 1" x WOF strips for border 1.

*(9) 2-1/2" x WOF strips for binding.

Fabric J (5354-89 Serape Blanket - Multi Red), fussy-cut:

*(8) 3-1/2" x LOF strips for border 6.

Fabric K (Peppered Cotton-46 Vanilla), cut:

*(1) 2-1/4" x WOF strip. Sub-cut sixteen 2-1/4" squares.

*(2) 3" x WOF strips. Sub-cut sixteen 3" squares.

*(1) 4-3/4" x WOF strip. Sub-cut four 4-3/4" squares.

*(1) 6-1/4" x WOF strip. Sub-cut four 6-1/4" squares; cut twice diagonally. (Z)

*(11) 1-1/2" x WOF strips: five for border 4, 6 for border 8.

Sewing

Fabric L (5351-88 Bandana Double Border – Red), fussy-cut:

*(5) 7-1/2" x WOF strips for border 3 (do not include its paisley section).

Fabric M (5356-99 Scenic Double Border), fussy-cut:

*(4) 10-1/2" x LOF strips for border 9.

*(4) 3-1/4" x LOF strips for border 11.

Block Assembly

1. Mark a diagonal line on the wrong side of the 2-5/8" Fabric H squares. With right sides together, place two marked Fabric H squares on opposite corners of one 4-3/4" Fabric K square, making sure drawn lines are intersecting in the middle - corners of small squares will overlap. Stitch 1/4" on each side of the marked line (a), cut on the drawn line (b), and press each unit open (c). Place one more marked Fabric H square on the corner of each unit, stitch as before (d), and cut. Press the seams open (e) to make four 2-1/4" x 4" flying geese. Repeat with the remaining 2-5/8" Fabric H and three more 4-3/4" Fabric K squares to make a total of sixteen flying geese (*figure 1*).

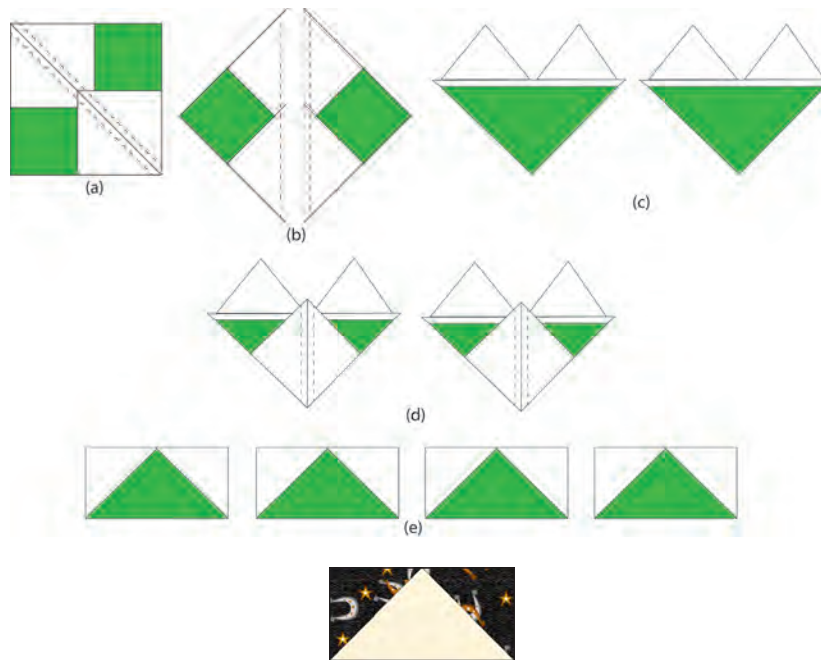


Figure 1 – Make 16.

2. Sew two step 1 flying geese to opposite sides of a 4" Fabric G square (*figure 2*). Press the seams to the center. Make four strips.

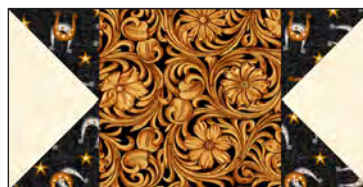


Figure 2 – Make 4.

Sewing Cont.

3. Sew a 2-1/4" Fabric K square to both sides of the remaining step 1 flying geese to make eight strips. Press the seams away from the center. Sew one strip to the top and one to the bottom of the step 2 strips to make four 7-1/2" stars (*figure 3*). Press the seams in one direction.

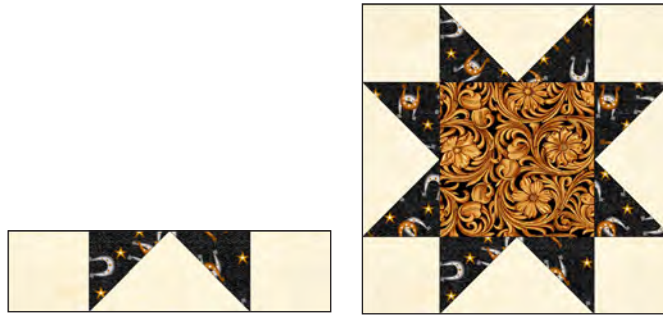


Figure 3 – Make 4.

4. With right sides together, layer a Fabric C triangle W on the left short end of a Fabric E triangle X, stitch them together and press open. In the same manner, stitch another Fabric C triangle W to the opposite end of the triangle X (*figure 4*). Repeat to make a total of sixteen flying-geese units.



Figure 4 – Make 16.

5. Fold a 3" Fabric K square in half with right sides together. Mark the center on adjacent sides of the square. Fold two Fabric E triangles Y with wrong sides together and crease to mark the center. Nesting the centers, sew the triangles Y to adjacent sides of the Fabric K square (*figure 5*). Press the seams open. Repeat to make sixteen units.



Figure 5 – Make 16.

6. Sew the step 4 and step 5 units together and press the seams toward square (*figure 6*).

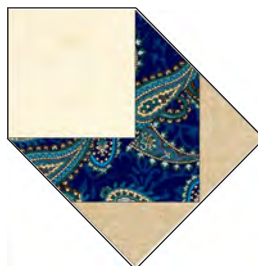


Figure 6

Sewing Cont.

7. Draw a diagonal line on the wrong side of the 2-1/4" Fabric B squares. With the right sides together, place one marked Fabric B square on a corner of one 4" Fabric D square and stitch on the drawn line. Repeat with the opposite corner of the same square. Trim the seam allowances to 1/4" and press open. Repeat with the other corners of the square (*figure 7*). Make four 4" patches.



Figure 7 – Make 4.

8. Sew two step 6 units to opposite sides of the step 7 units (*figure 8*). Press the seams away from the center. Repeat to make four strips.



Figure 8

9. Sew two Fabric K triangles Z to opposite sides of the remaining step 6 units (*figure 9*). Press the seams toward triangles. Make a total of eight units.



Figure 9 – Make 8.

10. Sew the step 9 units to the step 8 strips to make four 10-1/2" blocks (*figure 10*). Press the seams open and trim the blocks to size if necessary.



Figure 10 – Make 4.

Sewing Cont.

Quilt Top Assembly

(Follow the quilt diagram and photograph while assembling the quilt top.)

11. For border 1, join the three 1" Fabric I strips border strips together end to end using diagonal seams. Cut two strips 22-1/2" long and sew them to each side of the panel. Press the seams toward the border strips. Measure the width of the quilt top through the center. Cut two border strips that length and sew one to the top and one to the bottom. Press the seams toward the borders.

12. For border 2, sew the three 3-1/2" Fabric F strips together end to end using diagonal seams. Measure the vertical length of the quilt top through the center and cut two border strips that length. Sew one strip to each side of the quilt top. Measure the width of the quilt top through the center. Cut two border strips that length and sew one to the top and one to the bottom. Press the seams toward the borders.

13. To make border 3, sew the five 7-1/2" Fabric L strips together end to end using diagonal seams. Measure the width of the quilt top through the center. Cut two border strips that length, sew a step 3 block to each end of the strips to make the top and the bottom border strips, press seams away from squares and set them aside. Measure the vertical length of the quilt top through the center and cut two border strips that length. Sew one strip to each side of the quilt top. Press seams toward borders. Finally, sew the top and the bottom strips to the quilt center. Press the seams toward the borders.

14. Repeat step 12 with the five 1-1/2" Fabric K strips to make and add border 4.

15. Repeat step 12 with the five 1-1/2" Fabric H strips to make and add border 5.

16. Repeat step 12 with the eight 3-1/2" Fabric J strips to make and add border 6.

17. Repeat step 12 with the six 1-1/2" Fabric H strips to make and add border 7.

18. Repeat step 12 with the six 1-1/2" Fabric K strips to make and add border 8.

19. To make border 9, measure the width of the quilt top through the center. Cut two 10-1/2" Fabric M border strips that length, sew a step 10 block to each end of the strips to make the top and the bottom border strips, press seams away from squares and set them aside. Measure the vertical length of the quilt top through the center and cut two Fabric M border strips that length. Sew one strip to each side of the quilt top. Press the seams toward borders. Finally, sew the top and the bottom strips to the quilt center. Press the seams toward the borders.

20. Repeat step 12 with the eight 1-1/2" Fabric G strips to make and add border 10.

21. For border 11, mark the quilt center along the sides, top, and bottom. Mark the center of each 3-1/4" Fabric M border strip. Matching the centers, sew each border strip in place beginning and ending exactly 1/4" from the corners. DO NOT trim the extra length.

22. To miter the borders, fold one corner of the quilt on a 45° angle so that the border strips are directly on top

Sewing Cont.

of one another and the seams nest together. Place your rotary ruler on the fold of the quilt so that the long edge is against the fold and the 45° line is on the side of the seam. Draw a line from the corner of the quilt top to the outside edge of the border. Pin the borders together. Position your needle on the inside corner where the border meets the quilt. Stitch directly on the line you have drawn to the outside edge of the border. Trim the excess fabric leaving a ¼” seam allowance. Press. Repeat the process for the remaining three corners of the quilt.

Layering, Quilting, and Finishing

23. Create a quilt sandwich with the batting between the quilt top and the backing. Pin or baste layers together, mark quilting design, and quilt by hand or machine. When quilting is complete, remove pins or basting and trim batting and backing even with raw edges of the quilt top.

Binding

24. Join the nine 2-1/2” Fabric I binding strips together end to end using a diagonal seam to make one long strip. Fold in half lengthwise and press. Sew binding to the edges of the quilt top, mitering corners, and overlapping ends. Fold binding to the back of the quilt and stitch it in place by hand to finish.



©2020 Studio e Fabrics®

Every effort has been made to ensure that all projects are error free. All the information is presented in good faith; however, no warranty can be given nor results guaranteed as we have no control over the execution of instructions. Therefore, we assume no responsibility for the use of this information or damages that may occur as a result. When errors are brought to our attention, we make every effort to correct and post a revision as soon as possible. Please make sure to check www.studioefabrics.com for pattern updates prior to starting the project. We also recommend that you test the project prior to cutting for kits. Finally, all free projects are intended to remain free to you and are not for resale.

Diagram

